



# HERITAGE TRAIN

## All aboard the York-Durham Heritage Railway

Looking for a nostalgic trip through some of Ontario's most scenic countryside?

Then climb aboard the York-Durham Heritage Railway and be prepared for a fascinating journey into the past. The popular tourist train opened its fifth season on June 3 and runs through until October 15.

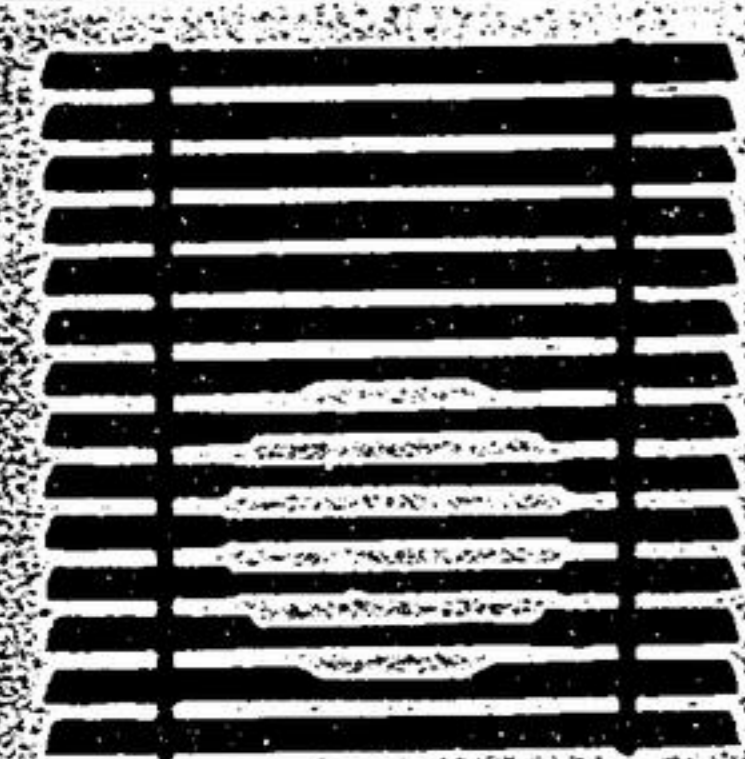
The 20km (12.2 mile) journey takes visitors on a charming tour between the historic towns of Uxbridge and Whitechurch-Stouffville. The three historical diesel locomotives date back to the 1930s and travel at 15km per hour. The traveling time between towns is one hour, with a one hour layover in each town.

Along the way, a friendly tour guide points out places of interest and provides a brief history of the area. A gift shop and refreshments are available on board. All of the crew aboard the York-Durham Heritage Railway are volunteers and the engineers are qualified to run that line.

"This is a very picturesque part of the country," says Dr. Bill Corrigan, a volunteer with the York-Durham Heritage Railway. "You'll see some of the highest elevations in Ontario and some truly breathtaking scenery."

Once you arrive in either town, there is plenty to see and do. Uxbridge features a Railway Museum, Oak Ridges moraine and historical walking tours.

Continued on page 21



**SHINE  
-A-  
BLIND**  
CANADA  
HunterDouglas

Dealer for:  
**PETER CORMACK (905) 642-5555**

**THIS FATHER'S DAY**  
Choose  
An Alternate Form of  
Relaxation

(Massage Therapy, Shiatsu, Reflexology)



**GIFT CERTIFICATES**  
\$5<sup>00</sup> OFF  
Reg. Prices

**STOUFFVILLE THERAPEUTIC CENTRE**  
FOR MASSAGE, SHIATSU &  
REFLEXOLOGY  
37 Sandiford Dr., Suite 303  
642-4237

**Whittamore's FARM**  
OPEN DAILY  
9AM - 7PM

**CAN YOU TASTE THOSE STRAWBERRIES?**  
ONLY 10 MORE DAYS!!!  
PHONE 905-294-3275 FOR CROP REPORT

**ASPARAGUS**  
Picked fresh daily from our farm. **\$2<sup>00</sup> lb.**

We have a great selection of **HANGING BASKETS, BEDDING PLANTS, HERBS, GERANIUMS and FRESH CUT FLOWERS.**  
**RHUBARB** is picked fresh daily from our farm.  
The **Fruit Pies** from our **BAKESHOP** are awesome.

Visit Markham's **ESTATE WINERY** and take home one of 35 varieties of award winning **FRUIT, GRAPE and ICE WINES.**  
Try our **'WINE OF THE WEEK' CRIMSON CURRANT**

Visit us at the **MARKHAM FARMER'S MARKET**  
(Main St. at Robinson) **SATURDAYS 8:00 A.M. TO 2:00 P.M.**  
**8100 STEELES AVE. E. (MARKHAM)**  
[www.whittamoresfarm.com](http://www.whittamoresfarm.com)

**I need  
you ...**

to look  
after me  
in your  
home.



**WE WATCH** is looking for loving, responsible Providers to care for children in their home.

We offer:

- o ongoing support & training
- o equipment & resource materials
- o liability insurance
- o regular paycheques
- o payment for statutory holidays
- o payment for child's sick days
- o all advertising

**Wee Watch**  
A Licensed Agency  
**479-9671**



**Patti-Lynn**  
INTERIORS

5402 Main St., Suite 237,  
Stouffville, Ont. L4A 1H3  
Tel. (905) 640-0640 • 1-800-267-0063



**SCRATCH & SAVE**  
**10% - 50%**  
OFF  
**CABOT OUTDOOR STAINS.**

Extended Sale  
EXPIRES  
JUNE 30, 2000

Translucent, Semi-Transparent, Opaque  
Three distinct looks for your deck care project

