

Heating **LENNOX** Cooling  
**PALMER BROS.**  
 Quality Heating & Air Conditioning Installation.  
 (905)  
**470-7563**

Unionville Home Society  
**THE ANNUAL MEETING OF THE UNIONVILLE HOME SOCIETY**  
 will be held on Thursday, June 22, 2000  
 at Union Villa  
 Sharon M. Lawlor Auditorium  
 4300 Highway #7, Unionville  
 commencing at 7:30 p.m.

## Be a Big Brother



it's kids stuff.

905-727-1251

This message brought to you as a community service of The Economist/Tribune

# Work on pool begins in 10 days

BY JOAN RANSBERRY  
 Staff Writer

The first shovel will go into the ground to build a \$7.1-million indoor swimming pool, library and fitness centre in 10 days.

With the exception of one councillor, Whitchurch-Stouffville council awarded the \$6-million building contract to Atlas Corp. of Concord, while the remaining \$1 million-plus will cover the cost of the fitness centre and other extras.

A plan to add a 5,000-square-foot fitness centre to the six-lane indoor pool and library complex at Memorial Park South was made recently.

The ground-breaking ceremony will be held June 20.

The project will prove to be a "well worthwhile project for the municipality," said Mayor Wayne Emerson.

"This will be a state-of-the-art building."

Ward 1 Councillor Steve Pliakas is taking issue with the town spending \$7 million on the facility.

When the project was first presented, town staff suggested it would cost less than \$5 million.

"If we were charged with being lousy managers, we'd be guilty," Pliakas said. Construction is to begin later this month.



STEVE PLIAKES

## Summer Lawn Watering Restrictions

Water FOR Tomorrow  
 www.yorkwater.on.ca

Hot summers strain water supplies. Municipal lawn watering restrictions are now in effect. Watch for details in your local newspaper.

Now in Effect!

Use sprinklers that spray close to the ground.

### Wise Tips



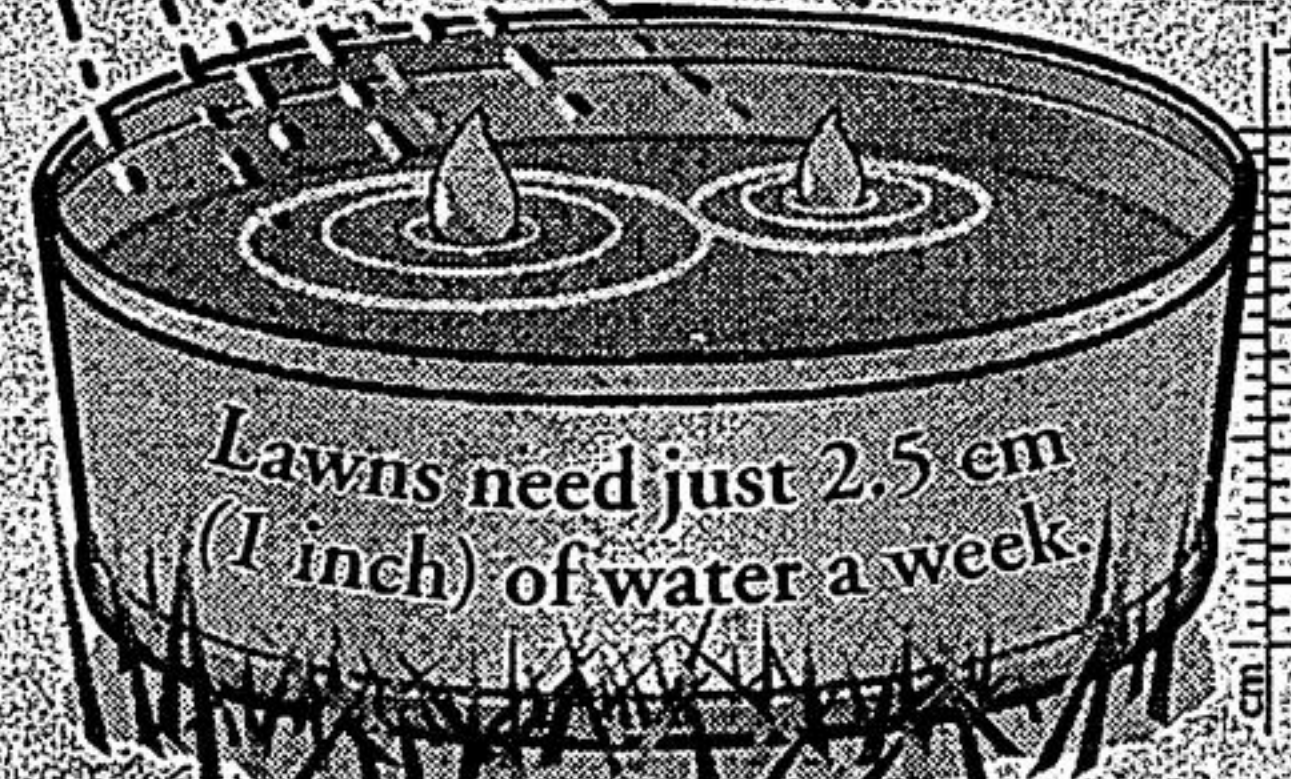
Water early in the morning.



Use soaker hoses for garden beds.



Cut grass high and leave clippings on the lawn.



Use an empty tuna can to gauge how much water has fallen, and how much more watering is needed. When the can is full, turn off the water.

Lawns need just 2.5 cm (1 inch) of water a week.

Ontario's Rising Star  
**York Region**

Markham • Vaughan • Richmond Hill • Newmarket • Aurora  
 Georgina • Whitchurch-Stouffville • East Gwillimbury • King

## COSMETIC WAREHOUSE SALE

DISCONTINUED LINES OF TREATMENT, MAKEUP, FRAGRANCE, AND HAIR CARE PRODUCTS.

### DATES & TIMES:

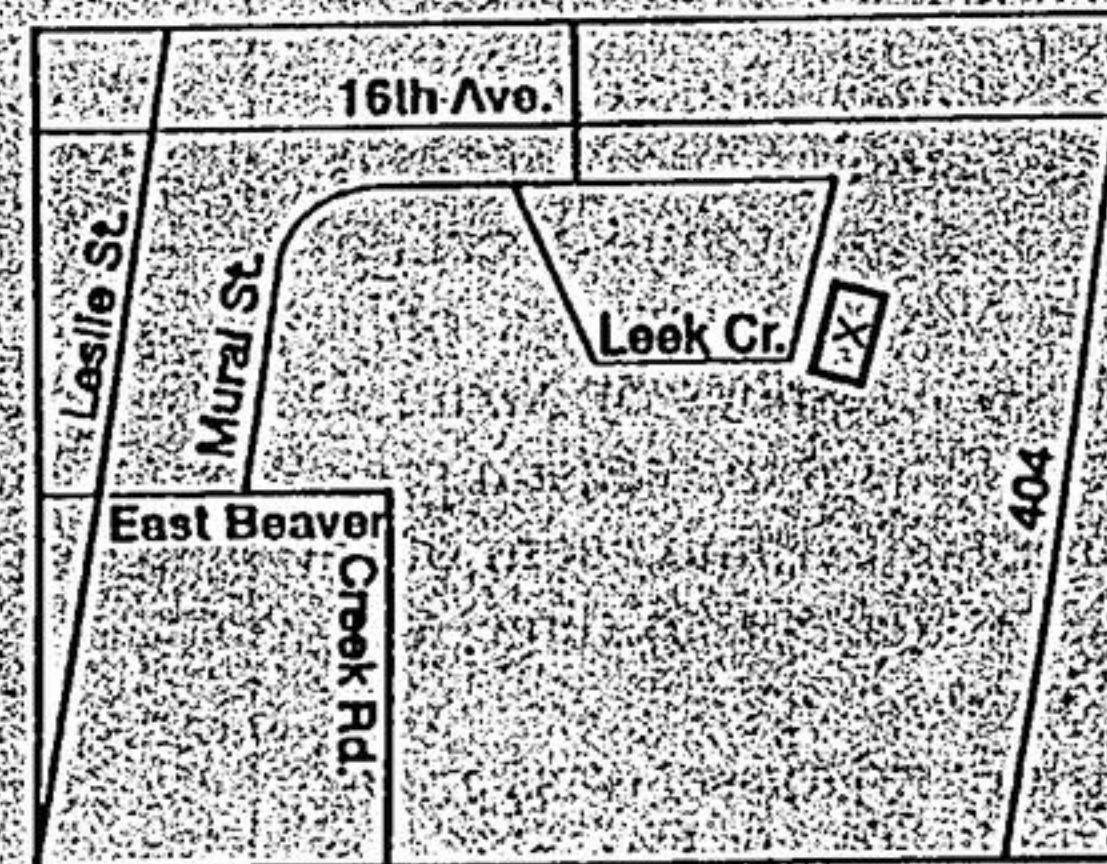
Saturday, June 10th 9AM - 4PM

Sunday, June 11 10AM - 3PM

### LOCATION:

SHISEIDO DISTRIBUTION CENTRE

60 Leek Crescent  
 Richmond Hill, Ontario



SHISEIDO & ORLANE

QUANTITIES LIMITED, CASH OR VISA ONLY.

## Leash-free dog park on hold

BY JOAN RANSBERRY  
 Staff Writer

The move to establish a leash-free dog park at Stouffville's Hoover Drive has been put on hold.

Whitchurch-Stouffville council has agreed to delay setting up a fenced-in area at the end of Hoover Drive, near the storm management pond facility, to allow more time for public input.

A public meeting will be held to consider the options, including reviewing alternate sites.

A 15-member Association of Dog Owners has been established and is expected to help manage the project if council approves it.

Leash-free parks are popular in the United States and many Canadian cities, including Toronto and Mississauga.

Currently, unleashed dogs are not permitted, by law, to run free in parks. Dog owners face a maximum fine of \$130 for allowing dogs to run free.

"Dog-friendly areas" are popular because they produce a safe place for dogs to exercise and socialize with other dogs and people, town clerk Michelle Kennedy has reported.

## You want to know more about:

- Finding a job?
- Connecting Canadians?
- Safe boating?
- Starting a business?
- Children's services?
- Health and quality care?

The Government of Canada is making it easy for you to reach us. One-stop access for information on more than 1,000 services is available at your fingertips.

Don't hesitate to contact us at:

1 800 O-Canada  
 1 800 622-6232

www.canada.gc.ca

TTY 1 800 465-7735

Canada