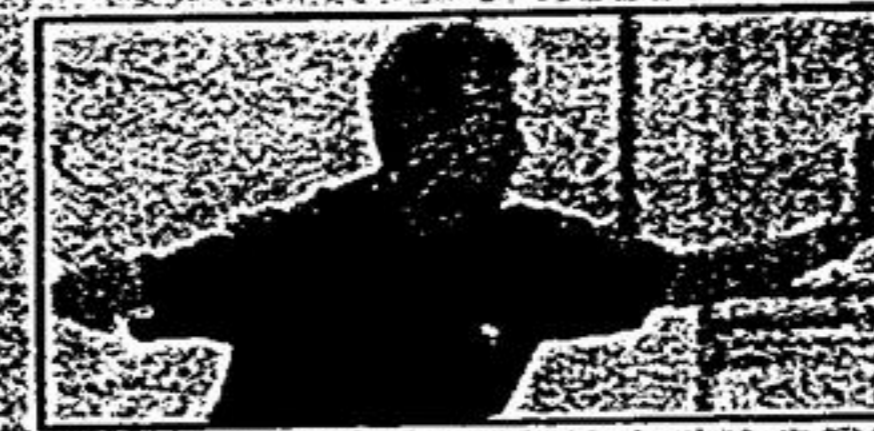


**INSIDE:** Opinion 6  
 Crime 10  
 Sports 17  
 Classified 18

**3** Activist hails death knell of youth crime bill meant to replace Young Offenders Act.

**ARTS & CULTURE CALENDAR**

**EVENT:** Opening of Works on Paper exhibit  
**WHEN:** Tomorrow, 1 to 4 p.m.  
**WHERE:** Latham Gallery East, Stouffville



**14** Heal body and soul with Tai Chi, which is said to slow the aging process.

SERVING WHITCHURCH-STOUFFVILLE SINCE 1888

# Stouffville Tribune

50 CENTS INCLUDING GST / 36 PAGES

SATURDAY, JUNE 3, 2000

TO REACH US: (905) 294-2260

## Stouffville moves on fears over well water

Mayor urges all wells be capped

BY JOAN RANSBERRY  
*Staff Writer*

Action is being taken to protect residents of Musselman Lake and Ballantrae against the deadly E. coli bacteria, vows Whitchurch-Stouffville Mayor Wayne Emmerson.

Lawyers have been called in to review the threat involved with uncapped private wells, which carry a potential health threat in both villages.

If a connection is made between a private well and a municipal well, there's potential for contamination, including E. coli, Stouffville plumber Tom Winters said.

Winters is not alone in his opinion.

"Anyone who cross connects is putting their own lives and the lives of their neighbours at serious risk," said Oryst Zynar, director of York Region's health protection division.

Zynar urges the municipality to take whatever measures it can to protect residents against water contamination. Municipal plumbing inspectors can access private property on a complaint basis and check things out, Zynar said.

Emmerson is consulting town lawyers to find out what legal avenues are available. Options include forcing residents to cap or abandon their wells in both villages or having back-flow or

See NO EVIDENCE, page 9

## COURT EMPLOYEE BLEW WHISTLE AFTER SHE AND OTHER WORKERS FELL ILL

# Mould closes courtrooms

BY LISA QUEEN  
*Staff Writer*

The Ministry of Labour has ordered four courtrooms and five judges' chambers at the Newmarket courthouse closed indefinitely due to the risk of toxic mould.

An eight-foot wood and tarp structure blocks the entrance to the courts and judges' chambers on the

third floor, while another courtroom sits empty with the lights turned off on the first floor.

The orders under the Occupational Health and Safety Act came Thursday, the same day a civilian employee of the York Regional Police Force blew the whistle on illnesses employees at the building have been suffering for months because of the mould.

Lori Patrick, a records and

inquiry bureau clerk, is now left wondering why the courthouse isn't being closed down and operations temporarily relocated until the mould is removed.

"If this is serious enough to close areas of the building, why are we all still working there every day?" Patrick said.

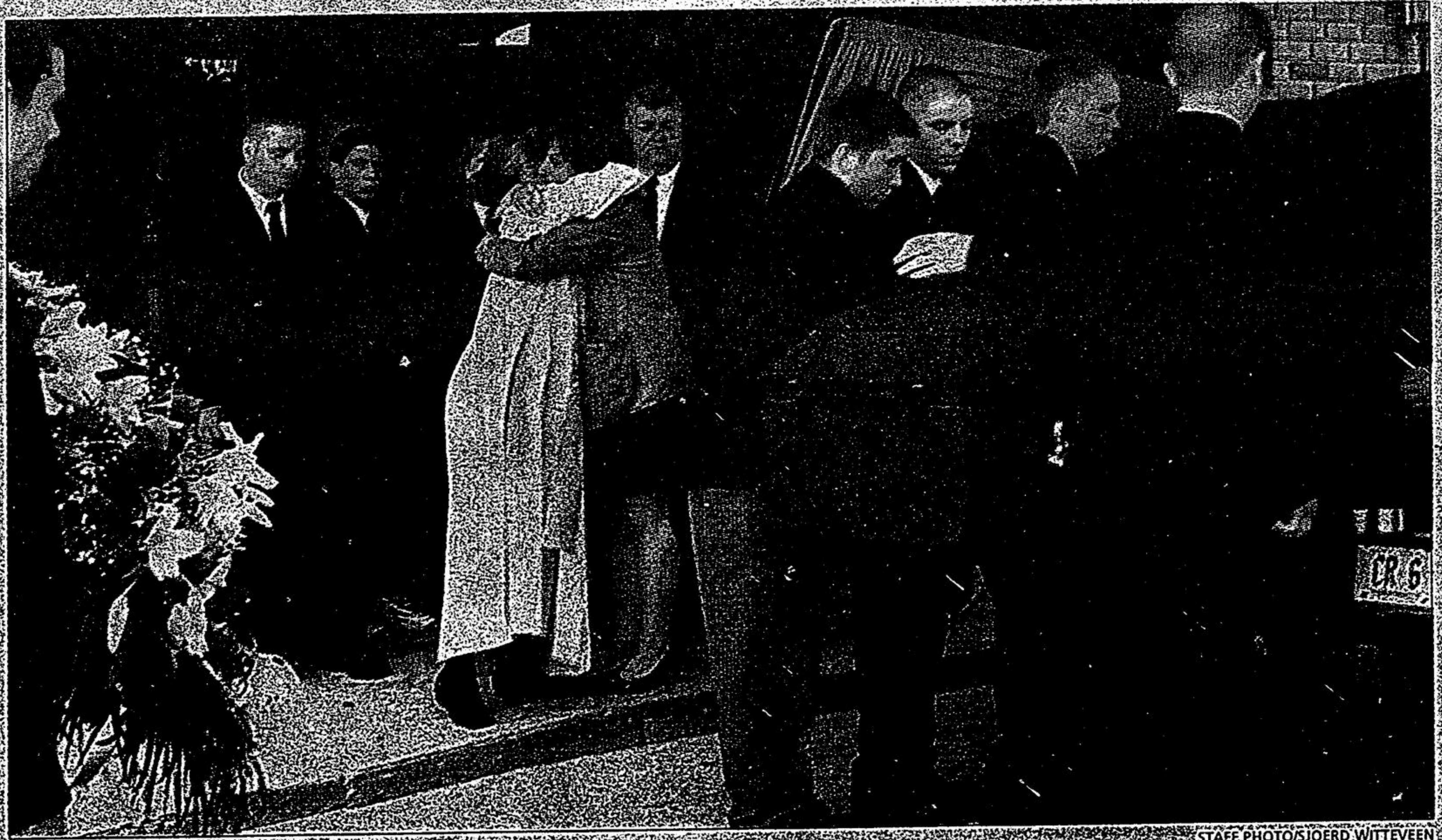
"I don't think we're quite there (in getting the problem resolved) yet."

Patrick also questions why notices alerting the public to the hazards at the courthouse still haven't been posted.

She said a copy of a union health hazard bulletin was posted at the building's entrance Friday morning, but it had been taken down by lunch time.

While Patrick still fears repercus-

See EMPLOYEE, page 11



STAFF PHOTOS/JOERD WITTEVEN

## FOND FAREWELL

Janet Pagan, mother of Chris Pagan who drowned in a canoe accident on Lake Scugog, receives a hug from Rev. Dr. Lillian Perigoe, who conducted the memorial service at Springvale Baptist Church Thursday afternoon, while pallbearers lift the coffin into the hearse. See page 7.

**MERCEDES BENZ**  
 REPAIR SPECIALIST  
 1905L-5605  
 Tuning  
 Suspension  
 Conditioner  
 471-8660

MPV 626  
 0% FINANCING 36 MONTHS  
 ENERGY GUIDE  
 GENUINE MAZDA  
 SERVICE PARTS AND ACCESSORIES  
 MARKHAM MAZDA 5396 HIGHWAY #7 294-1210

ALL OTHER MAZDAS  
 2.9% FINANCING 48 MONTHS  
 MARKHAM MAZDA

Sutton GROUP  
 Town and Country Realty Ltd.  
 640-0888