

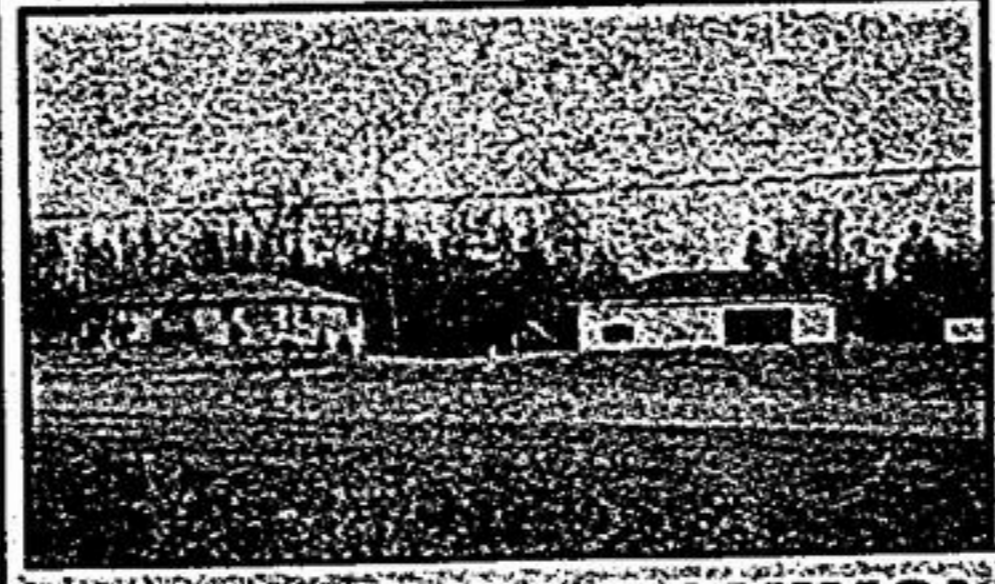


Joseph R. Gallo

TOO NEW FOR PICTURE!
\$459,900.
 Custom built 3100 sq. ft. bungalow with 3 car garage • 10' ceilings • Hardwood flrs • Built-in appls • C/vac • C/air • High eff. gas • 3/4 acre lot + more. **Joseph R. Gallo***



JUST LISTED!
 Bungalow in sought after area, nestled on mature 66' x 184' lot. Country kitchen • Hardwood floors • Stone fireplace • New windows + furnace. Call **Joseph R. Gallo***

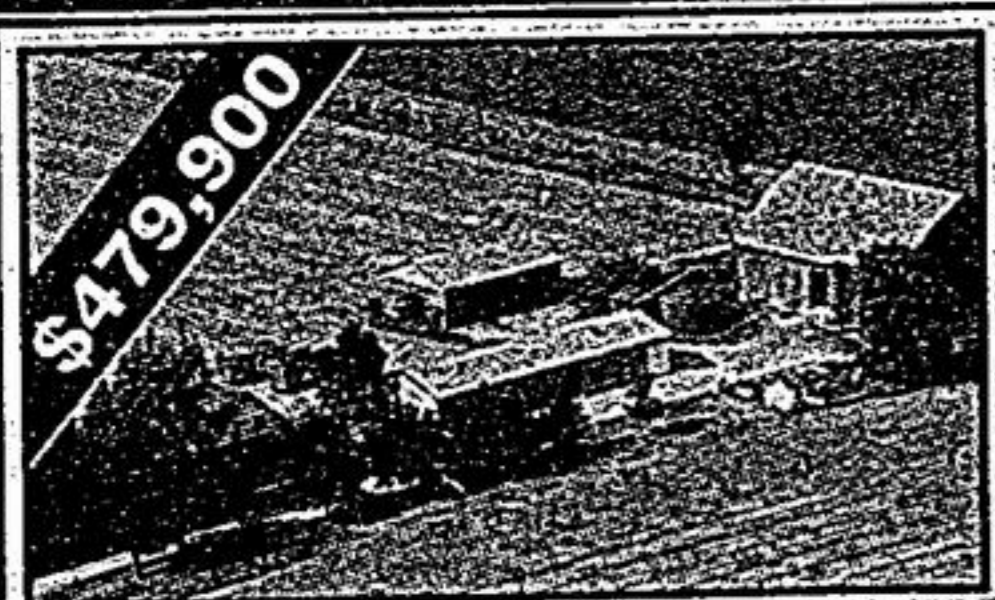


INDUSTRIAL ZONING!
 Hwy #48 frontage of 459 feet. Renovated 3 bdrm bungalow with kit, appls • Heated 24' x 40' workshop w/overhead doors. Great potential. Call **Joseph R. Gallo***



Meadows of Ballantrae!

Carrville Homes Award-Winning Builder
 Have you been looking for the perfect setting for your new home? Your frustration is over! Ballantrae has long existed near Aurora Sideroad and Highway 48, but only recently has bloomed with well planned estates, golf courses, reforestation trails, a public school, a community centre, a new fire hall, town water, natural gas and cable TV. Make the Meadows of Ballantrae your new address. Lot size is 100 x 500 feet.
 This new home is designed with today's lifestyles in mind. There are five floor plans to choose from or bring along a plan of your own. Victoria reproduction plans will be available with gingerbread trim at Purchaser's option.
MODEL HOME NOW OPEN Sat. & Sun. 12-5 p.m.
 BUNGALOW 2450 SQ. FT. IMMEDIATE POSSESSION
 GAPE COD 2730 SQ. FT. READY TO MOVE
 2 Model Homes for sale with immediate possession.
 Prices start at \$329,900
 GST Included.
 We've got it all!
Come and Compare. **ONTARIO NEW HOME WARRANTY PROGRAM**
Price ... Location ... Quality ... and Value ...
 For details of the custom features, call **Ross Gallo - 905-640-1200**



PEACE & TRANQUILITY
 Exceptional 88 ac. farm - 1st time offered since 1932. Restored 4 bdrm Century home w/bsmt. • Implement barn - 30' x 88' • Hay barn - 31' x 48' + 72' x 50' barn. A must see! Call **Joseph R. Gallo***



EXTRA SPECIAL HOME!
 Beautifully appointed with many extras - finished basement • 2 gas fireplaces • 4 bathrooms • Inground pool with gazebo • Sprinkler • Prof. landscaped. A must see.
 Call **Joseph R. Gallo***



JUST LISTED! \$249,900.
 Fabulous 3 bdrm. home • Ceramics • Parquet flrs • Custom oak banister & stairs • Partly fin. bsmt. • C/air • C/vac • Prestigious College Manor. Call **Joseph R. Gallo***



INCOME PROPERTY
 Hwy #48 - frontage of 266 feet • 3 bdrm country home • 30' x 40' workshop • \$1500/mth. Rare opportunity. Call **Joseph R. Gallo***



WOW! \$169,000 WOW!
 Unique design 3 bedroom beauty with skylights, pine floors, fireplace, sauna, heated workshop. Hurry! Don't be disappointed. **Wayne Keeler*, 905-640-1200.**

MAPLE PARK ESTATES BALLANTRAE

Hwy. 48 & Aurora Sdrd. 29 lots - 1-1/4 acre each, town water and natural gas. Draft plan approved. Lot size approx. 180' x 300'. Starting at **\$118,000.** & up. Call **Ross Gallo*, 905-640-1200.**

INVESTOR OR BUILDER OPPORTUNITY

34 lots, draft plan approved. 1-1/4 acre each with town water and natural gas. Very close to Stouffville town. Priced to sell, must be sold as a package. Call **Ross Gallo*, 905-640-1200.**

CLOSE TO STOUFFVILLE TOWN

24 acres vacant rolling land, adjacent to approved subdivision. Possible future - 18 lots. Priced to sell, only **\$399,000.** Call **Ross Gallo*, 905-640-1200.**



Kim Reesor
 Top Producer
FREE EVALUATION!
COMPETITIVE RATES
SERVICE!
EXPERIENCE!

27 ACRES! POND!
\$224,900.
 Southern exposure! Situated on paved road! Minutes west of Uxbridge! Building permit available. **Kim Reesor***



ESTABLISHED NEIGHBOURHOOD!
 Spacious 4 bedroom! Large principal rms! 4 baths! Main floor laundry • access to garage! Fin. rec rm! Private yard! Walk to GO train! Schools! Call **Kim Reesor***



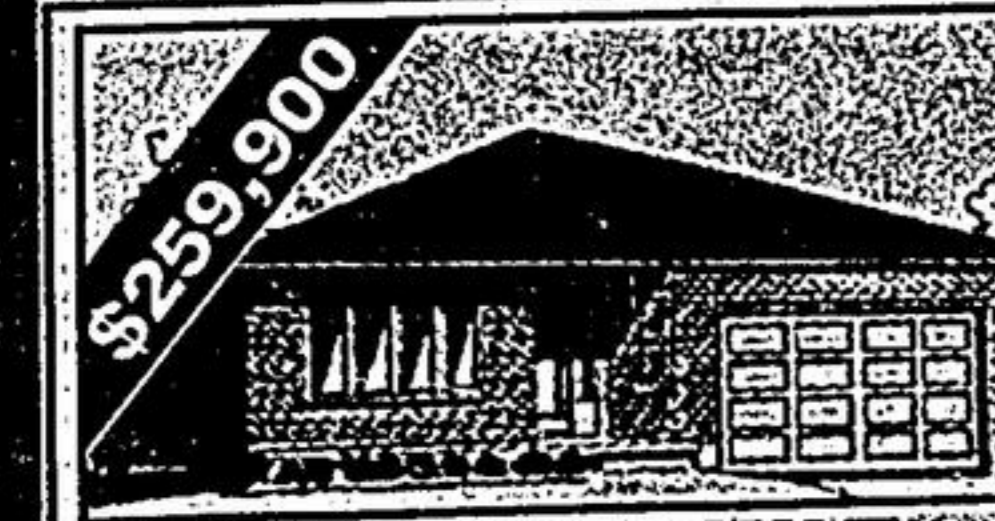
TOWNHOUSE!
 Open concept! Walk-out to deck, master bedroom ensuite & finished rec room! Cul-de-sac location! Walk to Lehman's Pond! Call **Kim Reesor***



WHY PAY RENT?
 Starter home! North of Uxbridge 70' x 220' lot! Tidy 2 bedroom! Living room, airtight stove! Oversized garage! Appliances! Call **Kim Reesor***



AURORA TOWNHOUSE
 Spacious 4 bedroom! Formal liv. & din. rms. finished rec. rm. - walk-out to patio, main floor laundry! Outdoor pool. Easy access to 404! Call **Kim Reesor***



CUSTOM BUILT BUNGALOWS!
 Uxbridge! 57' x 140' ft. lot! Open concept, gas fireplace! Country kitchen with walk-out to deck! Call for details! Call **Kim Reesor***



Elaine Kalmbach*

BUILDING THIS SUMMER? NEED THE PERFECT LOT?
 Take a drive by 21 Kennedy Lane (just SW of Stouffville/Kennedy Rd.) to see this perfect 2 ac. awaiting your dream home in a prestigious "country" neighbourhood, call **Elaine Kalmbach*** to make this your new address! 905-640-1200.



LOOKING FOR HIGHWAY FRONTAGE?
 Look no further! (just north of Stouff. Rd. on Hwy. 48). Recently renovated, new flr., this 4 bdrm. home with woodstove insert, sunroom & family rm. will surprise you with its spaciousness. 82' x 132' lot. Need truck parking? Call **Elaine Kalmbach* ASAP 905-640-1200.**

REQUIRE FINISHED INDUSTRIAL SPACE?

Approx. 900 sq. ft. of 2 private office, large reception, washroom & storage area + 200 sq. ft. of shipping/receiving with drive-in level door. Stouffville location. Call **Elaine Kalmbach*, 905-640-1200**

OFFICE CONDO STOUFFVILLE

Vendor says, sell! 500 sq. ft. for **\$39,900.** or rent for **\$400/mth.** Interior finished, street level. Excellent location, south facing, bright unit! Call **Tony Campagna*** today! 905-640-1200.