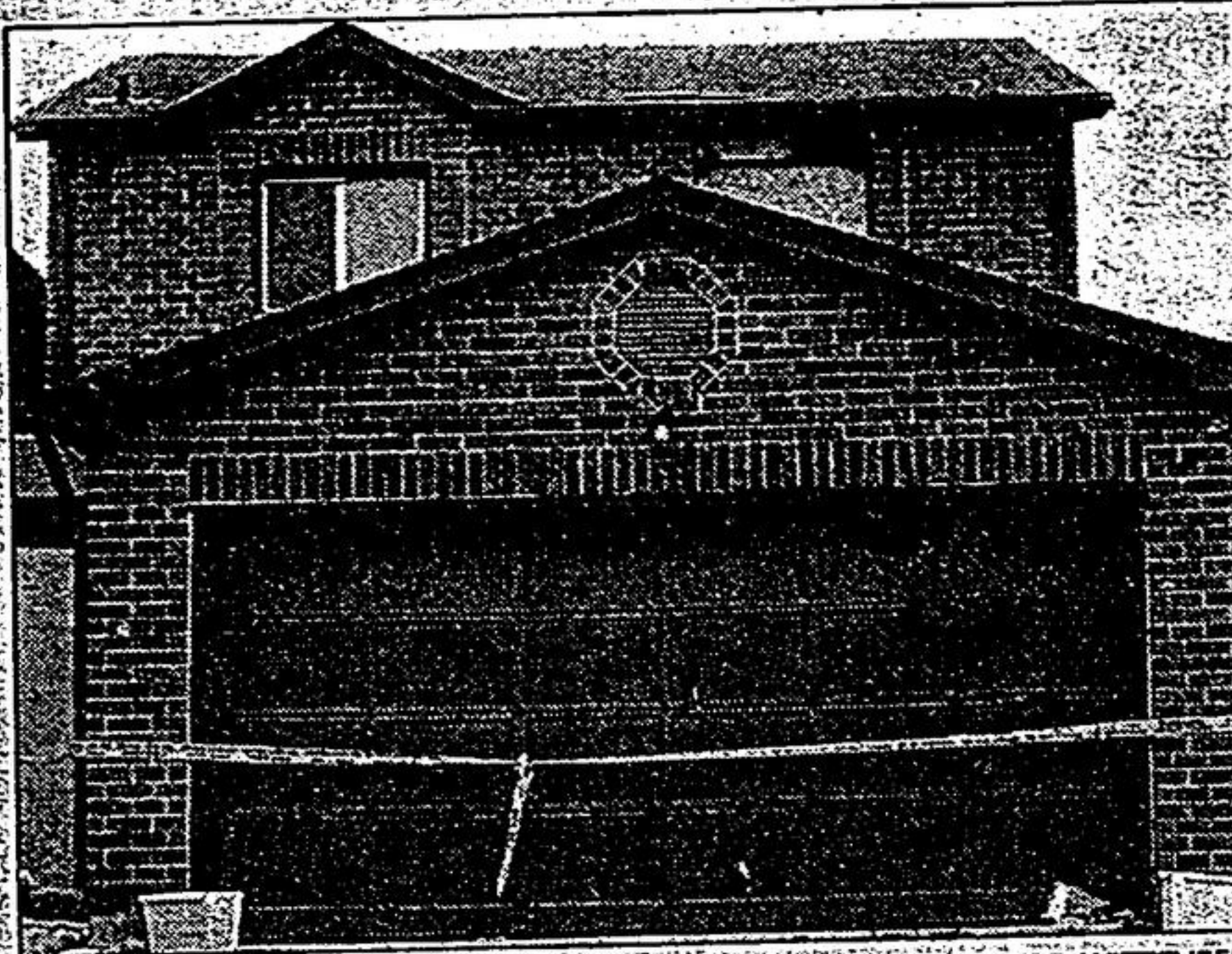




**UNIONVILLE VILLAGE FESTIVAL**  
**JUNE 2-4, 2000**  
 KALLING ALL KRAZY BOATERS  
 WITH AN "ATTITUDE"!!  
 BUILD YOUR OWN KRAFT FOR  
 GREAT  
 FUN AND PRIZES!!!

THE KRAZY KRAFT RACE AT TOOGOOD  
 POND, SATURDAY, JUNE 3RD, 3:00 PM  
 For more information or to register prior  
 to race day call:  
 Judy Saulnier, (905) 944-0793



STAFF PHOTO/SJOERD WITTEVEEN  
 A blaze at this Hendon Avenue house caused \$100,000 in damages. Police discovered a marijuana lab in the basement.

# Rented house used as lab for marijuana

From page 1.

doubts they'll ever return.  
 "They're likely hiding out somewhere," he said.  
 He said only the kitchen looks like it was used on a regular basis. The dining and living rooms contained nothing but mattresses.

It appears the fire started around the remains of a lamp in the dining room. It did not extend to the basement but caused extensive damage to the main floor.

"Those people are not likely to come back. There's no large loss here, the personal loss is minimal," Fleming said. "Even the lab in the basement was half-hearted, an amateurish grow."

Pots for more than a dozen plants were found in the basement, but they contained only roots and stems. The plants had been recently harvested, although the lighting equipment system was still operational and could be activated any time, Fleming said.

The house was rented, the owner lives in Hong Kong. The rental agent believes it was rented to a family. She gets cheques regularly, but really has no idea who lived there.

A woman in the neighbouring house, who was forced out to the street with her husband and seven-year-old daughter at about 2 a.m., said she rarely saw the occupants.

"No one knew them. Once in awhile I'd see a man or two men, but they didn't look very friendly," said the woman, who asked that her name not be used.

The men appeared to be in their 30s, she added.

Two windows on her home were broken from the heat, including the one in her daughter's bedroom, who was suffering from chicken pox.

"We had just gotten to sleep, then somebody came and knocked on my door. We came down and saw beautiful flames up in the sky. We didn't expect that," she said.

# Man dies after family fight

A man critically injured during a fight with his brother died Wednesday at Markham Stouffville Hospital.

A charge of aggravated assault against the brother, Stephen Shepard, 29, of Markham, will now be upgraded to a more serious charge, police said.

David Jonathan Shepard, 33, was rushed to hospital Sunday after a dispute with his brother turned physical and he collapsed in the family's Featherstone Avenue home.

When paramedics arrived, the man didn't have any vital signs.

While he was revived briefly, Shepard remained on life support systems until his death.

An autopsy conducted Thursday found the cause of death to be asphyxiation, but police won't say exactly how Shepard died.

Both brothers lived in the house, David Shepard upstairs with his mother and sister, Stephen Shepard downstairs with his wife and children.

— Kathleen Griffin

# VILLAGE NISSAN

4600 Hwy. #7, Markham [www.villagenissan.com](http://www.villagenissan.com) (905) 477-3337



## THE ALL-NEW 2001 SENTRA

126-HP 1.8-litre engine · Air conditioning · 4-speaker AM/FM with CD audio system · Colour-keyed body side mouldings and door handles · 8-way adjustable driver's seat · Centre console armrest · Vanity mirrors, and more.

**\$16,398** OR  
 Lease for only **\$198**/mo.  
 for 48 months only \$1,500 down



## THE 250-HP 2001 PATHFINDER

Power Changes Everything · 250 HP 3.5 litre DOHC engine · 4-speed automatic with overdrive · 265 ft-lb torque @ 3,200 RPM · All Mode 4-wheel drive (automatic 4-wheel drive selector dial) · Fuel tank skid plate · 16" alloy wheels · Air conditioning · Bose acoustically tuned audio system · Upgrade 6-disc in-dash CD autochanger · Power sliding glass sunroof · And much more.

Pathfinder XE starts at \$34,700  
 Pathfinder SE Automatic is only  
**\$40,200** OR  
 Lease for only **\$488**/mo.  
 for 48 months only \$4,000 down

The Nissan Enjoy the Savings Event Continues and now includes our new 2001 models!

get **2.8%** financing OR  
 Lease for only **\$368**/mo.  
 for 48 months only \$4,500 down

## 2000 MAXIMA GXE

222 hp 3.0 litre V6 engine · Automatic transmission · 6-speaker 120 watt AM/FM/CD with cassette audio system · Automatic climate control air conditioning · Anti theft system · Heated power front seat · Remote entry system, and more.

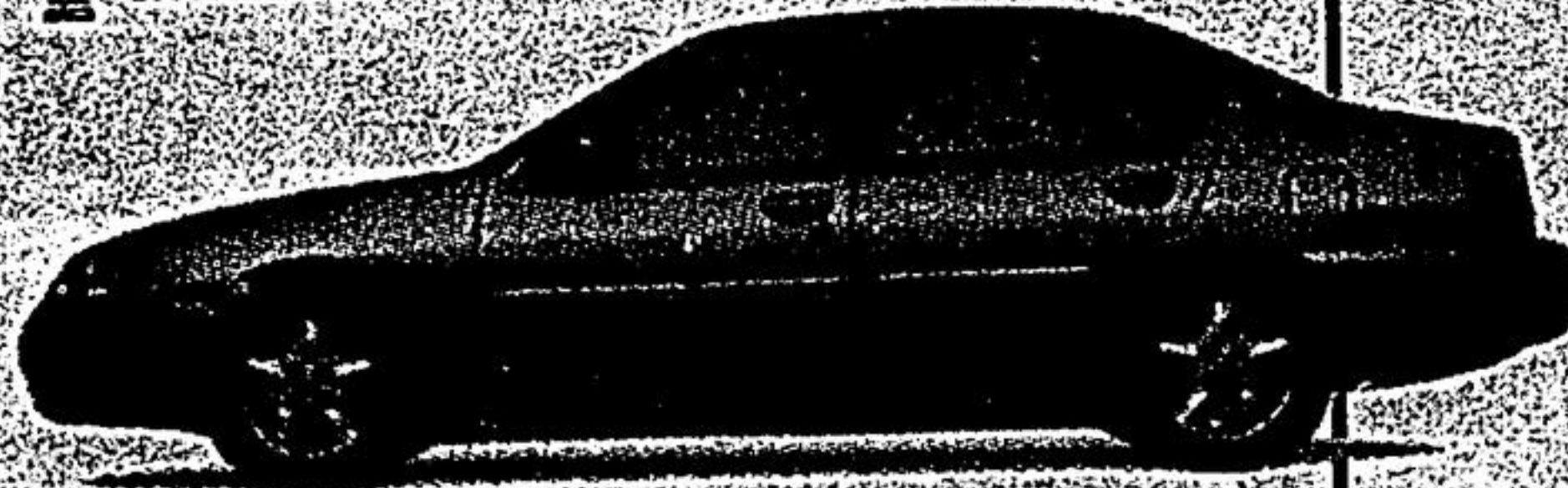


\*2000 Maxima GXE: Car of the Year Award Winner for Best New Family Car\* (more than 25,000)

get **2.8%** financing OR  
**LOW LEASE RATES**  
 special cash purchase price  
**\$21,498**

## 2000 ALTIMA GXE

155 hp 2.4 litre engine · 100 watt AM/FM/CD audio system · 4 speed automatic transmission · Air conditioning · Remote keyless entry system with panic alarm · Dual airbags · Power windows, mirrors, door locks, trunk release and more.



\*2000 Maxima SE: Car of the Year Award Winner for Best New Sports Sedan\*  
 AUTOMOBILE JOURNALISTS ASSOCIATION OF CANADA

Catch the savings before they're all gone at [www.smile-event.com](http://www.smile-event.com)



We are Rated The No. 1 Nissan Dealer in Canada



Smart people always read the fine print. And they always wear their seat belts. Limited-time lease offers on 2001 Sentra XE with value option package (C4LG51 BK00); 2001 Pathfinder SE Automatic (SCS071 AE00); 2000 Maxima GXE (U4FRG70 CK10). 48-month lease; 5.95% financing; 7.9% A.P.R. down payment or equivalent trade of \$1,500/\$4,000/\$4,500. Leasee based on a maximum of 90,000 km/96,000 km/96,000 km with excess km charged at \$0.10/\$0.10/\$0.08/km. All offers are O.A.C. and exclude destination and delivery (Sentra \$857/Pathfinder \$972/Altima \$915/Maxima \$969). Licence, Insurance and taxes. 12.8% financing available on all items, based on \$30,000 at 2.8% per annum equals \$960.70 per month for 36 months. COB is \$1312.44 for an obligation total of \$31,312.44. \$30,000 at 8.6% per annum equals \$940.42 per month for 36 months. COB is \$4,143.12 for an obligation total of \$34,143.12. Financing examples: \$20,000 at 2.8% per annum equals \$579.95 per month for 36 months. COB is \$274.96 for an obligation total of \$20,874.96. \$20,000 at 8.6% equals \$632.28 per month for 36 months. COB is \$2,752.08 for an obligation total of \$22,782.08. See your Nissan Dealer for details. †The Nissan Altima was the Highest-ranked Entry Midsize Car in J.D. Power and Associates' 1999-07 and 1999 U.S. Initial Quality Study. 2. 5M 1999 study based on a total of 41,004 consumer responses indicating owner-reported problems during the first 90 days of ownership. DRIVEN and the Nissan logo are Nissan trademarks. \*For 'A' Size Dealers for 1999.

NEW SERVICE HOURS

Mon. - Thurs. 7-9 pm, Fri. 7-5:30 pm, Sat. 8-3 pm