

Broomfield runs into bad luck

Erica Broomfield ran into an old adversary recently.

And it's one the 22-year-old former Milliken Mills Secondary School student thought she had eliminated from her aspiring track career.



ERICA BROOMFIELD

Hopes to shake off another leg injury

At the recent Eastern College Athletic Conference indoor track and field championships, Broomfield captured the 60m event.

But the win did not come without a price as she sustained an injury to her left hamstring.

The misfortune incurred by the Seton Hall University junior

marked the third year in a row the injury bug caught up with her.

Not helping matters this year, she noted, is that, with the Summer Olympics coming up in Sydney, Australia in September, Broomfield is setting her sights on trying to earn a berth on the Canadian national team.

"It's basically been a frustrating time for me, knowing the type of athlete that I am and in trying to make it to the nationals and not being able to compete because of injuries," she said from her East Orange, N.J., residence.

Prior to the injury, Broomfield was experiencing a strong performance at the championships as she recorded the top seeded times in the 200m and 400m relay. In the latter event, Broomfield ran a 52.9, a personal best for her in an indoor relay event.

Running in just three 60m events and two 200m races in her indoor campaign over the winter months, Broomfield set a meet record in the 60m at the Big East championships after running a 7.30.

This eclipsed her old Big East mark by 15-hundredths of a second. In the 200m, Broomfield finished second with a time of 23.70 and was just one-hundredth of a second out of top spot.

In the National Collegiate Athletic Association indoor rankings, Broomfield was sixth in the 60m and fifth in the 200m.

With the injury, Broomfield has been unable to participate in any outdoor meets. She has, however, been rehabilitating her leg and is optimistic that it's on the mend.

If all goes well, Broomfield plans on making her outdoor debut this weekend in Ohio.

Sutton-Brown cages invitation

Markham resident Tammy Sutton-Brown, a centre on the Rutgers University women's basketball team that advanced to this year's NCAA Final Four, was one of 24 players selected to try out for this year's Canadian women's basketball team that will compete at the 2000 Olympics in Sydney, Australia.

The 6-foot-4, 22-year-old junior helped the Scarlet Knights basketball team compile a 26-8 overall record by averaging 12.2 points a game in the last 11 outings.

Sutton-Brown was also the club's third-leading scorer at 9.2 points a game and rebounder with 5.1 boards. In addition, she was named to the Big East Conference All-Tournament team.

The Markham District High School graduate is no stranger to international competition after having helped Canada earn a silver medal at last year's Pan-American Games in Winnipeg.

The Canadian team earned an Olympic berth after qualifying last May with a third-place finish at the COPABA Olympic qualification tournament.

TRUCKLOAD SALE

FINAL TWO WEEKS!

OUR STRIPS ARE NOT MADE FROM MINCED CHICKEN! THEY'RE MADE FROM SOLID CHICKEN BREAST FILLETS!

SAVE \$5

11.99 / 1.34 kg (3 lb)

LIMIT 3 PER CUSTOMER

9.99 / 1.34 kg (3 lb)

5.99 / 1.34 kg (3 lb)

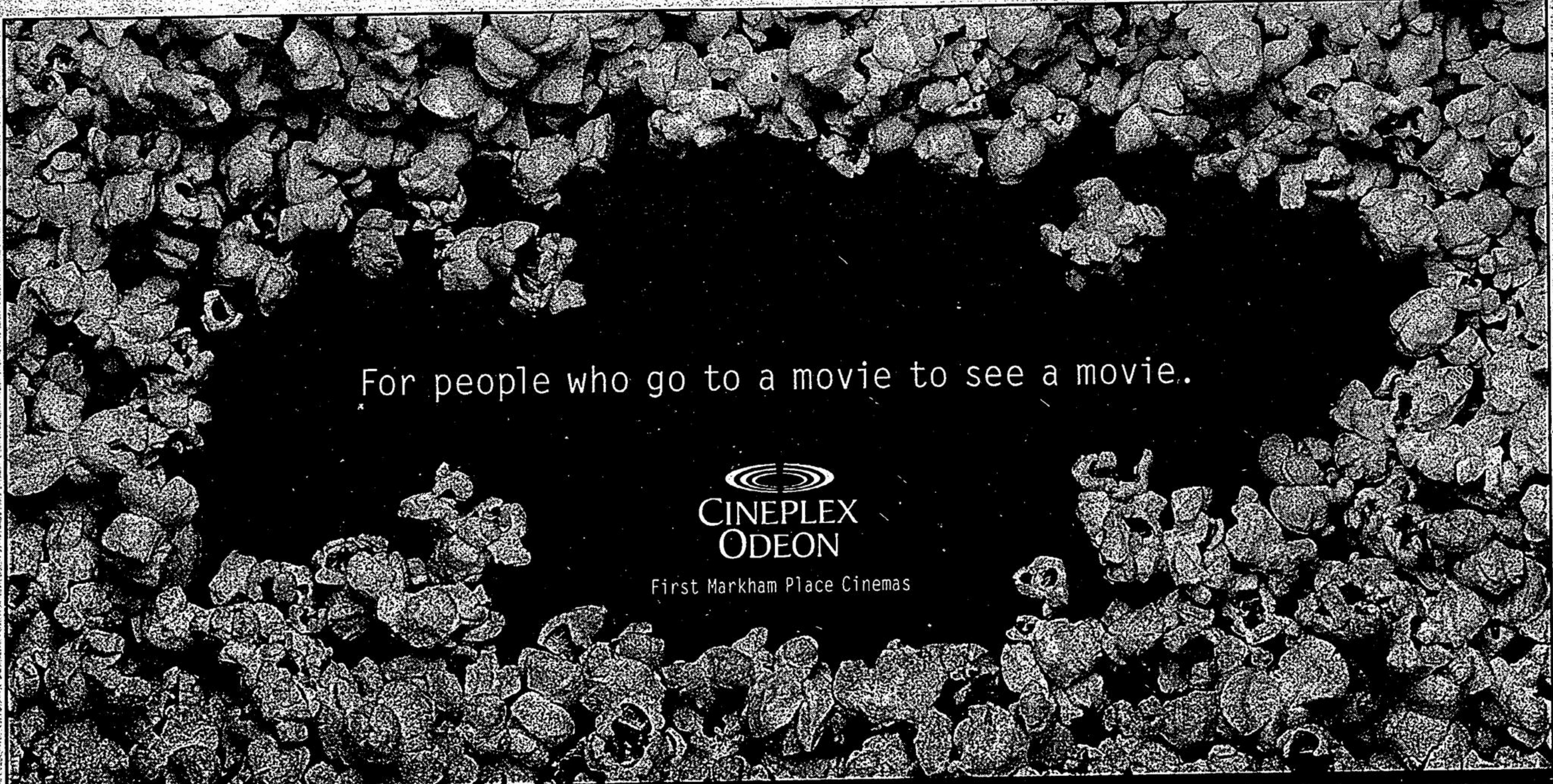
2.49 / 1.34 kg (3 lb)

Prices in effect Saturday, April 15, until Friday April 28/2000

MARKHAM
9275 Markham Rd. Hwy. 48
472-2028
(in Sunkist Plaza)

UNIONVILLE
4261 Hwy. 7
474-1891
(in Shoppes of Unionville)

STOUFFVILLE
5812 Main Street
642-9334
(next to Stouffville Chrysler)



For people who go to a movie to see a movie.

CINEPLEX ODEON

First Markham Place Cinemas

Welcome to Cineplex Odeon First Markham Place Cinemas. Here, every theatre is designed to bring you an exceptional cinema experience. The theatres are brought to life with your choice of 10 wall-to-wall curved screens, exciting, digital surround sound and comfortable high-back rocker seats. Sit back, relax and lose yourself in a great movie experience.

<p>U-571 (PG) NO PASSES, ON 2 SCREENS FRI-MON 12.50, 1.20, 3.30, 4, 6.50, 7.20, 9.30, 10, TUE-THURS 6.50, 7.20, 9.30, 10</p> <p>28 DAYS (AA) FRI-MON 1.40, 3.55, 6.55, 9.25, TUE-THURS 6.55, 9.25</p> <p>WHERE THE MONEY IS (PG) FRI-THURS 9.40</p>	<p>AMERICAN PSYCHO (R) FRI-MON 1.30, 4.30, 7.30, 10.05, TUE-THURS 7.30, 10.05</p> <p>KEEPING THE FAITH (PG) FRI-MON 1, 3.50, 6.40, 9.35, TUE-THURS 6.40, 9.35</p> <p>READY TO RUMBLE (PG) FRI-MON 1.35, 4.20, 7.15, TUE-THURS 7.15</p>	<p>HIGH FIDELITY (PG) FRI-MON 1.25, 4.25, 7.05, 9.45, TUE-THURS 7.05, 9.45</p> <p>ERIN BROCKOVICH (AA) FRI,SUN-MON 1.10, 4.15, 7, 9.55; SAT 1.10, 4.15, 9.15; TUE-THURS 7, 9.55</p> <p>WHERE THE HEART IS (PG) SNEAK PREVIEW SAT 7</p>	<p>FINAL DESTINATION (AA) FRI,SUN-MON 1.05, 3.40, 6.50, 9.20; SAT 1.05, 3.40, 9.45; TUE-THURS 6.50, 9.20</p> <p>FREQUENCY (PG) SNEAK PREVIEW SAT 7.30</p> <p>THE SKULLS (AA) FRI-MON 1.15, 4.10, 7.10, 9.50, TUE-THURS 7.10, 9.50</p>
--	---	---	--

EFFECTIVE APRIL 21-27