

# Clock Tower Theatre has time on its side

BY JOAN RANSBERRY  
Staff Writer

Stouffville's Clock Tower is still ticking.

On Tuesday, theatre group spokesperson Eric Button assured council the plan to convert the vacant municipal building at Civic Avenue into a 400-seat theatre is still very much alive.

"People are asking about our plans. They're coming forward and they're volunteering. Yes, there is interest," said Button.

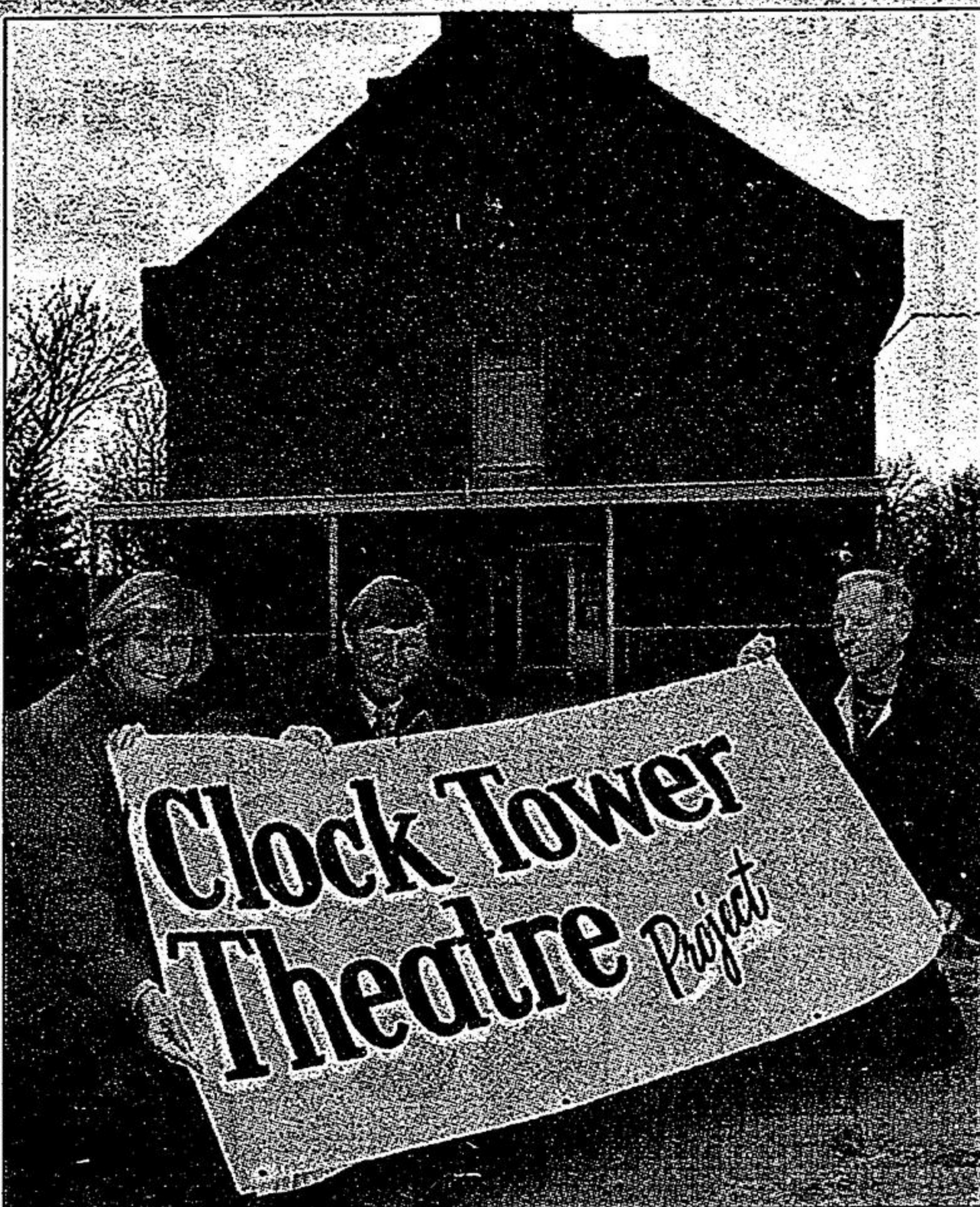
After a year of negotiating, the town and the Clock Tower Theatre Group struck an agreement which includes a \$1-a-year accommodation cost. Meanwhile, a consultant has been hired to help the group determine its fundraising strategy.

"We will be back in the fall with, hopefully, a positive report," Button said.

If the group has its way, the historic building will eventually house a multi-purpose facility with live theatre being the main focus. In keeping with the Whitchurch-Stouffville's Music Town Ontario theme, there will be plenty of music, Button stressed.

While theatre group officials set the financial stage — renovation could cost between \$2 million and \$3 million — music will continue to be heard in town. On May 7, beginning at 7:30 p.m., a blues, jazz and rock and roll artist will perform at Christ Anglican Church, while hometown classical guitarist Cory Livingston will take the stage there June 11 at 7:30 p.m.

Mayor Wayne Emmerson advised Button to "keep the project out in front" of the people.



STAFF PHOTO/SJOERD WITTEVEEN

The Clock Tower Theatre project is in full swing with (from left) project president Julia Topping, director Eric Button and group member Jim Rehill unfurling a banner in front of the old town hall Monday.

"People are enthusiastic about the prospects. There were some rumblings that this wasn't going anywhere. But now it is getting support. I hope we maintain the momentum," the mayor said.

After the financing is ironed out, closing Civic Avenue will top the agenda. Shutting the road would make the tower area a square to be used as a gathering spot for the public, Emmerson said.

## FOLKS

# Like father, like son

Parents and children celebrate anniversaries

Some well known local residents are celebrating anniversaries this week.

The Barthaus are known both in Stouffville and Markham for their jewelry business.

Kathleen and Lloyd Barthau will mark their 50th wedding anniversary on April 14 while Janet and David Barthau celebrate 25 years April 12.

Barthau Jewellers opened in Markham Sept. 12, 1968. The Stouffville store opened Sept. 12, 1978.

David's son is the third generation of Barthaus now involved in the family business.

Friends are invited to join the couples at a joint celebration this Sunday from 1 to 4 p.m. at Latham Hall. Best wishes only.



Janet Richards

### Real estate recognition

Stouffville's Dianne Woodcock-Elliott was recognized with three awards recently from Century 21.

Woodcock, an agent with the realtor in Scarborough, received awards for outstanding achievement and excellence in individual performance.

Congratulations, Dianne.

### Developer donation

Kudos to developer Joseph Lebovic for a recent donation to The Town of Whitchurch-Stouffville.

The \$5,000 donation is a cultural foundation grant from Lebovic.

### Happy 90th

Happy birthday to Stouffville resident John Harvey this weekend. Harvey will be celebrating his 90th birthday on April 8.

He and his wife still live in their own home on Lori Avenue.

### Celebrate spring

If you have a touch of spring fever, get out and celebrate the season at the Whitchurch-Stouffville Museum this weekend.

The museum, located on Woodbine Avenue in Vandorf, is hosting a spring celebration this Sunday from 11 a.m. to 2 p.m.

Ham, pancakes and local maple syrup are on the menu. Admission is \$5 for adults and \$2 for children.

### Model citizens

Residents are invited to the Stouffville Missionary Church Thursday, April 13 at 7:30 p.m. for the Women's Coffee Hour.

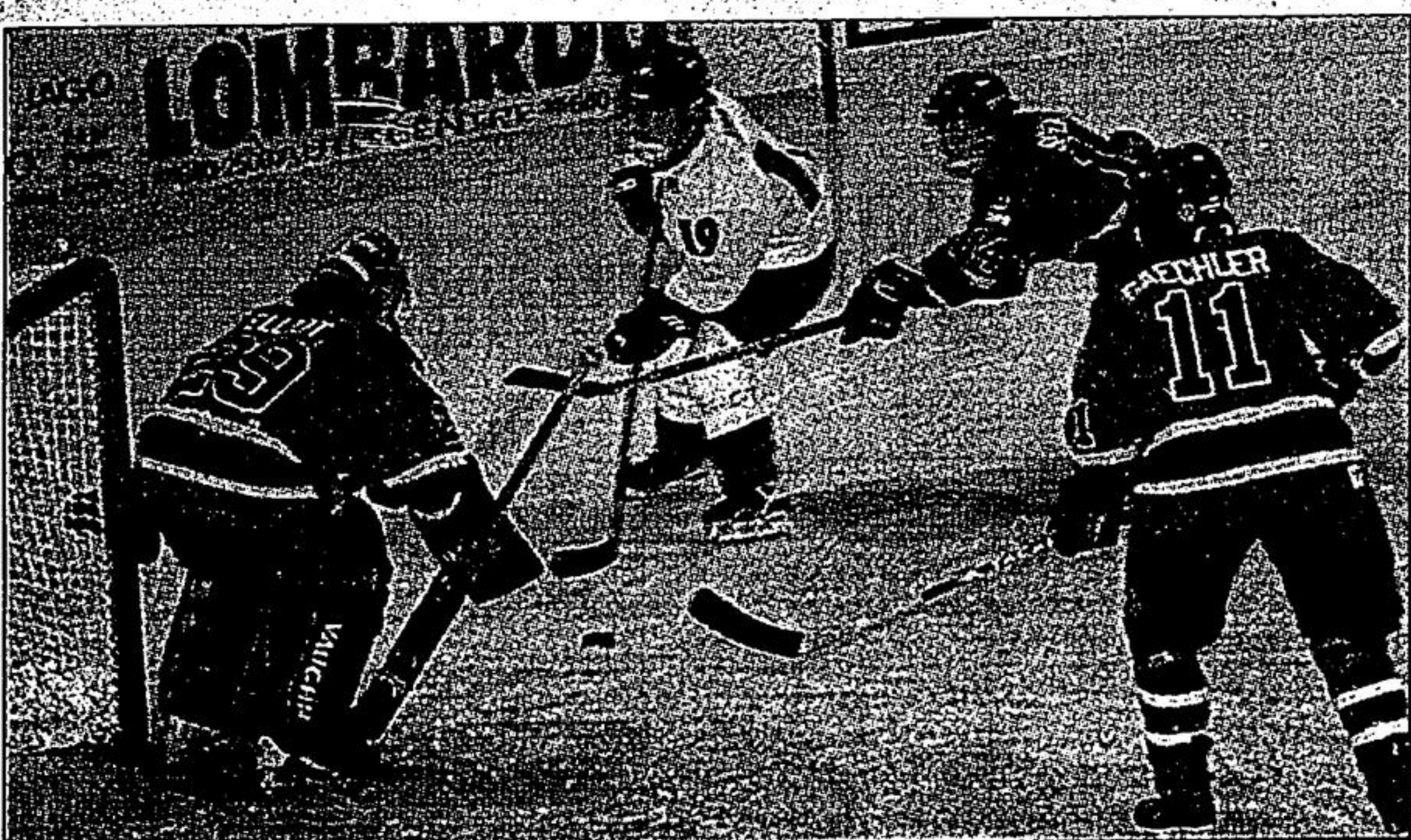
There will be a 50s fashion show followed by speaker and soloist, country and western artist Celeste Zugec.

## Let us know all your good news

If you have any good community stories, milestones, celebrations or accomplishments that you think would make an interesting item for the Folks column, please call Janet

Richards at 642-3482. Special birthdays and anniversaries, academic awards and volunteer recognition are some of the items to call about.

## INTERNATIONAL STARS ON ICE



Akiko Naka (#19), of the visiting Japanese women's hockey team, closes in on Scarborough Stars goalie Nicole Elliott while followed by Karen Spence (#14) and Mirjam Baechler (#11) in a game at the Stouffville rec centre last Thursday.

STAFF PHOTO SJOERD WITTEVEEN



STAFF PHOTO/SJOERD WITTEVEEN

Karen Rae models a 1950s outfit in preparation for the April 13 Good Times Fashion Show.

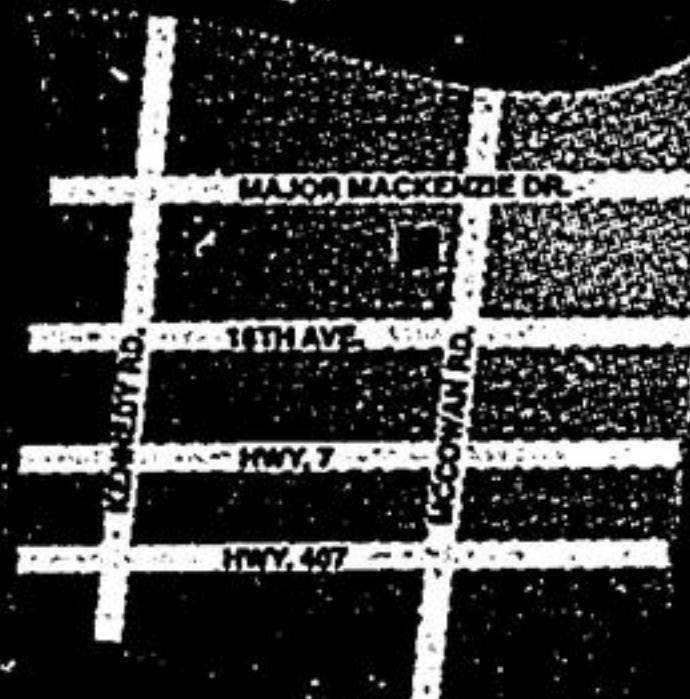
# It's the affordability that makes us different!

FROM \$174,900\* TO JUST OVER \$300,000\*

EMERY HOMES

CALL: (905) 471-9891 or 1-877-95-EMERY

Sales centre open on site. Hours: Mon-Thurs, 1-8 p.m. Sat, Sun & Holi, 11am-6pm. Closed Fri. Prices of interest correct at press time. Map not to scale. E.&O.E.



WILLIAMSTOWN

