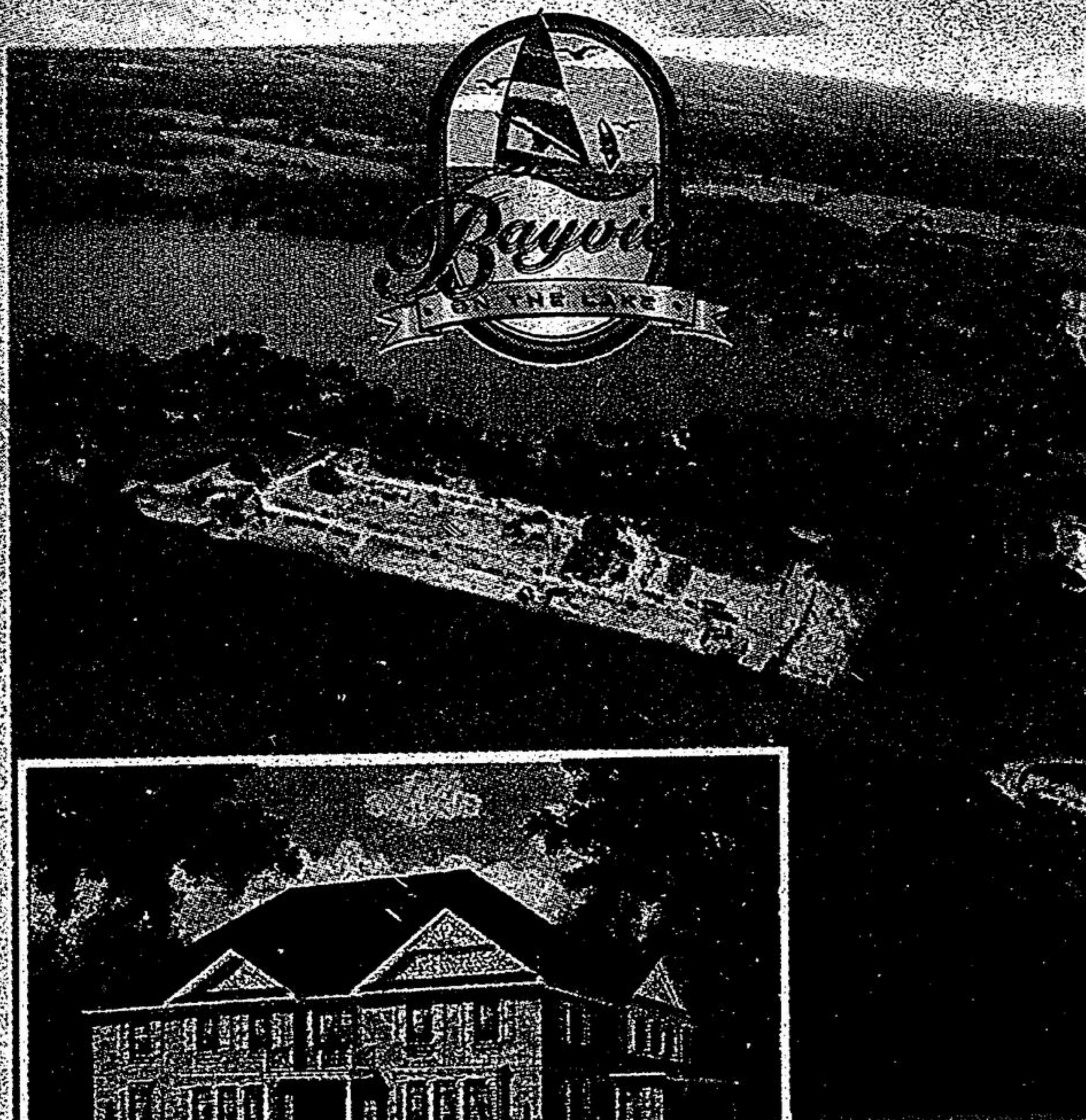


The Kaitlin Group Ltd.

The **Kaitlin** Group™

Building Excellence - Rising above the ordinary

*Decorated Model Home
Now Open in Richmond Hill*

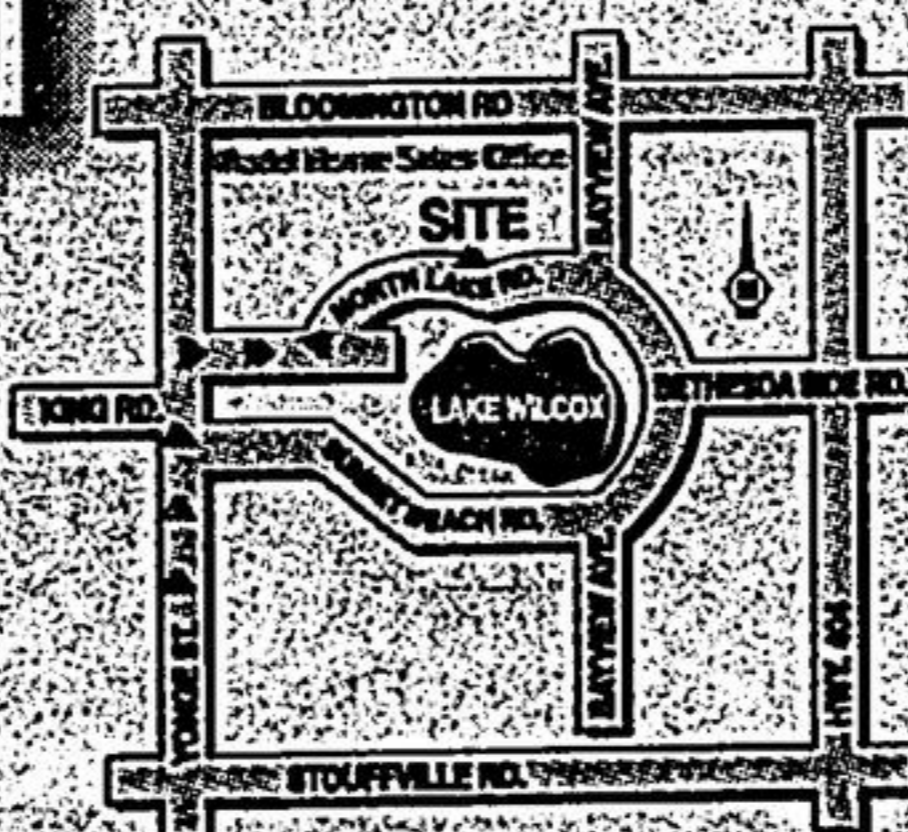


40' & 50' Stone & Brick executive designs on quiet crescents overlooking Lake Wilcox

from **\$249,990**

NOW UNDER CONSTRUCTION
IMMEDIATE/SUMMER CLOSINGS

Some walk outs still available • Upgrade bonus offer*



Mon. - Thurs.: 1 p.m. - 8 p.m.
Fri. By Appointment
Sat., Sun. & Hol: 11 a.m. - 6 p.m.
Call (905) 773-9888
*ask sales representative for details



**Grand Opening
Continues in Uxbridge!**

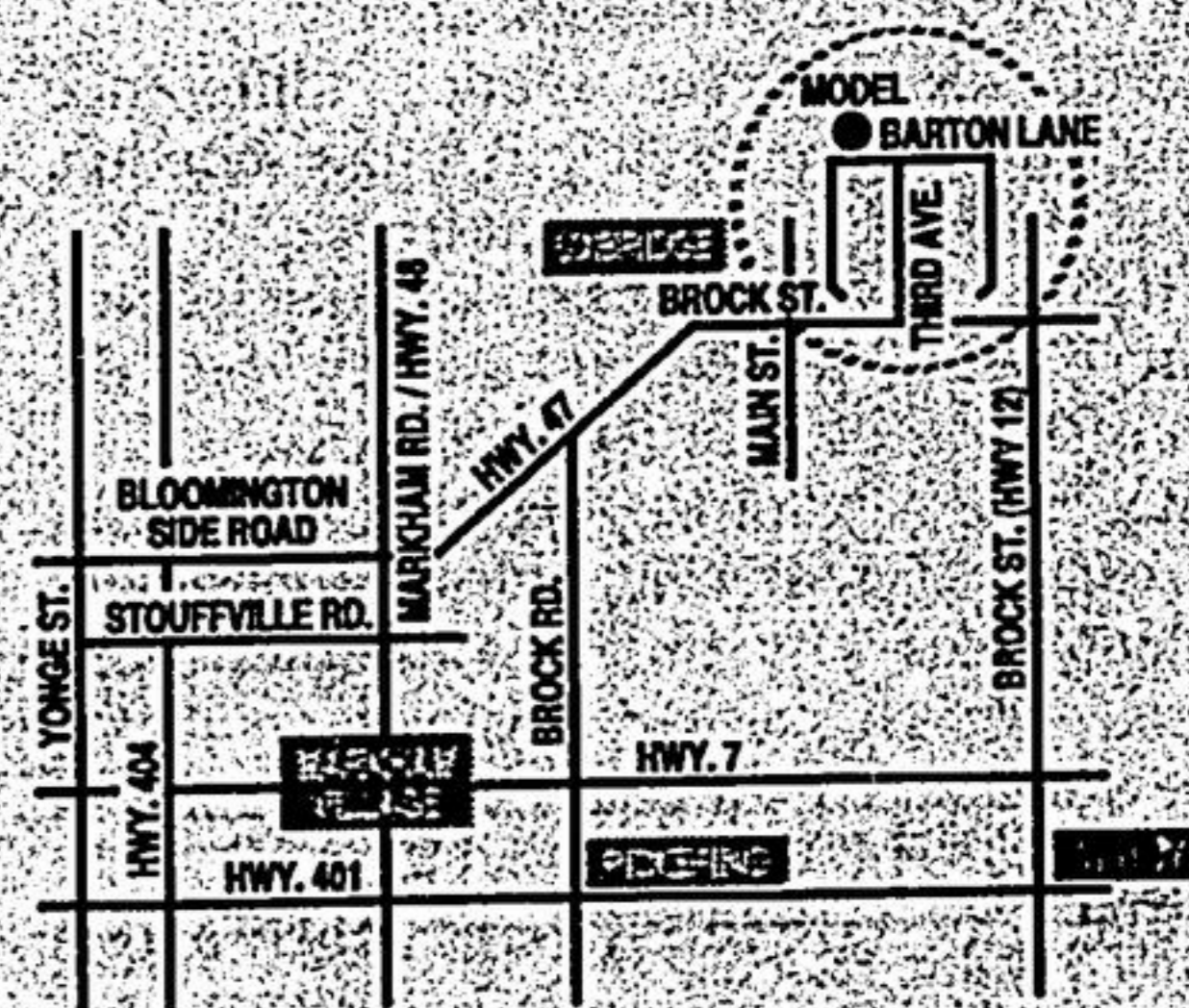


PHASE II

uxbridge's country estate community is back with great new designs & great new value!

New Stone & Brick Bungalow and 2-Storey Designs in an All-Brick Community

Visit Our
Model Home
and Ask About
Our Opening
Special Offer



Model Home & Sales Office
on Barton Lane at Third Ave.
North of Brock St.

30', 40', 50' & 60' lots

from **\$174,990**
up to 4006 sq. ft.

Mon. - Thurs.: 1 - 8 p.m. Friday: Closed Weekends & Hol.: 11 a.m. - 6 p.m. (905) 852-1913

OTHER FINE KAITLIN COMMUNITIES



Kingshill
Models Open
30' lots, 30, 40 & 50 designs from \$179,990 up to 3018 sq. ft.



PICKERING
Models Open
40' lots, Only 5 left.
1704 sq. ft. for \$249,990
Quick Closings



PICKERING
12 exclusive Townhomes by the forest from \$169,990



BOWMANVILLE
Models Open
Town, 30, 40 & 50 designs from \$129,990 up to 3018 sq. ft.



NEWCASTLE
Waterfront Model Homes Now Open
30', 38' & 45' lots from \$159,990 up to 2785 sq. ft.