

**0% FINANCING ON SELECT MODELS**  
SEE US FOR DETAILS

offers  
**The Right Vehicle At The Right Price!**

**0% FINANCING ON SELECT MODELS**  
SEE US FOR DETAILS



**2000 NEON**

CAR NOT EXACTLY AS SHOWN

22D pkg. Includes:  
2L, 132 engine, auto, 4 wheel independent suspension, air, tilt, cruise, full center console, AM/FM cass. w/4 in-dash CD and 6 speakers, dual air bags, 15" alum. wheels.

**BUY or LEASE FOR**

**\$299\*** PER MONTH

\*Purchase price \$2,500 down plus taxes; 60 months 0% Financing; 48 month Gold Key Lease, 25,200 km per year. Total out of pocket \$817.00.



**2000 CHRYSLER INTREPID**

22C pkg. Includes: 2.7L V6 engine, 4 speed, auto, air, p/w, p/l, p/mirrors, tilt, cruise, AM/FM cassette.

**PURCHASE PRICE**

**\$22,688\***

**OR LEASE FOR**

**\$439\*\*** PER MO.

\*Purchase price plus freight, registration, taxes, RDA to dealer. \*\*36 month Gold Key Lease, 20,400 km. per year. First security, registration & taxes extra.



**2000 DODGE CARAVAN**

CAR NOT EXACTLY AS SHOWN

26T pkg. Includes: 3L V6 engine, 4 spd. auto, keyless entry, tilt, cruise, p/w, p/l, p/m, p/rear quarter vents, air, 7 passenger, AM/FM cassette, sun screen glass.

**SALE PRICE \$21,888\***

**OR LEASE FOR**

**\$369\*\*** PER MONTH

\*Purchase price plus freight, registration, taxes, RDA to dealer. \*\*36 month Gold Key Lease, 20,400 km. per year. First security, registration & taxes extra.

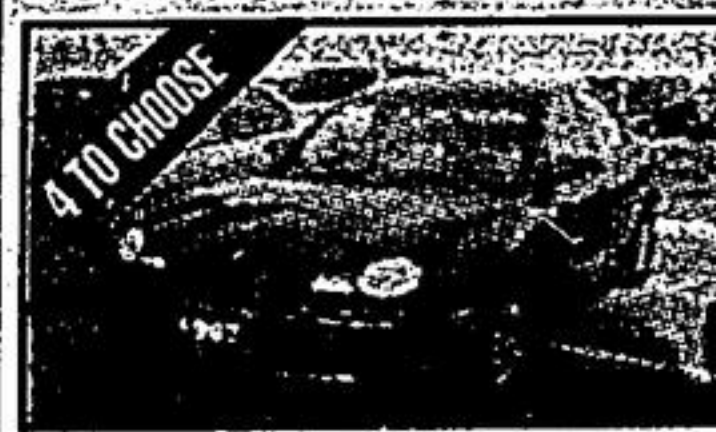


**\$750 GRAD. REBATE ON SELECT MODELS**  
SEE US FOR DETAILS

**OR OWN ONE OF THESE QUALITY PRE-OWNED VEHICLES ALL PRICED TO SELL**

**LOYALTY REBATES \$500 ON PURCHASE \$300 ON LEASE**  
SEE US FOR DETAILS

**1997 DODGE NEON HIGHLINE 4 DR.**



Auto, air, low km. Also a Sport 5 speed available at this price.

**\$9,888**

**1997 DODGE CARAVAN SE**



P/w, p/l, tilt & cruise, low kms. Silver in colour.

**\$16,999**

**1999 SEBRING CONVERTIBLE**



Fully equipped, p/w, p/l, tilt & cruise, p/seat, V6 engine. Only 17,000 kms.

**\$25,999**

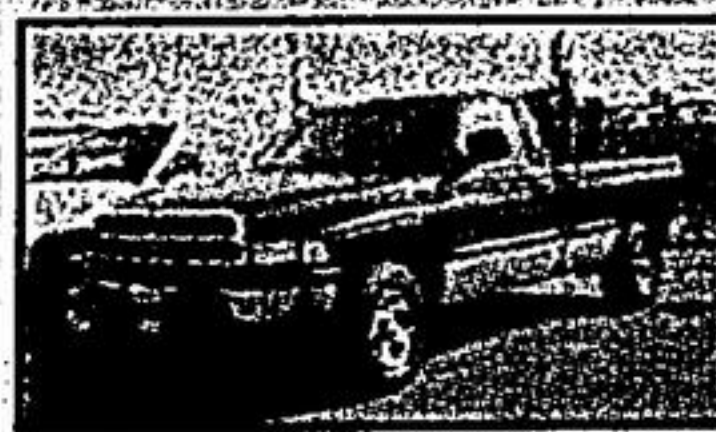
**1997 DODGE STRATUS**



24B package, power windows, locks, tilt, cruise. Only 48,000 kms.

**\$12,999**

**1999 RAM 1500 PICK UP**



V8, air, posy rear end & slider window. Only 197 kms.

**\$20,988**

**1997 DODGE 1500 REG. CAB**



8 ft. box, p/w, ST pkg., air, auto, cass., box liner, 35,000 kms. Stk. #UC-814

**\$16,888**

**2000 NEON LE**



Air, auto, tilt & cruise. Stk. #UC-796

**\$13,988**

**1999 PLYMOUTH BREEZE**



24B pkg., p/w, p/l, tilt & cruise, 26,000 kms.

**\$14,499**

**1996 JEEP GRAND CHEROKEE LTD**



4.0 litre, 6 cyl., loaded, leather. A must see, low kms.

**\$20,888**

**1999 CHRYSLER INTREPID**



Fully equipped, V6 air, power windows, locks, tilt & cruise. 25,000 kms. 36 mo. lease \$399

**\$17,988**

**1995 JEEP YJ**



Vc-807. Only 48,000 kms.

**\$13,888**

**1998 GRAND CARAVAN SE**



3.3 V6 engine, quad seating, p/w, p/l, tilt, cruise, 45,000 kms. 36 mo. lease \$429

**\$18,888**

Leases based on 36 months/20 km per year. \$1,000 down plus 1st security, registration and taxes.

**WOODBINE**  
PLYMOUTH CHRYSLER

8280 Woodbine Ave., Markham  
(south of Hwy. 7, west side)

905-415-2260

www.toronto.com/woodbinepc

