

WHEELS



1110 Finch Ave. W., Ste. 222
Toronto, Ontario M3J 2T2
Tel: (416) 661-CURE
(2873) Fax: 416-661-3840

Leukemia KNOWS NO BOUNDARIES. It can affect anyone, regardless of age, sex, or race. It infiltrates the body through white cells in the blood. It is considered a form of cancer and attacks the various blood forming tissues of the body such as the spleen, bone marrow and lymph nodes.

This message brought to you as a community service of The Economist/Tribune

Program helps women enter auto industry

Program seen as a model for four more pre-apprenticeship program sites to be launched in Southwest and Central Ontario.

The Ontario government will provide \$3.81 million to help women learn the skilled trades that can open up viable and rewarding careers in the auto industry to them.

The Women in Skilled Trades Initiative is designed to provide women with the opportunity to work in growth industries where skill shortages exist. The program will recruit women and train them for the pre-apprenticeship program in the automotive making business in Ontario over the next three years.

In addition, there will be complementary strategies to promote skilled trades as a desirable career path to women.

The initiative is a partnership between the government, the Automotive Parts Manufacturers' Association, Women in Trades and Technologies National Network, the Halton Industry Education Council, the Centre for Skills Development and Training and local employers.

The Centre for Skills Development and Training in Burlington has 20 women enrolled in pre-apprenticeships as general machinists and tool and die makers.

The 30-weeks of classroom training will be followed by 20 weeks of on-the-job training at participating auto parts makers.

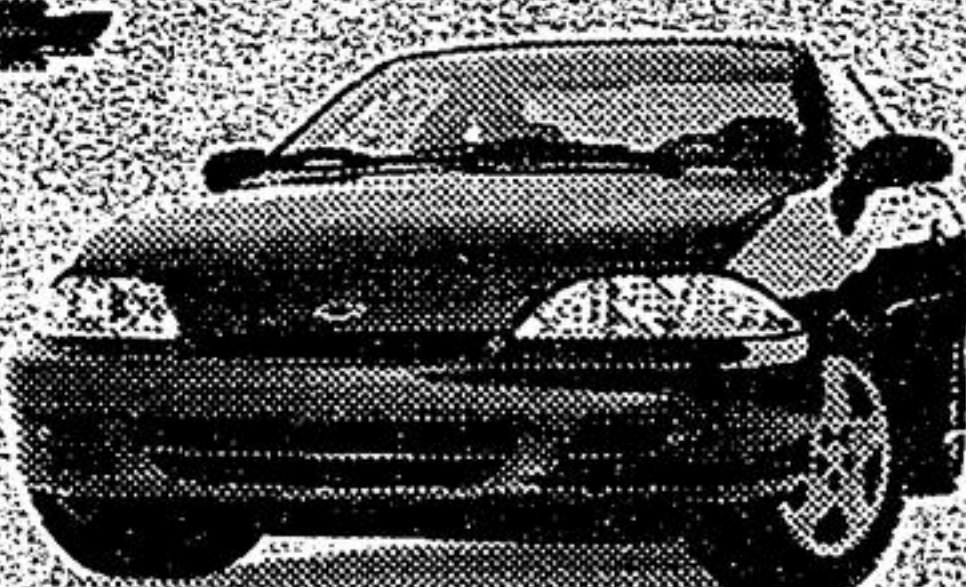
The program is seen as a model for four more pre-apprenticeship program sites to be launched in Southwest and Central Ontario.

"Pre-apprenticeship pilot programs will provide our industry with a stable, well-paid workforce of women working in their own communities," said Gerald Fedchun, president of the Automotive Parts Manufacturers' Association. "We fully support skills training for women and we are pleased to be part of this program."

Ready, Willing and Able.



Chevrolet Cavalier Coupe



CAVALIER COUPE 2000 VALUE PACKAGE
5-SPEED GETRAG TRANSMISSION • AM/FM STEREO WITH CD PLAYER • UPGRADED 15" WHEELS • 2.2 Litre 2200 L4 115 HP Engine • 4-Wheel Anti-Lock Braking System • Next Generation Driver and Front Passenger Air Bags • PASSLock® II Theft-Deterrent System • Full-Folding Rear Seat • Roadside Assistance • Tinted Glass • Rear Spoiler

2000 CAVALIER COUPE NO SURPRISE LEASE GUIDE	
MONTHLY PAYMENT (36 mos/60,000 km)	\$188
CASH DOWN (includes freight of \$710 and tax of \$188)	\$2,250
GAS TAX (36 mos/60,000 km)	\$75
PRE-DELIVERY INSPECTION	NO EXTRA CHARGE
PST/GST (incl. tax on Payment)	\$377
SECURITY DEPOSIT	\$300
TOTAL AMOUNT DUE ON DELIVERY	\$3,190

With \$0 down, monthly payment is \$233 (plus tax) - \$677 due on delivery.

SMARTLEASE \$188 OR **PURCHASE FINANCE 1.9%**
WITH 1.9% LEASE RATE UP TO 36 MONTHS.
UP TO 48 MONTHS.
CASH PURCHASE PRICE \$15,608
OR
INCLUDES FREIGHT OF \$710.
(Licence, Insurance and Taxes extra.)

Chevrolet Venture



FEATURES:
Venture has the Best Fuel Economy in its class* - 3.4 Litre 3400 185 HP V6 Engine • 4-Speed Automatic Transmission • 4-Wheel ABS • Next Generation Driver/Front Passenger Front and Side Air-Bags • Dual Sliding Doors with Child Security Door Locks • Power Door Locks • 7-Passenger Seat Configuration with Flip and Fold Seating • Air Conditioning

FIVE STAR SAFETY RATING
Chevy Venture is the first vehicle* ever to earn 5 stars (the top safety rating) for both driver and rear-seat passenger in side-impact testing**

2000 CHEVY VENTURE NO SURPRISE LEASE GUIDE	
MONTHLY PAYMENT (36 mos/60,000 km)	\$238
CASH DOWN (includes freight of \$915 and tax of \$188)	\$3,920
GAS TAX (36 mos/60,000 km)	NOT APPLICABLE
PRE-DELIVERY INSPECTION	NO EXTRA CHARGE
PST/GST (incl. tax on Payment)	\$624
SECURITY DEPOSIT	\$300
TOTAL AMOUNT DUE ON DELIVERY	\$5,082

With \$0 down, monthly payment is \$352 (plus tax) - \$830 due on delivery.

SMARTLEASE \$238 OR **PURCHASE FINANCE 1.9%**
PER MONTH/36 MONTHS.
UP TO 48 MONTHS.
CASH PURCHASE PRICE \$22,998
OR
INCLUDES FREIGHT OF \$915 AND AIR TAX OF \$100.
(Licence, Insurance and Taxes extra.)

Chevrolet Malibu



FEATURES:
3.1 Litre 170 HP V6 Engine • 4-Speed Automatic Transmission with Overdrive • 4-Wheel ABS • Next Generation Driver and Front Passenger Air Bags • PASSLock® II Theft-Deterrent System • AM/FM Stereo with CD Player • Tilt-Wheel™ Steering • Air Conditioning • 166,000 km Between Tune-ups

2000 CHEVROLET MALIBU NO SURPRISE LEASE GUIDE	
MONTHLY PAYMENT (36 mos/60,000 km)	\$268
CASH DOWN (includes freight of \$750 and tax of \$188)	\$3,500
GAS TAX (36 mos/60,000 km)	\$75
PRE-DELIVERY INSPECTION	NO EXTRA CHARGE
PST/GST (incl. tax on Payment)	\$576
SECURITY DEPOSIT	\$325
TOTAL AMOUNT DUE ON DELIVERY	\$4,744

With \$0 down, monthly payment is \$372 (plus tax) - \$964 due on delivery.

SMARTLEASE \$268 OR **PURCHASE FINANCE 2.9%**
PER MONTH/36 MONTHS.
UP TO 48 MONTHS.
PURCHASE PRICE \$22,588
INCLUDES FREIGHT OF \$750 AND AIR TAX OF \$100.
(Licence, Insurance and Taxes extra.)

Chevy Blazer 2-Door 4x4



FEATURES:
Vortec 4300 190 HP V6 Engine • 4-Speed Automatic Transmission • 4-Wheel Disc Brakes with ABS • Next Generation Driver and Front Passenger Air Bags • Off-Road Suspension Package • Locking Differential • Power Door Locks/Windows/Mirrors • Tilt-Wheel™ Steering • Cruise Control • Air Conditioning • AM/FM Stereo with CD Player

2000 CHEVY BLAZER 2-DOOR NO SURPRISE LEASE GUIDE	
MONTHLY PAYMENT (36 mos/60,000 km)	\$298
CASH DOWN (includes freight of \$750 and tax of \$188)	\$4,950
GAS TAX (36 mos/60,000 km)	\$400
PRE-DELIVERY INSPECTION	NO EXTRA CHARGE
PST/GST (incl. tax on Payment)	\$847
SECURITY DEPOSIT	\$350
TOTAL AMOUNT DUE ON DELIVERY	\$6,845

With \$0 down, monthly payment is \$443 (plus tax) - \$1,497 due on delivery.

SMARTLEASE \$298 OR **PURCHASE FINANCE 1.9%**
PER MONTH/36 MONTHS.
UP TO 48 MONTHS.
CASH PURCHASE PRICE \$29,858
OR
INCLUDES FREIGHT OF \$785 AND AIR TAX OF \$100.
(Licence, Insurance and Taxes extra.)

Oldsmobile Alero GL Sedan



FEATURES:
2.4 Litre 150 HP Twin Cam Engine • 4-Speed Automatic Transmission • Enhanced Traction System • 4-Wheel Disc Brakes with ABS • Next Generation Driver and Front Passenger Air Bags • PASSLock® II Theft-Deterrent System • Power Windows/Door Locks • Remote Keyless Entry • AM/FM Stereo with CD Player • Air Conditioning

2000 ALERO GL SEDAN NO SURPRISE LEASE GUIDE	
MONTHLY PAYMENT (36 mos/60,000 km)	\$278
CASH DOWN (includes freight of \$750 and tax of \$188)	\$3,500
GAS TAX (36 mos/60,000 km)	\$75
PRE-DELIVERY INSPECTION	NO EXTRA CHARGE
PST/GST (incl. tax on Payment)	\$578
SECURITY DEPOSIT	\$325
TOTAL AMOUNT DUE ON DELIVERY	\$4,725

With \$0 down, monthly payment is \$372 (plus tax) - \$964 due on delivery.

SMARTLEASE \$278 OR **PURCHASE FINANCE 2.9%**
PER MONTH/36 MONTHS.
UP TO 48 MONTHS.
PURCHASE PRICE \$23,508
INCLUDES FREIGHT OF \$750 AND AIR TAX OF \$100.
(Licence, Insurance and Taxes extra.)

Chevy Silverado Regular Cab



FEATURES:
Vortec 4300 200 HP V6 Engine • 4-Speed Automatic Transmission with Overdrive and Tow/Haul Mode • 4-Wheel Disc Brakes with ABS • Full Instrumentation including: Tachometer, Engine Hour Meter and Driver Message Centre • 40/20/40 Split Front Seat with Custom Cloth Trim • Air Conditioning with Interior Filtration System • Tilt-Wheel™ Steering

2000 CHEVY SILVERADO V6 REG. CAB NO SURPRISE LEASE GUIDE	
MONTHLY PAYMENT (36 mos/60,000 km)	\$288
CASH DOWN (includes freight of \$880 and tax of \$188)	\$3,250
GAS TAX (36 mos/60,000 km)	NOT APPLICABLE
PRE-DELIVERY INSPECTION	NO EXTRA CHARGE
PST/GST (incl. tax on Payment)	\$531
SECURITY DEPOSIT	\$350
TOTAL AMOUNT DUE ON DELIVERY	\$4,419

With \$0 down, monthly payment is \$387 (plus tax) - \$893 due on delivery.

"2000 CARGUIDE BEST BUY AWARD"
SMARTLEASE \$288 OR **PURCHASE FINANCE 2.9%**
PER MONTH/36 MONTHS.
UP TO 48 MONTHS.
CASH PURCHASE PRICE \$23,578
OR
INCLUDES FREIGHT OF \$960 AND AIR TAX OF \$100.
(Licence, Insurance and Taxes extra.)

OUR PRICES INCLUDE FREIGHT, AIR TAX AND P.D.I.

For a limited time at your local Chevrolet • Oldsmobile dealers.



We'd like you to know more. Come visit us at your local dealer, on our website at www.gmcanada.com or call us at 1-800-GM-DRIVE. All leases have annual kilometre limit of 20,000 km, \$0.12 per excess kilometre, PST, GST, licence and insurance extra. All leases have an annual cost of borrowing of 1.9%/4.4%/4.4%/2.9%/4.4%/6.4% per annum for Cavalier Coupe R7Z/Malibu R7Z/Alero GL Sedan R7Z/Venture R7Z/Blazer 2-Door R7Z/Silverado Reg. Cab R7Z. Option to purchase at lease end is \$8,218/\$11,439/\$12,091/\$13,473/\$19,206/\$14,968 (Cavalier Coupe R7Z/Malibu R7Z/Alero GL Sedan R7Z/Venture R7Z/Blazer 2-Door R7Z/Silverado Reg. Cab R7Z) plus applicable taxes. Other lease options available. Financing on approved GMAC credit only. Example: \$10,000 at 1.9%/2.9% APR, the monthly payment is \$216.52/\$220.90 for 48 months. Cost of borrowing is \$392.96/\$603.20. Total obligation is \$10,392.96/\$10,603.20. Down payment and/or trade may be required. Monthly payment and cost of borrowing will vary depending on amount borrowed and down payment/trade. The SMARTLEASE monthly payment and the GMAC purchase finance rate are not available with and are not calculated on the "Cash Purchase" price as shown. The difference between the price for the SMARTLEASE/GMAC Purchase Finance offer and the "Cash Purchase" offer is deemed under provincial disclosure laws to be a cost of borrowing, whether or not the same represents actual interest and is required to be expressed as an annual percentage rate of 4.57%/4.77%/4.85%/5.67% (Cavalier Coupe R7Z/Venture R7Z/Blazer 2-Door R7Z/Silverado Reg. Cab R7Z). Offers apply as indicated to new 2000 models of Cavalier Coupe R7Z/Malibu R7Z/Alero GL Sedan R7Z/Venture R7Z/Blazer 2-Door R7Z/Silverado Reg. Cab R7Z equipped as described. Offers apply to qualified retail customers in the Ontario Chevrolet Oldsmobile Dealer Marketing Association area only (excluding Northwestern Ontario). Dealer order or trade may be necessary. Limited time offer which may not be combined with other offers. Dealers are free to set individual prices. See your dealer for conditions or details. *Car or light truck. **Testing conducted by the National Highway Traffic Safety Administration (NHTSA). †Published by Natural Resources Canada, Fuel Economy Guide, 2000, Pickup Category.



WHY LEASE WHEN YOU CAN OWN

0% FINANCING UP TO 48 MONTHS O.A.C.

99 LANOS AUTO 4 DOOR S
Power steering, power brakes, AM/FM cass, tinted glass, dual air bags, floor mats, mud flaps, 60/40 split rear seats, Dual folding mirrors. High adjustable drivers seat.
5 year/100,000 km warranty and good looks.

\$248 NOT A LEASE PRICE PER MONTH WITH \$1500 DOWN (Based on 60 mos. OAC.)

ALL TAXES FREIGHT AND PDI INCLUDED

DAEWOO RICHMOND HILL
11635 Yonge Street
Richmond Hill, ON L4B 1Z7
905-889-8899 • 1-800-961-3862