

WHEELS

New model premieres at this year's Auto Show

CONT.

up to 1,600 kilograms (3500 lbs.), as well as standard traction control. Later in the year, an innovative "VersaTrak" all-wheel-drive system will be available for added traction and increased stability.

OLDSMOBILE AURORA

With a tighter body and suspension system, the new Aurora is designed to deliver inspiring responsiveness to compete with the best of its competitors. True to its stylish heritage, the 2001 Aurora's lines are sleek, clean and sophisticated. With a smaller body and reduced weight, Aurora handles with agility and confidence. And although the Aurora is 152 millimetres (6") shorter, it has increased interior space with greater shoulder, hip and head room. To help broaden appeal, the redesigned luxury sedan will be offered in two versions - one with the existing 4.0 litre V8 engine, and the other with the new 3.5 litre double-overhead cam V6.

SUZUKI XL6 GRAND VITARA

Carving out a unique product niche once more, Suzuki of Canada unveils its new concept vehicle, the XL6, at the Canadian International AutoShow. Extending its tradition of creating vehicles designed to fit consumers' evolving lifestyles, Suzuki introduces the sport utility vehicle that can do it all: haul the kids, gear and groceries - on or off-road - in affordable elegance. Designed specifically for the North American market, this latest, largest and most luxurious Suzuki concept vehicle demonstrates an unsurpassed combination of versatility and style. With leather seating for six and an abundance of versatile storage space, the XL6 combines a lavish cabin, sleek exterior and a rugged four-wheel drive powertrain.

FORD ESCAPE

Nimble and maneuverable - with unibody construction and go-anywhere, four-wheel-drive to meet the challenge of the Canadian outdoors - the all-new 2001 Ford Escape is a small, tough SUV that's versatile enough for the most active lifestyles. Escape pro-



vides refined ride and handling, excellent fuel economy and low emissions - all wrapped in an assertive, no-nonsense design package. Equipped with the 2.0L 4-cylinder engine and 5-speed manual transmission, Escape will also be available in front wheel drive (FWD) and 4-wheel drive (4WD) configurations. Smaller than the popular Ford Explorer, the new Escape is designed to appeal to the young and the young-at-heart - people who want fun, agile, sporty, durable and affordable transportation for their active lifestyles.

Subaru wins two awards

The 2000 Subaru Legacy Outback has won two major media endorsements.

It was named Best Station Wagon by TSN's Motoring 2000 TV show and the Editors' Choice for Best Station Wagon by World of Wheels Magazine.

The Motoring award saw the Subaru outpace Ford Focus and Hyundai Elantra.

"We're delighted to receive this vote of approval from Motoring 2000," said Subaru vice-president sales and marketing, Joe Anwyll.

The World of Wheels awards saw the

Outback better the Saturn LW, the BMW 5-Series Touring Wagon, and the Mercedes-Benz E-Class.

Saying the Outback had "defined the segment", the editors praised the Outback's list of standard features, ergonomics, competitive pricing, boxer-style engine, and full-time all-wheel drive.

The 2000 Legacy and Outback are currently enjoying unprecedented success. Sales in 1999 totaled 13,018 units, a new record.

To advertise in Car Care Directory call

ZEPURE

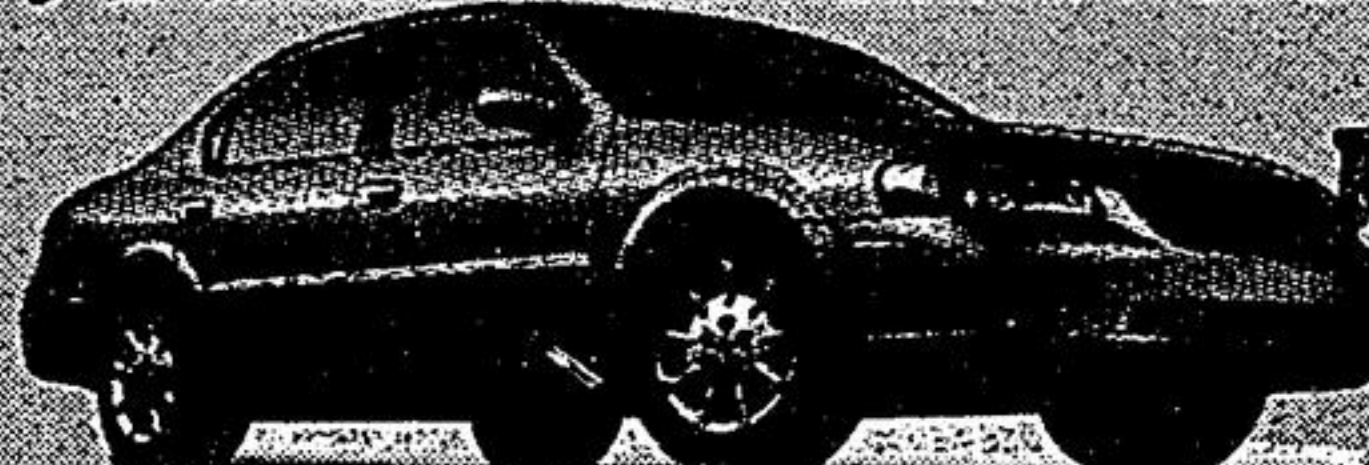
905-294-2200

ext. 3345

M.A.R.K.H.E.A.M. ECONOMIST & SUN

ROLE MODELS FOR THE NEW MILLENNIUM

AAC "Best New Family Car" (more than \$25,000)
AUTOMOBILE JOURNALISTS ASSOCIATION OF CANADA



2000
MAXIMA
GXE

\$398 /mo. Lease for 48 months
Only \$3,000 down

• 222 HP, 3.0 litre V6 engine • Automatic transmission • 6 speaker 120 watt premium AM/FM/CD with cassette audio system • Automatic climate-control air conditioning • Anti-theft system • Remote keyless entry with vehicle immobilizer system and more...

"Best Entry Midsize Car in Initial quality in the U.S. 3 out of the last 4 years." - J.D. Power and Associates

2000
ALTIMA
GXE



Specially priced at **\$21,998**
until February 29

• 155 HP 2.4 litre engine • 100 watt AM/FM/CD audio system • 4 speed automatic transmission • Air conditioning • Remote keyless entry system with panic alarm • Dual airbags • Power windows, mirrors, door locks, trunk release, and more...

AAC "2000 Canadian Truck of the Year"
AUTOMOBILE JOURNALISTS ASSOCIATION OF CANADA



2000
XTERRA

Starting at **\$28,998**

• 170 HP 3.3 litre V6 engine • 6 speaker 100 watt AM/FM/CD audio system • Power windows, door locks, and mirrors • Industrial-strength aluminum roof rack • Stadium-style seating • Engine block heater • Air conditioning, cruise control, and more...

"Canada's #1 selling Import V6 compact SUV 7 years running."***

2000
PATHFINDER
XE



\$369 /mo. Lease for 48 months
Only \$4,000 down

• 170 HP 3.3 litre V6 engine • 4 speed automatic transmission • 6-speaker 100 watt AM/FM/CD audio system with cassette • Air conditioning • 16" alloy wheels • Remote keyless entry system • Power windows, door locks, power heated mirrors, and more...

FINANCING RATES AS LOW AS

2.8%

AVAILABLE

Readers Choice Award 1999



VILLAGE NISSAN

4600 Hwy. #7, Markham

www.villagenissan.com (905) 477-3337



Smart people always read the fine print! And they always wear their seatbelts. Limited time offers on 2000 Altima GXE (U4RG70 AE00) (model shown with optional alloy wheels), 2000 Maxima GXE (U4RG70 CK00) 48 month lease 7.8% A.L.R., down payment or equivalent trade of \$3000, 2000 Pathfinder XE (5CLG70 AE00) 48 month lease 8.78% A.L.R., down payment or equivalent trade of \$4000 and 2000 Xterra XE (Maxima and Pathfinder leases based on maximum of 96,000 km, with excess km charged at \$0.08/km). All offers are OAC and exclude destination & delivery (\$968/\$972), license, insurance and taxes. 12.8% financing available on the Altima and Pathfinder for terms up to 36 mos. The Nissan Altima was the highest ranked Entry Midsize Car in J.D. Power and Associates' 1998-97 and 1999 U.S. *Based on CompuSearch data January to August 1999. DRIVEN and the Nissan logo are Nissan trademarks.

NEW SERVICE HOURS

Mon. - Thurs: 7-9 pm, Fri: 7-5:30 pm, Sat: 8-3 pm