

# Trash contract worth \$250 million over 25 years

From page 1

waste at a facility. SUBBOR president Gregory Vogt expressed dismay that his firm will not advance to the region's short-list of candidates, blaming the disqualification on a lack of knowledge surrounding a process in which the company has invested \$5 million.

"We offer our SUBBOR technique as a square peg in a round hole. We are not really disposal or recovery, we are 100-per-cent diversion," said Vogt, noting federal government officials and residents at town hall meetings across the

GTA have reacted positively to the process.

"We deal with the entire problem. We couldn't meet some of the requirements. You asked what we do with what we have left, but there isn't anything left over. We are prepared to build a facility here and it would mean dollars for your community."

Rail Cycle North Ltd., which planned to haul the garbage by train to the abandoned Adams Mine in Kirkland Lake, was also disqualified because it can only handle York's trash if it wins a contract to handle Toronto's trash.

That leaves York Region to ponder

the merits of three companies — American Ref-Fuel Co., Republic Services Inc. and the Essex-Windsor Solid Waste Authority — to bid on a contract that could be worth as much as \$250 million over 20 years.

American Ref-Fuel has an incineration operation in Niagara Falls, N.Y., while Republic would take the garbage to a Michigan landfill site. Essex-Windsor has a site in Essex County, but can only handle 100,000 tonnes of the region's annual waste.

Markham Regional Councillor Gord Landon admits the American firms are risky, especially because of poor contin-

gency plans, lofty U.S. exchange rates and the political risk of the U.S. closing its borders to Canadian trash.

But he hopes a Canadian solution may arrive in March, after Toronto recommends a shared waste solution venture that allows other GTA municipalities to join as partners.

"We should do our work with the three bidders and come up with the price. But we are not obligated to accept those prices," said Landon, solid waste committee chairperson. "If there is a real discrepancy in the prices between the U.S. and Canada, we have to take the risk and go to the States."

"But, if they are equal, I would like to see a Canadian solution on the table, and Rail Cycle North would be the only viable solution. We have gone through a lot of work here to get to this conclusion, and I am not too satisfied with what has come out."

"We can go down and look at the SUBBOR operation and monitor it. We can have a short-term contract that can be converted over to a new facility."

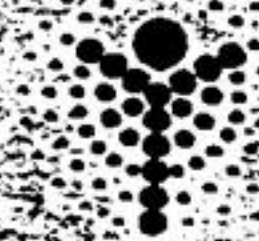
However, Georgina Mayor Rob Grossi said nearly three years of research proves the waste committee has not adapted to evolving technologies.

And Vaughan Mayor Lorna Jackson, whose residents are anxious to see the closure of Keele Valley, slammed the committee for refusing to allow SUBBOR back into the bidding process, especially after Toronto councillors overruled a similar recommendation last week and got the Rail Cycle North proposal back on track.

"The tried and true solution of disposing of garbage goes back to the cavemen when they dug a hole and buried it," fumed Jackson. "These solutions we have are just going back to the cavemen days."

"If what is restricting us from advancing into the 21st century is a waste management study from 2-1/2 years ago, then we should change the study. If we can get 100-per-cent diversion from SUBBOR, we should be going after that and not sidetracking it. It should be right up front. This may be our solution because the other ones don't appear to be."

With Osteoporosis a fractured hip could be a life sentence.



Osteoporosis Society of Canada

Call 1-800-463-6842 for more information.

This message brought to you as a community service of The Economist & Sun/Tribune

# ROLE MODELS FOR THE NEW MILLENNIUM

**RAC** "Best New Family Car" (more than \$25,000)  
AUTOMOBILE JOURNALISTS ASSOCIATION OF CANADA



2000  
**MAXIMA  
GXE**

**\$398** /mo. Lease for 48 months  
Only \$3,000 down

• 222 HP, 3.0 litre V6 engine • Automatic transmission • 6 speaker 120 watt premium AM/FM/CD with cassette audio system • Automatic climate-control air conditioning • Anti-theft system • Remote keyless entry with vehicle immobilizer system and more...

"Best Entry Midsize Car in Initial quality in the U.S. 3 out of the last 4 years." - J.D. Power and Associates



2000  
**ALTIMA  
GXE**

Specially priced at **\$21,998**  
until February 29

• 155 HP 2.4 litre engine • 100 watt AM/FM/CD audio system • 4 speed automatic transmission • Air conditioning • Remote keyless entry system with panic alarm • Dual airbags • Power windows, mirrors, door locks, trunk release, and more...

**RAC** "2000 Canadian Truck of the Year"  
AUTOMOBILE JOURNALISTS ASSOCIATION OF CANADA



2000  
**X TERRA**

Starting at **\$28,998**

• 170 HP 3.3 litre V6 engine • 6 speaker 100 watt AM/FM/CD audio system • Power windows, door locks, and mirrors • Industrial-strength aluminum roof rack • Stadium-style seating • Engine block heater • Air conditioning, cruise control, and more...

"Canada's #1 selling Import V6 compact SUV 7 years running." \*\*



2000  
**PATHFINDER  
XE**

**\$369** /mo. Lease for 48 months  
Only \$4,000 down

• 170 HP 3.3 litre V6 engine • 4 speed automatic transmission • 6-speaker 100 watt AM/FM/CD audio system with cassette • Air conditioning • 16" alloy wheels • Remote keyless entry system • Power windows, door locks, power heated mirrors, and more...

FINANCING RATES AS LOW AS

# 2.8%

AVAILABLE

Readers Choice Award 1999



Smart people always read the fine print. And they always wear their seatbelts. Limited time offers on 2000 Altima GXE (T4RG70 AE00) (model shown with optional alloy wheels), 2000 Maxima GXE (U4RG70 CK00) 48 month lease 7.8% A.P.R., down payment or equivalent trade of \$3000, 2000 Pathfinder XE (5CLG70 AE00) 48 month lease 6.79% A.P.R., down payment or equivalent trade of \$4000 and 2000 Xterra XE (Maxima and Pathfinder leases based on maximum of 96,000 km, with excess km's charged at \$0.08/km. All offers are OAC and exclude destination & delivery (\$966/\$972), license, insurance and taxes. †2.8% financing available on the Altima and Pathfinder for terms up to 36 months. \*\*The Nissan Altima was the highest ranked Entry Midsize Car in J.D. Power and Associates' 1999-07 and 1999 U.S. Based on CompuSearch data, January to August 1999. DRIVEN and the Nissan logo are Nissan trademarks.

DRIVEN NEW SERVICE HOURS

## VILLAGE NISSAN

4600 Hwy. #7, Markham  
www.villagenissan.com (905) 477-3337



Mon. - Thurs. 7-9 pm, Fri. 7-5:30 pm, Sat. 8-3 pm

**SHERIDAN**  
HEATING & AIR CONDITIONING  
Call 471-4222  
Furnaces From \$29.95

**THE ZONE DIET**  
Burn fat, increase muscle, lower cholesterol level, control blood sugar, increase energy levels  
Introductory seminar  
Feb. 15th, St. Andrews United  
Markham Main Street  
Tues. 8:00 p.m.  
Call (905) 294-6810

10 days \$1795 twin  
**Newfoundland**  
June 23, July 3, 5, 14, 21, 28,  
August 4, 8, 14, 25  
DeNure Tours  
1-800-668-6859