

# Former regional chairperson favours one city

From page 1

south. But he argues urban Aurora and Newmarket don't have the industrial and commercial development to support services for the six northern municipalities.

That would mean a steep increase in residential taxes, a substantial decrease in services or a determined effort to attract even more development to northern York municipalities.

King said the disparity between the north and south was the reason the region was established by the province in 1971 — to share the wealth.

"The north does not have sufficient industrial/commercial assessment to pay the bills."

But before southern residents start complaining that they're subsidizing the north — as Vaughan Councillor Bernie DiVona did last week — King points out northern taxpayers helped pay for the roads, water and sewer pipes and other infrastructure that allowed the south to grow and attract industry.

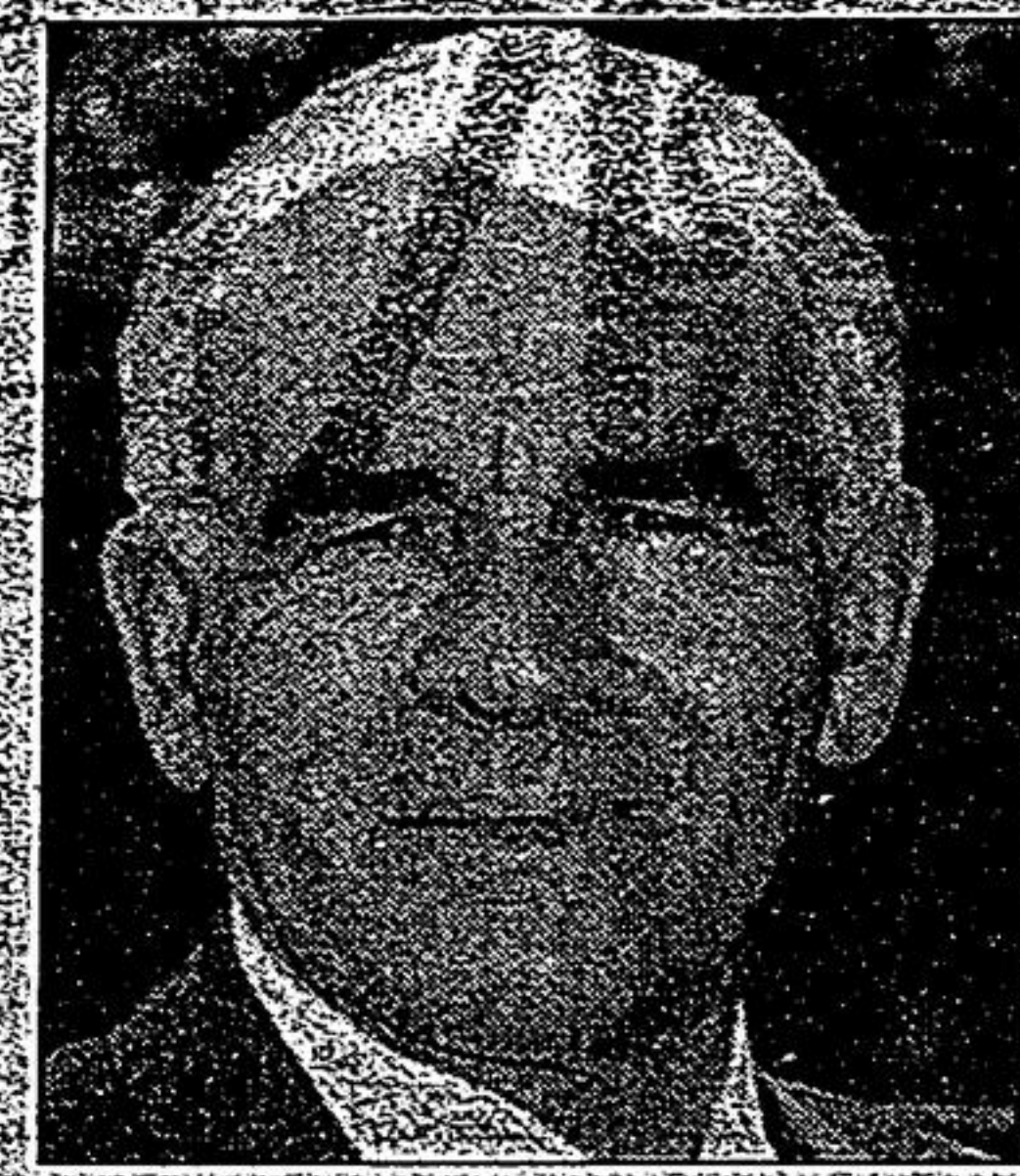
If the status quo is abandoned, King argues the only equitable change is to create one York city.

Any other model concentrates the wealth in one or two areas at the expense

## SURVEY RESULTS

Here are the town-by-town results of the reader survey on amalgamation co-ordinated by the York Region group of Metroland community newspapers. The chart shows the number of surveys returned in each town, followed by the percentage of responses favouring each option. Option A would see the towns remain unchanged but regional government phased out, Option B would see local and regional governments merged into three cities, Option C would turn York into one city, Option D into two cities. Other means the reader offered their own option.

Town name	Tot. #	Status quo	Option A	Option B	Option C	Option D	Other
Whitchurch-Stouffville	29	13	3	17	31	27	6
Newmarket	105	5	10	9	14	43	16
Aurora	60	15	11	13	15	23	21
East Gwillimbury	48	22	2	10	22	20	20
King Township	19	52	0	0	10	21	15
Georgina	29	31	6	6	5	15	31
Richmond Hill	103	19	7	3	23	38	6
Vaughan	70	17	8	4	11	44	8
Markham	92	17	5	10	17	37	13
All responses	555	16	7	8	18	33	14



**ELDRÉD KING:** Former York Region chairperson says northern residents have contributed to growth in the southern towns.

police, public health, social services, regional roads, water and sewers.

While Markham Mayor Don Cousens hasn't worked out the financial analysis, the survey has convinced him to abandon his idea of three municipalities in favour of two cities.

He argues there are too many differences between Sutton and Unionville, for example, to have all York communities brought into one city.

Cousens urged politicians to pay attention to the results of the survey, even though it wasn't a scientific poll and comparably few Markham and Whitchurch-Stouffville residents responded.

After people have a chance to digest the results, Cousens said politicians should launch a study looking at the implications of creating either one or two cities in York.

But Whitchurch-Stouffville Mayor Wayne Emmerson dismissed the survey, arguing generally only residents with an axe to grind in his town responded.

While it's easy to advocate shifting boundaries on a map, he doesn't think anyone understands the financial and social implications of amalgamation. "I don't believe amalgamation will save us any money. I think it will cost the Town of Whitchurch-Stouffville more. I don't think we'll get better services."

If push came to shove, Emmerson supports one York mega-city.

## CORRECTION

A story in the Nov. 13 edition incorrectly identified a person in a photo. The name of the student council leader from Unionville High School is Grant Holohan.

Also, the number of students from Unionville High taking part in the protest over portables was more than 1,000.

We apologize for the errors.

## FUTURE SHOP

### CORRECTION NOTICE

In our November 17-30, 1999 flyer, the following error occurred:

The Sony 12 Pack VHS Tapes advertised on page 14 for \$12.99 should have read \$19.99.

We sincerely apologize for any inconvenience this may have caused our valued customers.

BREAST HEALTH  
EVERY WOMAN'S RIGHT...  
EVERYONE'S RESPONSIBILITY



For more information, contact your local Canadian Cancer Society office.

It could save your life!

This message brought to you as a community service of The Economist/Tribune

## M & H Fish Market SUPER SPECIALS

MANY MORE IN-STORE SPECIALS  
A special thank you to our valued customers who continued to support us during the fire renovations.  
Sincerely, Mike & Helen

**FRESH SWORD FISH STEAKS**  
\$9.99 LB.

**FRESH SALMON TROUT FILLETS**  
\$5.99 LB.

**FRESH LOBSTERS**  
OFFER ENDS SAT. NOV. 20  
\$9.99 LB.

**479-3571**  
5051 HIGHWAY #7 - STORE #9 MARKHAM  
Across from Markville Shopping Centre

## Want to start your new career this January?

Let's get technical!

- Computer Programmer (416) 415-4598
- Tool & Die (Mechanical Technician) (416) 415-4028
- Heating, Refrigeration, and Air Conditioning Technician (416) 415-4028

- Microelectronics Engineering Technology - Surface Mount (3 yrs.) (416) 415-4834
- Microelectronics Manufacturing Techniques - Surface Mount (1 yr.) (416) 415-4834
- Electronics Engineering Technology (416) 415-4028

**3 EASY WAYS TO GET INFO/APPLY**

- Call Us Now at (416) 415-2000 or long distance 1-800-265-2002
- Visit Our Registration Centre (Casa Loma Campus, 160 Kendal Avenue from 9 a.m. to 4 p.m., Monday to Friday)
- Get more info online at [www.gbrownc.on.ca](http://www.gbrownc.on.ca) or apply online at [www.ocas.on.ca](http://www.ocas.on.ca)

**THE CITY COLLEGE GEORGE BROWN**  
Making The Future Work For You.

**BREADED CHICKEN BREASTS**  
Original • Spicy • Crispy  
Fully cooked, whole chicken breast in a light restaurant style breading. Just heat and enjoy on a bun or try on a delicious entrée with tomato sauce and pasta.

**9.99** 707 g / 2 lb / 5 pieces **SAVE \$4**

**CHICKEN WINGS**  
Fully prepared, breaded, baked, and tossed in a delicious sauce.

**8.99** 1/2 lb

**BEEF OR TURKEY WELLINGTON**  
Fully prepared, oven ready.

**3.99** 1 piece

**SUPREME HOMESTYLE LASAGNA**  
Fully prepared, oven ready.

**12.99** 12 pieces

**THIS WEEK ONLY**  
Prices in effect until Saturday, November 27/99

**MARKHAM**  
2225 Markham Rd. (at Hwy 7)  
**472-2028**

**UNIONVILLE**  
2241 Hwy. 7  
**474-1891**

**STOUFFVILLE**  
1212 Main Street  
**642-9334**