

THE KIDNEY FOUNDATION OF CANADA

We're out to make kidney disease obsolete

Give the greatest gift... The gift of life

This message brought to you as a community service of The Economist/Tribune



Drive Into A Great Pre-Owned Deal at McArthur Ford

KENNEDY RD. JUST SOUTH OF HWY. #7

474-1350



Dine at
The School



MARKHAM'S FINEST DINING
WHEN YOU PURCHASE
ANY ONE
OF OUR QUALITY
PRE-OWNED
VEHICLES

PLUS
SATISFACTION GUARANTEED
3 DAY/350 KMS.
REFUND AVAILABLE
5 DAY/500 KMS
EXCHANGE
AVAILABLE

WE GUARANTEE
YOU WON'T BE DISAPPOINTED

1999 MUSTANG COUPE

Only 21,000 km, electric red with auto, air & all the toys. Save thousands compared to new. #P1595

\$21,495

BUY OR LEASE - FINANCING AVAILABLE

1999 TAURUS SE 4DR.

Choose from two-one dark blue, one white - V6, air, auto, p/group, tilt, cruise, p/seat & more. Low, low kms. #P1630/#P1650

\$18,495

1998 MYSTIQUE 4DR.

Don't miss this one, 2.0 L Zetec, auto, air and only 29,000 kms. Finished in arctic white with grey cloth. #P1403

\$12,895

1998 SABLE GS 4DR.

Choose from three!! V6, air, auto, power group, tilt & cruise, power seat & more. Mileage in the low '30s. #P1526/P1529

\$15,995

1998 LINCOLN TOWN CAR

A real beauty-fully equipped, full size rear drive luxury. Medium charcoal green with grey leather, & only 27,000 kms. #P1645

\$32,995

1997 ESCORT LX

5 to choose from-4 door & wagons, auto or 5 spd. We have the best selection around. Must see-all mileage below 40,000 kms!!!

From \$10,995

1997 MUSTANG GT

A real beauty-black on black leather, auto, all power toys & even a CD player. Used but not abused-only 49,000 kms. #P1626

\$19,895

1994 ESCORT LX 5DR.

A one owner trade-in. Auto, air, alloy wheels, spoiler & more. Arctic white with grey cloth. #99025A

\$6,895

TRUCKS

1999 EXPLORER LTD.

A one owner trade-in. Must be seen, white opalescent with dark graphite leather, moonroof, memory profile system, Mach audio with CD & much more. Only 19,500 kms. #P1565

\$36,995

1998 WINDSTAR GLs

Choose from 4-200 HP 3.8L SPI V6, auto, air, p/group. Some quad seats, some bench. Silver, green, burgundy. Must be seen-low kms. #P1618/P1622/P1623/P1550

YOUR CHOICE \$20,695

1997 VILLAGER GS

Off lease vehicle. Fin. in electric red w/grey cloth, quad buckets, rear air, all power toys, dark tint glass, alloy rims & much more. Only 31,000 kms. Don't miss this one. #P1638

\$19,695

1995 VILLAGER GS

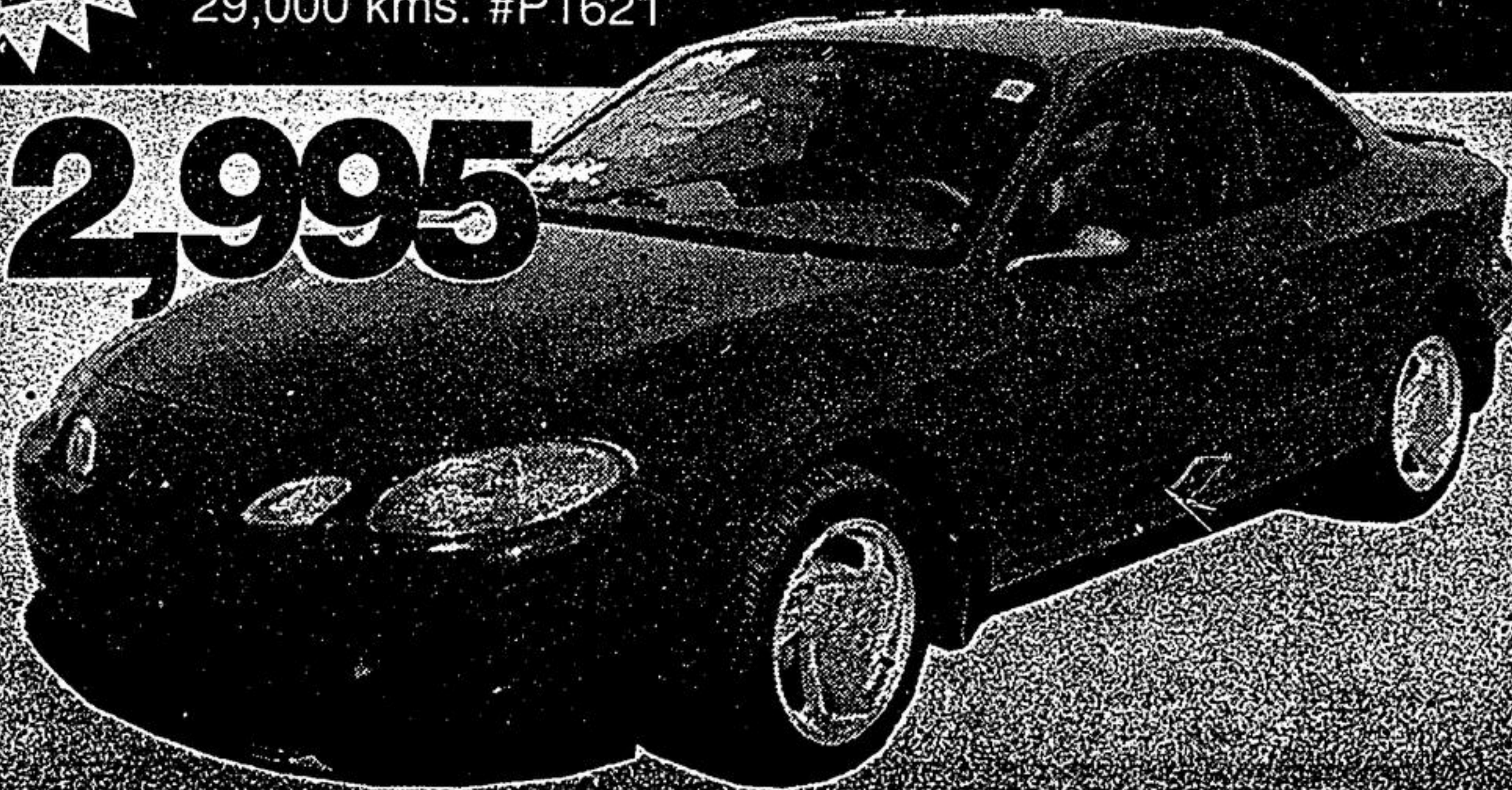
We just got this one-owner trade. Champagne with matching cloth, 7 passenger, air, p/group, tilt & cruise, cass. A very popular vehicle - Hurry in. #P1663

\$13,995

1998 ZX-2 SPORT

Fully equipped with 130 HP 2.0L Zetec, 5 speed, air, tilt & cruise, power group, AM/FM/cassette with CD changer, alloy wheels and spoiler. Red with grey sport seats and only 29,000 kms. #P1621

FEATURE OF THE WEEK
\$12,995



The 4Runner offers real off-road ability.

Experience a feeling of snug solidity with the 4Runner

FROM PAGE 24.

You can't review a sport utility vehicle without mentioning utility. The rear cargo space can accommodate 44.6 cu. ft. of luggage, expanding to 79.8 cu. ft. with the 50/50 rear bench folded down. For '99, the rear seat headrests can now be stored more conveniently in the bottom of the flip-forward seat cushion.

Low lift-over height, the power window in the one-piece tailgate and a peek-a-boo-proof tonneau cover also compliments a very accessible cargo area.

The Toyota 4Runner comes in three models — the SR5, SR5 V6 and limited-I was testing a middle-of-the-road V6 version but, in keeping with Toyota tradition, even the base SR5 comes loaded with standards such as auxiliary rear heater, digital clock, tachometer, dual foldable mirrors, tilt steering, console and rear storage compartment, power tailgate window and intermittent rear window wiper/washer. Under the hood of the entry-level model, a 2.7L DOHC four-cylinder engine powers the 4Runner-SR5 to the tune of 150 horsepower at 4,800 rpm and 177 lb-ft of torque at 4,000 rpm via a standard five-speed manual or optional four-speed automatic transmission.

A part-time 4WD system offers real off-road ability through a two-speed transfer case. Both the transfer case and fuel tank are skid plate-protected. A move up the model ladder to an SR5 V6, like my test vehicle, adds the 3.4L DOHC V6 competitively rated at 183 hp with 217 lb-ft of torque.

No surprises here. A smooth and efficient powerplant. The appreciable extra pulling power motors a fully loaded 4Runner along very nicely, the extra oomph, adding up to a towing capacity of 2,268 kilograms/5,000 pounds.

Along with the bigger motor, this package adds four-wheel ABS, bigger 16-inch wheels and tires, cruise, power locks and mirrors and a few other goodies. The V6 versions also gain a standard CD audio system and keyless entry.

If you can pony up the dough, the top-of-the-line limited gets goodied-up to the max with a one-touch locking centre differential, integrated fog lamps, automatic temperature control, premium sound system and heated side mirrors. Not to mention power seats, a sunroof and all the required luxu amounts of cowhide and simulated woodgrain.

No matter what version of Toyota 4Runner you drive, you'll experience a feeling of snug solidity. We trekked back and forth to the cottage and the 4Runner passed the gravel road, frog slalom and bunny brake tests with flying colors.

The thumping harshness of past suspensions has definitely mellowed over the years. Variable-damping shocks, independent front suspension, four-link rear suspension and rack & pinion steering all contribute to a taut, well-mannered driving experience that offers the best combination of crisp handling and comfort.

Like I said, no surprises. Which is not necessarily a negative factor. In fact, it's probably a definite plus. I'm certain that most 4Runner loyalists would argue that, chief on the list of Toyota qualities, the 4Runner's "no surprises" dependability is what brings customers into the showroom in the first place.