

# Take a Little Drive

## Drive a Lot Better Deal



2000 Neon Four Door  
 Air conditioning, 132 HP engine, automatic, AM/FM stereo, cassette, aluminum wheels, \$1500 Service Loyalty Program, power steering and brakes, split rear seat, 7 additional payments of \$269.00  
 Certified to be Y2K compatible

total due on delivery

\$341.00

\$269.00 per month plus taxes

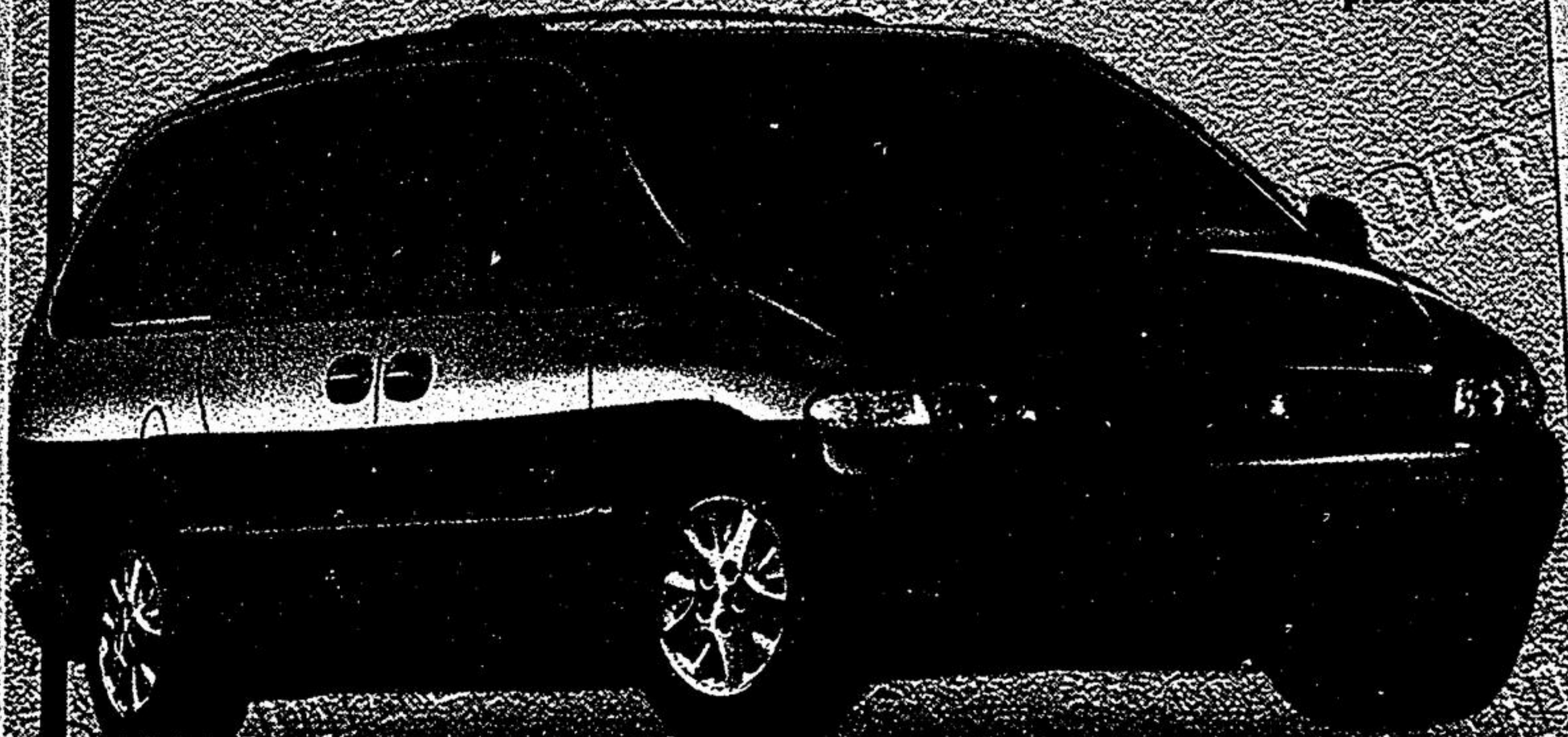


1999 Cherokee Sport #99250  
 6 cylinder, air, stereo and lots more  
 36 month lease

total due on delivery

\$1,373.00

\$399.00 per month plus taxes  
 55 additional payments of



1999 Dodge Caravan Silver Anniversary Edition or 267 267 and 15 Anniversary Edition while they last, V6 engine, automatic, air, stereo, power windows, power locks, tilt wheel and cruise control, seven passenger seating, dual doors, roof rack  
 (supplies are limited, dealer locate may be necessary)

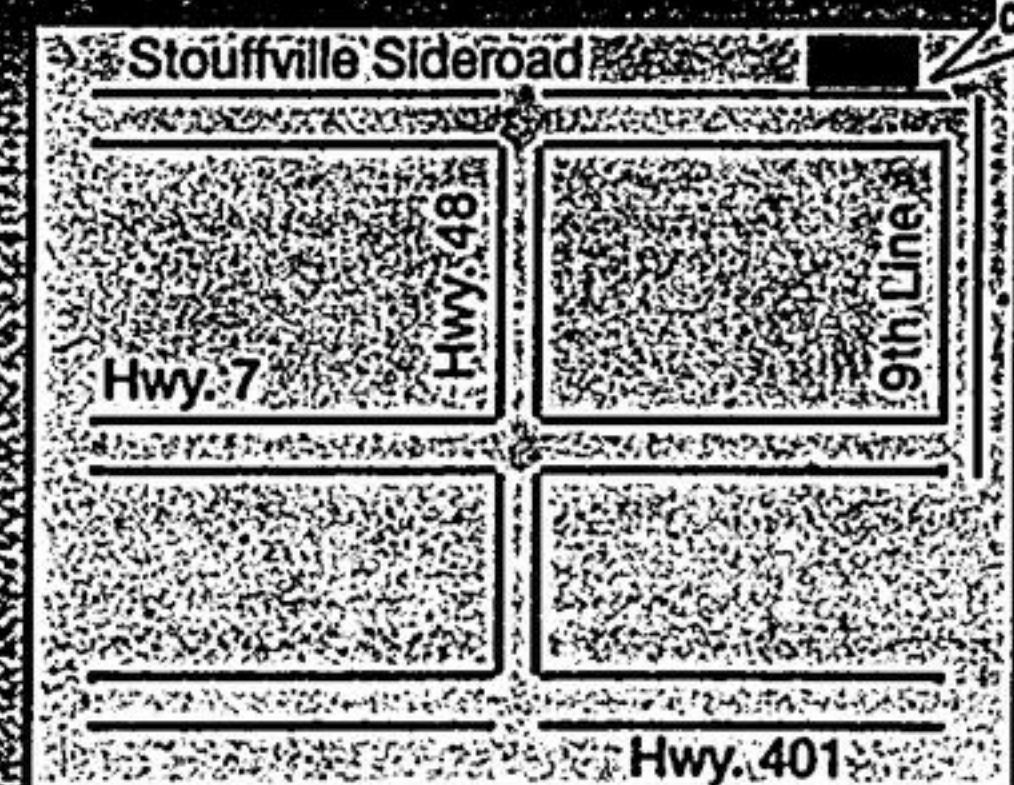
total due on delivery

\$770.00

\$348.00 per month plus taxes  
 27 additional payments of

### 10 Reasons Why You Should Lease Your Next Vehicle From Stouffville Chrysler

1. We don't need fine print in our ads because there are no surprises. We don't drag you in with a low rate and try to wipe out your bank account with a monster down payment.
2. Yes we accept trade-ins and if your vehicle is worth more than the total due on delivery you can apply it to the lease and lower your payment or take it in cash and pay down other debt.
3. Every lease includes 25,000 kms not 20,000.
4. Every sale price or lease includes freight, you can't avoid it so why hide it like most dealers.
5. Stouffville Chrysler is an equal opportunity employer. Half of our sales staff is female... the other half isn't.
6. Stouffville Chrysler is going for ISO 9002!
7. We're close to the country, our overhead is lower and we can afford to be flexible on price and lease rates.
8. You can go out into our shop and talk to our technicians and they will actually talk back.
9. We believe in providing selection, service and sincerity.
10. The owner writes these ads... take a little drive and you too will drive a better deal.



Attention: Offer Ends Sept. 9, 1999

**Stouffville**  
**CHRYSLER INC.**

www.stouffvillechrysler.com

"Come as a customer, stay as a friend"



5755 Main St., Stouffville

Call now 603-340-5200 or 1-800-322-6049