

INSIDE: Opinion . . . 6  
Calendar . . . 16  
Scoreboard . . . 19  
Classified . . . 20

18 The Spirit of  
Stouffville ink two  
big stars from Richmond  
Hill bantams

FESTIVAL HIGHLIGHTS  
EVENT: Fun Dog Show  
WHEN: Sunday, register noon, show 1:30 p.m.  
WHERE: Franklin Park



14 Will Smith and  
Kevin Kline saddle  
up for *The Wild, Wild  
West*, opening this week.

SERVING WHITCHURCH-STOUFFVILLE SINCE 1888

# Stouffville Tribune

50 CENTS INCLUDING GST / 24 PAGES

TUESDAY, JUNE 29, 1999

TO REACH US: (905) 640-2100

## CITIZEN OF THE YEAR

Harry Bowes is recognized for his tireless, dedicated contributions

# One fine citizen

He's saved every  
thank-you note

BY BRUCE STAPLEY  
Correspondent

Thirty-two years as an education facilitator and tireless volunteer have led to Harry Bowes being named the *Tribune's* Citizen of the Year for 1999.

The 75-year-old Opal Court resident and former York Region District School Board chairperson has exemplified the virtues of citizenship since moving to Stouffville in 1967.

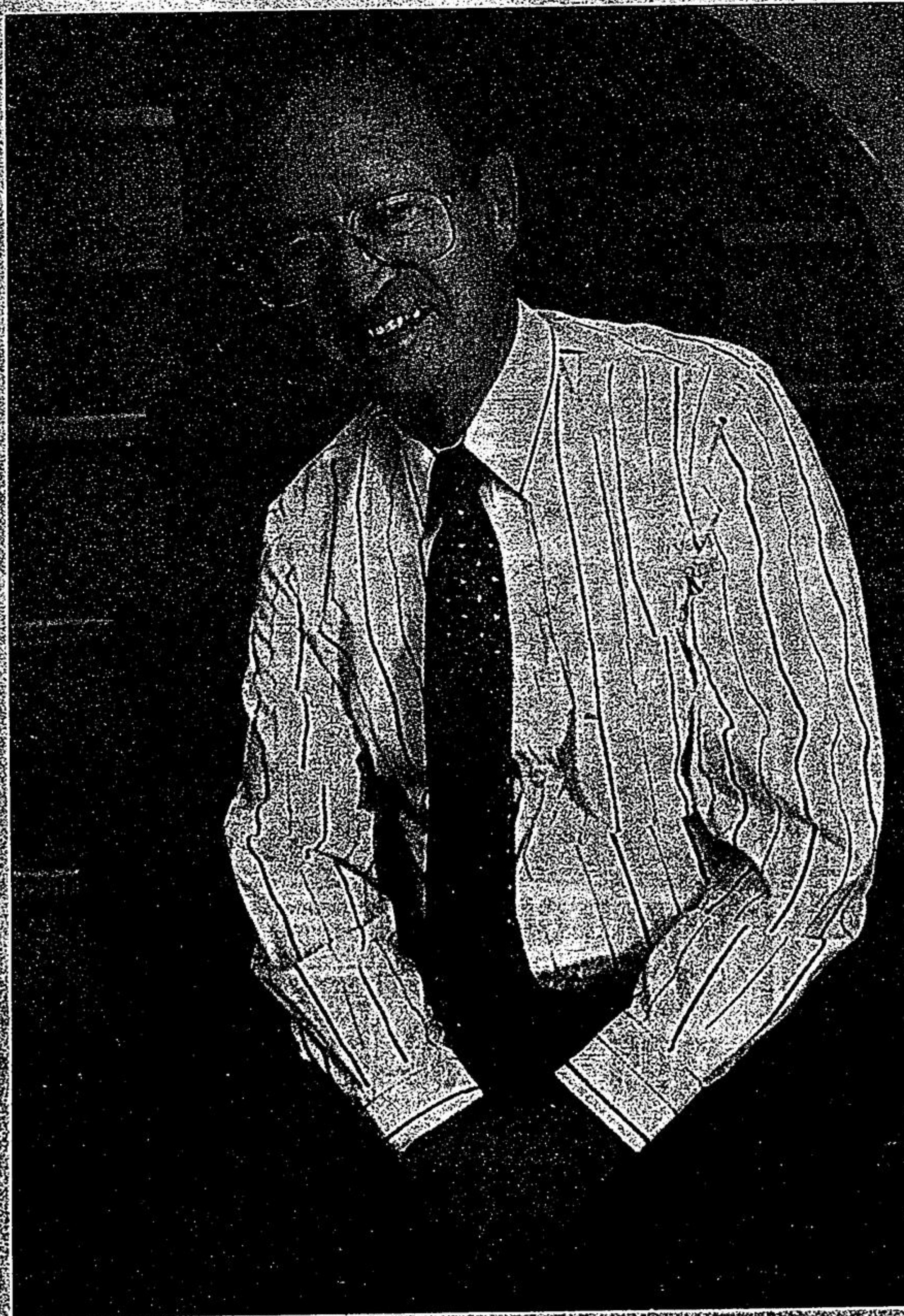
Bowes, a veteran of the Second World War and retired pharmacist, has involved himself in no less than 17 local service clubs, non-profit organizations and sports associations during his years in Stouffville.

He stepped down from the York board last year after serving for more than 22 years as Stouffville trustee, six of those as board chairperson.

He continues to sit on three local school councils, and makes regular visits to the board offices in Aurora. He has been asked to serve as a host at the board's upcoming International Conference on Education. Bowes is also involved in several time-consuming projects as a member of the Stouffville Legion, Rotary Club, Whitchurch-Stouffville Museum and Latham Gallery.

"It's certainly an honour," Bowes said of his recognition as Citizen of the Year.

He feels volunteer work is a way of life in Stouffville and that he's simply been doing his part.



STAFF PHOTO/SIOERD WITTEVEN

Harry Bowes was nominated by dozens of citizens and groups and has been awarded the 1999 *Stouffville Tribune's* Citizen of the Year title. We caught up with Bowes relaxing at his Opal Court home last Wednesday.

# Laneways, farm fields focus of foot search

Missing woman's  
mother longs  
for answers

BY JOAN RANSBERRY  
Staff Writer

Police officers on foot, in cruisers and on mountain bikes arrived in Stouffville yesterday to carry out a massive ground search in connection with the disappearance of Tammy Lamondin-Gagnon.

The three-phase search for the 20-year-old Newmarket woman is concentrated on rural areas in and around Stouffville.

"We are patrolling various rural routes in the area of north Stouffville. Our geographic profiler told us this was the best search area," Det. Sgt. Denis Mulholland said.

"We will be checking laneways, farm fields with vehicle access and ditches. We certainly can't search all of Whitchurch-Stouffville, it's a massive area," Mulholland said.

The 25 police officers, using extended batons as search sticks, will comb the area all week if necessary, he said.

At some point, the York Region helicopter unit will join



STAFF PHOTO/STEVE SOMERVILLE

**BODY SEARCH:** York Regional Police officers Vernon Ward (left) and Tom Korte search along Bloomington Road in Stouffville Monday morning on bicycles in search of evidence in connection with the disappearance of Lamondin-Gagnon.

in, while the public may be asked to participate in the last phase, Det. Rick McVeity said.

York (Region) has vast rural lands. We'll start here and take it from there. This is a big search.

Lamondin-Gagnon was last seen with Pol Claassen, 27, on May 29. Claassen hung himself at his family's business in Vandorf on June 7.

On Friday, police completed a four-day search of Claassen's

See FOOT, page 3.

ULTIMATE SATELLITE  
200  
CHANNEL  
MINI DISH  
SALES/SERVICE  
www.ultimate-satellite.com  
Tel: (416) 876-4884  
(905) 642-4705  
Fax: (905) 640-0275

STOUFFVILLE CANADIAN TIRE  
STERLITE TOTE SUPER SALE PRICE \$9.99  
6 piece  
REG. \$14.99

AUTO CENTRE  
RETAIL STORE

Rees Dixon  
FINANCIAL SERVICES  
Insured Deposit Rates  
Savings Account 4.25%  
1 Year 5.25%  
3 Year 5.55%  
5 Year 5.80%  
Rates subject to change  
GIC's • RRSP's • Mutual Funds  
Life Insurance • RRR's  
KEN PRENTICE CFP  
Ringwood Dr., Stouffville  
642-9507