

NORTHTOWN FORD SUPERSTORE

The Great 30 Hours Sale!

THURSDAY to SATURDAY, MAY 13, 14 & 15

Thurs. 9:00am-6:00pm • Fri. 9:00am-6:00pm • Sat. 9:00am-6:00pm

**STICKER PRICED • NO HAGGLE
FULL BOOK VALUE ON ALL TRADES**

200 Over 2.9% 300 Over

USED VEHICLES

FINANCING

NEW VEHICLES

0% FINANCING

NEW VEHICLE VALUES...

99 EXPEDITION XLT 4x4
4.6L V8 engine, air conditioning, running boards, loaded.
Stk#57540

\$38,995 Plus FRT, and all applicable taxes.

99 F150 4x2
STYLESIDE SUPERCAB, 4.2L V6, AM/FM stereo cass.,
40/60 split bench. Stk#57687

Lease for **\$329⁹⁶** 36 mth lease plus taxes

99 TAURUS SE
4 DOOR SEDAN, auto, 6 way p/drivers seat, p/heated
mirrors. Stk#57489

Lease for **\$299⁹⁶** 36 mth lease plus taxes

99 RANGER XLT
4x2, 3.0 EFI V6, air conditioning, sliding rear window.
Stk#57101

Lease for **\$249⁹⁶** 36 mth lease plus taxes

Here's just a sample of some of the INCREDIBLE DEALS you'll find...



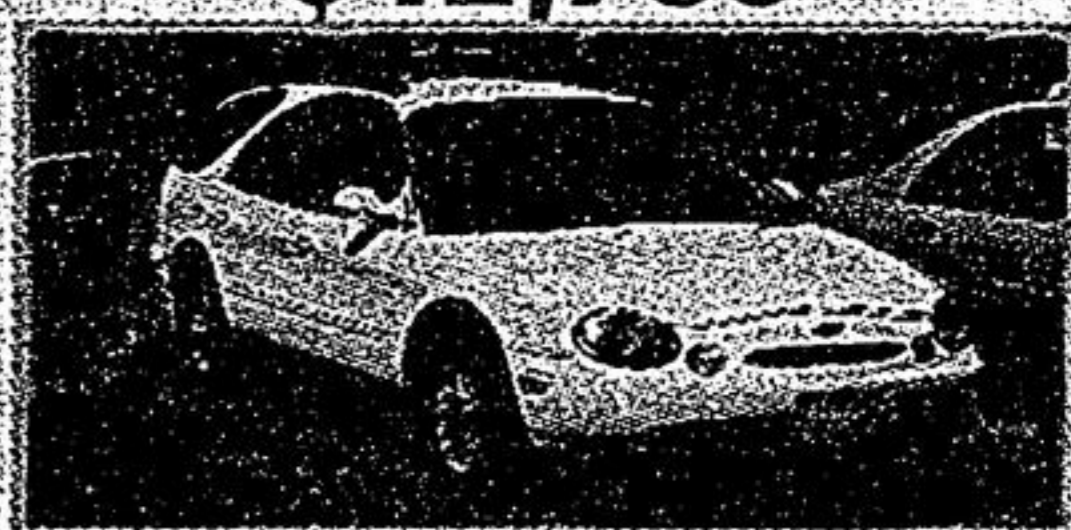
97 Oldsmobile Delta 88
Aluminum wheels, power seats.
\$19,995 ***



98 Escort LX Sedan
Automatic, air conditioning
\$13,995 ***



97 Escort LX
Low kms, automatic.
\$12,795 ***



97 Taurus Wagon
P/seats, alloy wheels, p/windows, p/locks
\$14,995 ***

DEMOCLEAROUT



99 Contour
V6 SE sport, leather, roof, traction control. Stk#57056
\$22,495 plus tax.



99 Mustang • 2 Door Coupe
3.8 EFI engine, air, p/windows, p/locks, rear spoiler. Stk#5746
\$21,995 plus tax.



99 Taurus SE • Station Wagon
Auto, antilock brakes, 6 way power seat. Stk#57186
Lease for **\$274⁹⁶** plus tax. 36 mths



98 Taurus SE
4 dr sedan, keyless entry, rear spoiler, CD changer. Stk#56278
\$22,995 plus tax.

WE LEASE QUALITY USED CARS & TRUCKS

GTAS #1 VOLUME NEW & USED

FORD DEALER

IN 1998

Sale ends Saturday
at 6:00pm



"Customer Driven Since 1966"

7120 Yonge St. • Thornhill

Yonge St. just north of Steeles

Visit our Website - www.norhttownford.com

(905) 889-7343

For the
air we breathe.
*An official mark of the
Province of Ontario used
under license.



**36 mth lease HOV NATIONAL. Leasing 20,000 km allowance per yr. excess km charge 8c per lease rate. 10 1/4% APR. payment is plus tax. \$3,000 to include freight, P.D.I., administration, 1st payment and license transfer, closed end lease. O.A.C. All prices plus administration and taxes. 2.9% O.A.C. financing. * All prices plus freight and all applicable taxes. †Based on TDFA report dated Dec. 98