

ADVERTISING FEATURE

LAWN AND GARDEN

Decks can be as simple or as complicated as you want

FROM PAGE 21.

observe the kind of sunlight your deck will be exposed to.

This is important in deciding whether you will need to add a trellis to your deck for sunlight protection, privacy or both.

The design of your deck can be as simple as a wooden platform or as complicated as a multi-level deck with railings, benches and a trellis.

This is the most personal aspect of building your deck, so give this some serious

thought. If you feel your dream deck will put too much strain on your budget, consider building it over the next three to five years.

thought. If you feel your dream deck will put too much strain on your budget, consider building it over the next three to five

years. You can build the main deck platform now and add new levels, trellises, planters, benches and whatever else you want slowly over the next several years.

Ponds without pumps require more work

FROM PAGE 19.

you are using a rubber liner, you will need to measure the hole so that you can purchase the right sized liner.

Don't forget to have your utilities marked before digging so you don't cut buried power lines.

CONSTRUCTION

Begin with the deepest point. A standard depth is 18 inches, but if you add fish, you will need to dig down two to three feet.

The bottom of the pond should be flat, so make sure it is level. Remove all rocks, cut back roots in the basin and add about two inches of sand before putting the liner in place.

You may not need a filter if you keep the algae growth and ammonia levels in check and maintain a balance between oxygenating plants and have a minimal number of fish. A pump will keep the water circulating and therefore will cut down on constant upkeep.

Dr drape the liner in the hole and anchor the edges with weights to preserve its position and form. Use native stone, boulders or discarded brick to finish the edges. Fill the pond with water

to just below ground level.

PUMP/FILTER

Ponds without pumps generally require more care and upkeep.

You may not need a filter if you keep the algae growth and ammonia levels in check and maintain a balance between oxygenating plants and have a minimal number of fish. A pump will keep the water circulating and therefore will cut down on constant upkeep.

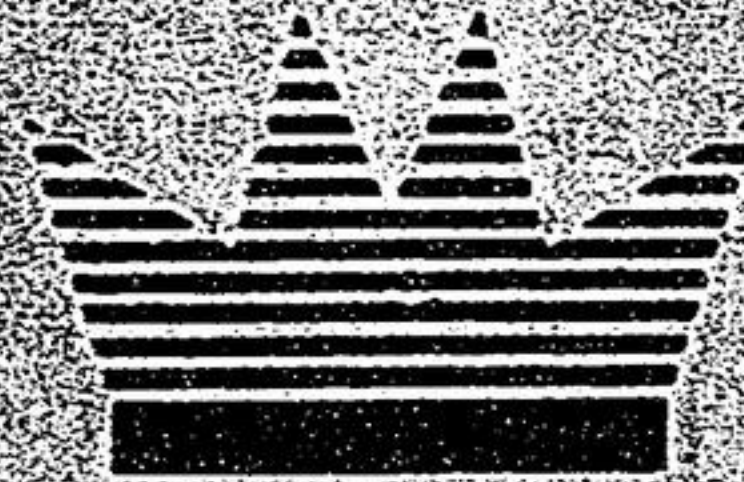
The filter is used to collect decaying organic matter. To assure complete filtration, locate the pump and filter at one end of the pond, then run discharge tubing to the opposite end. This will ensure the entire pond is thoroughly filtered, Mansz said.

PLANTS & FISH

Add one bunch of submerged plants for every one to two square feet of pond surface. Plant lilies in containers and set them on submerged bricks.

Japanese ornamental fish known as koi have become popular in water gardens, but many pond owners are content with stocking gold fish.

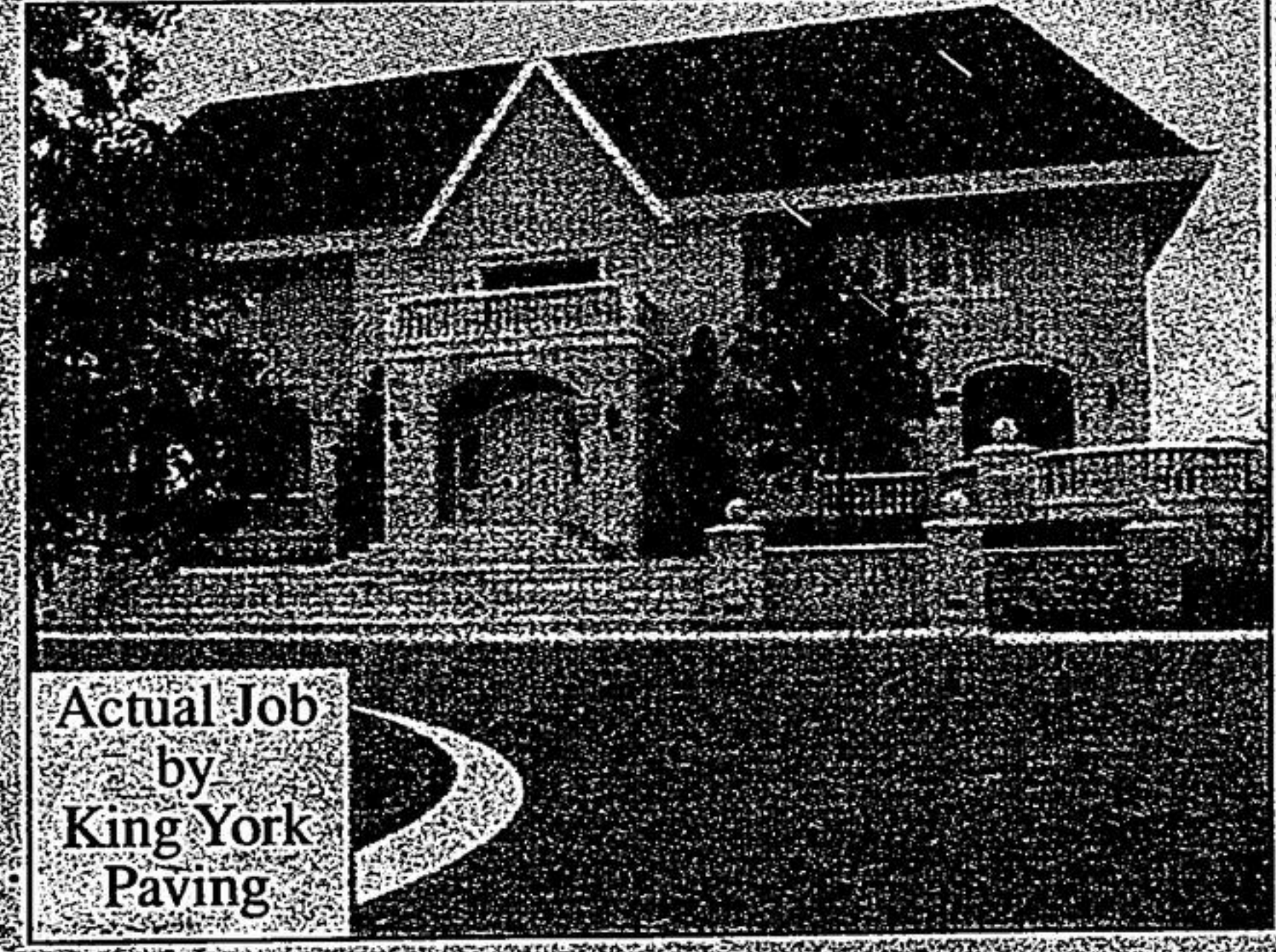
Plan on one inch of fish per foot of pond surface.



King York

PAVING LTD.

WHERE THE CLIENT IS THE KING!!



Actual Job by King York Paving

SPECIALIZING IN:

- ASPHALT PAVING
- INTERLOCKING
- CONCRETE
- DRIVEWAYS
- PARKING LOTS
- MAIN ROADS
- WALKWAYS & CURBS
- EXCAVATION
- GRADING

QUALITY & SERVICE

We use heavy-duty equipment for better compaction.

All work is guaranteed.

References are proudly available. Free estimates.

MAINTAINED BY IMITATION FIGUREHEADS TRUST THE KING"



King York

PAVING LTD.

EARLY BIRD
SPRING SPECIAL
15% off

CALL NOW
AND TAKE
ADVANTAGE OF
APRIL
SPECIAL

CALL NOW! (905) 660-1910 • TOLL FREE 1-800-946-6601