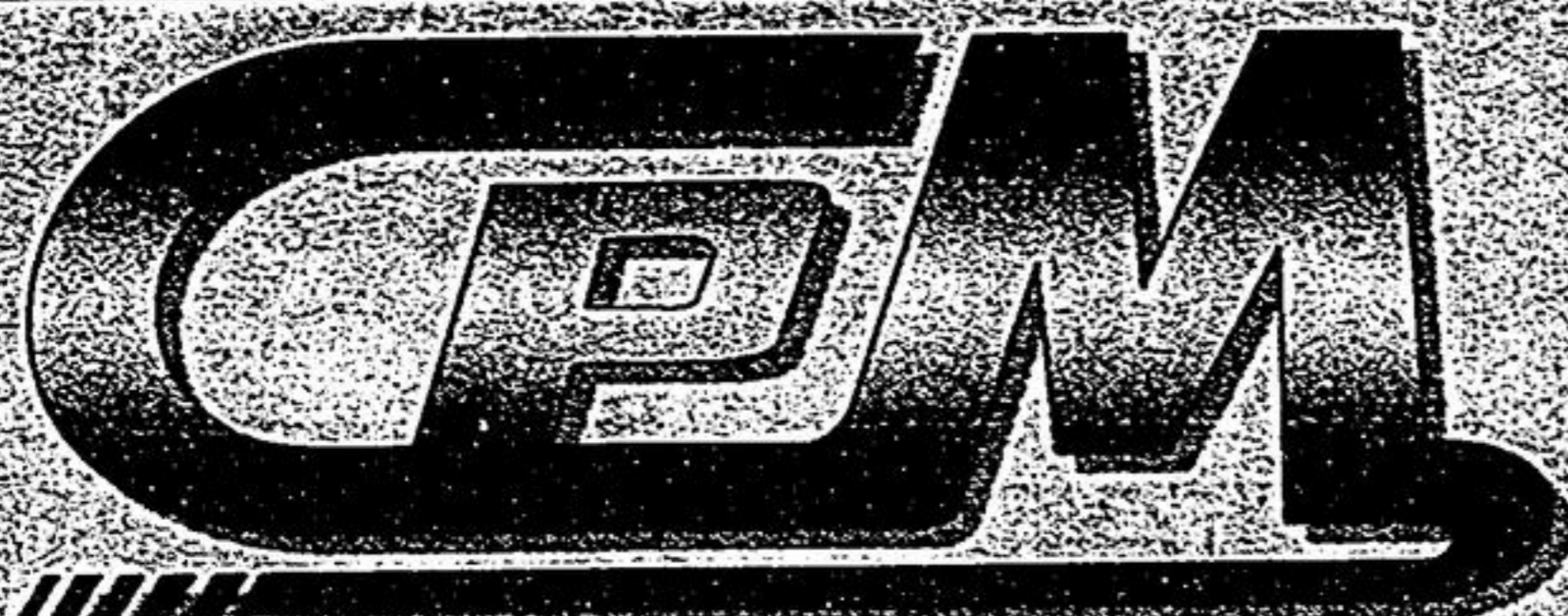


THE NEWS

Whether it happens next door or across the region, read about in:

Economist & Sun • Stouffville Tribune
 (905) 294-2200 (905) 640-2100



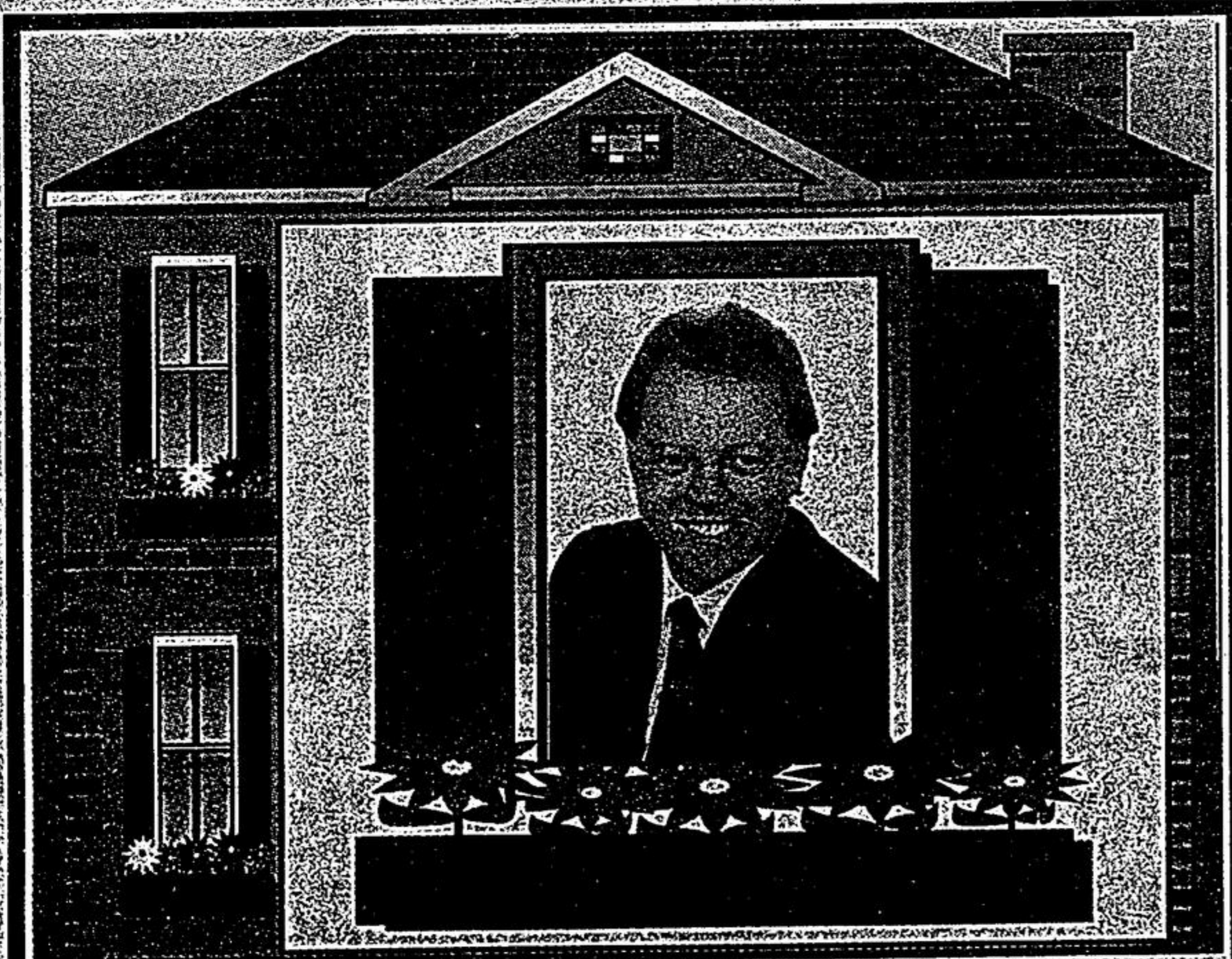
COMPLETE PROPERTY MAINTENANCE

25% LESS THAN EXISTING AGREEMENTS! **OWNER OPERATED**

SPECIALIZING IN RESIDENTIAL PROPERTIES

- FALL/SPRING CLEAN-UPS
- WINTER SNOW REMOVAL (RESIDENTIAL PROPERTIES START AT \$150.00)
- YEAR ROUND MAINTENANCE

FREE ESTIMATES CALL (905) 640-7600



"NICE MOVE" *"NICE MOVE"* *"NICE MOVE"*

Kirk has strived over the years to provide you with the most advanced and innovative sales techniques available, to give you maximum service, while maintaining a "no pressure policy" whether your buying, selling, or have inquiries, call **Kirk B. Nice*** today for fast and friendly service.

Sutton
GROUP

Town & Country
Realty Ltd.

(905) 640-0888

*Sales Representative

COMMUNITY: More than \$2 million collected across Canada

MS walk raises \$48,000

More than \$48,000 was raised Sunday by walkers for the Multiple Sclerosis Society.

The 500 participants from Markham and Stouffville pounded the pavement through the heart of Markham, on routes measuring three, seven or 12 kilometres.

The top fundraiser, for a third year in a row, is Dr. Carolyn Geenan, a consulting neurologist at Markham Stouffville Hospital.

Across Ontario, 25,000 people walked in 33 communities today, raising more than \$2.8 million for the fight against MS.

The support of everyone involved in this year's walks — participants, volunteers, Loblaws and sponsors — will allow the MS Society to invest further in local services for people living with multiple sclerosis.

Ongoing programs include support counselling, equipment programs, social and recreational activities, education workshops and self-help groups. The walks also support the MS Society's national research program, which invests more than \$5 million annually in research.

Since its founding 50 years ago, the society has been a leader in funding MS research and providing services to people with MS throughout Canada.

Multiple sclerosis is a disease that randomly attacks the central nervous system, affecting the control people have over their bodies. Canada is a high risk area for MS, which is usually diagnosed in people between the ages of 20 and 40 — prime family and career building years. Its effects last a lifetime.

Researchers are learning more every day about what cause MS, moving one step closer to finding a cure for this often disabling disease.



PHOTO/LORI EMMERSON

The Barrett family and friends participate in the MS walk.



Junior firefighter Daniel sits with firefighter Peter Jennings, while volunteers Alexandra and Ashley stand with Sparky at the York East chapter MS fundraising walk Sunday.

90 OVERWEIGHT WOMEN NEEDED

CASE STUDY Lisa Ferreira

"I'm proof that members achieve their results!"



10 MONTHS LATER
135 lbs



STARTING WEIGHT 216 lbs

"With advanced, professional equipment and the intelligent training program you can...

achieve your goals!"

Leading Health & fitness centre needs another 90 overweight people for a new, advanced monitored behaviour modification, reducing, nutrition and professional exercise program. ALL PARTICIPANTS will be offered this program as part of a registration free complimentary membership, subject to maintenance dues only.

LIMITED SPACE AVAILABLE

FREE REGISTRATION

for a limited time only - call NOW.

For a personal consultation call a counselor.

For a personal consultation call (905) Litsa (counselor):

475-6888