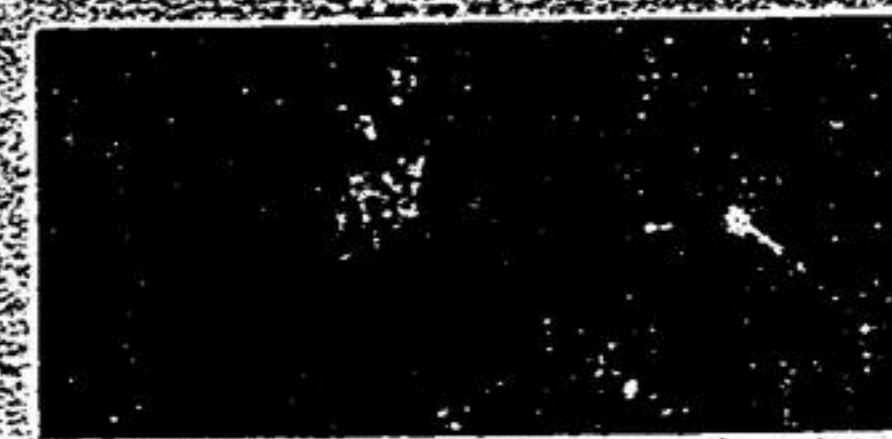


**INSIDE:** Opinion 6  
 Calendar 11  
 Scoreboard 16  
 Classified 17

**15** Stouffville Bantam Clippers earn berth in silver stick tournament finals.

**ARTS & CULTURE CALENDAR**

**EVENT:** Music Mania start-up meeting  
**WHEN:** Tomorrow, 7:30 p.m.  
**WHERE:** Summitview Public School



**12** A crew climbs aboard a Russian science vessel in *Virus* opening this week.

SERVING WHITCHURCH-STOUFFVILLE SINCE 1888

Whitchurch-Stouffville Public Library

# Stouffville Tribune

50 CENTS INCLUDING GST / 20 PAGES

TUESDAY, JAN. 5, 1999

TO REACH US: (905) 640-2100

**NEW YEAR BABIES**

*Stouffville's first new citizens of 1999 were born Jan. 1*

## Seeing double

BY CAITLIN DRAKE  
CORRESPONDENT

**T**he first Stouffville baby of 1999 arrived at Markham Stouffville Hospital at 10:55 p.m. on New Year's Day.

And the baby's sibling followed shortly thereafter.

Stouffville resident and new mom Deborah Lytle welcomed her two bundles of joy into the world late Friday night.

The impatient twins didn't want to miss ringing in the new year, arriving

about two weeks early.

Spencer, who weighed in at a bounding eight pounds, eight ounces, and sister Jaime, who tipped the scales at five pounds, two ounces, were not due until Jan. 14.

"We were fully prepared (for the early birth)," Deborah said, adding twins are often born earlier than the usual 40-week pregnancy.

Both babies are healthy and happy, mom said.

Deborah and her husband, Jim, are happy to welcome the first additions to their family.

The couple is eager to take their new babies home, away from the hustle and bustle of the hospital, Deborah told *The Tribune* yesterday.

Hospital spokesperson Rosalie Penny said seven babies were born Jan. 1 — about an average day in the birthing unit.

Parents came from surrounding towns like Scarborough, Sandford and Pickering to have their babies at Markham Stouffville, she said.

The very first new year's baby, a boy, was born at 12:01 a.m. to Pickering's Rosemarie Bonjiorno.



PHOTO/LORI EMMERSON

Proud new parents, Jim and Deborah Lytle of Stouffville, welcomed their beautiful new twins, Spencer, with dad, and his sister Jaime, with mom. The healthy babies were born 10:55 p.m. on Jan. 1.

## Town prepared for snow storm

*Town provides service to seniors*

BY MIKE ADLER  
STAFF WRITER

Stouffville's plows attacked snow at 5 p.m. Saturday and have worked almost around-the-clock since, works superintendent Denis Chartrand said yesterday.

During the first big storm of 1999, the town fielded eight plows of various sizes, plus two contracted plows and two sidewalk-clearing units.

A front-end loader was also used to open up some streets Sunday, he said.

Chartrand said the crews' strategy Saturday night was to concentrate on keeping main routes like Main Street and the Ninth Line open. All roads were "pretty well open" by 5 p.m. the next day, he said.

There were some sidewalks that still needed clearing yesterday, and the town had a massive amount of snow for its crews to pick up from the streets.

"That'll probably take another week or so," Chartrand said.

Meanwhile, the town offers a window-clearing service for seniors in the town who are unable to shovel away the heavy white stuff.

There are about 125 homes across Whitchurch-Stouffville — including the town's outlying hamlets — which enjoy the free service.

Public works director Paul Whitehouse said all the town's seniors and physically challenged residents can apply to have their windows cleared as long as there isn't an able-bodied person living in the house.

To apply for the service, seniors must fill out a form available at the town offices.

Mayor Wayne Emmerson, who thinks the crews handled the storm efficiently, said so much snow is "kind of nice to see," since it replenishes the local water table and provides a boost for tourism.

"I got a new snowblower. It's working out fine," he said.

**Ross Dixon FINANCIAL SERVICES**  
 Insured Deposit Rates  
 Savings Account 4.20%  
 1 Year 4.60%  
 3 Year 5.10%  
 5 Year 5.35%  
 Rates subject to change  
 GIC's, RRSP's, Mutual Funds  
 Life Insurance, RRIF's  
**KEN PRENTICE, CFP**  
 Ringwood Dr., Stouffville  
 642-9507

**STOUFFVILLE CANADIAN TIRE**  
**SNO-RACER**  
 Fun & Safe For Ages 8+  
**SUPER SALE**  
 Regular Price \$39.88  
**PRICED AT ONLY \$29.88**  
 82-6047-8

**AUTO CENTRE**  
 Monday - Friday 8:00 a.m. - 8:00 p.m.  
 Saturday 8:00 a.m. - 5:00 p.m.

**RETAIL STORE**  
 Monday - Friday 8:30 a.m. - 9:00 p.m.  
 Saturday 8:30 a.m. - 8:00 p.m.

**SAAB**  
 REPAIR SPECIALIST  
 172 BULLOCK DRIVE UNIT 31  
 MARKHAM  
 471-8660