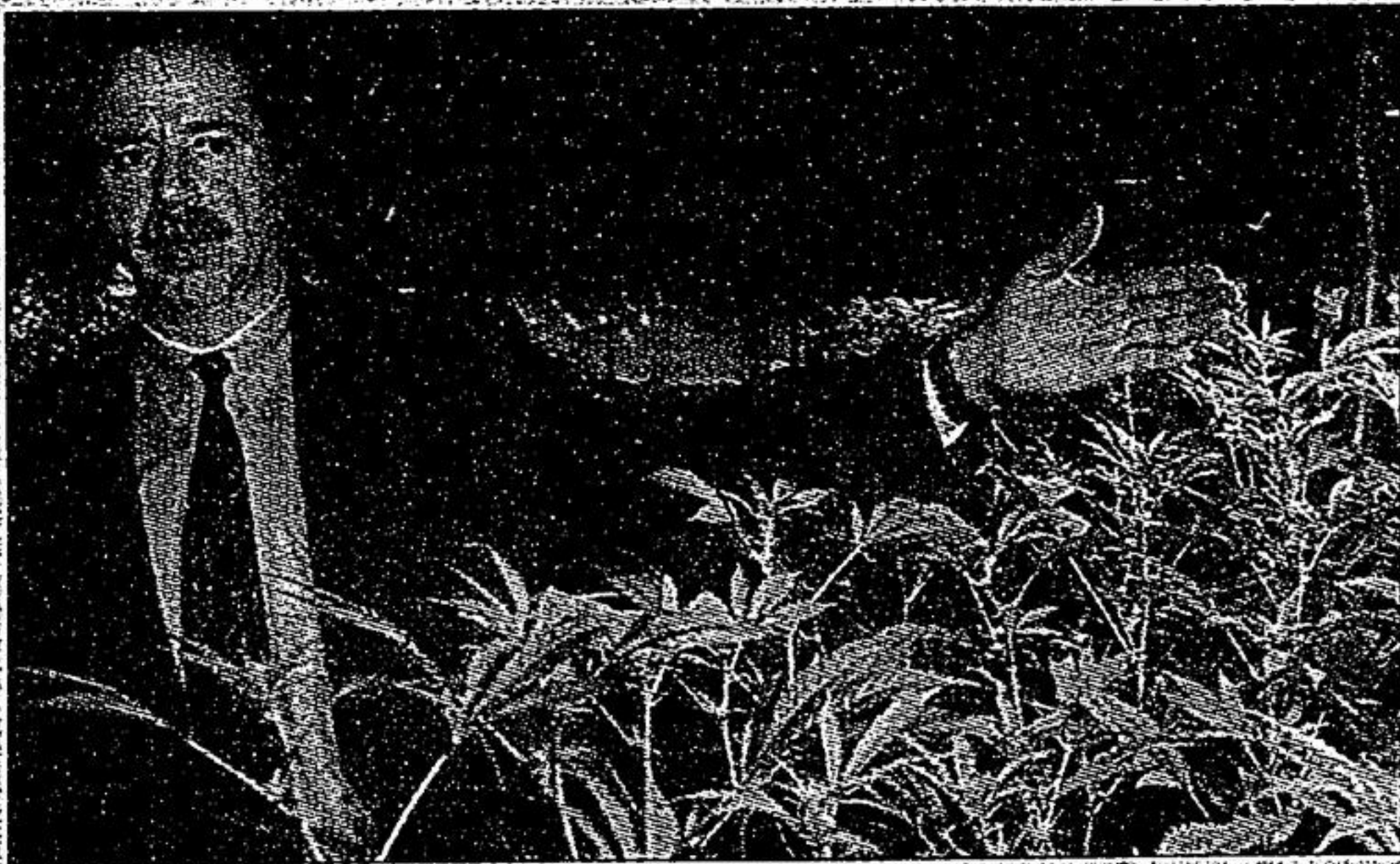
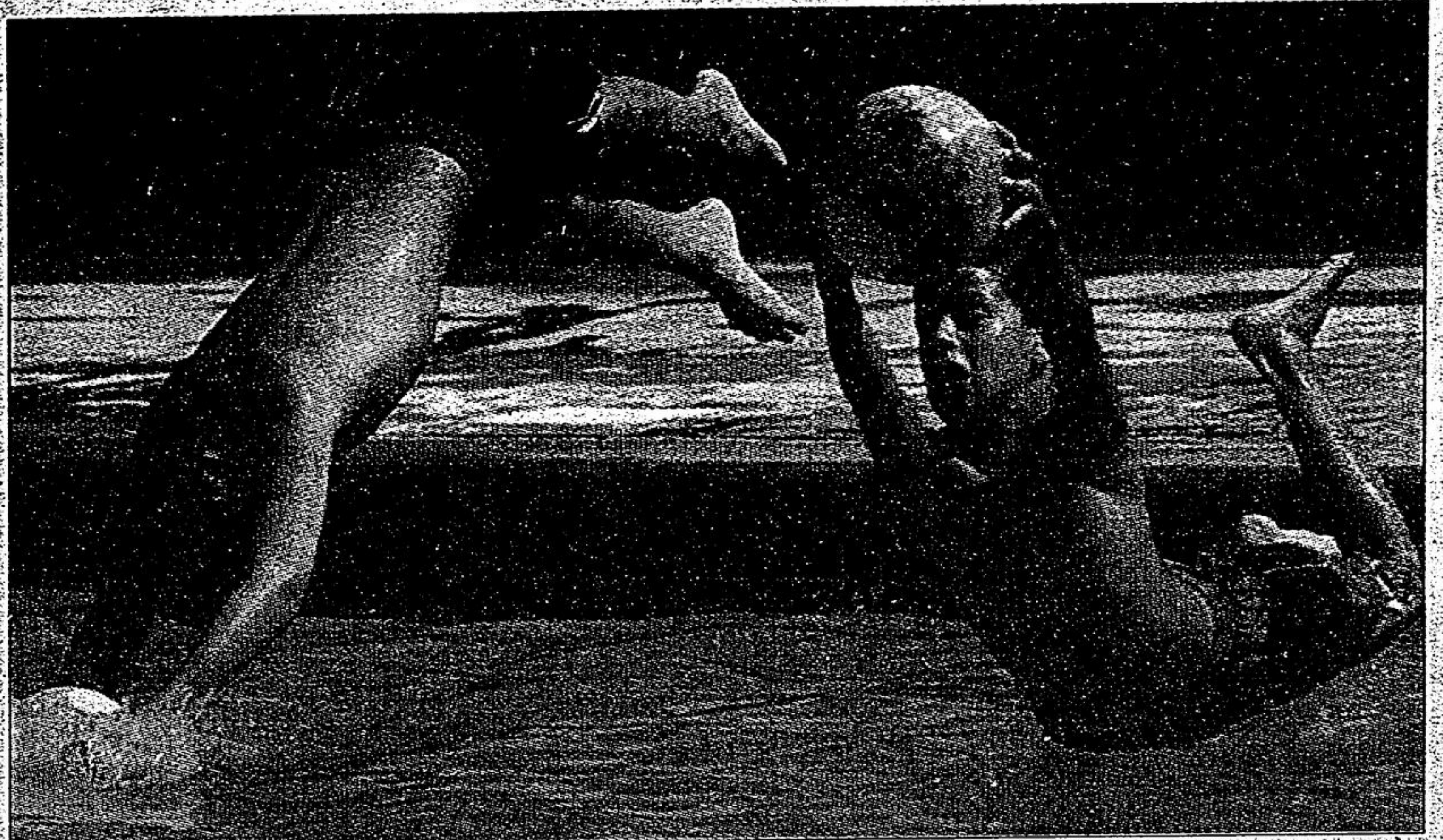
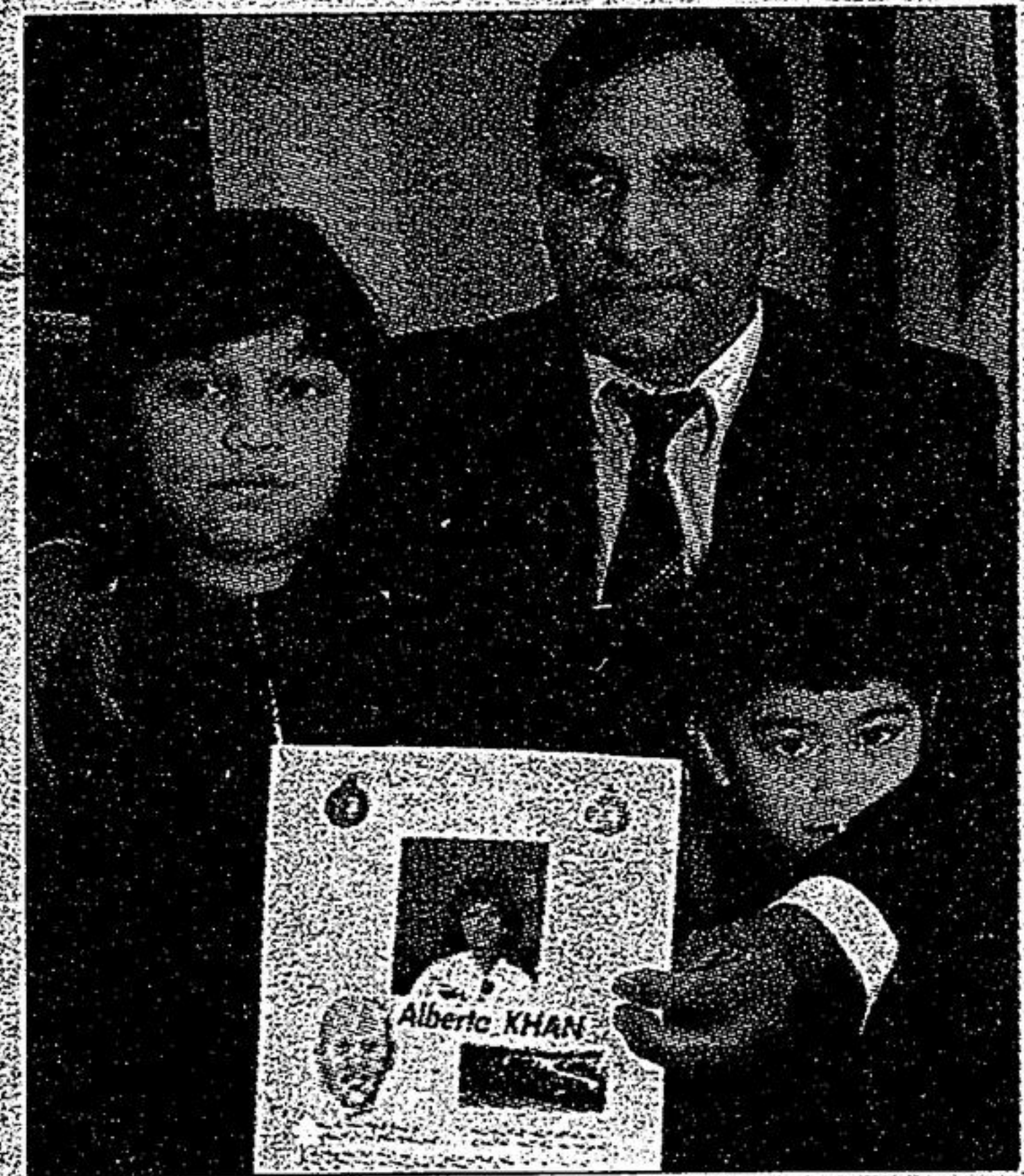


THE YEAR IN REVIEW: 1998 as seen through our photographers' lenses

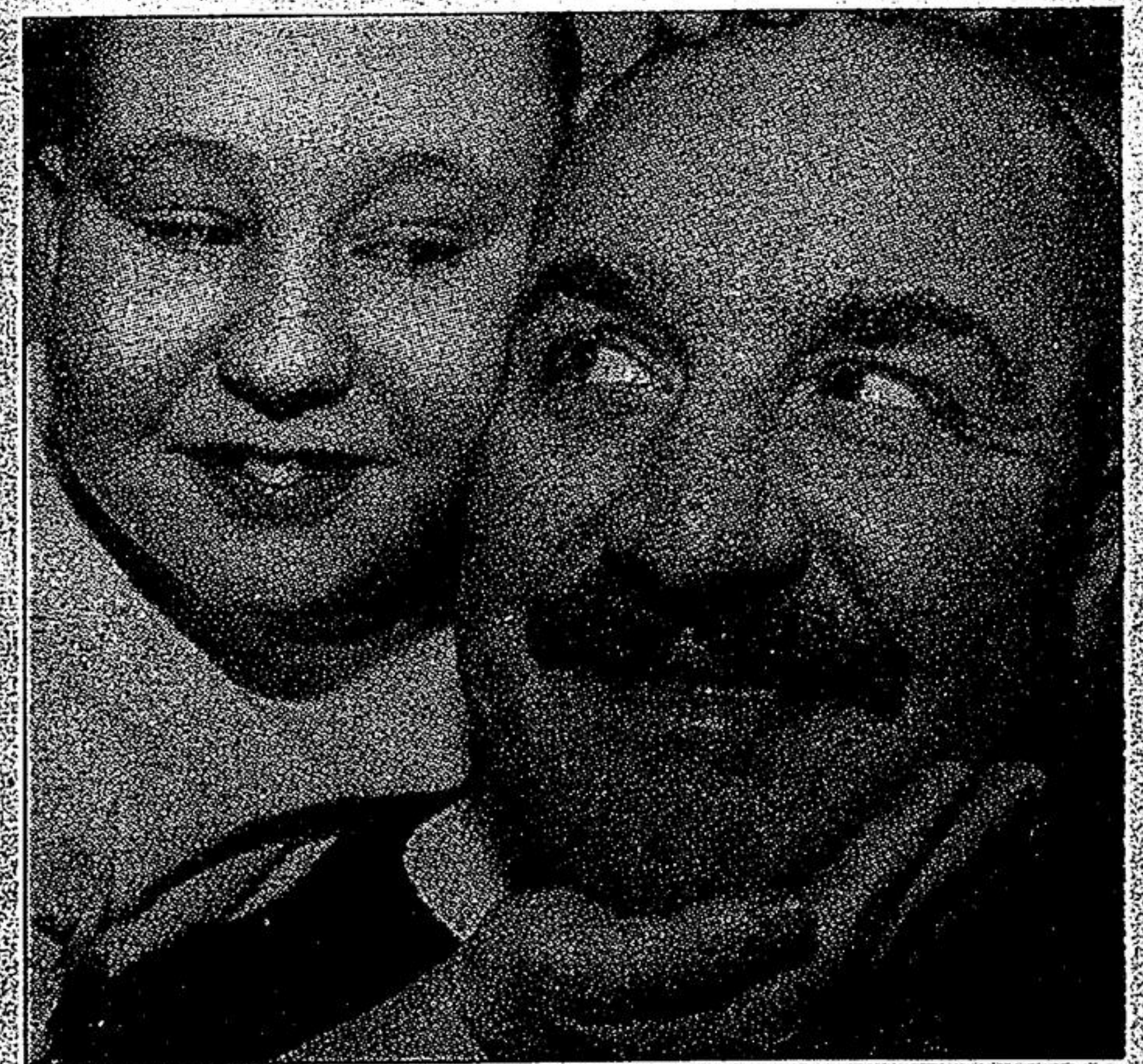


Our photographers had 1998 covered. Clockwise from top left:

- Politicians opened the eastern extension of Hwy. 407 to McCowan Road in February.
- Stouffville residents took to Memorial Park pool to beat the heat during the summer.
- The Khan family appealed to the public to help find clues in the still unsolved murder of store clerk Alberta Khan, killed in November, 1997.
- York Regional Police Insp. Eugene Kerrigan got a new hairstyle from cancer survivor Joe Cunningham during a fundraiser in January.
- Tragedy hit Dickson Hill Public School in April when student Courtney Trempe, 8, was killed by a bull mastiff, Mosley, in Stouffville. The dog was impounded and later put down.
- Both separate and public school students suffered through a fall full of closed schools during teacher strikes and lockouts.
- Police were on the scene of a Markham home invasion in June. The suspects were caught and convicted.
- The year ended on a high note for police as the biggest marijuana bust in York Region's history was made in December. Almost \$10 million worth of pot was found in hydroponic labs in three Markham homes.



Photos by Sjoerd Witteveen and Steve Somerville



Craig Riley's MARKVILLE LINCOLN MERCURY

4072 Hwy. #7 (east of Warden) 470-7044 Markham

0% BOXING WEEK BLOWOUT FINANCING FOR 48 MONTHS ON ALL NEW '98'S (excluding Lincoln)

INTERNET: www.markvilleford.com E MAIL ADDRESS: MARKVILLE@FOURSERVE.COM

<p>BRAND NEW 1998 WINDSTAR GL</p> <p>INCLUDES: 357 B PKG., INTERIOR CONVENIENCE GROUP, FAMILY SECURITY GROUP, QUAD BUCKET SEATS, OVERHEAD CONSOLE, HIGH CAPACITY AIR CONDITIONING, ALUMINUM WHEELS.</p> <p>BEST PRICE: \$24,688</p>	<p>BRAND NEW 1998 MERCURY VILLAGER</p> <p>INCLUDES: 975A PKG., ANTI-LOCK BRAKES, HIGH CAPACITY, AIR CONDITIONING, KEYLESS ENTRY, POWER WINDOWS, POWER LOCKS, PLUS QUAD SEATS/ALUMINUM WHEELS.</p> <p>BEST PRICE: \$23,688</p>	<p>BRAND NEW 1999 WINDSTAR LX 4 DR</p> <p>INCLUDES: TWIN QUAD GROUP, APPEARANCE GROUP, P.W., P.L., TILT, CRUISE, ALUMINUM WHEELS & MORE. STK. #87971</p> <p>BEST PRICE: \$26,388</p>	<p>BRAND NEW 1999 FORD EXPLORER SPORT</p> <p>INCLUDES: POWER WINDOWS, LOCKS, T.L., CRUISE, SOHC ENGINE, CD PLAYER. STK. #87747</p> <p>BEST PRICE: \$29,888 OR \$282/mo. 36 MONTH LEASE</p>	<p>BRAND NEW 1998 MYSTIQUE LS</p> <p>INCLUDES: 2.0L DOHC, 4 CYL, P/GROUP SPORT PACKAGE, REAR SPOILER, A/C, AUTOMATIC & MORE. STK. #7888C</p> <p>BEST PRICE: \$18,759 OR \$199/mo. 24 MONTH LEASE</p>	<p>BRAND NEW 1998 ESCORT SE SEDAN</p> <p>INCLUDES: AIR CONDITIONING, STEREO, OR AUTOMATIC</p> <p>BEST PRICE: \$13,988 OR \$14,888</p>
---	---	--	--	--	---

*THE FINE PRINT: Sale price includes cash back from Ford on 98 Windstar = \$2500; Villager = \$3000; Mystique = \$1500; Escort = \$1500. No factory subsidized interest rates with cash prices: 20,000 km per year, \$0.08 per km excess (10¢ on Expedition & Mystique) \$3990 down (0 down pymt. & frt. incl. on 99 Sable) plus 7% frt. taxes & regist. fees, opt. buyback O.A.C. Sec. dep., equiv. to mthy. pymt. reg. **11 0% taken for 48 mos. on ad price on 98 Windstar, 98 Villager, 98 Escort, 98 Mystique, 98 Explorer. Eff. int. rate is 4.19%; 0.75%; 4.9%; 4.8%; 2.39%. O.A.C. †Based on comb. retail sales 1994-1997. Offer exp. Jan. 4, 6 p.m.