

COMMUNITY CALENDAR

A PUBLIC SERVICE FOR NON-PROFIT ORGANIZATIONS
 CONTRIBUTIONS: THE STOUFFVILLE TRIBUNE, 37 SANDIFORD DR., STE. 306,
 STOUFFVILLE, ONT. L4A 7X5 • FAX: (905) 640-5477

FOR CHILDREN

WEDNESDAY, NOV. 4
 Irv Title will be speaking about the dangers of smoking to Grades 6 to 8 at Glad Park Public School, 300 Glad Park Ave., Stouffville, 9 a.m.

EVENTS

TUESDAY, OCT. 27
 Whitchurch-Stouffville Adult Skating Club Halloween Skate from 8 to 9 p.m. at W/S Recreation Centre. Refreshments to follow. Admission free, donations to the food bank accepted.

TUESDAY, OCT. 27
 Registration began Oct. 20 for Markham-Stouffville Family Life Centre's educational group for eating disorders to take place on Monday nights 7 to 9 p.m. for 8 weeks. Cost: \$125. Also, behaviour management program, cost: \$65, on Wednesday nights for 4 weeks. Call 475-0433 to register.

WEDNESDAY, OCT. 28
 Whitchurch-Stouffville Historical Society presents 1812 and Beyond: Remembering Other Veterans at Parkview Village Auditorium, Ninth Line, Stouffville, at 7:30 p.m. Call Stephen at 642-0342.

WEDNESDAY, OCT. 28
 Silver Jubilee Club plays bridge every Wednesday and Friday from 1 to 4 p.m. All ages welcome, beginners to expert.

WEDNESDAY, OCT. 28
 Stress reduction evening for people with disabilities and their caregivers, sponsored by the Epilepsy York Region at Loyal True Blue and Orange Home, 11161 Yonge St., Richmond Hill, 7:30

to 9:30 p.m. Wear loose clothing and bring a pillow. \$5 suggested donation. Call 508-5404.

FRIDAY, OCT. 30
 Halloween Ball for the Parkinson Foundation of Canada, DaVinci Banquet Hall, 5732 Hwy. 7, Woodbridge. Dinner, dancing, open bar, prize for best costume, \$50 per person. Call Foundation at 416-932-0315 for tickets.

FRIDAY, OCT. 30
 Student Music Scholarship Concert sponsored by St. James Presbyterian Church at Stouffville District Secondary School, 7 p.m. Featuring dancers, choirs and bands. Freewill donation towards school music programs.

FRIDAY, OCT. 30
 Teen Dance '98 Flavour featuring hip hop, R & B, Reggae and Calypso for ages 12 to 16 at Milliken Mills Community Centre from 7 to 11 p.m. Tickets \$5. Dances supervised by town staff.

FRIDAY, OCT. 30
 Canadian Hearing Society Open House at our office in the Weston Produce Plaza, 16655 Yonge St., Unit 3, Newmarket. Come and meet the staff and introduction to our services. RSVP to Ruth or Lynn (voice) 715-7511; TTY: 898-6646.

SATURDAY, OCT. 31
 Family Fun Night is a Christian alternative to Halloween at Stouffville Missionary Church, 6500 Main St. (also sponsored by Stouffville Pentecostal Church), 6 to 8:30 p.m. \$3 per person, \$15/family. Treat bags, game booths, costumes optional (nothing evil or violent in nature).

MEETINGS

TUESDAY, OCT. 27
 Friends of the Library meeting at the Whitchurch-Stouffville Public Library 7:30 p.m. Interested citizens welcome.

WEDNESDAY, OCT. 28
 Stouffville-Uxbridge Networking Breakfast meeting for small and home-based businesses at The Fickle Pickle, 6302 Main St., Stouffville, 8:01 a.m. For more info call Roy at 642-5485.

WEDNESDAY, OCT. 28
 Book Discussion Group meets in Whitchurch-Stouffville Public Library at 7 p.m. Topic: Utopia & Dystopia. New members welcome.

MONDAY, NOV. 2
 Canadian Diabetes Assoc. support group meeting at the Markham Police Station, 8700 McCowan Rd., at 7:30 p.m. Topic: Sharon Brown and Alana Landry, adult and children's diabetes educators from Markham Stouffville Hospital. Call Jean 477-1642.

TUESDAY, NOV. 3
 Glad Park P.S. Parent Council meeting in the school library at 7 p.m. Everyone welcome, we look forward to meeting you.

REGISTRATIONS

Aim For Change Women's Centre offers the following Fall groups free of charge: Group treatment for children 9-11 years who have witnessed woman abuse; Enterprising Women; Expressive Therapy; Making Changes. To register call Beth at 727-5837.

Yellow Brick House Counseling and Legal Support Services are running groups for women experiencing abuse. For more info or to register call 881-3344 or 1-800-565-0383.



THE CORPORATION OF THE TOWNSHIP OF UXBRIDGE
 MUNICIPAL OFFICE

51 TORONTO STREET SOUTH
 UXBRIDGE ONTARIO L9P 1T1

1998 FINAL TAXES

FIRST INSTALLMENT DUE

OCTOBER 30, 1998

If you have not received a tax bill and you are responsible for payment, contact the Tax Section immediately to obtain the necessary information 905-852-9181 or 905-649-1938.

Payments not received by October 30th, 1998 are subject to a penalty charge of 1.25% on the first day of default and on the first day of each calendar month thereafter until paid.

PAYMENTS CAN BE MADE

BANKS: CIBC Branches in Uxbridge, Stouffville, Claremont

TD Branches in Uxbridge and Mount Albert

DO NOT USE BANK MACHINES

TELEPHONE BANKING: Please check with your bank for availability. Individual Banking Fees may apply.

BY MAIL: Post Dated Cheques Accepted

IN PERSON: At the Tax Department - Office Hours
 Monday - Friday 8:30 a.m. to 4:30 p.m.

AFTER HOURS DROP BOX: Located at the front of the Municipal Building in the parking lot.

DO NOT DEPOSIT CASH

REMINDER: last Day to Appeal Your Assessment October 30, 1998

Gatherine Goldstone
 Tax Collector

LIQUIDATORS OF BRAND NAME MERCHANDISE FROM BANKRUPTCIES INSURANCE CLAIMS, RECEIVERSHIPS AND OTHERS
 Visit our Web Site at: www.liquidationworld.com

BRAND NAME PUZZLES

HOLOGRAPH ~~13⁰⁰~~ **7⁹⁹**
 ANIMAL ~~6⁰⁰~~ **3⁹⁹**
 500 Pieces
 SPORTS ~~9⁰⁰~~ **4⁹⁹**
 50 Pieces

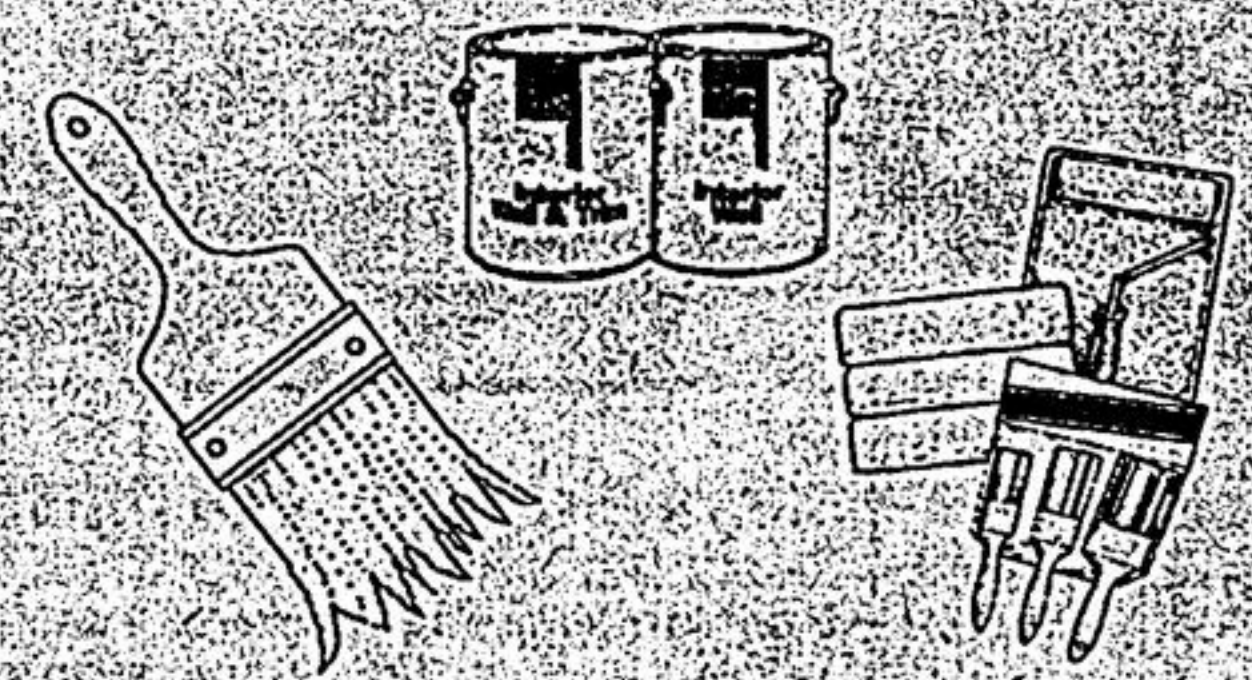
WHIRLPOOL BATH TUB

• 6 Jets
 • White Finish
 Compare 1000⁰⁰
499⁹⁹

PAINT LIQUIDATION

SEVERAL MAJOR PAINT MANUFACTURERS HAD A PROBLEM AND WE HAVE HELPED THEM OUT!

PAINT
 FLAT, 1 GALLON..... **10⁴⁹**
 SEMI-GLOSS..... **13⁹⁹**
 FLOOR/PORCH..... **9⁹⁹**



WROUGHT IRON TABLES

SQUARE, Set of Three..... **49⁹⁹**
 ROUND, Set of Three..... **39⁹⁹**
 FRUIT BASKET, 3 Tier..... **12⁹⁹**
 DECORATIVE BIRD CAGES..... **9⁹⁹ to**
 Small, Medium Large..... **19⁹⁹**

SAVE AT LEAST 40% OFF COMPETITIVE PRICES

CHILDREN'S BACK PACKS

Compare ~~10⁰⁰~~ **4⁹⁹**
 Compare ~~23⁰⁰~~ **7⁹⁹**

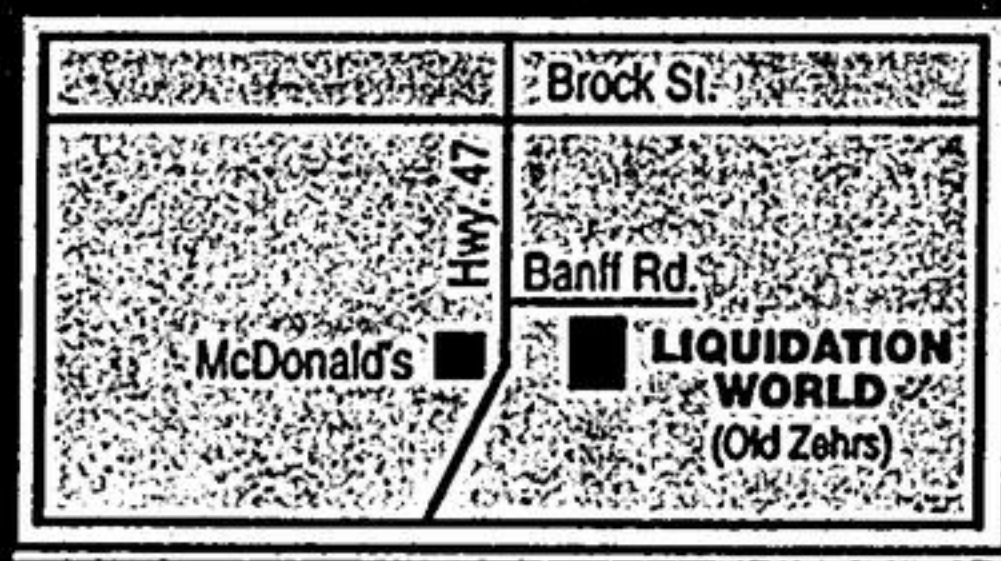
ADULT BACK PACKS

Compare ~~37⁰⁰~~ **19⁹⁹**

EQUIPMENT BAGS

Wide assortment of colours/styles
 Compare 25⁰⁰
14⁹⁹

DUE TO THE NATURE OF OUR BUSINESS, WE ARE UNABLE TO ADVERTISE NAME BRANDS.
 WE PAY CASH FOR DISTRESS INVENTORY.
1-888-254-0843



4 Banff Rd.
 (& Hwy. 47)

852-0677

OPEN TO THE PUBLIC
 MON. - FRI. 10 a.m. - 9 p.m.
 SAT. 9 a.m. - 5:30 p.m.
 SUN. 11 a.m. - 5 p.m.

