

THE BIGGEST  
EVENT OF  
THE YEAR

# CANADA-WIDE CLEARANCE

YOUR ONTARIO PONTIAC • BUICK • GMC DEALERS HAVE  
6,356 1998 VEHICLES AVAILABLE NOW. \*\*

# 10

0%†

ONLY  
**1**  
WEEK LEFT



365 DAYS A YEAR



**GMC SAFARI** RUNNING BOARDS NOW INCLUDED

THERE'S PLENTY OF ROOM FOR THE FAMILY EVEN THOUGH WE'VE PACKED THE SAFARI WITH ITS BEST LEASE RATE OF THE YEAR. IT'S ALSO LOADED WITH DEEP TINTED GLASS, AM/FM STEREO CASSETTE, POWER DOOR LOCKS, 190 HP Vortec V6 engine, 4-speed automatic transmission, 4-wheel ABS, air conditioning, 8-passenger seating.

SMARTLEASE

**\$218**

\*a month/  
36 months/  
\$3,900 down payment/  
\$870 freight required

NO SECURITY DEPOSIT

FINANCING UP TO

**48**  
MONTHS

ALSO AVAILABLE, GREAT SMARTLEASE RATES...  
SOME AS LOW AS 1.9%.

PONTIAC BUILT FOR DRIVERS

BUICK

SMARTLEASE  
**\$218**  
NO SECURITY DEPOSIT



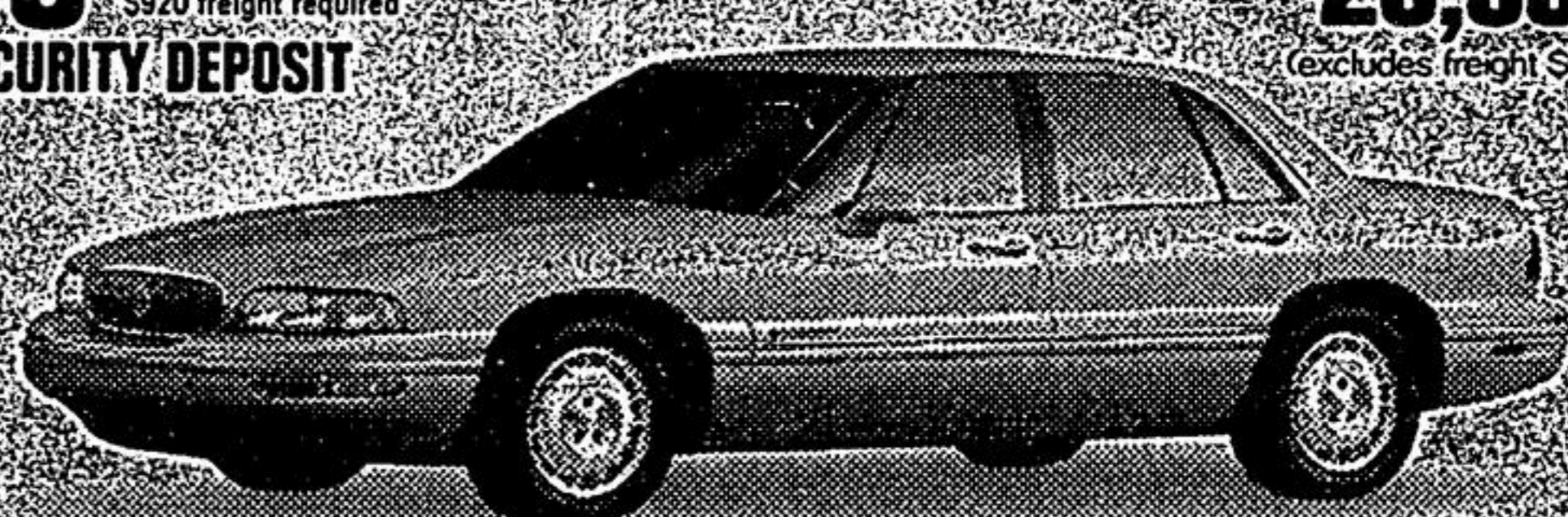
**PONTIAC SUNFIRE SEDAN**

WHO SAYS SEDAN DRIVERS HAVE TO GIVE UP STYLING AND PERFORMANCE INCLUDED IN THIS SPORTY PACKAGE ARE

2.2 litre engine, 4-speed automatic transmission with Enhanced Traction Control, air conditioning, 4-wheel ABS, PASSLock™ theft-deterrent system, Next Generation dual front air bags, AM/FM stereo cassette, tinted glass.

PURCHASE  
**\$17,598**  
(excludes freight \$645)

SMARTLEASE  
**\$348**  
NO SECURITY DEPOSIT



**LESABRE BY BUICK**

LESABRE'S LUXURIES INCLUDE THE COMFORT OF SAFETY AND SECURITY FEATURES BEING BUILT RIGHT IN THIS BUICK COMES WITH 205 HP V6 engine, 4-wheel ABS, Next Generation dual front air bags, remote keyless entry, power windows/locks, tilt/cruise, 6-way power driver's seat.

PURCHASE  
**\$26,998**  
(excludes freight \$920)

**1.9%**

FINANCING IS ALSO AVAILABLE ON BUICK REGAL, PONTIAC GRAND PRIX, PONTIAC TRANS SPORT, BUICK CENTURY, GMC SIERRA, AND GMC JIMMY.

HUGE SELECTION. SEE YOUR PONTIAC • BUICK • GMC DEALER.



The GM Card®



You should know this: \*Based on a 36-month lease for Safari, Sunfire Sedan, LeSabre. A down payment or trade of \$3,900/\$1,500/\$4,675 required. No security deposit required. Total obligation is \$11,748/\$9,348/\$17,203. Annual kilometre limit 20,000 km. \$0.12 per excess kilometre. Other lease options available. †† Freight as indicated. ‡ Licence, insurance, air conditioning, excise, tax and taxes not included. Dealer may sell or lease for less. ‡ Financing on approved GMAC credit only. Example: \$10,000 at 1.9% APR; the monthly payment is \$216.51 for 48 months. Cost of borrowing is \$392.48. Total obligation is \$10,392.48. ‡ Down payment, trade and/or security deposit may be required. Monthly payment and cost of borrowing will vary depending on amount borrowed and down payment/trade. ‡†† Offers apply to select 1998 new or demonstrator models equipped as described and apply to qualified customers in Ontario only (excluding Thunder Bay and Kenora). Limited time offers which may not be combined with other offers. Dealer, trade may be necessary. See your dealer(s) for conditions and details. \*\* According to GM Sales activity report as of September 5, 1998. Numbers will necessarily decrease as sales continue. www.gmcanada.com is a trademark of General Motors Corporation. ©Registered Trade mark of General Motors Corporation. TD Bank licensed user of Mark

