

**INSIDE:** Opinion... 6  
 Infoguide... 12  
 Sports... 15  
 Classified... 17

**5** Mount Albert  
 babysitter charged in  
 infant's death refuses to  
 talk to investigators

**COMMUNITY CALENDAR**

**EVENT:** Art Camp  
**WHEN:** August 11-14, 10 a.m. to 4 p.m.  
**WHERE:** Stouffville public library

**12** The Avengers  
 opens in theatres  
 this week - get the scoop  
 in our InfoGuide

Whitchurch-Stouffville Public Library

ERVING, WHITCHURCH-STOUFFVILLE SINCE 1888

Whitchurch-Stouffville Public Library

# Stouffville Tribune

50 CENTS INCLUDING GST / 20 PAGES

TUESDAY, AUGUST 11, 1998

TO REACH US: (905) 640-2100

**EMPLOYMENT:** *Stouffville lacks industry base*

## Mobile job search coming to town

BY JOAN RANSBERRY  
 STAFF WRITER

A one-stop job shop will roll into town next month.

Stouffville has been selected as one of two York Region sites to house a semi-permanent Mobile On-Line Employment (MOE) service to help people find work.

The on-wheels unit will be set up starting September 11 at the Stouffville Recreation Complex three days a week, twice a month.

The other semi-permanent site is being set up in Sutton.

"Stouffville lacks a base industry and transportation is a critical factor. People need a car to get to a job," said Pat Robertson, executive director of York Region Neighborhood Services.

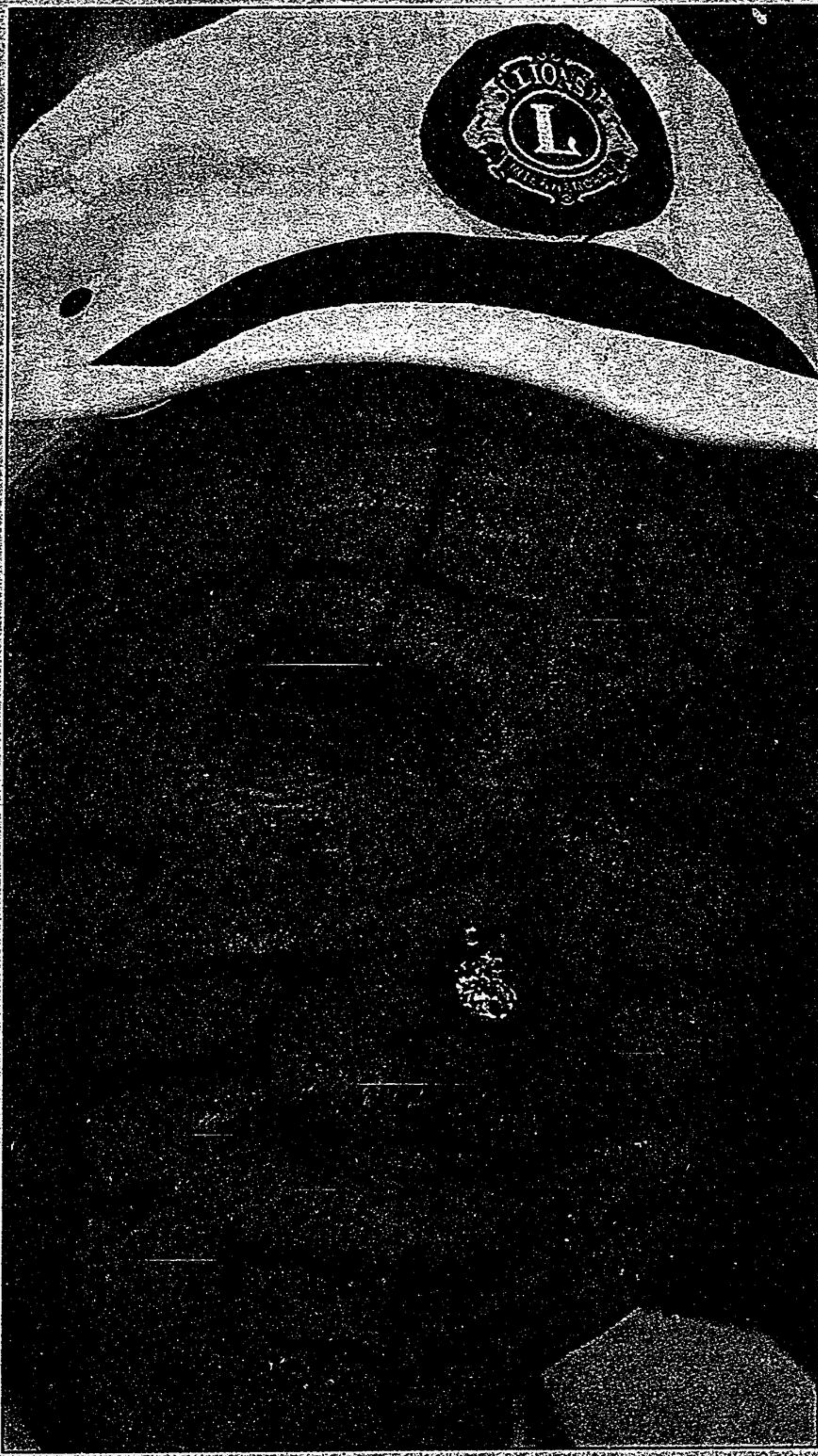
Funded by Human Resources Development Canada and sponsored by York Region Neighborhood Services, the special employment centre has been in York Region for two years.

MOE provides such services as information and referrals, career planning, resume development, access to computers, fax and internet assessment and workshops.

"We have the technology and equipment to develop resumes with clients on site and we can provide additional job search assistance," said Purchase.

MOE is unique. "There's no other like it in Ontario," stressed Purchase. "We meet the people in the community. This is especially helpful to the rural area where transportation is a barrier." Employers in Stouffville, community leaders and members of the public are invited to the grand opening from 1 to 3 p.m.

## HE CAN DO ANYTHING A LION CAN



STAFF PHOTO/SJOERD WITTEVEN

Harold Tillyer, membership chair of the Ballantrae Lions Club, eyes the fun at the annual Steer Roast held at the Ballantrae Community Centre Saturday with his face painted as Spiderman.

## Politicians fight to save Buttonville Airport

*Province to pull \$1.5 million subsidy*

BY MIKE ADLER  
 STAFF WRITER

The Greater Toronto Services Board could be the next place York Region politicians look for money to keep Buttonville Airport open.

The province's \$1.5 million annual subsidy to the airport runs out this year and so far no body - including the Greater Toronto Airport Authority, the province or the federal government - has agreed to contribute even part of the money Buttonville maintains it needs.

But if none of the above will pay, perhaps the GTSB - whose mandate will include economic development - will, said Richmond Hill Mayor Bill Bell.

"I will grant you it's probably quite a tough sell," Bell, who chairs the region's transportation committee, admitted yesterday.

But Bell argued Buttonville, despite its space constraints in Markham, "does fill a real need" and supports economic growth. The private airport is important to businesses across the region, he added.

Meanwhile, the operators of the airport, Toronto Airways Ltd., are betting they can change certain minds with a new study on how closing down Buttonville would affect air traffic across Toronto.

The study by Malone Given Parsons, a Markham planning and engineering firm, will be complete within weeks - in time for a crucial presentation to the authority's board and a meeting with Ontario Transportation Minister Tony Clement next month, said Bob Swayze, the solicitor for Toronto Airways.

"That is something that we hope will impress the GTAA," Swayze added yesterday.

"There's an awful lot of planes that Pearson (International Airport) turns away."

The study will help Toronto Airways make a fresh case, said Markham Mayor Don Cousens, who said Clement's

See AIRPORT, page 8

### STOUFFVILLE CANADIAN TIRE

40" WHITE ROUND TABLE

SUPER SALE  
 PRICED AT ONLY **\$18.99**

Regularly \$24.99

88-0823

AUTO CENTRE

RETAIL STORE

Reas Dixon

Insured Deposit Rates

|            |        |
|------------|--------|
| Daily Rate | 4.250% |
| 1 Year     | 5.350% |
| 3 Year     | 5.400% |
| 5 Year     | 5.525% |

Rates subject to change

GIC's RRSP's Mutual Funds

Life Insurance RRIF's

KEN PRENTICE CFP

Ringwood Dr. Stouffville

642-9507