

HOME AND GARDEN

Use your imagination to create textured effects

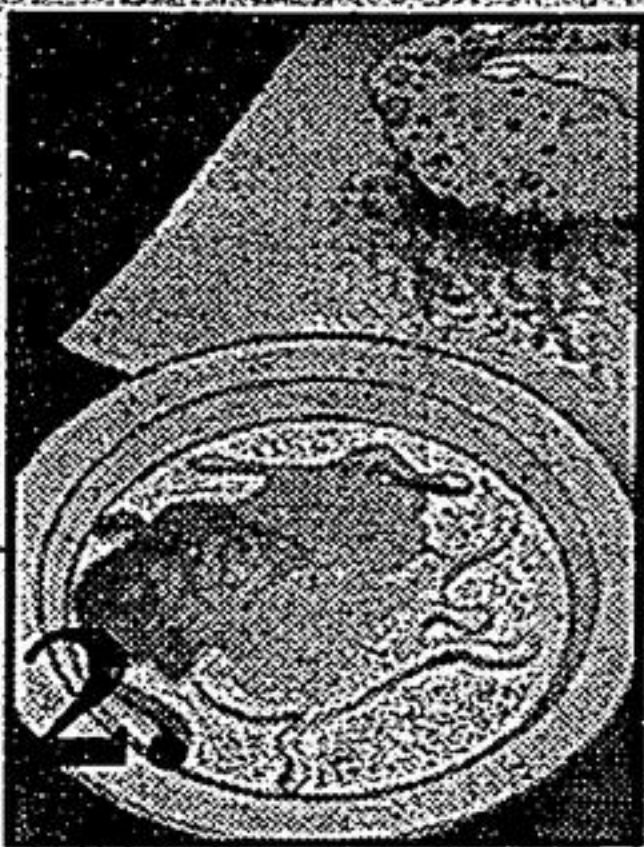
It's easy to create elegant looks using paints and tools found around the house.

Marble Effect

The look of marble can be readily duplicated in your paint finish by using a technique called veining combined with other techniques such as sponge painting.

To create the veined appearance, acrylic extender and acrylic thickener are used alongside the paint to create veins that fluctuate from opaque to translucent. A feather is used in an irregular, trembling motion to apply the veins.

Creating marble finishes can be accomplished with a variety of colour combinations. Before applying the finish, test the paint colours



on a large piece of scrap cardboard. This will help you develop confidence and become familiar with the materials and techniques. Develop a pattern you like by trying different effects as you practice.

1. Apply the base coat of black acrylic or flat latex paint and allow it to dry. Place dark hunter green, medium green, and light blue-green paints in random spiraling lines onto a plate, overlapping the colours.

2. To help keep the colours separate, place spiraling lines of thickener and extender over the paints and then tilt the plate so the colours mingle and marlize. Dip your dampened sponge into the marlized paint and blot it

lightly onto a paper towel to remove the excess paint.

3. Dab the sponge lightly and repeatedly onto the black base coat in an up-and-down stippling motion, turning the sponge for a random pattern.

Allow some base coat to show, and be careful not to mix the paint colours together completely.

4. Pour long pools of white and medium green paint onto another plate. Apply a pool of thickener on one side of the paints, and extender on the other. Run the edge of the

feather through the pools, picking up some thickener, paints and extender on the feather.

5. Place the tip of the feather onto the surface and drag the feather along, turning it slightly to create a veinlike appearance.

Apply the veins in a diagonal

direction, criss-crossing them as desired. Allow the paint to dry completely, then apply several light coats of high-gloss aerosol acrylic sealer.

This article is from the Home Depot's Home Improvements 1-2-3.

When You Can't **BREATHE** Nothing Else Matters

THE LUNG ASSOCIATION

We can help. For more information about Asthma call The Lung Association.

THE BEST MOWERS. THE BEST WARRANTY.

TORO Wheel Horse

When you want it done right.

NO INTEREST FOR 24 MONTHS (24 EQUAL PAYMENTS) IF BOUGHT BY JUNE 21/98

PLATINUM KEY SERVICE FIRST SERVICE & MAINTENANCE CHECK-UP FREE

We offer...
 • assembly
 • fuel and oil
 • testing and adjustments
 • delivery
 • instruction on how to use
 ...all equipment we sell

SAVE \$500.00

On 5xi Series Tractors If Bought Before June 21/98

MARKHAM MOWER
 (905) 294-2644

MAJOR MACKENZIE
 50 ANDERSON AVE.
 16th AVE. N.

LARRY FOCKLER CONSTRUCTION

COMPLETE WATERLINE INSTALLATIONS

Ask us about FOR HIRE • SKID STEER • DIGGING & EXCAVATING • POSTHOLE AUGER & FENCING • FARM & PRIVACY

905-640-2873

RIDGE NORTH Realty PORT PERRY PLAZA
 (905) 985-9777
 FAX 985-9161

Member Durham Region & Lindsay Real Estate Boards
CALL TOLL FREE 1-800-448-1056

PORT PERRY - COCHRANE STREET
 When quality and location make the difference, this home is for you! 2700 sq. ft., 4 bdrms., eat-in kit, overlooks mn. fr. family rm. with w/o to patio, decking & mature treed lot. Living room with fireplace, formal dining area. Large principal rms., economical gas heating, many upgrades. Wood flooring, windows. Come view for yourself! \$289,700

CUSTOM DESIGN AND BUILT
 Numerous upgrades, large greenhouse kit, fam. rm. with fieldstone f/p and w/o to patio, formal dining rm., separate liv. rm., a circular oak staircase leads to 3 large bdrms. and laundry room. Huge master with ens. Bsmt. has large rec/games rm., 3 car garage all on garden size lot. Asking \$279,700. Come view the value here.

"OPPORTUNITY IS KNOCKING"
 Just north of Port Perry. Scenic highway farm with approx. 2000' of frontage. Good updated farmhouse, 102 acres with stream & pond. Good outbuilding set-up for mixed farming. Possible future development as part of the land is in hamlet. Call to view.

PORT PERRY
 When quality, location along with great view of Lake Scugog is for sale, this will be of interest to you! 4500 sq. ft. plus 2000 sq. ft. of in. bsmt. Large principal rms., circular staircase, plastered walls, 4 baths, 3 f/p's, large eat-in kit with w/o to inground pool. Det. workshop plus 3 car garage on over 3 acres. Asking \$369,000. Call 905-985-9777 or 1-800-448-1056 to view.

"DROP YOUR ANCHOR HERE!" PRIME PORT PERRY WATERFRONT
 4000 sq. ft. of finished living area in this spacious tri-level home. Its unique layout is ideal for family and entertaining... family rm., rec rm., fireplace, large mature, treed lot 75' x 238' with sandy shoreline and access to Trent Severn. Huge garage. This home must be seen. Come view for yourself! Priced to this market at \$347,800.

Your One Stop Garden Centre Tree Valley!

Come in and see the large selection of Trees, Shrubs, unusual Topiaries and Bonsai's.

Large Selection of Hanging Baskets bursting with colour 10" \$9.95	Bedding Plants In full colour and many to choose .89¢ Pot \$10. Flat	Geraniums 4" pots Huge Selection of colour \$1.59	New Guinea Sunshine Impatiens Huge Selection \$1.59 (4" Pot)
Minnesota Snowflake Mockorange Regularly \$17.00 This Week \$9.50	Mungo Blue Very Nice 2 Gallon Regularly \$23.00 This Week \$11.95	Alpine Current 60 cm \$7.50 Great For Hedging	Nest Spruce 2 Gallon Full Plants Regularly \$29.00 Now Only \$14.95

Tree Valley Garden Centre Ltd.
 Growers, Landscaping Supplies & Landscape Contractors

Stouffville: 4431 Stouffville Side Road Tel: (905) 640-2020 (just west of McCowan Rd.)
 Richmond Hill: Bayview & Elgin Mills Tel: (905) 884-4247 (southeast corner)