

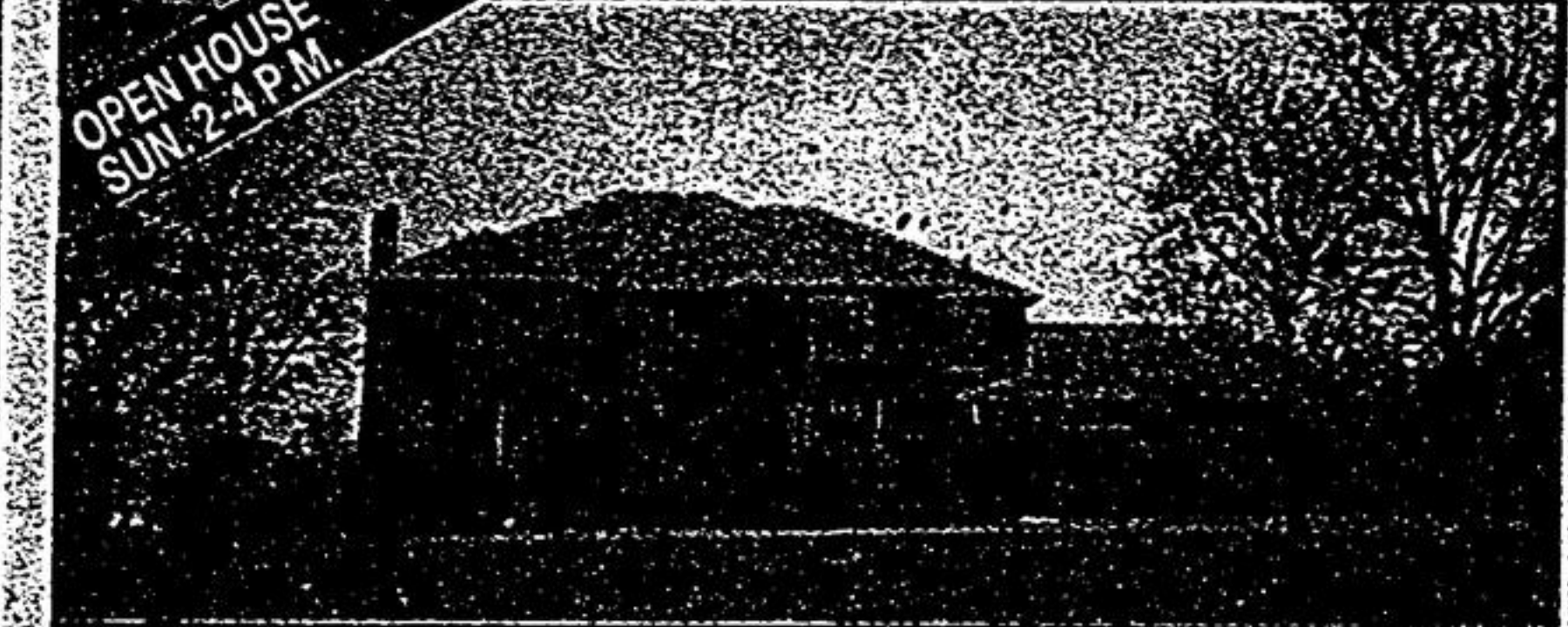
# "#1" IN MARKHAM/UNIONVILLE 1997-98

"THANKS A MILLION", WE'RE #1

"THANKS A MILLION", WE'RE #1

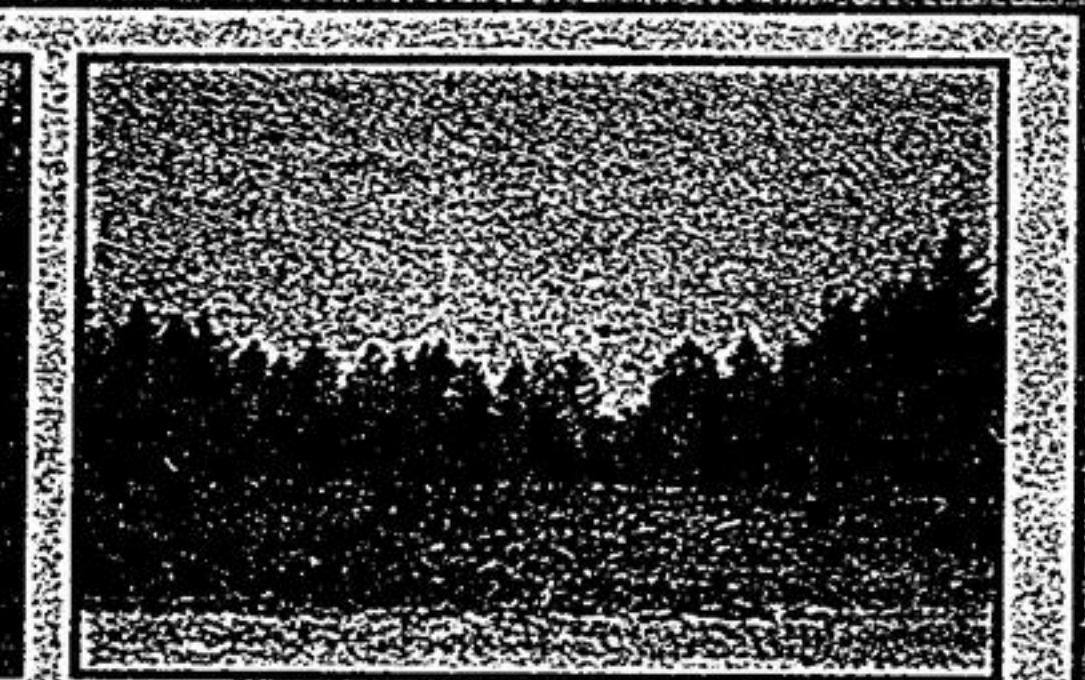
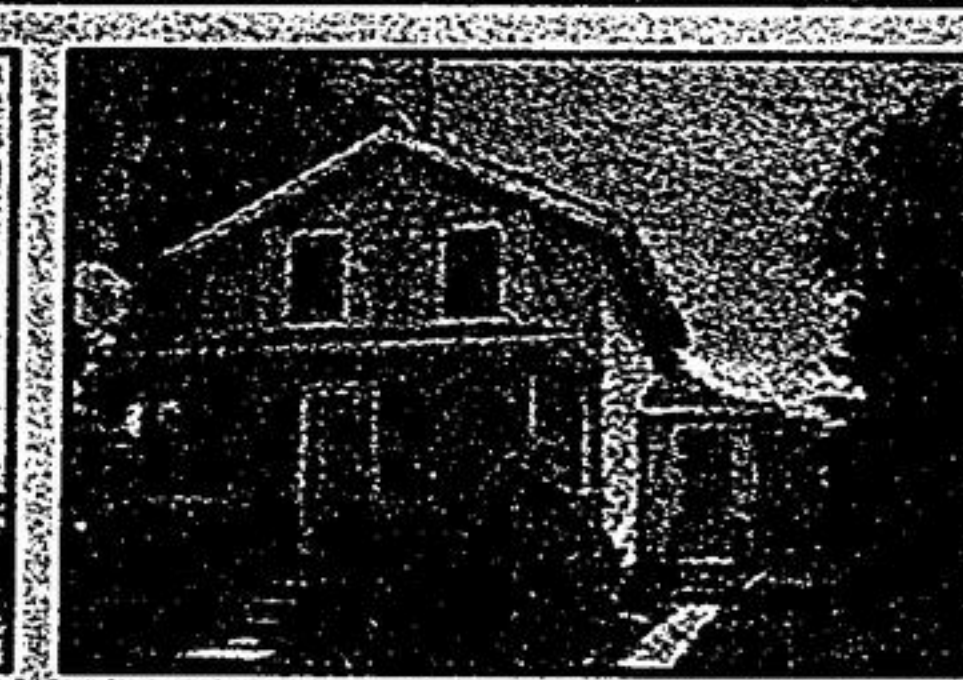


DOUBLETREE CARE



**OPEN HOUSE - UNIONVILLE \$528,000**  
 Where: 7. Cachet Parkway (Warden & Major Mac) When: Sunday, May 31st Time: 2 to 4 p.m.  
 ✓ Custom 5 bdrm. ✓ Tennis court ✓ Inground pool  
 ✓ 3 car garage ✓ Finished basement ✓ Centre hall plan  
 Sylvia Houghton\*, 477-0011.

**YOUR OWN CHATEAU - 18 GLENRIDGE \$1,088,000 - "INDOOR POOL"**  
 ✓ 1+ acre near York Downs Golf Course ✓ 4+2 bedrooms ✓ Hardwood in family room & den ✓ Indoor pool - amazing  
 ✓ Professionally landscaped ✓ Professionally finished walkout basement ✓ Rich Regal ✓ Royal ✓ Marble fireplace in living room  
 Sylvia Houghton\*, 477-0011



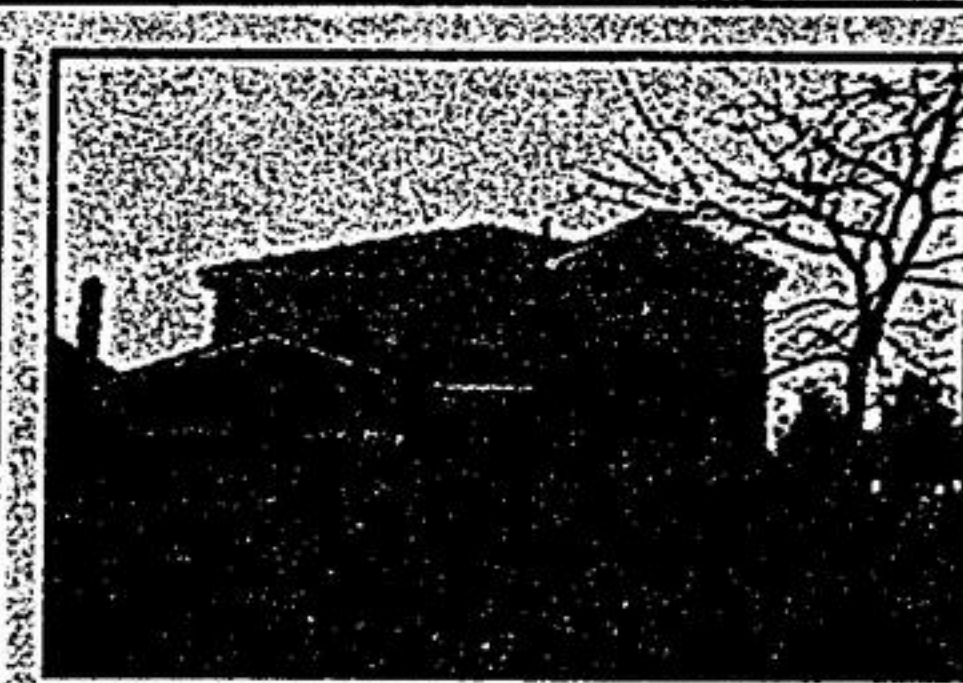
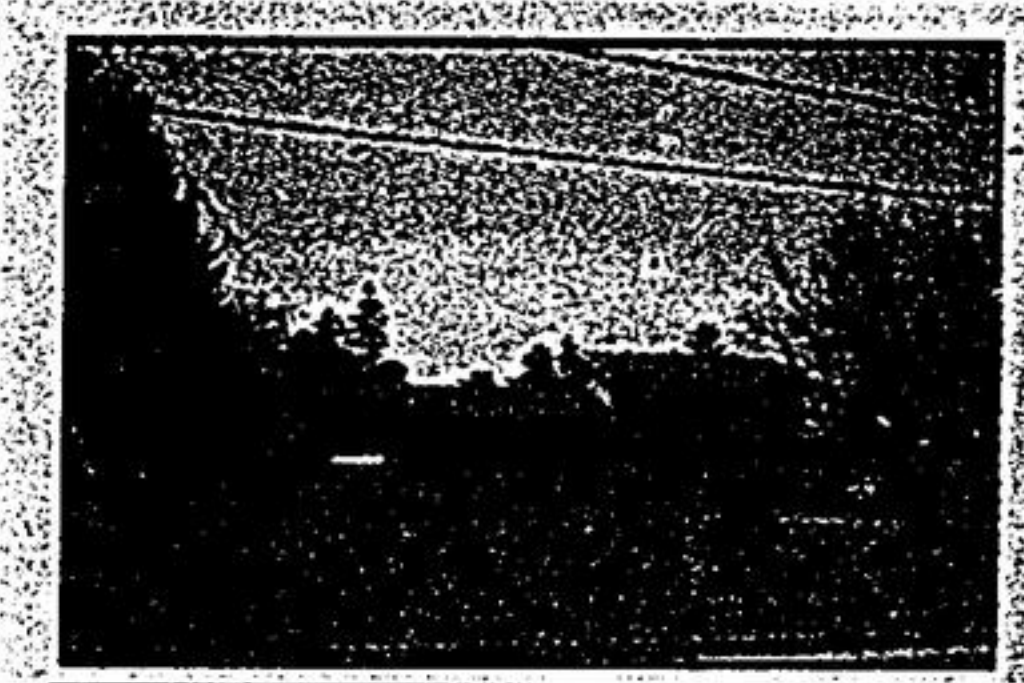
**DOUBLE DUTY - A HOME & AN INVESTMENT! \$278,800 - MARKHAM**  
 ✓ 160 ft. lot - backing south  
 ✓ 4 bdrms. ✓ Master ensuite with sep. shower ✓ Approx. 2500 sq. ft.  
 Walkout fin. bsm. ✓ Corner gas fireplace in fam. rm.  
 Sylvia Houghton\*, 477-0011.

**COME SEE, COME SIGH!! \$269,800 - MARKHAM**  
 ✓ 4 bdrms. ✓ 4 level backsplitt  
 ✓ 160 ft. treed lot  
 ✓ Custom kitchen  
 ✓ 30 ft. fam. rm. with fireplace  
 ✓ Prof. finished basement - A 10"  
 Sylvia Houghton\*, 477-0011.

**A GREAT LOCATION! \$218,800**  
 ✓ Magnificent 150 ft. lot ✓ 3 bedrooms  
 ✓ Fabulous 4 level sidesplit  
 ✓ Fireplace in family room  
 ✓ Sought after area  
 ✓ Bay window in liv. room  
 Sylvia Houghton\*, 477-0011.

**DON'T SUPPORT THE LANDLORD - \$183,800**  
 ✓ O-W-N - perfect 3 bedroom  
 ✓ Country kitchen - large too  
 ✓ Tree-lined street - walk to Main  
 ✓ Snooze & lose - or call  
 Sylvia Houghton\*\* 477-0011.

**"BUILD YOUR DREAM HOME" \$177,000 - DICKSON HILL**  
 ✓ 99' x 224' half acre lot  
 ✓ 4 miles north of Markham  
 ✓ Gorgeous Blue Spruce trees too!  
 Hurry, call  
 Sylvia Houghton\*, 477-0011.



**LOCATION \*\*\* LOCATION \*\*\* LOCATION - \$398,000**  
 ✓ Pomander - the place to be!!  
 ✓ Perfect lot 100' x 215' tree lined  
 ✓ 3 bdrm. sidesplit  
 ✓ Renovators - builders - don't hesitate.  
 Call Sylvia Houghton\*, 477-0011.

**ELEGANCE IN A "BUNGALOW" - \$357,000**  
 ✓ 3 bdrms. ✓ Combined liv. & din. rm.  
 ✓ Open staircase to basement ✓ Approx. 1800 sq. ft. with 2-tiered deck.  
 Sylvia Houghton\*, 477-0011.

**PATTERNS OF PERFECTION - \$348,000**  
 ✓ Gleaming hardwood gracious entrance  
 ✓ Fabulous fam. rm. with "Octagon" window  
 ✓ Huge kitchen ✓ 4 bdrms. ✓ Workshop  
 ✓ Large pool-size lot ✓ Prof. fin. basement w/ w/o to garage.  
 Call Sylvia Houghton\*, 477-0011.

**"VALUE 4 YOU!" \$318,800**  
 ✓ 4 bdrms. ✓ Open staircase to basement  
 ✓ "In vogue" decor in awesome kitchen  
 ✓ Huge master bedroom ✓ 4 1/2 baths  
 ✓ Stairway from basement to garage  
 Sylvia Houghton\*, 477-0011.

**HALLMARK OF SUCCESS \$312,000**  
 ✓ 4 bdrms. ✓ Approx. 3500 sq. ft. A.B. Cairns quality  
 ✓ Open concept kit./fam. rm. ✓ Elegant foyer  
 ✓ Loft with bdrm. skylite & 4 pc. bath  
 ✓ Library ✓ Master bdrm. combined with sitting rm.  
 Sylvia Houghton\*, 477-0011.

Custom Wycliffe on "1" acre of treed perfection with an inground pool.  
 Grand elegant foyer leads to a separate living room with marble fireplace. "Dine with the Doc" in the spacious separate dining room.  
 There are 5 bedrooms, large master with an ensuite to behold!!  
 Fabulous 17 ft. family room with beamed ceiling and stone fireplace, a main floor den and an upgraded white kitchen.  
**SEE YOU SUNDAY, MAY 31st**  
 from 2 p.m. to 4 p.m. at  
 11 Rouge River Circle (off 9th Line and 14th Ave.)  
 Call Sylvia Houghton\* 905-477-0011.

**OPEN HOUSE SUNDAY 2-4 P.M. - 11 ROUGE RIVER CIRCLE (9th/14th Ave.) "TREES, TRILLIUMS, TRANQUILITY!!" - \$519,000**

