



TOP PRODUCER! FREE EVALUATION!
INTOWN BUNGALOW! \$194,900
 Established neighbourhood! Well built 3 bdrm! Country kitchen. Finished 2 bedroom in-law apartment!
 Kim Reesor*, 905-640-1200.



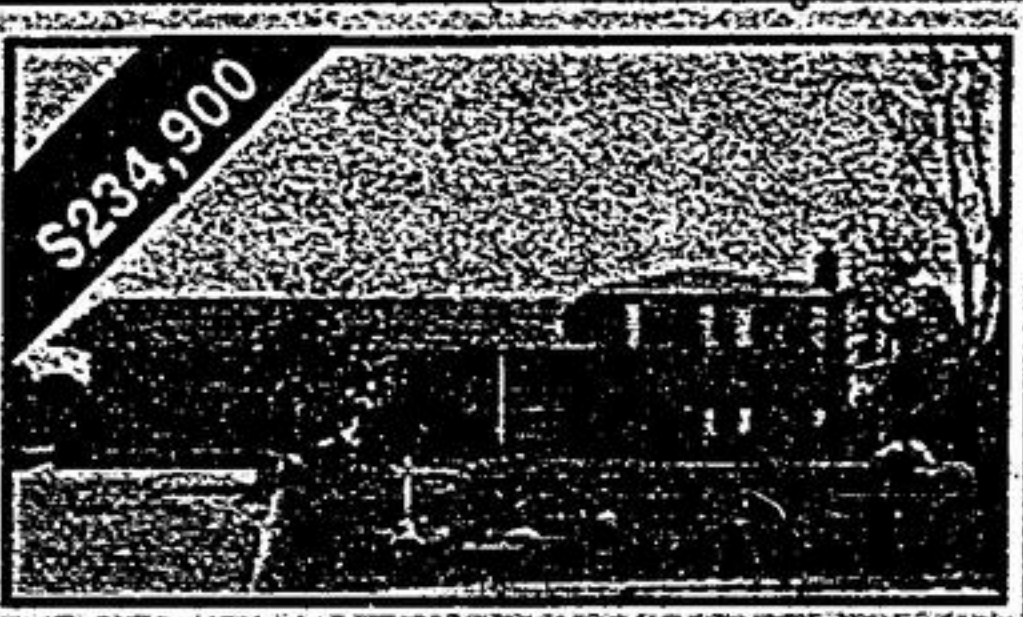
\$219,900
BACKSPLIT! BACKS TO PARK
 Spotless thru-out. Large kit. overlooks fam. rm. / f/p. 4 bdrms. updated bath. hardwood flrs. 2 car garage!
 Kim Reesor*, 905-640-1200.



15 ACRES
PRIVACY! WALKOUT BASEMENT!
 Custom built bungalow! Master bedroom ensuite! Fin. rec. rm. / wet bar. 2 fireplaces! Several outbuildings! Great location!
 Kim Reesor*, 905-640-1200.



MARKHAM
BEGINNERS LUCK - \$187,500
 Move right in! Spacious 3 bdrm. Master bdrm. ensuite. His & her closets. Mn. flr. fam. rm. / f/p. Walkout to deck & private yard! Close to all amenities!
 Kim Reesor*, 905-640-1200.



\$234,900
SOUGHT AFTER LOCATION!
 Sprawling sidesplit features hardwood flrs., renovated kitchen / w/o to deck & large lot. 5 bedrooms, mn. flr. fam. rm. / f/p. close to school & park.
 Kim Reesor*, 905-640-1200.



10 ACRES
19TH AVENUE! \$639,900
 Custom built bungalow / finished walkout basement! Large principal rooms! Borders the Rouge River. Great location.
 Kim Reesor*, 905-640-1200.



25 ACRES
SPRAWLING SIDESPLIT!
 Custom built - 33' fam. rm. / stone fireplace! Country kitchen! Games rm. / f/p. / wet bar. 2nd kit. Hardwood & ceramics. Oversized garage. \$499,900.
 Kim Reesor*, 905-640-1200.

Congratulations to Mr. & Mrs. Sebastiano Coppa
Winners of \$50.00 Gift Certificate



\$157,900
GREAT VALUE - \$157,900
 Fabulous floor plan. Main walkout to patio. 2 baths. 3 bedrooms. 2 parking spaces. Spotless!
 Kim Reesor*, 905-640-1200.



\$159,900
JUST LISTED - \$159,900
 Renovated top to bottom. Finished basement. Country kitchen. Pine floors. Extensive landscaping. Move right in!
 Kim Reesor*, 905-640-1200.



\$323,900
LOT LOVERS PARADISE
 Premium 3/4 ac. prof. landscaped lot. 3 car garage. Vaulted ceilings w/skylights. Sun room. Walkout to deck. Spotless!
 \$323,900. Call Joseph Gallo*.



\$161,900
EASY LIFESTYLE - BEAUTIFUL TOWNHOUSE
 3 bdrm. condo townhouse with second flr. laundry. Open concept kitchen with southern exposure. Central air. Appliances included. Call Elaine Kalmbach*, 905-640-1200.

\$145,900 EACH
BUILDERS - BUILD 2 ESTATE HOMES ON 2 NINE+ ACRE PARCELS!
 South Uxbridge upscale country neighbourhood. Gas at lot line, paved road. Mostly level land. would suit horse farm. Call Elaine Kalmbach*, 905-640-1200.



\$498,888
COME OOH AND AAH OVER THIS STUNNING REPRODUCTION HOME!
 This is one you have to see to believe! Backing to Lampton Pond, this 3 acre property is the appropriate setting for perfection. Elaine Kalmbach*, 905-640-1200.



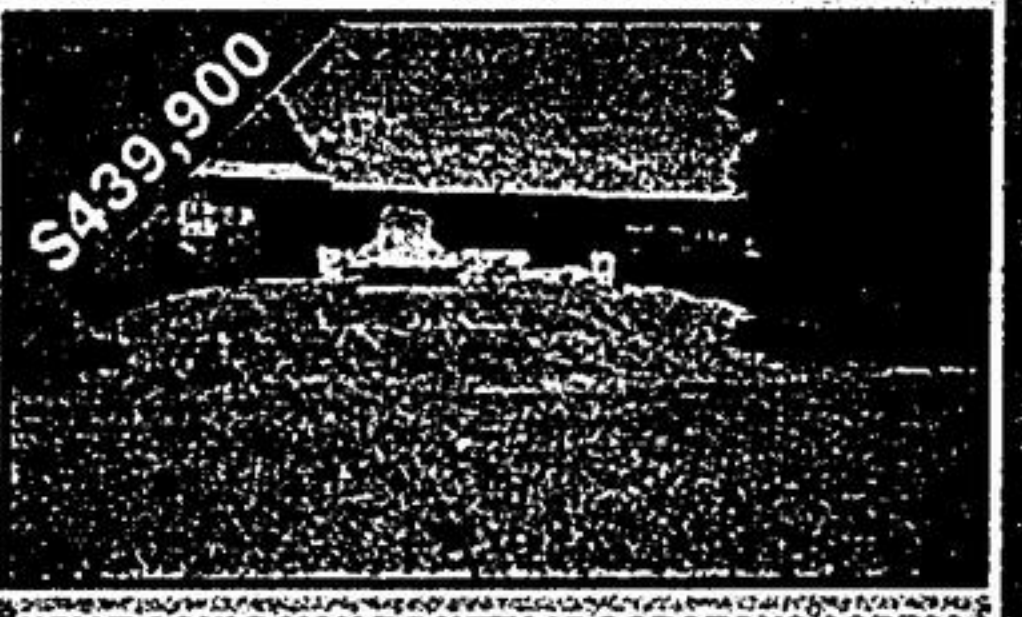
\$249,900
BUNGALOW WITH CLASS!
 Main floor family rm. w/fireplace, new broadloom in f.r. & living rm. New oak strip flooring in dining area, ensuite off master, partially fin. basement with walk-up to garage. See with Elaine Kalmbach*, 905-640-1200.

HAVE ANY BRIGHT IDEAS FOR A COMMERCIAL USE PROPERTY?

\$399,900 EACH
 Presently zoned for vehicle sales / service. Other uses will be considered. Hwy. frontage in fast-growing Uxbridge. 3000 sq. ft. bldg. sep. sales office, gated / fenced pkg. Call Elaine Kalmbach* to book your showing. Private showing website: <http://members.tripod.com/~ejkalmbach>.



SOLD SOLD
SOLD - 97.5% OF LIST PRICE
 95 Manitoba Street, Stouffville. Call me for a complimentary evaluation. Elaine Kalmbach*, 905-640-1200.



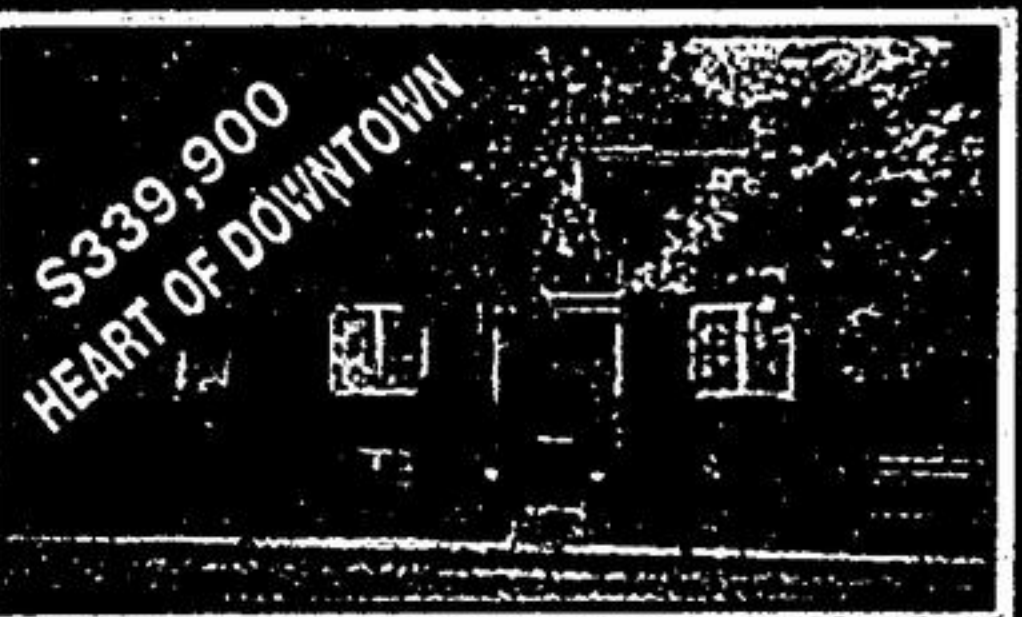
\$439,900
WHAT COULD YOU DO WITH 25 GORGEOUS ACRES?
 This property is spectacular and close to Stouffville! Hardwood bush paddock, rolling trees, dotted meadows. 5 bdrm. home, bar. See with Elaine Kalmbach*.



\$749,000
ONE OF A KIND 104 ACRE ESTATE!
 Over 7400 sq. ft. of living space in this 6 bdrm. mn. home with pine plank flrs., multiple f/p's, beautiful landscaping & much more plus 3 bdrm. bung. & fantastic views. Have a look with Wayne Keeler, 640-1200.



QUIET COURT
SIZZLING SIDESPLIT PLUS
 4 levels + main flr. family add on + 4 bdrm. + 2 baths + 2 gas fireplaces + CAC + eat-in kitchen + dbl. drive + large pie lot.
 \$227,900. Gail D. Cavill*



\$339,900
HEART OF DOWNTOWN
WORK & LIVE IN 1 LOCALE!
 Custom beauty. Orig. wood parour, lg pool & patio, dbl. gar. 4 bdrms. 2 reno baths, sep. ent. to offices. Some prof. use. R3 zon. Gail D. Cavill*, 640-1200.



\$398,900
NEW LISTING - THE ULTIMATE LIFESTYLE!
 Custom bungalow. Executive 4.8 acre estate area off Bethesda. 4 bdrms. CAC, CVAC, skylights, w/o bsmt., spring fed pond. Gail D. Cavill*, 640-1200.

WANTED - I HAVE BUYERS
 I have firm buyers for:
 #1) A 3 or 4 bdrm. home in Stouffville up to \$249,900.
 #2) A 3 bdrm. home within a short walk to high school.
 Gail D. Cavill*



NEW LISTING
"HOT" NEW LISTING!
 Pride of ownership shows in this home. Eat-in kitchen with pine cupboards, 2 baths, 3+1 bdrms, fin. rec. rm. / wet bar. Many, many extras. To view call Valerie Infurnari*



VALUE + LOCATION
 Space to grow, enjoy this 4 bdrm. + main flr. fam. rm. with f/p. w/o to private fenced yard & mature landscaping. Plus much more. To view call Valerie Infurnari*

INVESTMENT PROPERTY
 \$449,000. Almost 10 acres with possible 5 lots of approx. 1-1/4 acre each plus a 3 bdrm. home also on approx. 1-1/4 acre lot. Town water & gas on lot line. Just listed. Ross Gallo*

BALLANTRAE
 Close to school. 10 acre treed land with 628' frontage. Possibly can be connected with town water & natural gas. Building permit & survey available. Only \$329,000. Ross Gallo*, 640-1200.