

Don't let your ladybug investment just fly away

Each day brings new signs of spring: the first bulbs — crocus, iris reticulata and perennials, primula, draba, and pulmonaria; the return of the bluebirds and swarms of ladybugs inside the kitchen

and bathroom window.
I remember that warm day last October when there were masses of ladybugs crawling on the warm southwest outside walls of the house. I prided myself that my garden had so many natural insect predators. That was until they emerged from their winter hibernation in all the cracks and crevices into the house, on to my toothbrush and into my teacup.

Lisa Charlton wrote to ask if the bugs that look like ladybugs but have more spots are also beneficial. Actually, there are 160 species of ladybugs in Canada. They are oval in shape and their colour can range from yellowish-red to bright red or pink with black markings in various numbers.

They primarily eat aphids, whiteflies, spider mites, mealybugs and scale.

One unwelcome member of the group is the Mexican bean beetle, which destroys bean foliage. It is yellowish-brown with 16 black spots on the wing covers.



Let's Get Growing

Marjorie Mason Hogue

They overwinter as adults in hedges, under leaf litter, rocks and bark, and in crevices in buildings. During the winter they remain inactive, living off body fat, and do not feed during this time.

Once spring arrives, the adults emerge and search for food. Each female lays from 200 to 1,000 eggs, depending on food availability. The yellowish eggs are deposited in clusters of five to 50 on the underside of leaves near a food source. They hatch in three to five days into dark coloured alligator-shaped larvae. As they grow, they develop markings according to their species. Each larvae goes through three moults

before it pupates, and during that time eats 200 to 300 aphids. The entire cycle from egg to adult may take about one month and there are one to two generations per year. Adults are quite voracious and capable of eating 50 aphids per day.

In the last few years ladybugs (ladybeetles or ladybird beetles) have been offered for sale as an alternative to insecticides. The difficulty is that if they are collected while hibernating, as soon as they are released they must fly to burn off their winter fat before they can feed again. So your purchase literally flies away.

Meanwhile, if you have swarms of ladybugs indoors, gather them up and take them outside where they will be ready to wage war on the small soft-bodied insects that will attack our plants in the months ahead.

Send your questions or comments to: Let's Get Growing, c/o Marjorie Mason Hogue, Uxbridge Tribune, 24 Toronto St. N. Unit 2, L9P 1E6.

Flyer Inserts For Thursday, April 9, 1998

Sears - 10% off card*
The Bay*
Living Lighting*

Molly Maid*
Bloomington Landscaping*

*Selected areas only

WE'RE FIRST IN DISTRIBUTION
We've delivered 13,040,201 flyers door-to-door, so far this year.

For further information on how we can deliver your flyers call:

Melissa or Ruth at (905) 640-2100

Stouffville
THE TRIBUNE

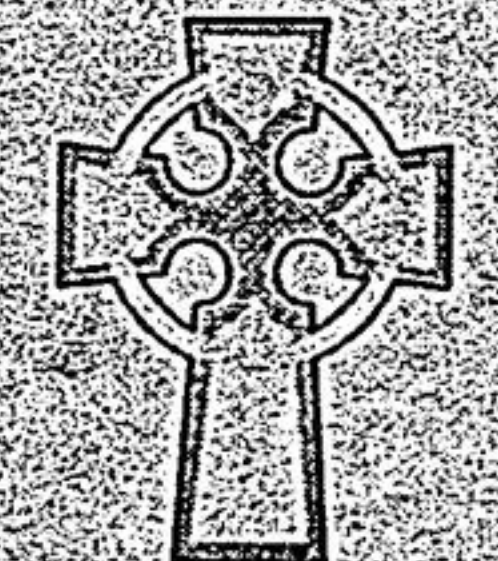
FLYER DELIVERY

HOME DELIVERY Delivered home to home for only 3.5¢ per piece depending on quantity.	BUSINESS DELIVERY Delivered business to business for only 6.5¢ per piece. Businesses only.
---	--

Not only can we deliver your flyers anywhere in Markham, Unionville, Stouffville, Uxbridge and surrounding areas, we can also compose and print your flyers at very competitive rates. For more information call:

Linda MacFarlane @ 905-294-8244.

ECONOMIST & SUN/THE TRIBUNE
SERVICE, DESIGN, PRINTING, DELIVERY, PRICE! YOUR ONE STOP ADVERTISING



Khalid Usman
Councillor, Ward 7
extends to the Members
of the
Christian Community
Best Wishes for a
Happy Easter

You're invited.

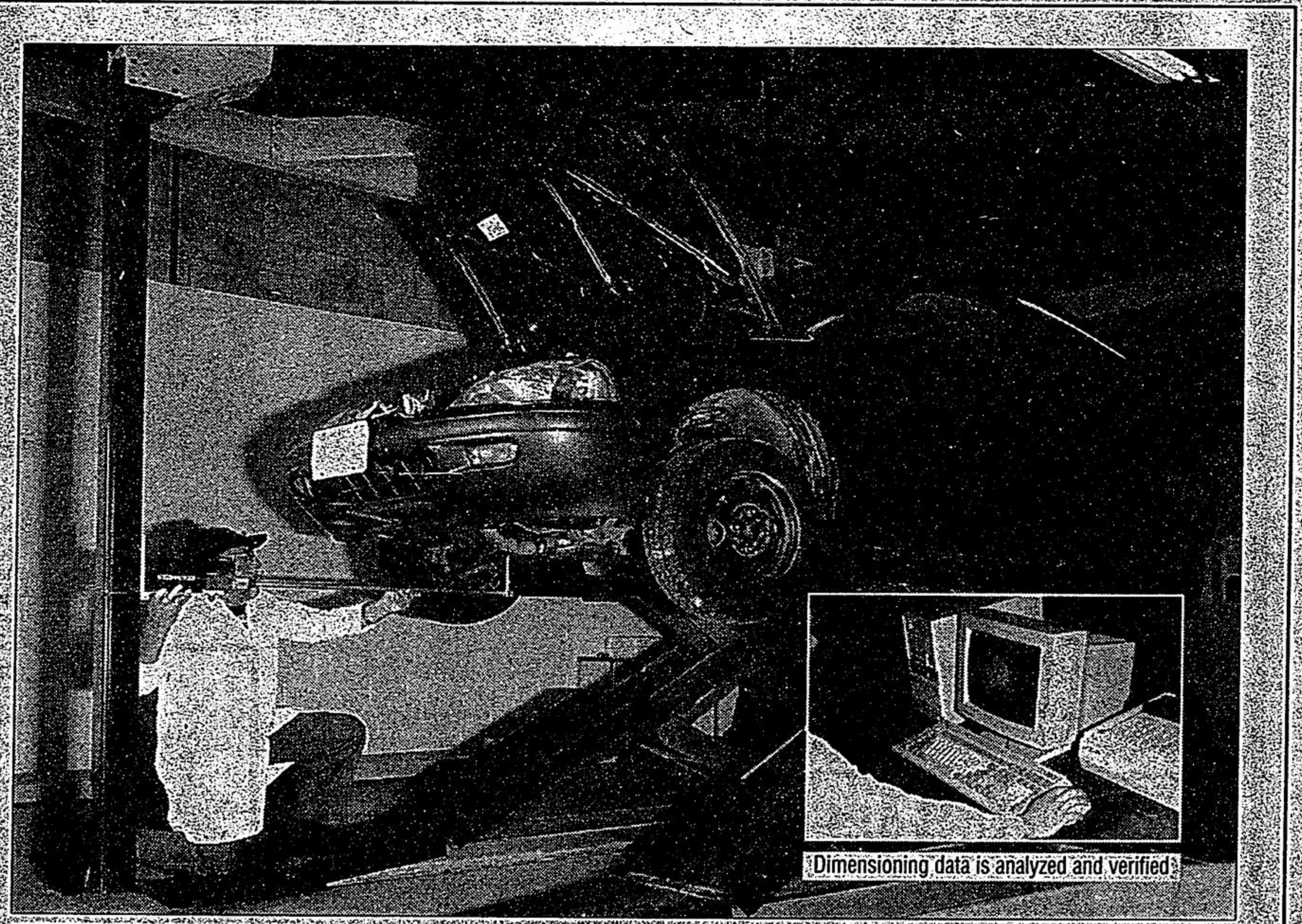
Paula Lishman and staff extend a personal invitation to you as a preferred customer, to attend our Spring Sales event. Present this card anytime between Saturday, April 4, 1998 and Sunday, May 10, 1998 and receive up to 50% off your purchase of a Paula Lishman Creation.

Designer Dindsay Godfrey will be displaying her exclusive jewellery on May 8 & 9, 1998.

PAULA LISHMAN'S
Knit Furs

classic
LISHMAN'S
A gallery of functional art

158 QUEEN ST. PORT PERRY, ONT.
(905) 985-0574
Fax (905) 985-1917

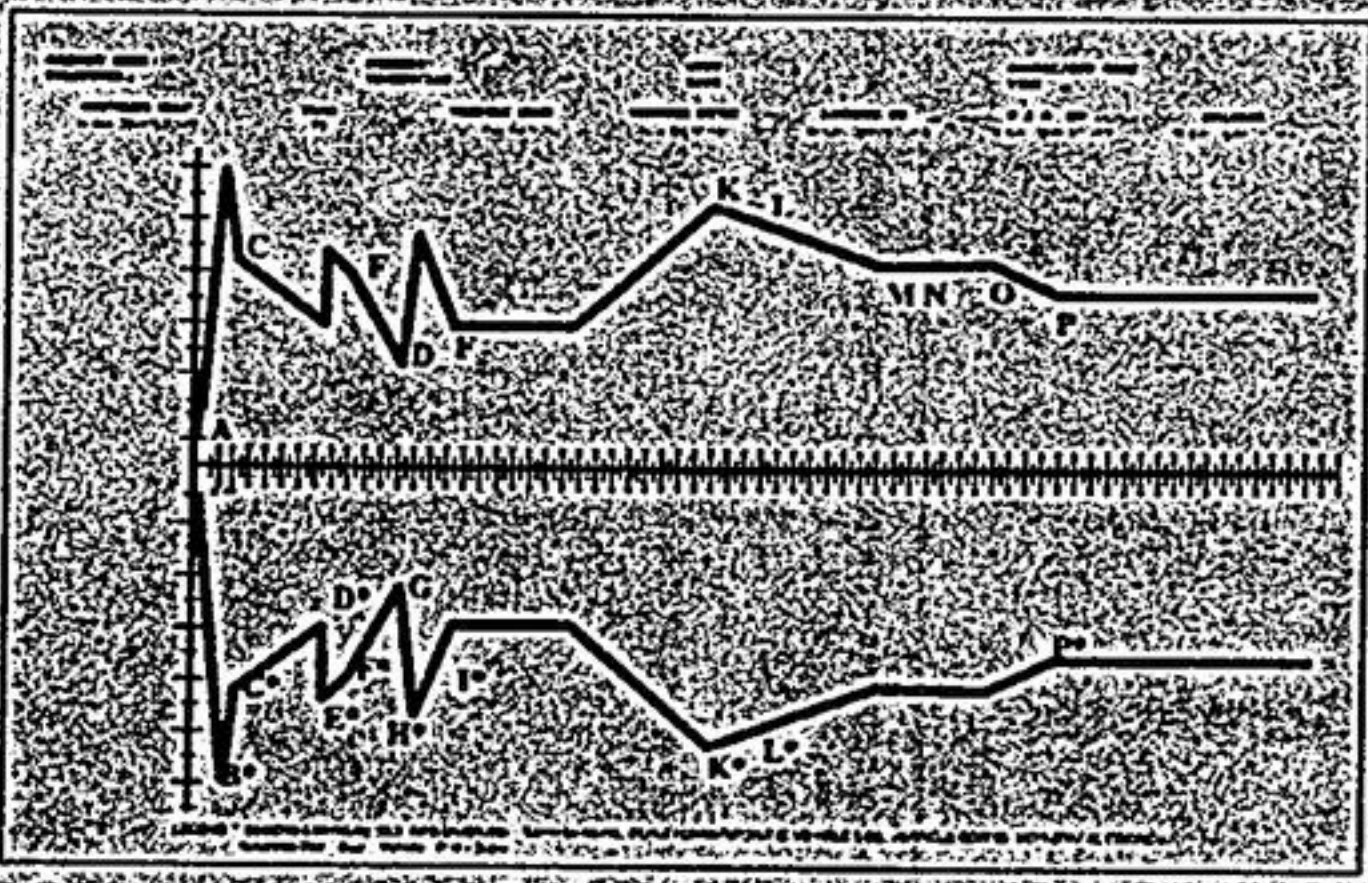


SOME DAMAGE YOU SEE ... SOME YOU DON'T

Why gamble with your safety? Hidden damage due to an improper collision repair may cause your vehicle to put you in a dangerous situation.

Now you can get the facts about your car with the CADSCAN Computer Aided Dimensioning Scanner. This service is available through an independent network of Scanning Dimension Centres.

Scanning your vehicle is fast, easy and affordable.
The CADSCAN System dimensions a series of predetermined points on your vehicle and a computer print-out is generated, providing you with a verification of the scan.



Customer is supplied with a dimension print-out



Protect your investment from improper collision repairs and potential handling problems or have a used car verified before you buy by having the vehicle's dimensions scanned at a Scanning Dimension Centre near you.

For information on a location near you call our HOTLINE:
1-800-918-9838
DIMENSIONING FOR A SAFER FUTURE
Cadscan System developed with assistance from The National Research Council

TASC LIMITED 2001 Thickson Rd., S., Unit 17, Whitby, Ontario L1N 6J3