



Whitchurch-Stouffville Public Library

# THE TRIBUNE



Signy Lawson

**MONEY CONCEPTS**  
The Money Management People  
642-4540

**ResDion FINANCIAL SERVICES**

**Insured Deposit Rates:**

Daily Rate	4.25%
1 Year	4.85%
3 Year	5.20%
5 Year	5.40%

Rates subject to change

GIC's • RRSP's • Mutual Funds  
Life Insurance • RRIF's

**KEN PRENTICE, CFP**  
Ringwood Dr., Stouffville  
642-9507

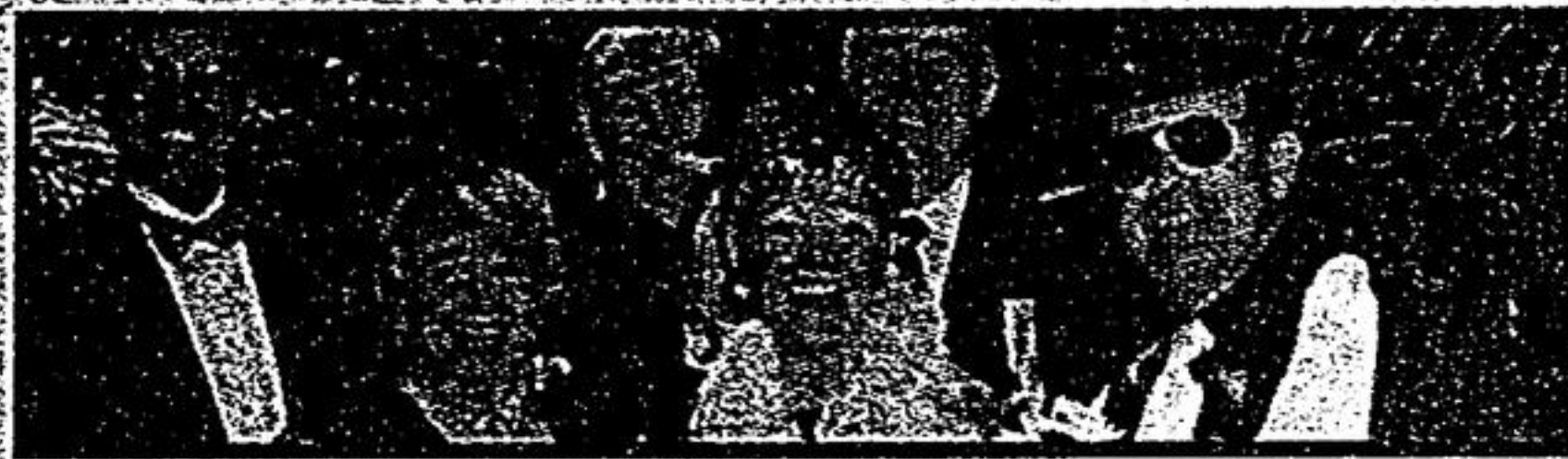
Vol. 110, No. 27

Tuesday, April 7, 1998

28 Pages 50¢ (GST incl.)

A Metroland Publication Serving Whitchurch-Stouffville Since 1888

Find out what's  
going on  
**CALENDAR p. 6**



**Best Dressed  
Bag Lady p.4**

## Tribune earns three awards from OCNA

TRACY KIBBLE  
Editor

The *Stouffville Tribune* was honoured Saturday night in three different categories for outstanding newspaper quality.

The *Tribune* won first place honours in the Community Service category for the annual Art in the Park festival held the third weekend in July in Uxbridge.



*Stouffville Tribune* Editor-in-Chief Andrew Mair accepts the first place OCNA award for Community Service.

Beating out 26 other newspapers for this coveted award, *The Tribune* shone in this area, one the judges called the most "difficult to select."

In the judge's words:

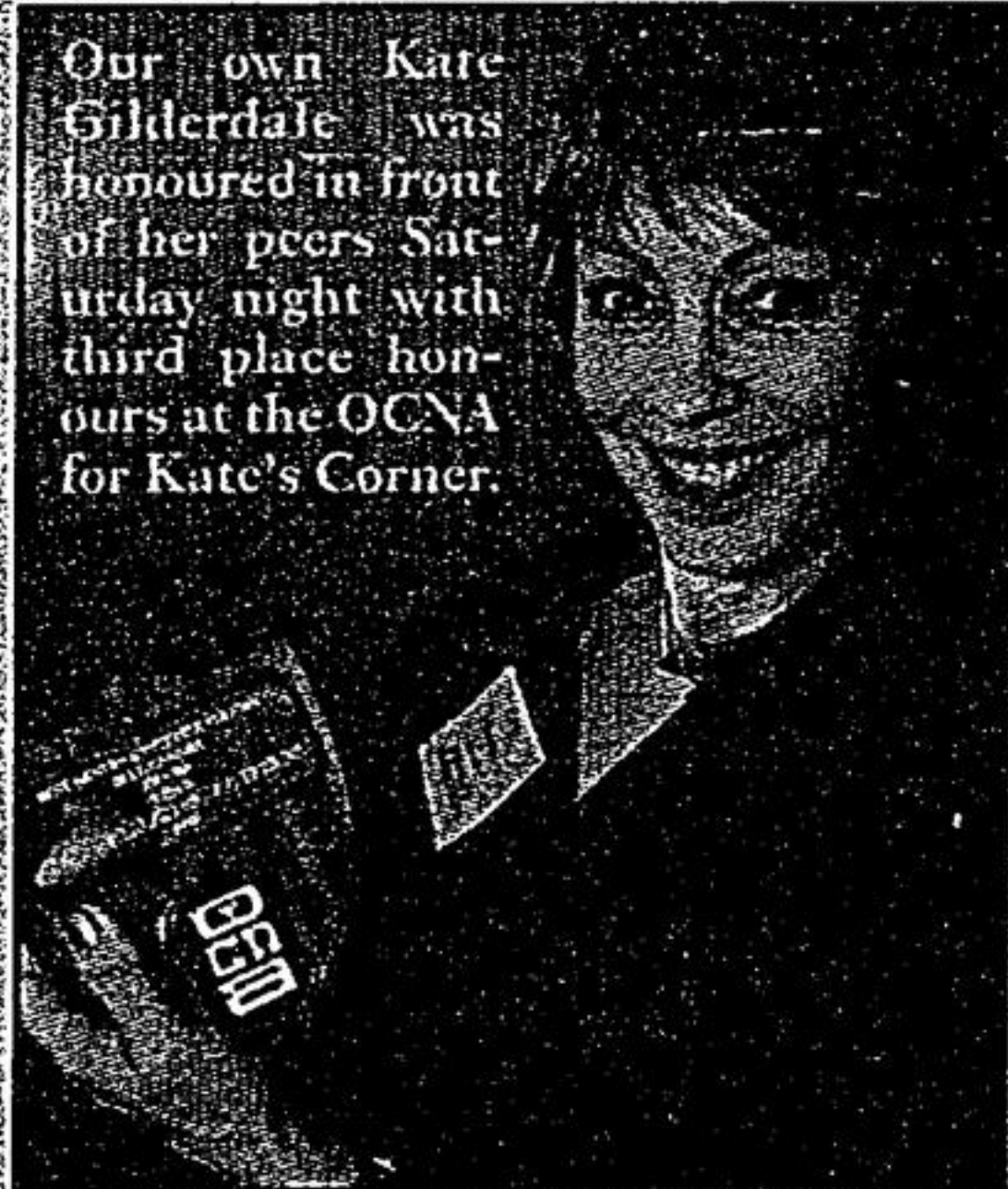
"The *Tribune's* project won in the end because of the amount of time which was obviously dedicated to hosting an Art in the Park festival... the event required much time and planning and a significant amount of volunteer work by the newspaper staff. Congratulations to *The Tribune* for their hard work."

The *Stouffville/Uxbridge Tribune* also won an impressive second place in the General Excellence category in its circulation class of 12,500-24,999 for its "good community focus."

Stouffville's other community newspaper, *The Stouffville Sun*, won first in the smallest circulation class of 1,999 and under.

Last, but certainly not least, our long-time columnist Kate Gilderdale's (Kate's Corner) earned a commanding third place for Best General Interest Column, beating out 62 other writers across the province.

The judge said of Gilderdale's *Kate's Corner* is one of my favourites, and Kate Gilderdale is definitely a person I would like to meet. She is able to put into fine prose the everyday issues (or problems) facing the baby boomer generation that must now "fess up to the fact that most of us are getting longer in the tooth, but of course much wiser. Her column is just plain fun to read."



Our own Kate Gilderdale was honoured in front of her peers Saturday night with third place honours at the OCNA for *Kate's Corner*.



'EGGS'-CELLENT TREE: Karen Healy puts the finishing touches on her Easter Egg tree at her booth at the Goodwood Community Centre last Saturday during the Pearls and Lace giant craft show.

Photo by SJOERD WITTEVEEN

## Testa senior's building back on track

JOAN RANSBERRY  
Staff Reporter

The 85-unit seniors' apartment building slated for downtown Stouffville is, once again, a go.

Construction should get underway at the Main Street-Duffin's Creek site this summer, developer Gino Testa told *The Tribune*.

Testa was expected to outline his plan to Whitchurch-Stouffville Council last night.

The \$10-million housing complex, complete with a lounge, chapel and cafeteria, was put on the back burner last year when Testa failed in his bid to get financial backing.

While financiers have had no trouble supporting condominiums, they're shy when it comes to backing rental properties, Testa said.

"Nobody cares about rentals and nobody cares about seniors. Everybody wants condominiums. It's been discouraging," said Testa. However, in the past few months, Testa has made gains regarding the financing. "I hope to get going this summer," he said.



YEARS 1922-1997

Serving Canadians for 75 years

### STOUFFVILLE CANADIAN TIRE Betty Crocker 2 Slice Toaster

Regularly \$14.99

**ON SALE FOR ONLY \$9.99**

#99433 Shop Early For Best Selection

**AUTO**  
Monday-Friday  
10am-6pm

**CENTRE**  
8:00am-8:00pm

**RETAIL**  
Monday-Friday  
10am-6pm

**STORE**  
8:00am-8:00pm