

Auto Express
Jaguar
 REPAIR SPECIALIST
 172 RULOCK DRIVE UNIT 311
 MARGHAM
 471-8660

THE TRIBUNE

Weekender

Saturday, March 14, 1998
 Vol. 14, No. 11.

36 Pages.
 50¢ (GST incl.)

Sutton
 GROUP
 Town and
 Country Realty
 Ltd.
 640-0888

A Metroland Publication Serving Whitchurch-Stouffville Since 1888

Now is the winter
 of our discontent
 P. 8



	c	r	o	s	s	p.
		w	o	r	d	7

The heat is on...
 see page 4



Latcham one of few of its kind

Editor's Note:
 With the closing of the Latcham Gallery announced this week by the Whitchurch-Stouffville Public Library Board, correspondent Kate Gilderdale takes a look back at the history of this community facility. Read The Tribune next week for insightful articles regarding the gallery.



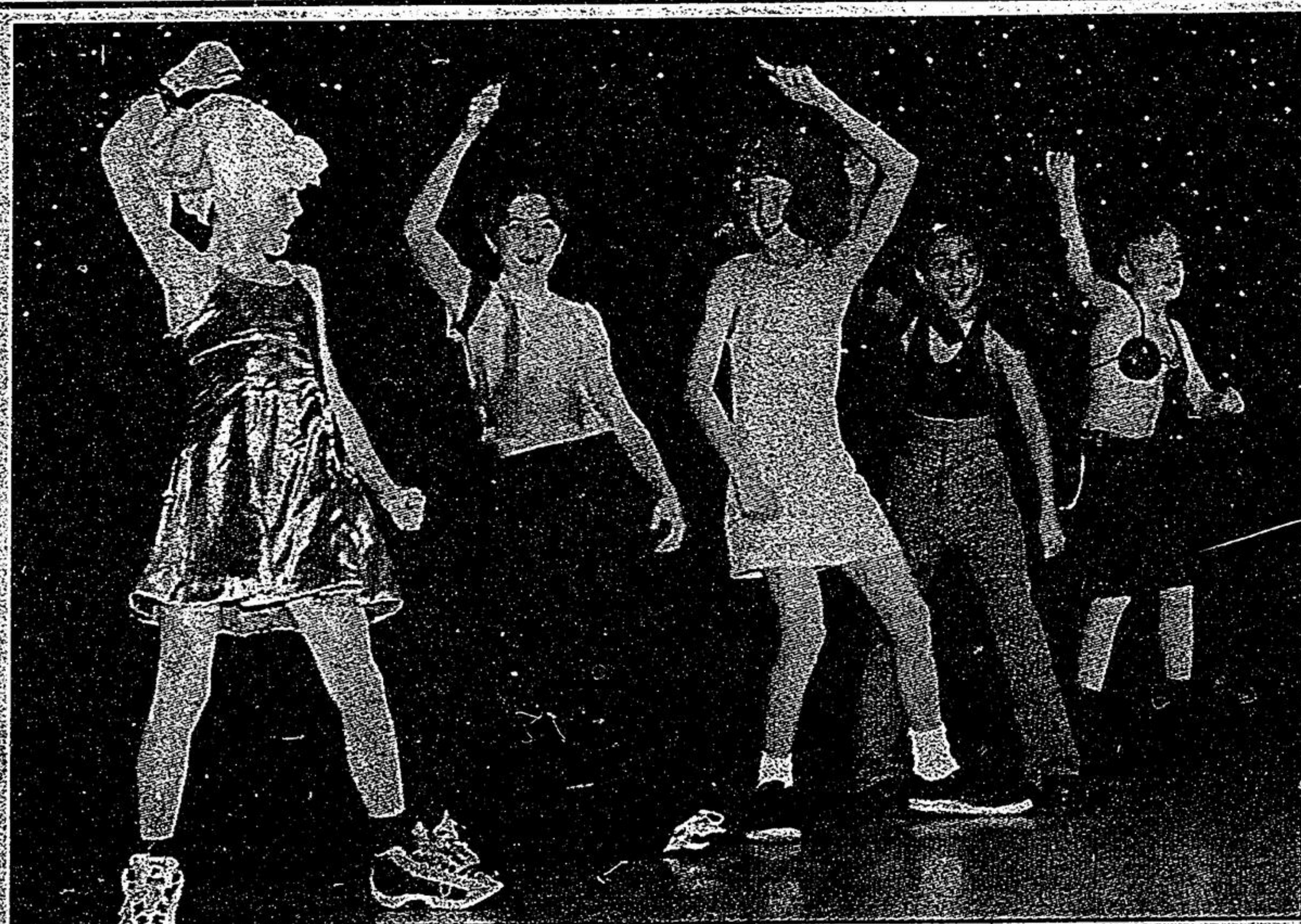
SPECIAL REPORT
 Kate Gilderdale

Library Board Tuesday night was established in 1979, in large part through the efforts of nationally acclaimed Uxbridge artists

Ron and Lynda Baird. Originally run by volunteer directors, the gallery employed Vanessa Perry, a former volunteer, as director in 1988 on a permanent, part-time basis. Bud Sanderson, who was a member of the board when the current library

The Latcham Gallery, whose sudden closure was announced by the Whitchurch-Stouffville

■ Please see page 3 ■



ADDING A LITTLE SPICE: Singing and Dancing to *Spice up Your Life* are Glad Park Public School students Justin Croker, Logan Jennings, Travis Kayum, Marcus Makinen and Tommy Yule. The students were taking part in the school's Talent Show '98 Thursday.

Photo by STEVE SOMERVILLE

Mobility transit looks to expand; needs \$25K

JOAN RANSBERRY
 Staff Reporter

It takes \$50,000 a year and 14 volunteers to make sure local disabled residents get door-to-door transportation service, council has been told. Whitchurch-Stouffville Mobility Transit is a vital service—about 500 people have registered to use the service since its inception four years ago. Last year, the transit program logged more than 3,000 trips. Mobility Transit makes sure local residents in

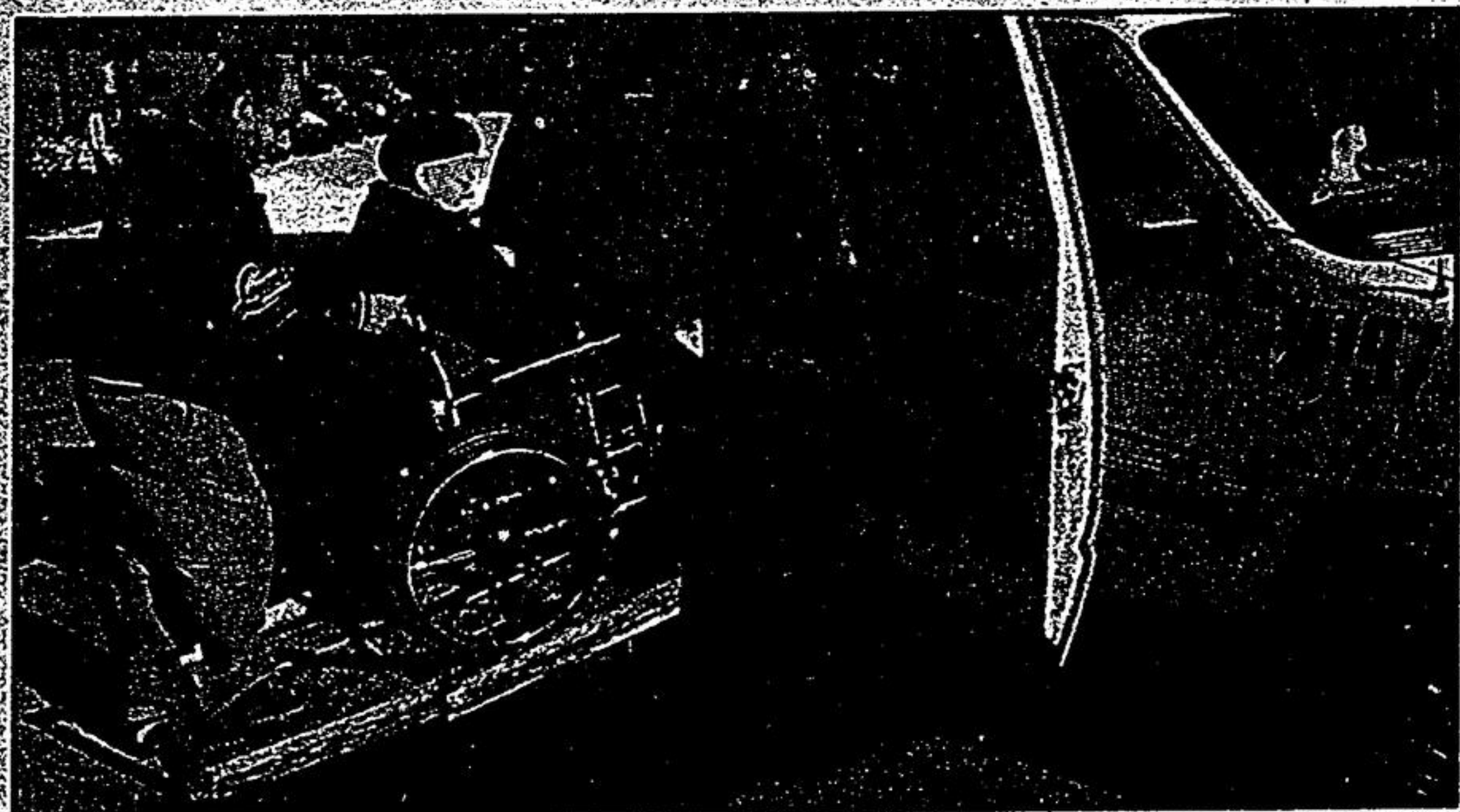
need get to medical appointments, grocery and department stores, the library, schools and social visits.

Margaret Britton and Wilfrid Morley, volunteer executive members of Mobility Transit, presented an outline of the service while making the annual pitch for municipal funding.

Whitchurch-Stouffville Council is expected to strike its budget by April 1. Morley and Britton have asked council to earmark \$25,000 for Mobility Transit.

"We usually get \$11,000 from the town and

■ Please see page 3 ■



HELPING HANDS: Hassan Mustafa helps Carol Towns onto the taxi ramp at Parkview seniors' centre on Rupert Avenue this week. Whitchurch-Stouffville Mobility Transit serves 500 people and is looking to expand its service into Goodwood.
 Photo by STEVE SOMERVILLE

3.9% FINANCING

* Up to 48 months. Freight, PDI, Admin, Taxes Extra or equivalent value credit of \$1500. \$24,995 includes \$1500 credit. Offers cannot be combined.

1998 MAZDA MPV

\$24,995*

ISO 9001

KoVac mazda

904-1210

Don't be moved.

800 HIGHWAY 77