



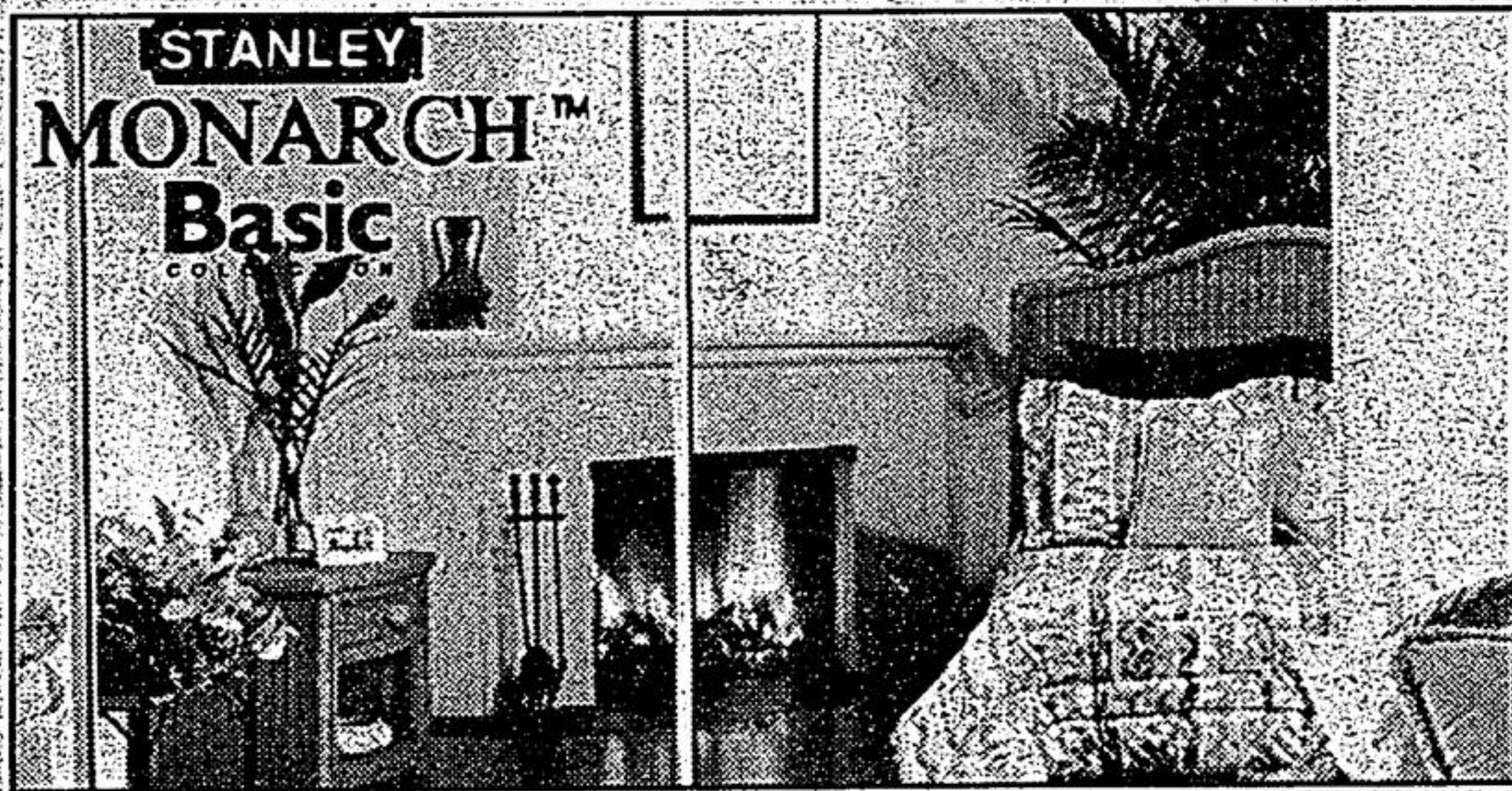
# HOMEGRAND

CANADA'S HOME IMPROVEMENT WAREHOUSE

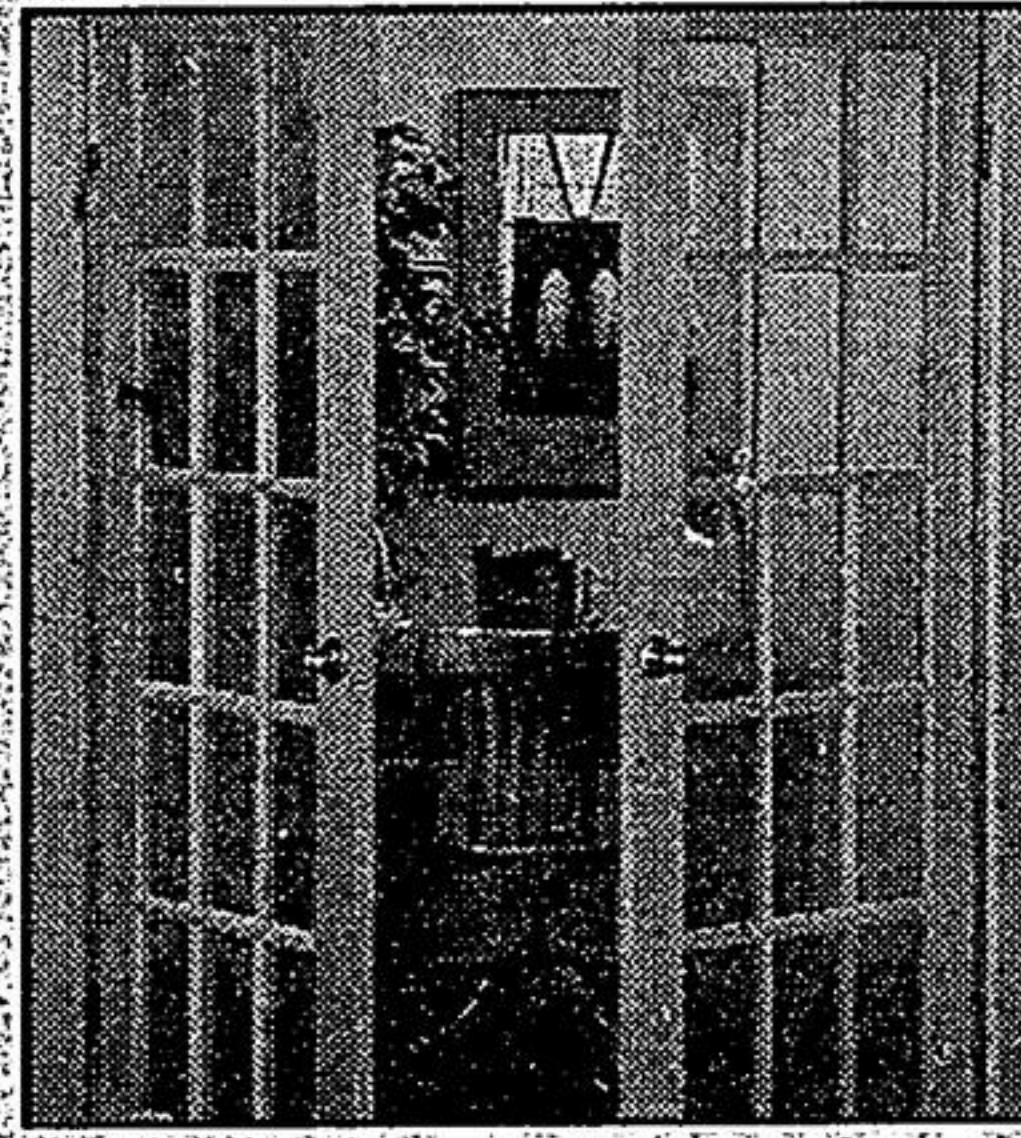
**DOORS OPEN TODAY 7AM**

**Building DREAMS together**

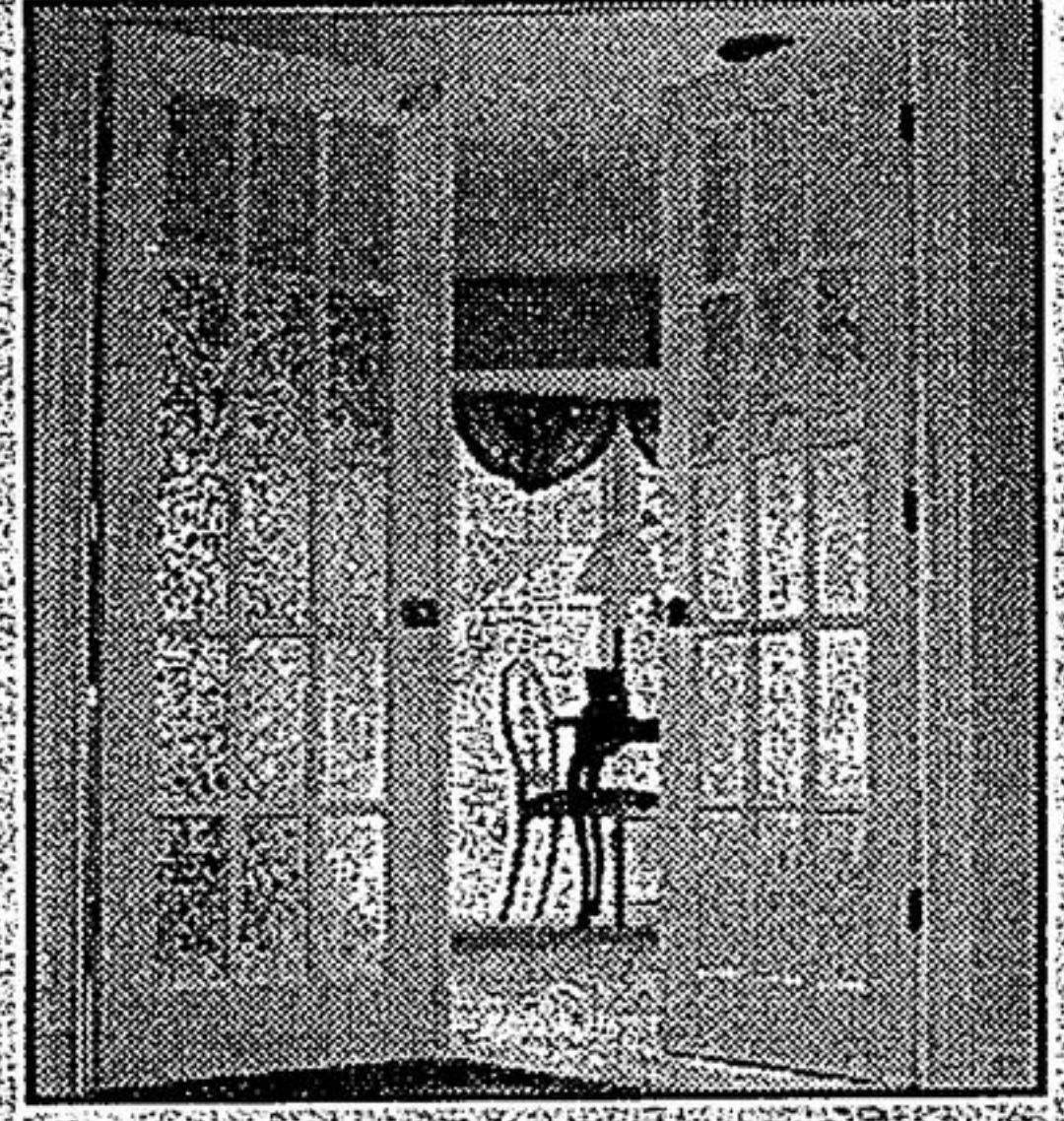
**Our 2ND Great Location in SCARBOROUGH!!!**  
 Morningside Ave. & Hwy. 401  
 (North of Hwy. 401)  
 60 Grand Marshall Drive  
 (416) 283-3166



**STANLEY MONARCH™ Basic**  
**\$739.74** 48"x80"  
**SLIDING MIRROR DOOR**  
 • Easy to install with complete instructions included  
 • Safety backed mirror meets CGSB specifications  
 4580-48C-WT (113015)



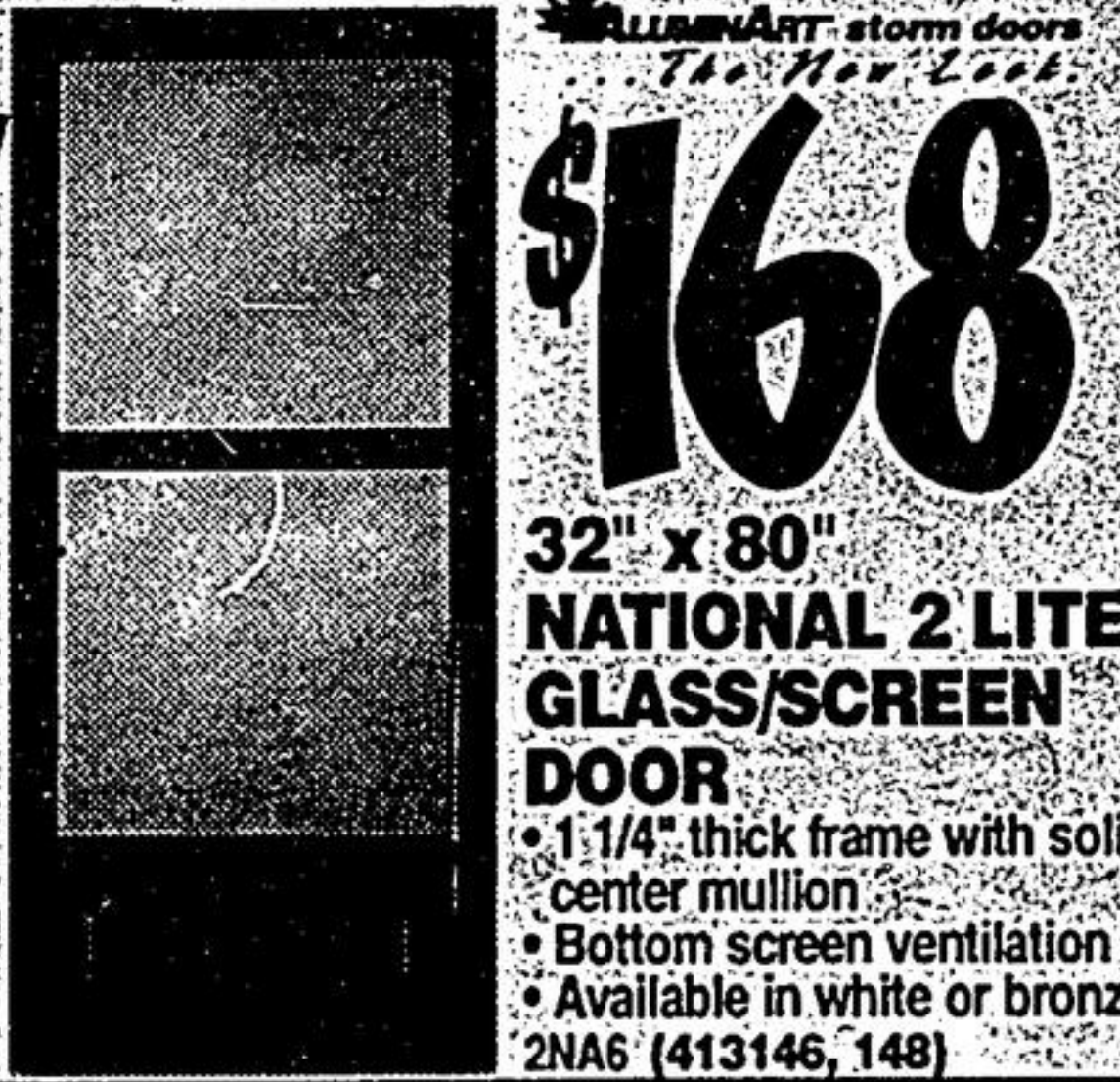
**30"x80" FRENCH DOORS**  
**\$99** PINE  
 • Fingerjoint, flat glass  
 • Ready to paint  
 215 (166171)



**\$119** **GLUECHIP**  
 • Fingerjoint pine  
 PJ2158030/GC (416754)



**PREMDOR**  
**\$624.7**  
**30"x80" COLONIST FASTFIT**  
 • Pre-cut header with jambs and door stop  
 • Door pre-primed for final topcoat  
 5023132668 (112177)



**ILLUMINANT™ storm doors**  
**\$168**  
**32" x 80" NATIONAL 2 LITE GLASS/SCREEN DOOR**  
 • 1 1/4" thick frame with solid center mullion  
 • Bottom screen ventilation  
 • Available in white or bronze  
 2NA6 (413146, 148)



**\$169**  
**32"x80" PRIMED 2-PANEL/9-LITE METAL DOOR**  
 • Solid wood lock block  
 • 4 5/8" frame by 1 1/4"  
 264 (115894, 897)



**\$169**  
**32"x80" 4-PANEL, FAN LITE**  
 • 4 9/16" jamb  
 • Polyurethane for maximum insulation  
 267 (115909, 06)

**WE'RE YOUR BUILDING MATERIAL WAREHOUSE**

**CGC**  
**\$549 EA.**  
**4'x8'x1/2" DRYWALL**  
 • Tapered edges to accommodate tape and joint compound  
 (115020)

**\$369 EA.**  
**D-4 CEDAR CREEK VINYL SIDING - WHITE**  
 • Natural woodgrain texture  
 • Won't rot, dent, flake, scratch or blister  
 VLC4C01 (426395)  
 24 PIECES/CARTON  
 (426394) \$88.49

**BP**  
**\$10.99 PER BUNDLE**  
**CITADEL ROOF SHINGLES**  
 • Covers 32.3 SQ. FT.  
 • Many colours available  
 • Low cost - 3 tab shingle  
 RS210 (114141)  
**20 YEAR WARRANTY**