

# Bid on goods, services and talents Saturday

TUESDAY, MARCH 3

## Assertiveness Training Series

CMHA is accepting registrations until March 6 for its Assertiveness Training Series beginning Monday, March 9 for 6 Mondays from 7 to 9 p.m. Learn and practice assertiveness techniques. Cost is \$90. Call 773-2305

## CALENDAR

WEDNESDAY, MARCH 4

### Book Club

Discussion Group/Book Club meets at 7 p.m. in the Whitchurch-Stouffville Library. Topic: Clothing through history as a reflection of our behaviour. New members welcome.

SATURDAY, MARCH 7

### Goods, Services and Talent Auction

Taking place at Stouffville Legion (upstairs), 7 p.m. registration, auction begins at 8 p.m. \$2 entrance fee. Cash or cheque only, must be 19 years or older. Come and have some fun.

MONDAY, MARCH 9

## March Break Children's Program

Whitchurch-Stouffville Museum will present a three-part March Break program for children ages 8 to 14 beginning Wednesday, March 18 to 20. Sessions are from 1 to 3 p.m. Pre-register by calling 727-8954. Cost is \$20/3-day session.

TUESDAY, MARCH 10

## Amnesty Intl. Meeting

Amnesty Intl. Group 54 - Markham-Stouffville is holding a meeting at St. Philips-on-the-Hill Anglican Church, Markham at 7 p.m. All interested in preservation and advancement of human rights are invited to come. For info call Kathleen at 640-3840.

WEDNESDAY, MARCH 11

## Stouffville/Goodwood Women's Morning Coffee Hour

March Winds is the theme at Parkview Village Auditorium, 12184 Ninth Line, Stouffville, 9:15 to 11:15 a.m. \$5 incl. Fashions, song by Laurettia Luff, and speaker. Call Merle if unable to attend at 642-0160.

## Bethesda Women's Institute

Meeting held at Parkview Home, Rupert Ave. at 2 p.m. Our speaker will be Margaret Lowrie, wife of Rev. Mark Lowrie. Lunch at 12:30 p.m. at the Grand enivre Restaurant, Parkview Village.

## Hepatitis B/C Support Group Meeting

Get involved in this community issue by planning to attend a meeting sponsored by York Regional Health Services Dept. to develop a support group at 4261 Hwy. 7 East, Suite 302, Unionville, 7:30 to 9 p.m. To register call 940-1333. Refreshments will be served.

THURSDAY, MARCH 12

## "Mighty Docs" Hockey Game

The Mighty Docs vs. Major Peewee Clippers to be held at the Stouffville Rec Centre 7 to 10 p.m., public skating to follow. All proceeds will be donated to Markham-Stouffville Hospital. Admission is \$5 per person.

## EUREKA VACUUM CLEANERS



### WORLD VAC CENTRAL VACUUM

- For homes up to 8,000 sq/ft
- Powerful 13.5 amp motor
- 10 year motor warranty
- 30' electric hose - Deluxe
- Deluxe electric powerhead
- 5 piece tool set

FREE VAC-PAN or Garage Kit

All for only \$579

Lifetime Limited Warranty!

J.D. Enterprises

77 Quaker Village Dr. Uxbridge

(905) 852-7404

Toronto Line (905) 649-8844

Hurry! This is a limited production package!



## THE LIONS CLUB OF STOUFFVILLE Wishes to Thank Everyone for 60 YEARS OF SUPPORT



## John Huddart

Sales Representative

905-852-6143



**QUAKER VILLAGE**  
 • Classy 3 bedroom townhome  
 • Upgraded kitchen cupboards & broadloom  
 • 1-1/2 baths, rec rm. with built-in bar  
 • Attached garage • \$159,900  
 Call JOHN HUDDART today!



**LOCATION - LOCATION - LOCATION**  
 3000 sq. ft. shop on 25 acres. Gas heat, separate office, good parking, high traffic street in Uxbridge. Bring your ideas. \$239,000. Call JOHN HUDDART today!



**OFTEN SOUGHT SELDOM FOUND**  
 Fabulous 2500+ sq. ft. Century. Completely restored & renovated. Grand rms, 3 bdrms, 3 baths, orig. trim, yet all the modern conveniences. English gardens with pond. A 10+ ft. List \$289,900. Call JOHN HUDDART today!



**VICTORIA VILLAGE**  
 Large brick bungalow backing onto the North York Valley. Over-sized lot, 3-1/2 bdrms. Nature at your back door, yet close to everything. Lawrence & Vic. Park area. Just listed at \$349,900. Call JOHN HUDDART today!

### TAKE YOUR PICK? \$99,000

20 acre building lot. Mix of trees & open space. Minutes north of Uxbridge or 10 acre building lot. Privacy plus Mature hardwood forest. Minutes north of Uxbridge. Call JOHN HUDDART today!

Uxbridge

(905) 852-6143

(905) 649-1761



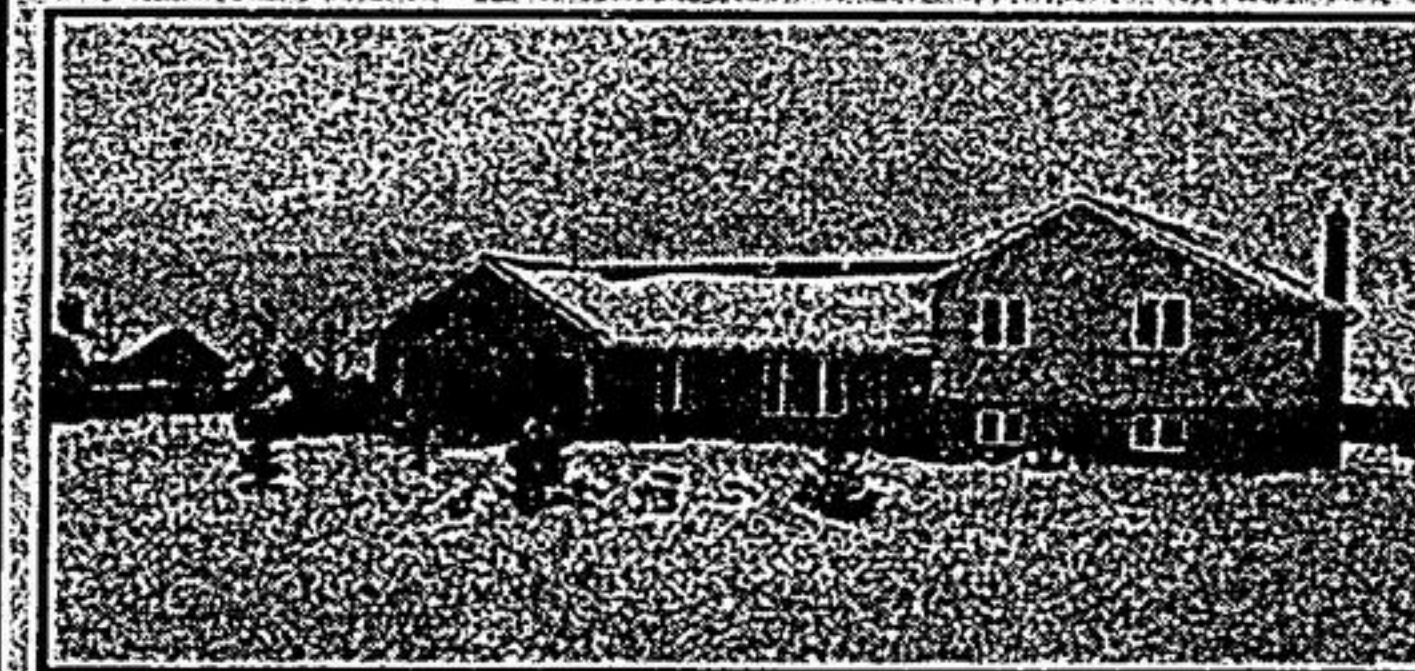
Scugog Realty Ltd.

## RIDGE NORTH Realty

PORT PERRY PLAZA (905) 985-9777 FAX 985-9161

Member Durham Region & Lindsay Real Estate Boards

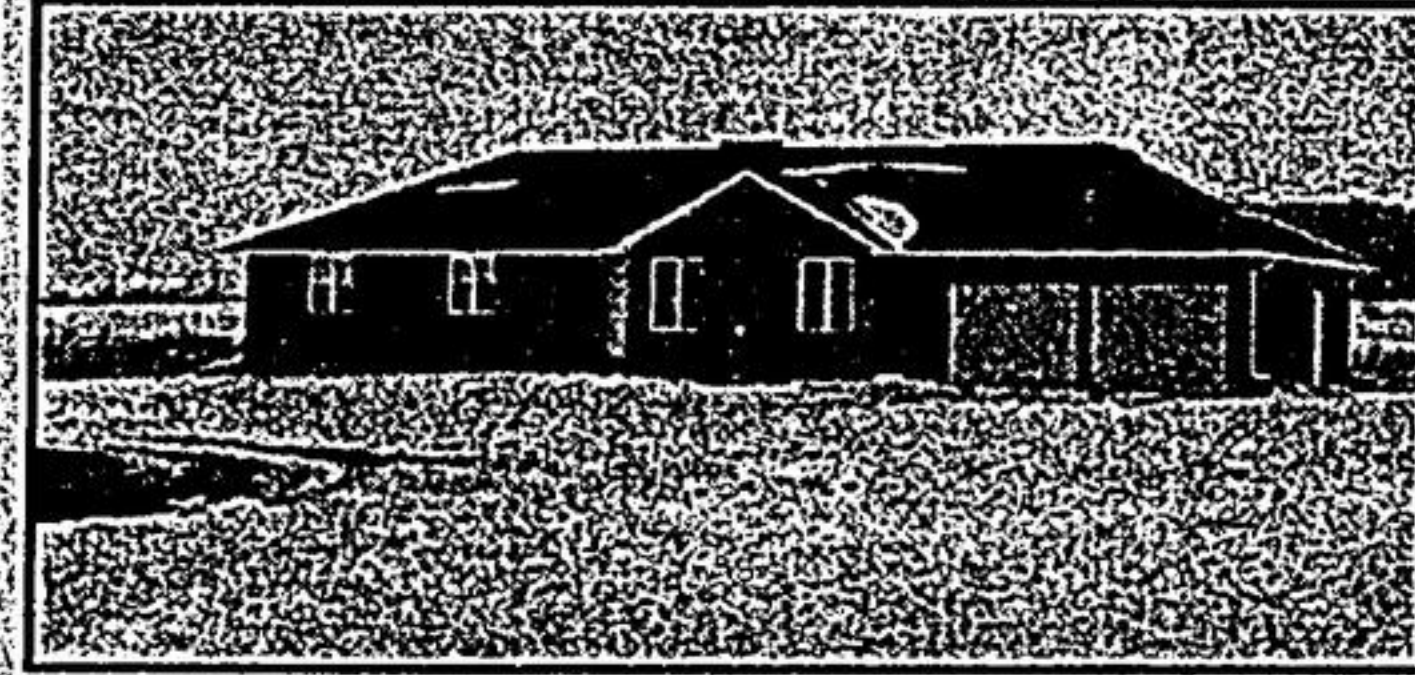
CALL TOLL FREE 1-800-448-1056



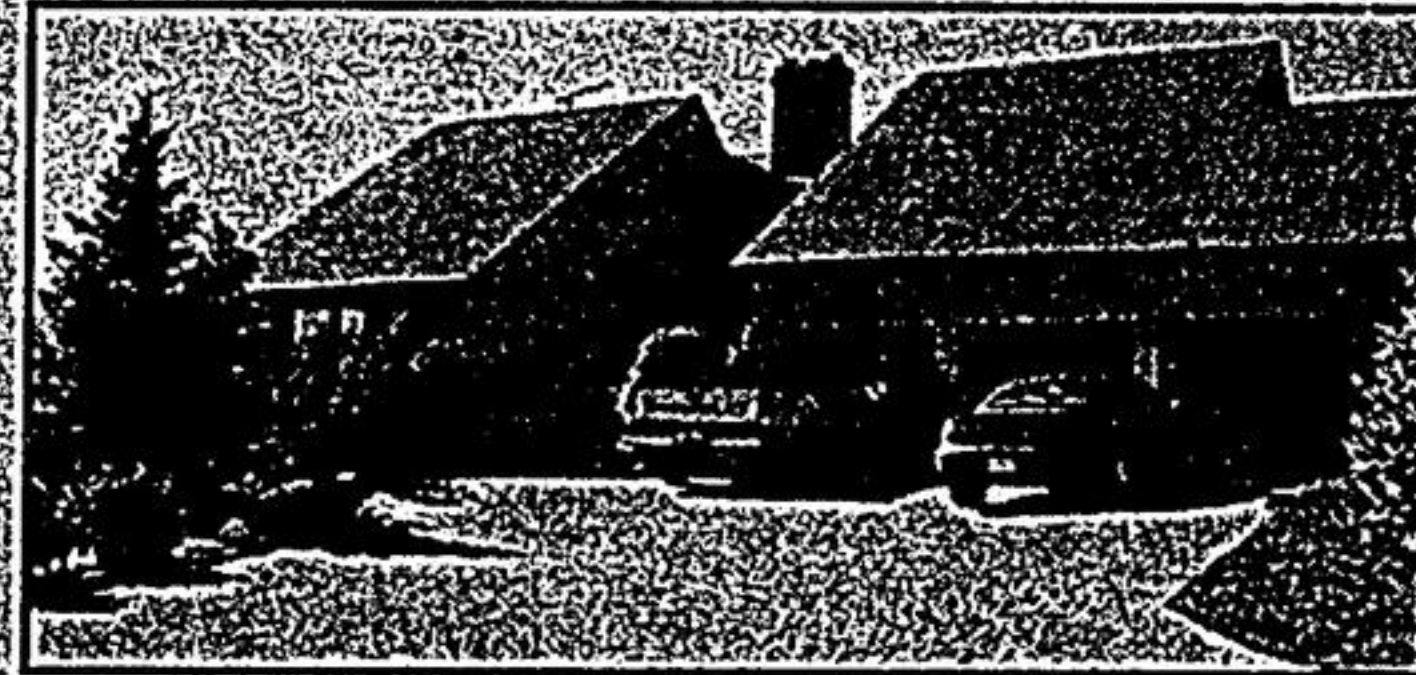
**CASTLE HARBOUR, PORT PERRY**  
 Prestige area with view of Lake Scugog. Open concept, sunken living room, walkout to patio, main floor laundry, master ensuite, cozy rec room with gas fireplace. Women dream of this kitchen! Huge garage/workshop. 1.5 acre lot. This is truly a quality home throughout. Asking \$277,900.



**SCUGOG ISLAND, PORT PERRY**  
**JUST RIGHT FOR THE GROWING FAMILY**  
 2 bedroom brick bungalow on large lot close to town. Wood fireplace in living room and bright sunroom off dining room. Oversized detached double car garage. Large storage shed. Fruit trees & lots of room for gardening. Listed at \$185,900.



**SEAGRAVE HEIGHTS**  
**ALL THE BELLS & WHISTLES!!**  
 Quality built 3 bedroom bungalow on large country size lot with spring pond. Greenhouse kitchen with oak cupboards, w/o to large deck, formal dining room, main floor laundry, main floor family with fireplace, master ensuite, central air & vac. This home is a pleasure to show. Come view for yourself! Asking \$224,700.



**ROBLINGLADE ESTATES, PORT PERRY AREA**  
 Quality custom design, custom built, only seeing is believing! Unique kitchen that women dream of, large living/dining room combination with cathedral ceilings, floor to ceiling brick fireplace. Gorgeous master bedroom with 5 pc ensuite with corner tub. All bedrooms have Jacuzzi ensuites & walk-in closets. Main floor laundry. Two walkouts to large deck. Ceramic tile. 3 car garage on large lot overlooking Lake Scugog. Come see all the extras. You'll be impressed! Over 3200 sq. ft. Asking \$319,000.

**OMEMEE-TOWNHOUSE DEVELOPMENT - \$189,900**  
 Vacant land 2.92 acres in Village of Omeme. Draft plan approved for 24 townhouse units (6 buildings, 4 units per building). To be serviced with communal water system and municipal sewage disposal system. (Wells are currently in place and sewer hookup is at road). There is an additional 8.50 acres of vacant land as part of this parcel to be left in its natural state of forested acres fronting onto the Pigeon River.

**LOCATION, LOCATION!**  
**THORNTON RD., OSHAWA**  
 Nature lovers dream property, 29 acres super building site. Build your hobby barn, 20 acres of mature trees, ravine, year round Oshawa Creek runs through property. Priced to sell quickly at \$189,000.