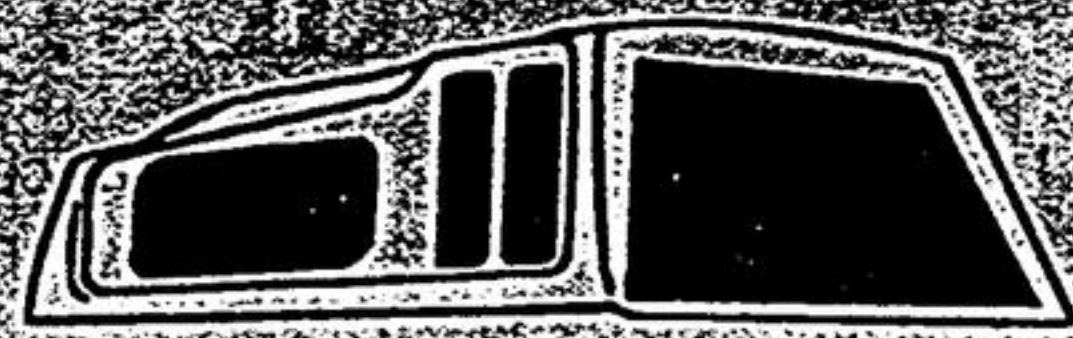


Truck, Van, Sport, Utility Vehicle Accessories & Installation

TRUCK CAPS Manufactured in Pickering by RDL Limited Lifetime Warranty

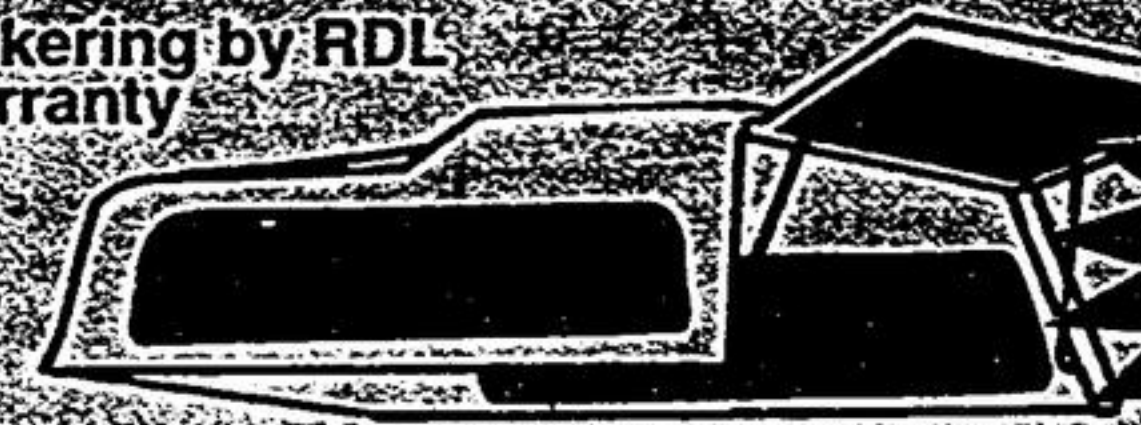


High Rise: Super Wedge



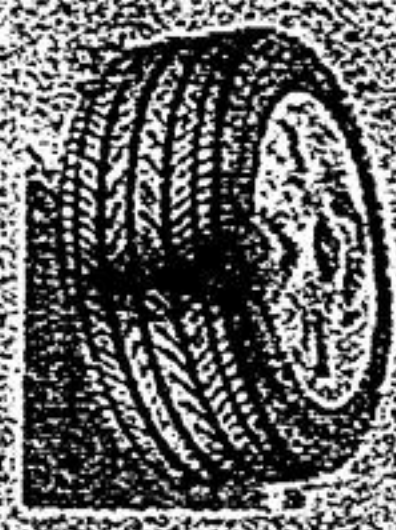
High Rise: Stealth

Cab High: Contour Series



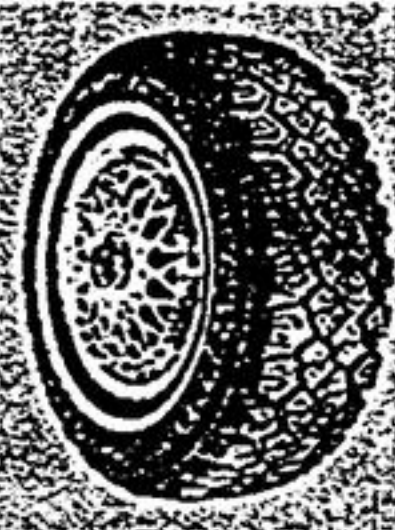
Slight Rise: Sport Cap

Prices start at \$799⁰⁰



DAYTON TIRES

13" from \$47⁰⁰
14" from \$59⁰⁰
15" from \$60⁰⁰



DAYTON SNOWS

13" from \$64⁰⁰
14" from \$80⁰⁰
15" from \$86⁰⁰

REESE TRAILER HITCHES



For most cars & trucks from 1,000 to 14,000 lbs. capacity. Custom hitches and wiring also available.

Light Truck Extra Load Tires

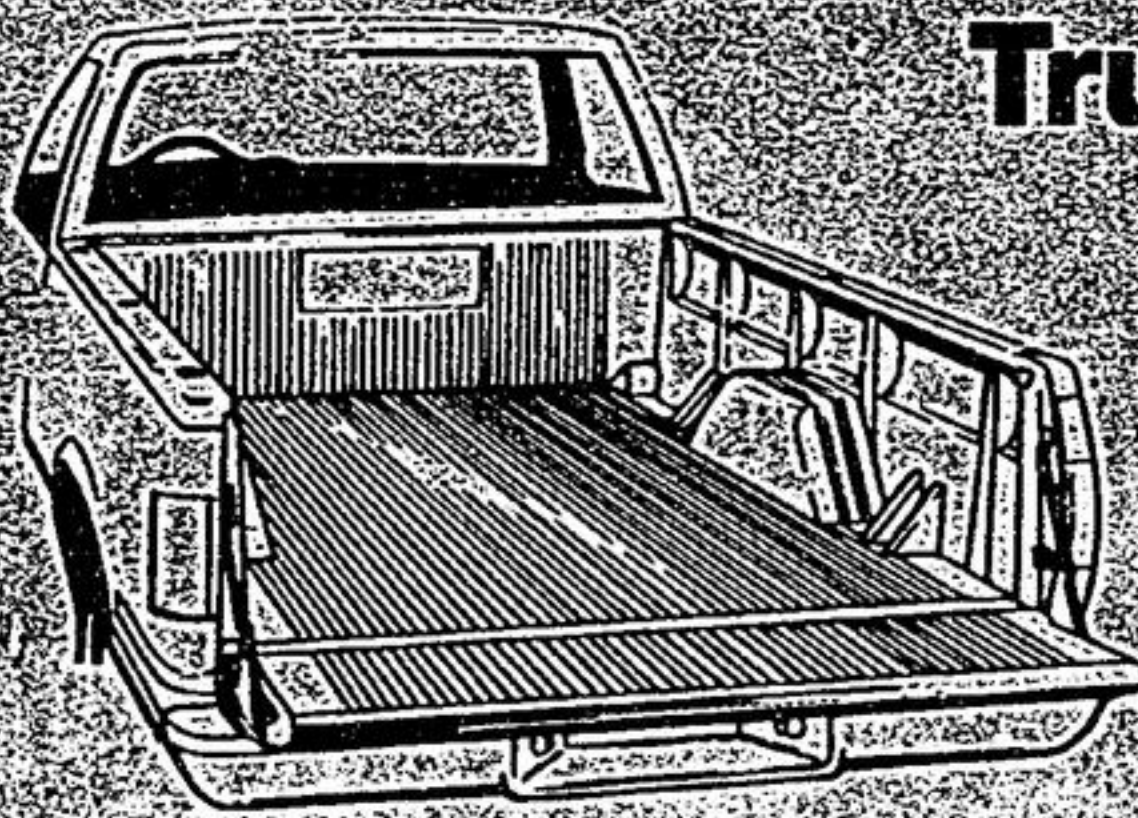
From \$99⁰⁰

* All prices include installation, balancing & new valve stems

25% OFF ALL BRAND NAME TIRES

* Michelin * Goodyear * BF Goodrich * Uniroyal * Firestone

All Makes And Models Installed For \$199.00

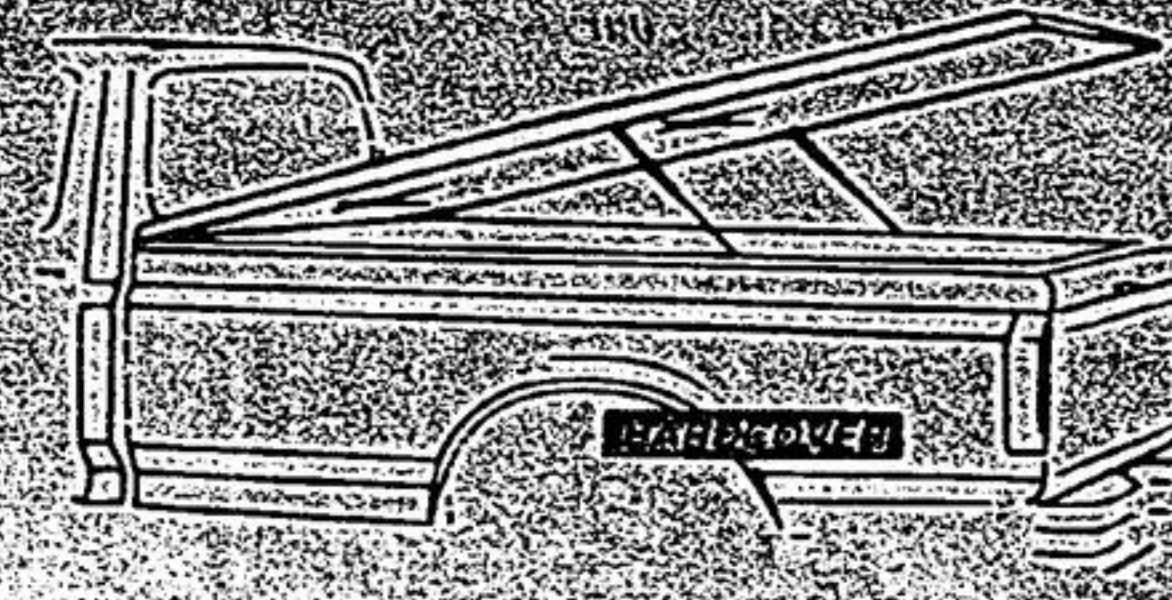


Truckbed Liner

- Over & Under Rail Models
- Cargo Gripping Surface
- Limited Lifetime Warranty
- Easy Installation

Fiberglass Tonneau Cover

- Custom Fit, Installs in Minutes
- No Drilling



All Sizes Painted To Match Installed For \$850⁰⁰

RJ PICK-UPS & ACCESSORIES

241A MAIN ST. N., UXBRIDGE
905-852-4238

Parkview Village Retirement Community

Parkview Village is a desirable, friendly and established Retirement Community set in the warmth and charm of heritage Stouffville, within minutes from local shopping, business services, golf courses, hospitals and Metropolitan Toronto.

OPEN HOUSE

Our Phase 2, Cluster Suites are now complete!

Select 2 bedroom models (B,C,D) are available. Please join us and see how you can

- ✓ maintain your independence!
- ✓ enjoy a comfortable, fully accessible suite with direct indoor access to the auditorium, restaurant, convenience store, hairdresser, work/hobby shop and much more.
- ✓ retain financial equity through our life lease purchase plans starting from \$183,900 - \$203,900
- ✓ enjoy the luxury of a sunroom, gas fireplace, underground parking & 4 appliances!

Tuesday, February 24, 1998 2:00 p.m. - 4:00 p.m.

12184 Ninth Line, Stouffville ~ (905) 640-1940, Ext. 21

"Serving the Whitchurch-Stouffville and surrounding areas from a Christian perspective for more than 30 years!"