

JAKES
an Main
PUB & GRILL
 MONDAY-NITE
 2 FOR 1 WINGS
 FRIDAY & SATURDAY
 LIVE DJ
 3 Satellite Dishes - 20 TVs
 NTN Trivia - Family Menu
 Games Room
 Private Parties
470-6955
 Unionville

THE TRIBUNE

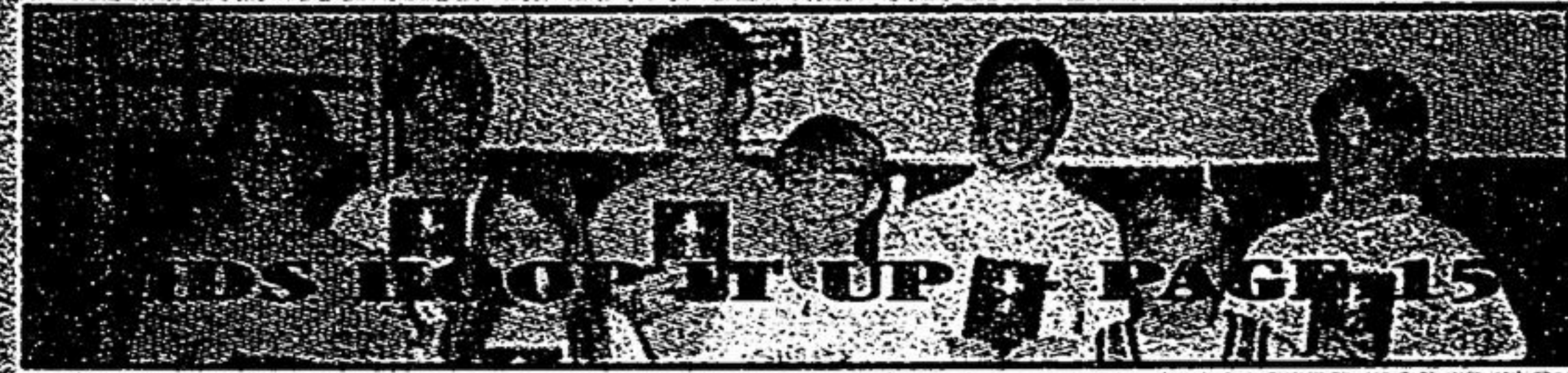
Vol. 110, No. 10

Thursday, February 5, 1998

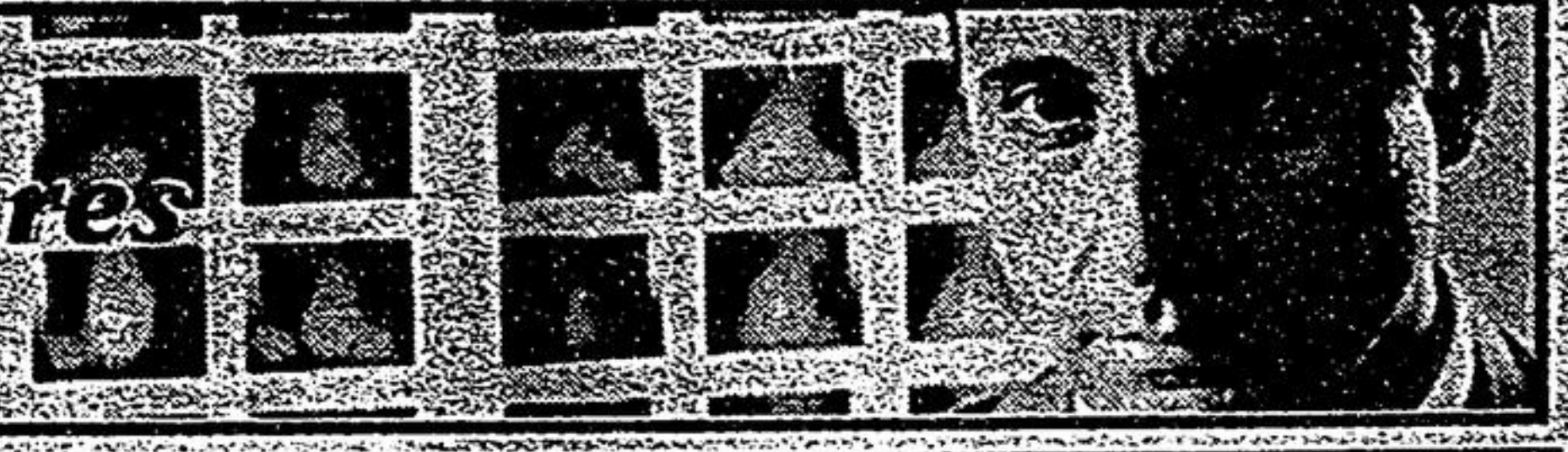
20 Pages 50¢ (GST incl.)

A Metroland Publication Serving Whitchurch-Stouffville Since 1888

THE SUBWAY
 A SANDWICH SHOULD BE
FREE SUB
 WITH THE PURCHASE
 OF ANY SUB OF EQUAL
 OR GREATER PRICE
 AND A MEDIUM SOFT
 DRINK
 LIMIT ONE COUPON
 PER FAMILY VISIT
 EXPIRES FEB. 28TH, 1998
 5812 MAIN ST. W. STOUFFVILLE



Nobody can save
Desperate Measures
 Entertainment Page 10



*In memory of
 Jim Wagg
 Our friends you are gone from
 our eyes
 but our hearts memories they
 hold
 I can't sadden we must say
 goodbye
 A hockey coach, a ball coach, a
 gentleman, a friend of young and
 old
 You will be missed by all,
 but never forgotten
 A friend*



Jim Wagg succumbs to cancer

The battle is finally over for Jim Wagg. The 62-year-old local sports advocate, coach and promoter, who for the past three years waged a most courageous fight with cancer, finally succumbed to the disease early Tuesday afternoon at Markham-Stouffville Hospital. Mr. Wagg earned the admiration and respect of his many friends, and anyone who knew him, with his chin-up approach to the esophagus, liver and brain cancer that ravaged him since March of 1995.

"He always fought back," said close friend Garth Bell. "He just wasn't going to quit. He would want to be remembered for his attitude."

Bell said his friend represented all that was good about small-town living.

"When you think of small towns and all they represent, you think of Jim Wagg."

"He had a great attitude," said Barb Scaife of the Whitchurch-Stouffville Parks and Recreation Department.

■ Please see page 3 ■

Town jockeys for new heights

JOAN RANSBERRY
 Staff Reporter

If a plan catches hold, Whitchurch-Stouffville will be known Canada wide as Horse Country in the next century.

About 75 local horse owners and operators are expected to attend the Horse Country Canada meeting on Feb. 12 at 7 p.m. at the Maples of Ballantrac Golf Club.

A facilitator will outline how and why Whitchurch-Stouffville has the potential to boast a growing and prosperous horse industry.

York Region has about 18,000 horses, the highest number in any region in Ontario, earning \$31.4 million a year.

"Just look around and you see horses," said Eric Lismanis, Stouffville's economic development manager.

Local residents Mavis McCallum of the Ontario Trail Riders and Judy Kennedy of Best In Show, are going door-to-door in the rural area distributing flyers to promote the meeting.

"We're getting a very favourable response so far," said Kennedy.

"We suggest Whitchurch-Stouffville, visually connected to the City Below, (Toronto) is the natural lead-in introduction to (the new millennium)," said McCallum.

McCallum is a dreamer.



HOT TO TROT As Mavis McCullum holds Cayenne, a 30-year-old Arab-Quarterhorse breed, Brian McCullum checks his hooves in front of their stable on Cherry Street north of Ballantrac.

Photo by SJOERD WITTEVEEN

Her dream is for Whitchurch-Stouffville to have a horse information centre in place. It would operate much like a tourist centre, she said.

As well, if something is organized at the local level, it's likely that York Region will view it as a tourist draw, said Lismanis.

The first part of the equestrian promotional plan is to publish a

map-brochure showing where all Whitchurch-Stouffville's equestrian spots are located.

Kennedy pointed out that a hefty number of spin-off businesses are associated with horses.

This includes saddle making, lumber, harnessing, horse blankets, riding gear, feed, trailers, trucks and health care.

HONDA'S NEW YEARS

\$208*
 per month
 48 months

1998 CIVIC COUPE DX



Low emission vehicle (LEV) • 4 wheel independent, double wishbone suspension • 60/40 fold down rear seatback • Dual airbags (SRS) • 5 speed manual trans. • AM/FM stereo with 4 speakers • Power steering • Power brakes • 14" wheels with 8 spoke covers.

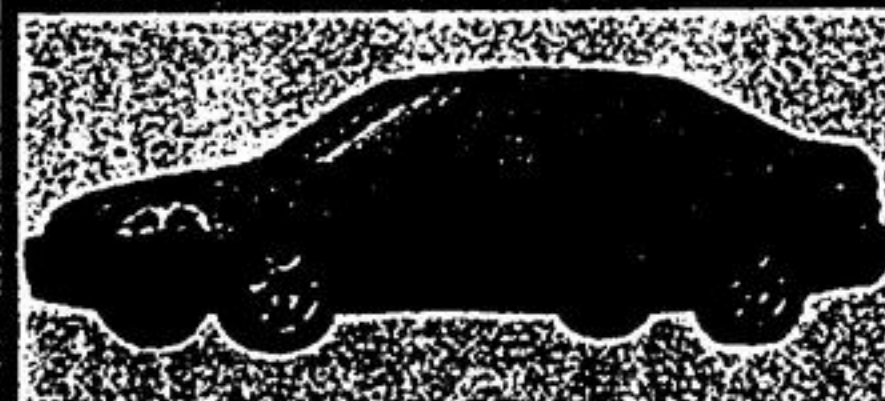
REVOLUTION

ONLY \$1825 DOWN
 Freight and PDE included

NORTH MARKHAM HONDA

4611 Hwy. #7, Unionville
 477-2451

1998 CIVIC SEDAN LX



Dual airbags • 5 speed manual trans. • AM/FM stereo with 4 speakers • Tilt steering • Power steering • Power brakes • 14" wheel covers • 60/40 fold down rear seatback • Lights on warning chime • Tinted glass • Dual manual remote operated mirrors • Low emission vehicle (LEV)

LEADERSHIP LEASING

*Based on new 1998 Civic Sedan LX Civic Coupe \$208 per month for 48 mths. Downpayment or equivalent trade of \$1825 required plus 1st mo. payment & sec. dep. FRI & PDI incl. taxes, lic. & ins. extra. OAC. Option to purchase at lease end. Zero downpayment plan also available. See us for details.