

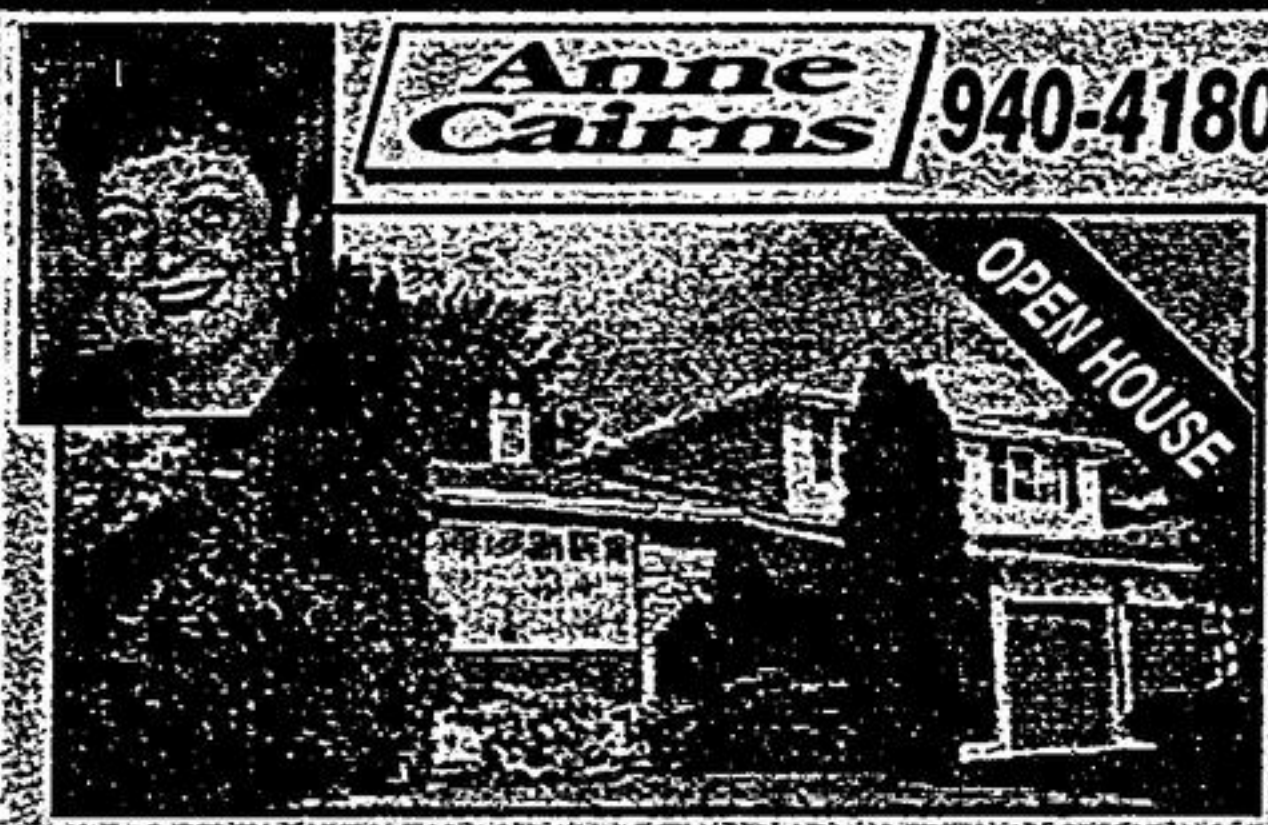


How you find a great REAL ESTATE AGENT

ROYAL LEPAGE

(905) 940-4180

MORTGAGE market CONNECT
CALL US FOR DETAILS



Anne Cairns 940-4180

OPEN HOUSE

12 LINDEN LEA - SUN. 2-4

Spacious home facing park. Featuring 2 car garage, large treed lot, air, vac, plus more! Come view on Sunday or call Anne Cairns.



TOP PRODUCER 1997!

JUST LISTED! SPECTACULAR "UNIONVILLE ESTATES"

Approx. 3/4 of an acre premium lot!! Sides onto "Cachet Estates" 5 bdrm, library, 4 baths, 3 car garage. Slate floors, 9' high ceiling. Custom stainless steel built-in appls. \$\$\$ thousands in upgrades. Asking price \$638,800.

LAURA WILSON
Sales Representative

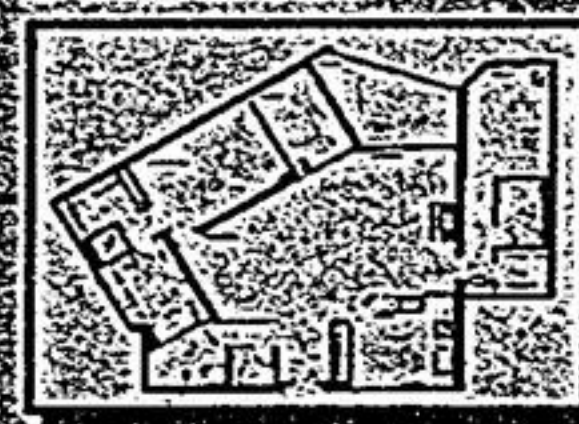
Call **LAURA** today at 940-4180
Your Markham/Unionville Specialist!!



RUTH KLEM

A House SOLD Name

905-940-4180



THE SKY'S THE LIMIT! OPEN HOUSE SUNDAY 2-4

Excellent value, facing south, 8th floor! 2 sep. bdrms, 2-1/2 baths, solarium, locker on same flr! Come & see the many upgrades included.



"UNIONVILLE" \$299,900

Gorgeous, bright updated home, new oak flrs, bleached oak kitchen, great size bedrooms, 5 piece ensuite, windows galore, overlooks huge private garden! Don't miss it! Call Ruth today!

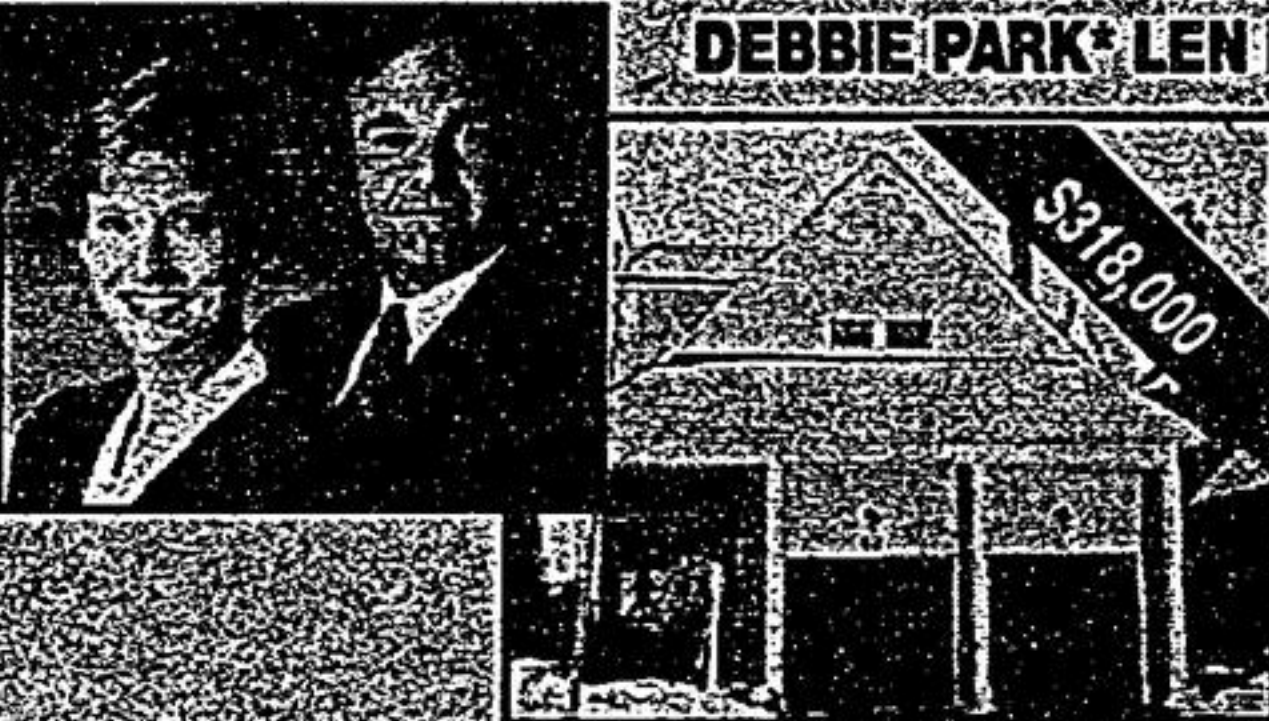


SHARON KOOSHESH*
940-4180

\$299,000

BEST CONDO DEAL

Absolutely beautiful, 2 bdrms, ++ southern exp., very bright & neutral eat-in kit, high floor. A must to see. Sharon Kooshesh.



DEBBIE PARK* LEN POWELL* CONSISTENT TOP PRODUCERS

\$18,000

BRIDLE TRAIL - A TEN!

Gorgeous 4 bdrm, 3 baths, bright, spacious kitchen overlooking fam. rm. CAC, CVAC, sec. system. Prof. fin. bsmt. Long closing available.

CALL **DEBBIE & LEN** 940-4180



\$129,900

JUST LISTED!

Victoria Park & Lawrence. Spacious 3 bdrm townhouse. Fin. bsmt. Outdoor pool & two parks within complex.



BARBARA HOLLIGAN*
940-4180

\$249,000

****JUST SOLD FOR \$245,750****

My goal: To assist you in obtaining the best possible price for your property with the least inconvenience in the best possible time. Let me work for you in 1998. I need more listings.



OPEN HOUSE SUNDAY 2-4

12159 Tenth Line, south of Main Street, Stouffville. Spotless & upgraded. Hardwood, ceramics, oak cabinets. Triple car garage with rear overhead door. 60' x 122' lot. Call Laura Gray, 940-4180.



MARILYN PARSONS*
905-940-4180

"IT'S A BEAUTY" END UNIT!
\$219,500. Totally renovated! Hdwd flrs thru out, 2 fireplaces, upgraded baths, w/o interlock patio. Must be seen! Call for more details. Marilyn Parsons.



\$215,000

OPEN HOUSE SUNDAY 2-4

33 Bramble Way. Beautiful townhome in quiet secluded complex, many features incl. gas t/p, wood flrs, French drs & cac. Come visit! Marilyn Parsons.



CAROLE DANARD**
905-940-4180

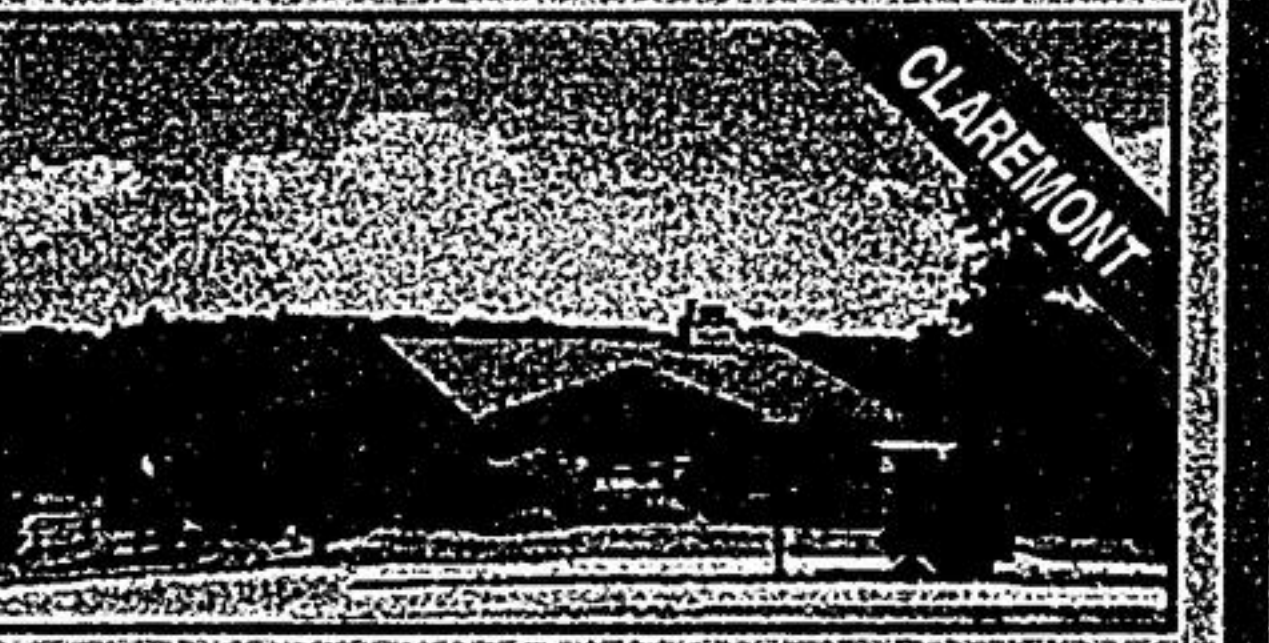
\$399,000

JUST LISTED - FANTASTIC PROPERTY
Markham ravine lot, 4+2 bdrms, 2-1/2 baths, + rec rm with fireplace, walk-out to treed "paradise" 1/3 acre with inground pool. Quiet cres., great for kids.



OPEN HOUSE SAT. & SUN. 12-5

\$380,000. Quality & custom design with a traditional look. Wrap around concrete porch, open concept, state of the art finishes, 60' ft. lot. Many upgrades. 3070 sq. ft. Call Laura Gray or John Wannop, (905) 940-4180.



PEAK PERSPECTIVE

\$359,900. Embrace the sunsets from a 10 acre hobby farm, abutting conservation. Features 3 fireplaces, large dining room, w/o family room, office & small barn. Call Laura Gray or John Wannop, (905) 940-4180.



QUALITY "CUSTOM" BUNGALOWS AND 2 STOREY HOMES BUILT BY SCHICKEDANZ BROS. LTD.

- Nestled on 1/2 acre plus estate lots
- Minutes from Markham in Ballantrae
- Homes feature gourmet kitchen, ceramics, 9 ft. ceilings, plus many more upgrades featured as standard
- Model home for your viewing pleasure



INGE R. SCHICKEDANZ*

Homes Priced from \$284,900
Call Inge R. Schickedanz* For New Home site hours and further information
905-940-4180
905-640-0303

You will not be disappointed



DONNA LINCOLN*
940-4180

TOP PRODUCER LIFETIME AWARD OF EXCELLENCE



LARGE UNIQUE BUNGALOW

Backing parkland, mature private 60' x 110' treed yard. Sunken living room, fireplace, huge finished rec. room, 4 bedrooms, separate side entrance. Great location.
Listings are in demand, call today, ask for Donna Lincoln, 940-4180

DEVELOPMENT LAND

Located in the heart of Unionville
Tremendous Highway 7 exposure
Call Inge R. Schickedanz* at 905-940-4180 for information package.



"THIS HOME IS GORGEOUS"
Come and see Sunday 2-4
46 Trothen Circle
(16th Avenue & Highway #48)
PS: just reduced to \$234,900.
Please call Inge R. Schickedanz for further information 905-940-4180

Reach us on the internet:
<http://www.royallepage.ca>
email address: markham@royallepage.ca

Find Us At The Shoppes Of Unionville
940-4180

*Sales Representative **Associate Broker *** Assoc. Broker/Manager

OPEN HOUSE
Sun. 2-4 12 Linden Lea A. Cairns
Sun. 2-4 610 Bullock #807 R. Klem
Sun. 2-4 33 Bramble Way \$215,000 M. Parsons
Sun. 2-4 98 Southdale Dr. \$239,000 R. Sandoz