

# 5th annual Toronto North Women's Show

BH6 - REAL ESTATE - JANUARY 24, 1998



**WE HAVE BUYERS!**  
**WE NEED YOUR PROPERTY!**  
**CALL FOR A FREE EVALUATION!**  
**905-640-1200 416-410-2660**



**BE YOUR OWN BOSS!**  
 Great industrial unit features 3 offices, mezzanine, 12' overhead door, 2 furnaces, 1 upgraded hydro supply. Call Ross\* or Joseph\* Gallo\*.

**JUST REDUCED!**

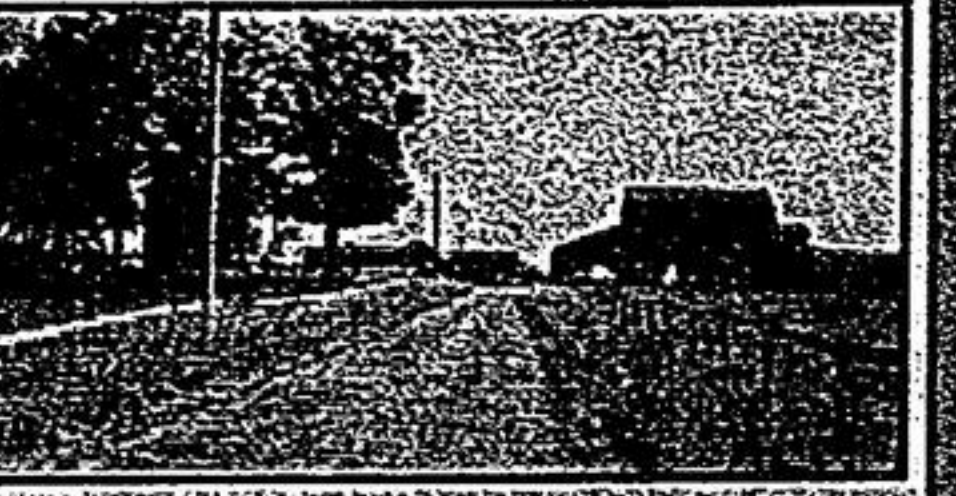
10 acres, \$134,900, 2 building sites available, some bush, some cleared, rolling land. Call Joseph Gallo\*.

**BEAVERTON**  
 51 ACRES  
 \$89,000

1005-foot frontage with mixed bush, pond, cabin. Good terms. Ross Gallo\*.

**EDGE OF TOWN**

23 acres with 717' frontage, situated within future development boundaries of the secondary official plan. Gently rolling land, new survey. Asking \$379,000. Ross Gallo\*, 640-1200.



**FOR SALE OR TRADE**  
 Hwy 48 frontage, 98 gently rolling acres adjacent to commercial property. 4 bdrm, renovated home, 2 baths, new windows, new furnace, large barn suitable for horses or beef. Vendor will exchange for residential or income property. Call Ross Gallo\*, 640-1200.



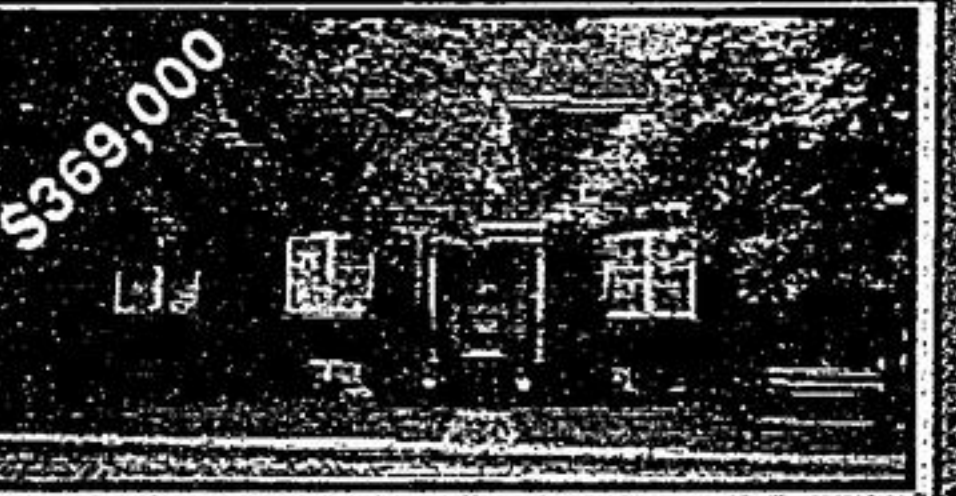
**GENTLEMAN'S FARM**  
 Custom home overlooks 100 ac gently rolling land w/10 paddocks, renovated barn, run-in workshop and a second home! Ideal for horses or beef close to Stouffville. Call Ross\* or Joseph\* Gallo\*, 640-1200.



**MCCOWAN & VANDORF**  
 5 room home with 23 ac gentle rolling land. Barn w/6 box stalls. Located in a fine area. Ideal for horses. Close to the restoration trails. A true value at \$283,500. Call Ross Gallo\*.

**AURORA & McCOWAN RD.**

2 Treed lots - side by side, 2 acres each. Across from York Regional Forest. Very private. Toronto Line Exchange. \$199,000 ea. Call Ross Gallo\*.



**A TOUCH OF YESTERYEAR**  
 Custom 4 bdrm, 2 designer bths, stately rms, dble gar, 1/2 pool & patio, sep ent to bsmnt, offices - some business use. Gail Dwyer Cavill\*.



**104 ACRES WITH 2 HOMES**  
 Two barns, fenced pasture, 10 garages, (1) heated workshop. Beautifully landscaped with tremendous views. 6 bdrm, main house (unique) plus 3 bdrm, bung. A must-see. Call Wayne Keeler\*, 640-1200.

**FARMER/LAND OWNERS - "I NEED TO TALK TO YOU"**

I have quite a few serious purchasers (due to recent sales) who are looking for 50 acre farms, 5-100 acre treed/partially treed land. Please call me in confidence. Elaine Kalmbach\*, 905-640-1200 or 1-800-491-0003.



**GET A GET AWAY! \$110,000**  
 Minutes from Penetanguishene! Own your own year-round like-new home w/cathedral ceilings & walkout basement. Very short stroll to deeded beach rights. Elaine Kalmbach\*, (905) 640-1200.

**LAND LUBBERS! 2 LOTS**

9+ acres each - Level land w/lovely views in south Uxbridge. Great for horse farm. New survey available. Call Elaine Kalmbach\* for directions! 905-640-1200 or 1-800-491-0003.



**WHEN ONLY 25 WILL DO...**  
 Acres that is! Maple bush occupies 4-5 acres; 2 acre paddock, rolling meadows w/mixed trees, 5 bdrm renovated home & small barn, 1/2 pool! Phone Elaine Kalmbach\* today! 905-640-1200/1-800-491-0003.

**DO YOU OWN AN IMPORT AUTO SALES/SERVICE? \$450,000**

This location on busy Hwy 47 would suit to a tee! No import/s/nearby. Gated/fenced pkg lot, 3000 sq ft bldgs w/3 o/h doors. Call Elaine Kalmbach\* today! 905-640-1200.



**BALLANTRAE - 3/4 ACRES**  
 Renovated 2+1 br, Kit/walk-out to deck - Finished basement. Det - 15x20 garage - Park your truck here! Call Kim Reesor\*.



**KIM REESOR\***

**#1 TOP PRODUCER**  
**SERVICING STOUFFVILLE,**  
**MUSSELMAN'S LAKE,**  
**UXBRIDGE.**  
**FREE EVALUATION!**



**LARGE FAMILY WANTED!**  
 Backs to conservation! Gleaming hardwood flrs - Pine Country kit, formal dr & lr - Fin rec rm - 163' deep lot! \$263,900. Call Kim Reesor\*.



**OPEN HOUSE**  
 12439 9<sup>TH</sup> LINE N, UNIT 115  
 SUNDAY JAN 25<sup>TH</sup> 2 - 4 p.m.  
 Fabulous floor plan! Mfl lr & kit. Walk-out to patio - 3 bedrooms. 2nd fl laundry - 2 parking spaces. \$159,900. Call Kim Reesor\*.



**CAPE COD - 1.41 ACRES!**  
 Decorated inside & out - finished basement - gas stove! Mfl fam/cathedral ceiling/stone fp - cust. inground pool & spa! Intown! Call Kim Reesor\*.



**QUIET CUL-DE-SAC!**  
 \$208,900  
 Fabulous floor plan! Country kit w/o to deck & fenced yard! Fin basement fireplace - 3 baths - Mfl fam/tp. Access to gar. Call Kim Reesor\*.



**VANDORF RD - 25 ACRES!**  
 Sprawling sidesplit - 33' fam rm, stone fp - 4 brs - 4 baths - Ceramics & hardwood flrs - 2 kitchens! Spotless thru-out. Call Kim Reesor\*.



**INTOWN - 2.65 ACRE**  
 Custom built stone & board & batten - Cathedral ceiling - 2 storey, stone fp - Loft overlooks lr - Country kit/walk-out - Private! Call Kim Reesor\*.

Let Your Friends About Us