

LOOK HERE!
Limited Time Offer
TREADMILLS
from \$599⁹⁹
PLAY IT AGAIN!
SPORTS
Call Bob Price 188 & Hwy 48 471-2822

THE TRIBUNE

Vol. 110, No. 6

Thursday, January 22, 1998

20 Pages .50¢ (GST incl.)

A Metroland Publication Serving Whitchurch-Stouffville Since 1888

THE SUBWAY
A SANDWICH SHOULD BE
FREE SUB
WITH THE PURCHASE OF ANY SUB OF EQUAL OR GREATER PRICE AND A MEDIUM SOFT DRINK.
LIMIT ONE COUPON PER FAMILY VISIT.
EXPIRES FEB. 28TH, 1998
5312 MAIN ST. W. STOUFFVILLE



**HE SHOOTS,
HE SCORES**
SEE STAPLEY - PAGE 16



KUNDUN
Scenic but Simple
Entertainment Page 6

Bowes honoured at farewell bash

KATE GILDERDALE
Correspondent

Last fall, Harry Bowes stepped down after more than 22 years as school trustee for Whitchurch-Stouffville.

And last night he was honoured for more than two decades of service to the community.

Dedicated, energetic and accessible, Bowes seemed to possess a miraculous ability to be everywhere at once, attending school concerts, graduations and parent council meet-

ings with astonishing regularity. He was also quick to address parents' concerns and his commitment to his job never wavered.

In 1974, he was a member of a parent group called Watching Educational Bureaucracy, which sided with the teachers against the trustees in a lengthy teachers' strike.

That group was instrumental in replacing many trustees, including the local representative.

When the latter had to move out of town, Bowes was elected to the position. During his

tenure as the board's longest-serving trustee, he also served as chairman of the board for six terms.

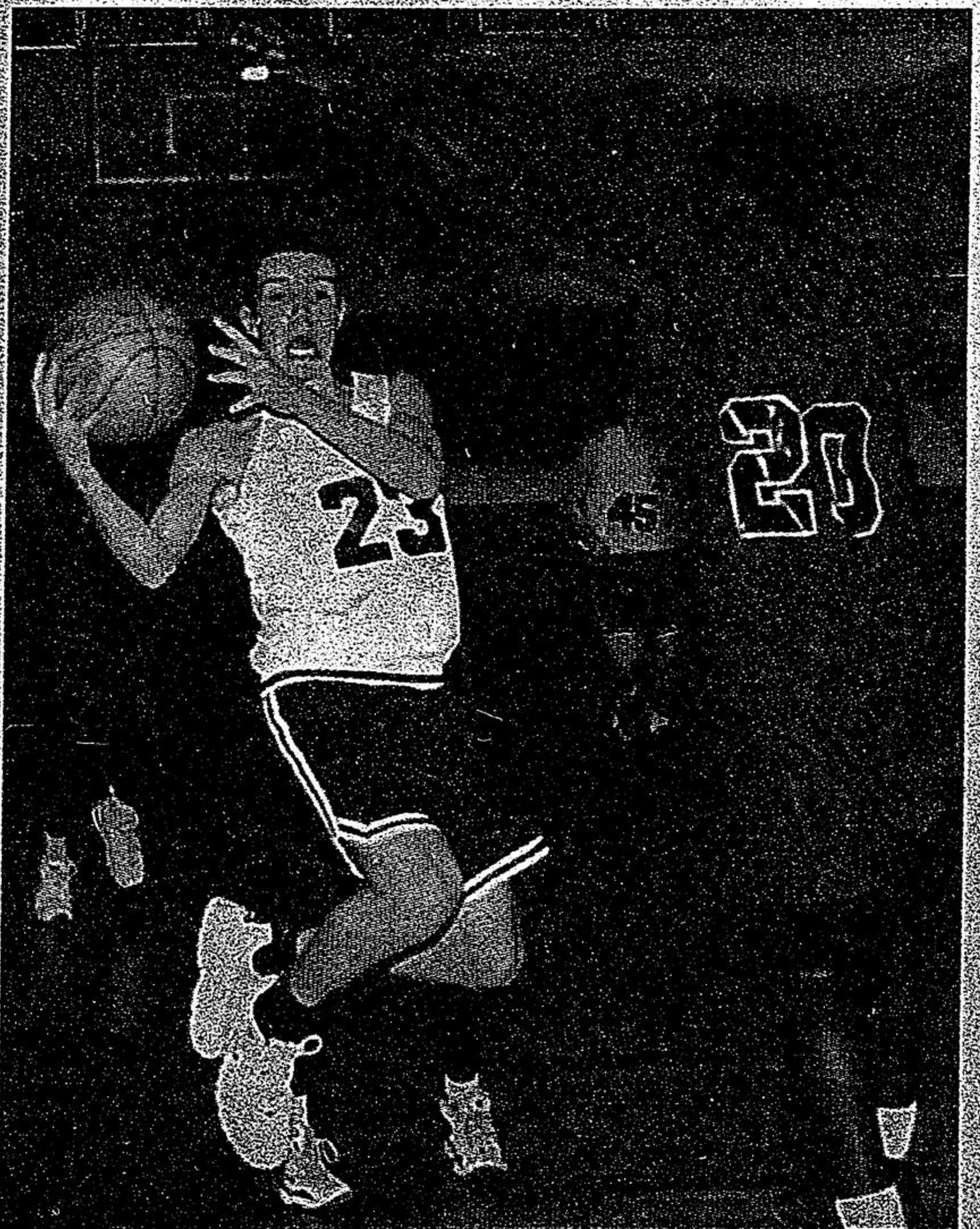
He sponsored a student award and was a familiar face at variety shows and musical presentations at local schools.

He was among 12 trustees honoured at a board meeting in December and received a standing ovation from those in attendance.

Board chair Bill Crothers said Bowes brought both a sense of public duty and good humour to his role as trustee, adding that strong leadership skills and compassion were evident throughout his six terms as chairman.

"All of us have been privileged to learn from you and work with you," he told Bowes.

Education director Bill Hogarth noted that Bowes brought a sense of fairness to the board, along with an incredible knowledge of its history, and said that his departure would leave a void. The region, added Hogarth, was "losing a fine ambassador for the board and for the kids."



BIG STRETCH: Bruce LaChance of the Stouffville District Secondary School's Junior Boys Basketball Team, goes up and around the outstretched arm of Father M. McGivney Catholic Academy's Gary Peazer for a shot at the basket in a game played at SDSS on Tuesday. SDSS lost the game 83-59.

Photo by STJORED WITTEVEEN

Sparks shoot out of hydro pole

JOAN RANSBERRY
Staff Reporter

Motorist travelling along Main Street west Tuesday evening thought they were

being treated to a mini fire works display.

It also attracted the Whitchurch-Stouffville Fire Department.

The problem was arcing, said deputy fire chief Murray Emmerson.

Fire sparks were shooting out of the hydro pole near the Coffee Tyme donut shop.

Whitchurch-Stouffville Hydro was alerted; the local fire department remained

on standby while the problem was fixed. It would have been a dangerous situation had the wires burned and dropped, stressed Emmerson. Precautions have to be taken, he added.



Longtime trustee Harry Bowes is congratulated by town Mayor Wayne Emmerson with a plaque during a farewell bash Tuesday night in Bowes' honour.

Photo by LORI EMMERSON

HONDA'S NEW YEARS REVOLUTION

1998 CIVIC COUPE DX **1998 CIVIC SEDAN LX**

\$208* **ONLY \$1825 DOWN** **LEADERSHIP LEASING**

per month 48 months

NORTH MARKHAM HONDA
4611 Hwy. #7, Unionville
477-2451

*Based on new 1998 Civic Sedan LX. Civic Coupe \$208 per month for 48 months. Downpayment or equivalent, trade-in of \$1825 required plus 1st mo. payment & sec. dep. Frt. & PDI incl. taxes, lic. & ins. extra. OAC. Option to purchase at lease end. Zero downpayment plan also available. See us for details.