

**SNOW FUN:** Jeff Raymo takes his daughter Charley, 17 months, out for a stroll and a sleighride to enjoy the winter weather on Friday morning in Stouffville.

Photo by SJOERD WITTEVEEN

## Rotary Club governor set to visit Stouffville

A district governor of Rotary International is making a guest appearance in Stouffville on Tuesday morning.

David Ing, governor of District 7070 will arrive in town to welcome the newly formed Stouffville Rotary Club into the fold and to extend an invitation to others to consider joining the Rotary Club, said club spokesman Dr. Brian Croft.

The Stouffville Rotary Club, which re-formed about six months ago, will receive its charter next month.

At the present time, the club in Stouffville is sponsored by the Rotary Club of Whitby.

Rotary provides humanitarian service, encourages high ethical standards and helps to build goodwill and peace in the world. Membership is open to men and women.

Rotary is a world-wide service club. A total of 28,000 clubs are established in 154 countries.

Anyone interested in Rotary is encouraged to attend Tuesday's breakfast meeting at Angie's Eatery on Main Street, W. beginning at 7 a.m.

For more information call 640-3562.

## Lung Association seeks support

The Lung Association, Metropolitan Toronto and York Region is still scrambling to reach its Christmas Seal Campaign's goal of \$1 million.

It is hoped that the extension Revenue Canada has put on the deadline for 1997's charitable contributions will encourage more donations to be made to the association's most vital fundraiser of the year.

In previous years, the Christmas Seal Campaign would have already brought in about \$700,000. However, this year only \$490,000 has been donated so far due to the postal strike.

Donations made until Jan. 31, 1998 are still eligible receive a tax credit for the 1997 tax year.

To make a donation, call toll free 1-800-668-7682 or (416) 922-9440.

# Meeting on communal water system slated

JOAN RANSBERRY  
Staff Reporter

A communal water system for Bloomington is one step closer to reality.

A public information meeting outlining a plan to link the hamlet of Bloomington to a water system will be held on Jan. 21 from 4 to 9 p.m. at the Glad Park Public School. Existing dwellings, churches and nursing homes may continue to be serviced by existing wells or may connect to the municipal water system, town staff has reported.

On Monday, Whitchurch-Stouffville Council will receive a report on the Bloomington community water supply.

In 1995, York Region assumed full responsibility for the provision of water and storage and to provide necessary financing.

In 1996, local council requested that the region proceed with the necessary Class Environmental Assessment to determine the feasible method of providing municipal water to Bloomington.

## TOWN

Regional staff will be on hand at Wednesday's information meeting to explain the entire water process.

## Hamlets to 'graduate'

The hamlets of Musselman's Lake and Ballantrae are about to graduate to town and village status.

On Monday, Whitchurch-Stouffville Council will review a report from York Region notifying municipal officials that the region has no concerns with redesignating Ballantrae and Musselman's Lake to town and village category in the region's Official Plan amendments.

The existing population of 1,000 in Ballantrae and between 1,900 and 2,300 in Musselman's Lake already exceeds the scale of development normally associated with a hamlet, a staff report said.

# Legion seeks to have town cenotaph moved

JOAN RANSBERRY  
Staff Reporter

Stouffville's cenotaph, honoring those who served in the First and Second World Wars and Korea, will be moved to a garden plot on the Ninth Line if local council gives the nod.

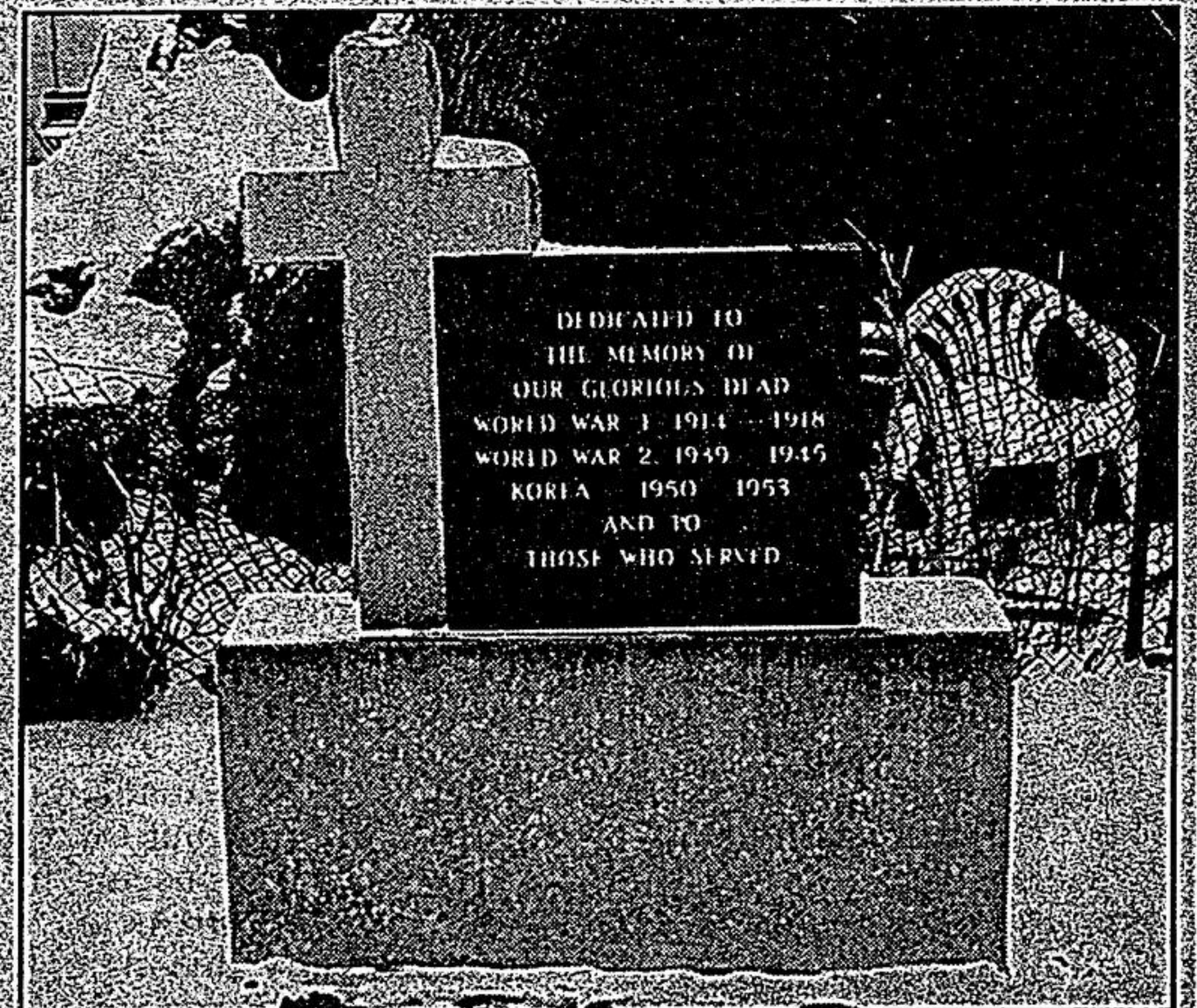
On Monday night, members of Whitchurch-Stouffville Council will consider a request from the local branch of the Royal Canadian Legion to pay to relocate the cenotaph from its present site in front of the municipal office on Civic Avenue to a special garden plot on Legion property on Ninth Line.

Legion Branch 459 spokesman George Lovett explained that in the past few months, the local Legion set aside a plot for a garden to be dedicated to the memory of The Princess of Wales who was killed in a car crash in France on Aug. 31, 1997.

A chain link fence has been erected, the plot has been prepared for flowers and a new 30-foot aluminum flag pole has been installed.

To further enhance the garden, it was decided to move the cenotaph from its present "obscure place" to the memorial garden, said Lovett.

Over the years, the cenotaph has had two homes, pointed out



The Royal Canadian Legion in Stouffville is asking town council to move the cenotaph from in front of the municipal offices to the Legion on Ninth Line.

Photo by SJOERD WITTEVEEN

Lovett.

"In the beginning, our cenotaph was situated in Memorial Park and for some reasons not completely understood, moved to a place in Civic Square," said Lovett.

The Legion is not, however, pleased with the cenotaph's present home.

The cenotaph is "unseen, impossible to approach and does not conform for the services it deserves," said Lovett.

The cenotaph plays a critical

role on Remembrance Day services held every Nov. 11.

Town council is being asked to authorize paying for the cost of the move.

"Like many branches, we are not in a financial position to execute this move," said Lovett.

Lovett stressed that the Royal Canadian Legion, a non-profit organization, has over the years donated "thousands of dollars to schools, minor hockey, soccer and our hospital."

## WE'RE FIRST IN DISTRIBUTION

We've delivered 2,287,647 flyers door-to-door, so far this year.

For further information on how we can deliver your flyers call

Ruth or Melissa at 640-2100

**The Tribune** Stouffville

## Watch for these Flyers on Saturday, January 17th, 1998

WALMART  
LOBLAWS/SUPERCENTRE  
SEARS  
BIWAY  
DORITOS PRODUCT SAMPLE  
A & P  
ZELLERS

WESTON PRODUCE  
FORTUNE FINANCIAL  
IGA-STOUFFVILLE  
DOMINION  
CHAMPAGNE CARPET CLEANERS  
LOBLAWS-NEWMARKET  
CANADIAN TIRE-RICHMOND HILL

Selected areas only