

**SAAB**  
REPAIR SPECIALIST  
172 BULLOCK DRIVE UNIT 31  
MARKHAM  
471-8660

# THE TRIBUNE

## Weekender

Saturday, December 13, 1997  
Vol. 13, No. 50

36 Pages.  
50¢ (GST incl.)

A Metroland Publication Serving Whitchurch-Stouffville Since 1888

**Rose Dixon**  
FINANCIAL SERVICES  
The Best Choice is Here!

| TERM  | GIC   |
|-------|-------|
| 1 Yr. | 4.55% |
| 3 Yr. | 5.15% |
| 5 Yr. | 5.75% |

Rates subject to change.  
GIC'S • RRSP'S • MUTUAL FUNDS • LIFE INSURANCE • ANNUITIES • RRIF'S • TAX PREPARATION • MORTGAGES  
96 Main St. N.  
Markham • 471-2311

Clear the track for  
Arthur Black - 4

Catch all the  
Sports news - p. 20

|  |          |          |          |          |          |          |
|--|----------|----------|----------|----------|----------|----------|
|  | <b>c</b> | <b>r</b> | <b>o</b> | <b>s</b> | <b>s</b> | <b>p</b> |
|  |          | <b>w</b> | <b>o</b> | <b>r</b> | <b>d</b> | 14       |
|  |          |          |          |          |          |          |

# Fisch named regional chair

LISA QUEEN  
Metroland Staff

York Region's new chairperson, Markham Regional Councillor Bill Fisch, is vowing to streamline municipal services while sidelining the controversial issue of amal-

gamating towns. "It's better to rationalize services than amalgamate boundaries," Fisch said, moments after his first-round victory Thursday night against Richmond Hill Mayor Bill Bell and Georgina Mayor Rob Grossi.

Former Newmarket mayor John Cole and former Richmond Hill councillor Gail Blackburn both pulled out of the race because they didn't have enough support.

Fisch's reluctance to resurrect the boundary debate comes as welcome relief to York's anti-amalgamation forces, including mayors in Aurora, East Gwillimbury and King.

Bell and Grossi are more receptive to amalgamations.

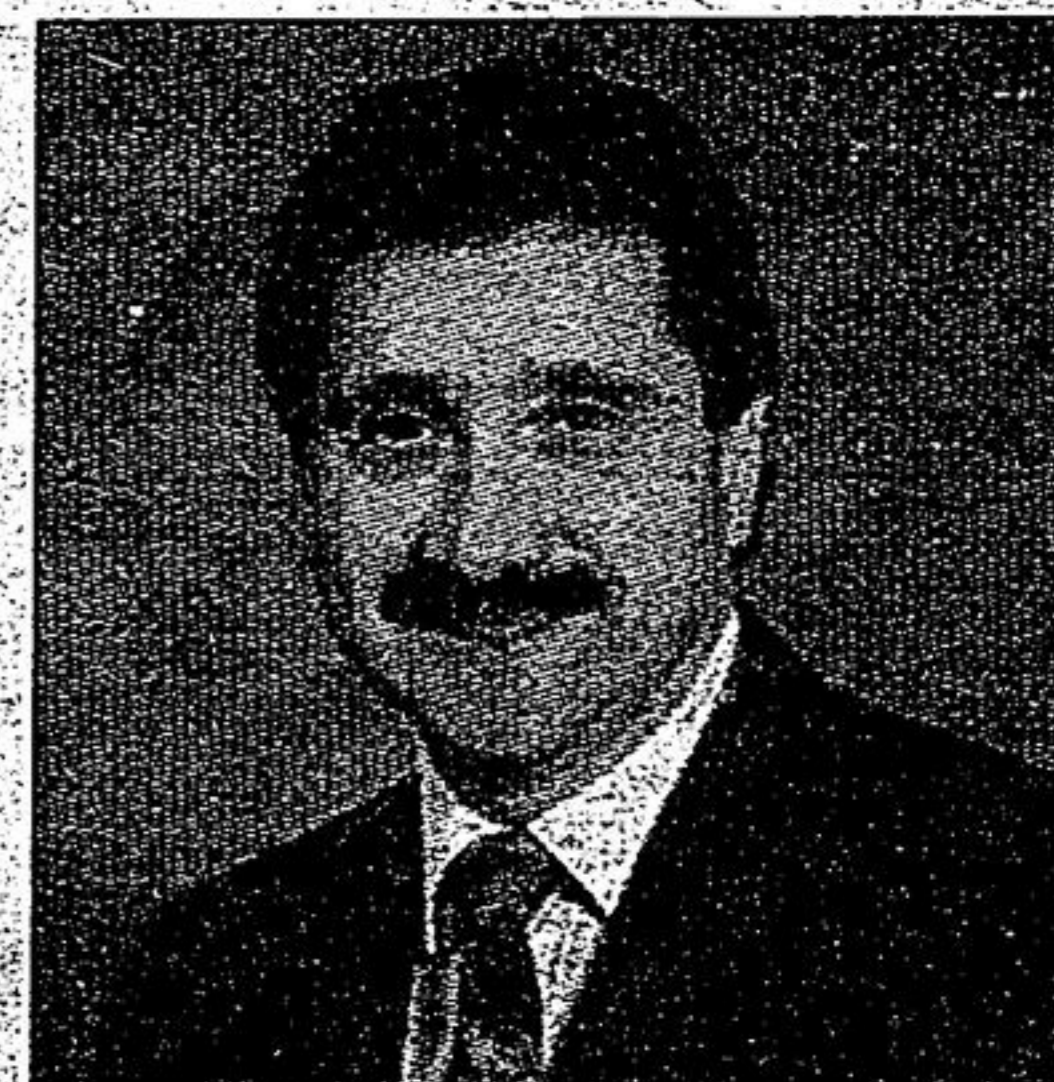
"I think we should cut to the chase. I'm identified as Mr. Amalgamation. I think it's cost me sup-

port and I think that's unfortunate," said Bell, who believes one York city is the best way to protect all of the region's communities and fend off takeover attempts by Toronto.

But Bell stressed any amalgamations should emerge only after local and regional services are streamlined.

Fisch, who appeared more open to restructuring during last term's governance discussions, acknowledged the region is heading into a challenging term.

"We face some of the most pro-  
■ Please see page 3 ■



Bill Fisch wins seat as York Regional Chairman in first round Thursday.

## New school 13th on 'list'

MIKE ADLER  
Staff Reporter

It could be quite a while before Whitchurch-Stouffville gets a second Catholic elementary school.

But Dulverton, as the project is being called, is now on an elementary accommodation priority list approved by York Region's separate school board.

Unfortunately, it's 13th on the list, meaning that building on the site is

a lot less important to the board than meeting its dire needs in parts of Vaughan, Newmarket and Richmond Hill.

And the board isn't certain how many schools it will be able to build yet.

All it knows, said its associate director John Sabo, is that the province will use a new funding formula next month to determine how many new pupil places are needed.

After that happens, the board will

### EDUCATION

decide what to build and how to build it, Sabo said.

In Stouffville, the board has only one school, St. Mark, and that school is overcrowded, he said.

But Sabo said it may be better to change boundaries and relieve the school than to build at the Dulverton site, on Millard St. between Linden Ln. and Greenwood Rd.

on Tues. Dec. 16 at 7:30 p.m.  
Free will donation at the door.

## @random

■ The size of the Whitchurch-Stouffville Hydro Commission will shrink if council goes along with a proposal to reduce its size.  
On Monday, local politicians

will consider reducing the five-member commission by two seats.

If council agrees, the new three-member utility commission would be made up of the mayor or an appointed delegate and two members of the community at large.

■ WINTER FESTIVAL '97  
Stouffville District Secondary School's music department is presenting Winter Festival '97

- Basic Black ..... p. 4
- Kate's Corner ..... p. 6
- From Where I Live ..... p. 10
- Crossword ..... p. 14
- Classified ..... p. 22

newsline  
640-2100



SPENDING 'THYME' WITH SAGE: Santa greets Sage at the local Pet Valu which invited the jolly old elf in to hear the Christmas wishes of all the cats and dogs in Whitchurch-Stouffville recently.

Photo by CHERYL JOHNSON

**SVT**  
SPECIAL VEHICLE TEAM

1998 EXPLORER

1998 F-SERIES

1998 WINDSTAR

0% financing on most in-stock 1997 models and 1998 Ford Windstar, F-Series and Explorer for a maximum of 48 months on approved credit. Limited time offer. All offers must be purchased by December 31, 1997 and delivered by January 31, 1998. Offer may change without notice. See Dealer for details.

McARTHUR FORD Presents  
**DECEMBER ZERO PERCENT EVENT**  
Make your best deal and get 0%, 48-month financing on all '98 F-Series, '98 Windstars, '98 Explorers and most '97 models including: '97 Aspire, Escort, Mustang, Probe, Contour, Taurus, Thunderbird, Crown Victoria, Ranger, Villager, Explorer, Windstar, Aerostar and F-Series.

**FORD**  
**McARTHUR FORD**  
Kennedy Rd. Just South Of Hwy. #7  
**(905) 474-1350**