

'Tis the season for potluck lunches and holiday concerts

TUESDAY, DEC. 9

Altona Women's Institute will hold their Christmas Potluck Luncheon at the Silver Jubilee Club, Main St. Stouffville at noon. Husbands or friends are invited. There will be a gift exchange and don't forget a donation for the food bank.

Living With Cancer

A self-help group for people living

CALENDAR

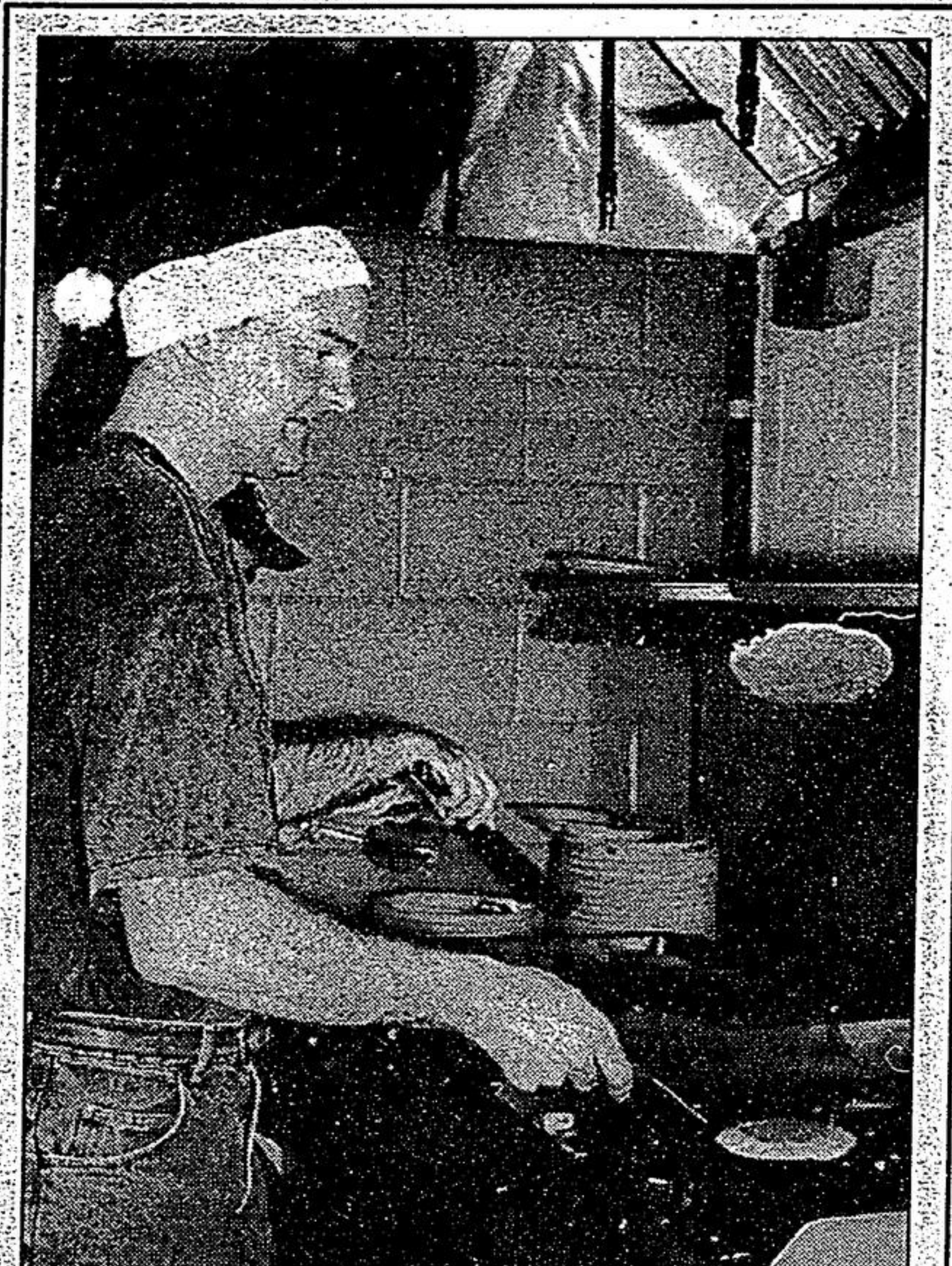
with cancer, their families and friends meets second and fourth Tuesdays at the Canadian Cancer Society, 227 Main Street Markham North (Station Plaza) at 7:15 p.m. No registration required. For info call 294-5925.

Lung Association Gifts

Two great gifts are available from the Lung Association: 1998 Lottery Calendar of Dreams \$20 — over \$12,000 in cash prizes better than 1 in 10 chance to win — and Golf Access 1998 \$59.95 plus tax, green fee coupons etc. Call 905-882-0101 to order yours today.

WEDNESDAY, DEC. 10

Christian Women's Coffee Hour



SANTA'S HELPER: Jeremy Gibbens flipped pancakes Saturday during the Breakfast with Santa event at the Clarendon Community Centre.

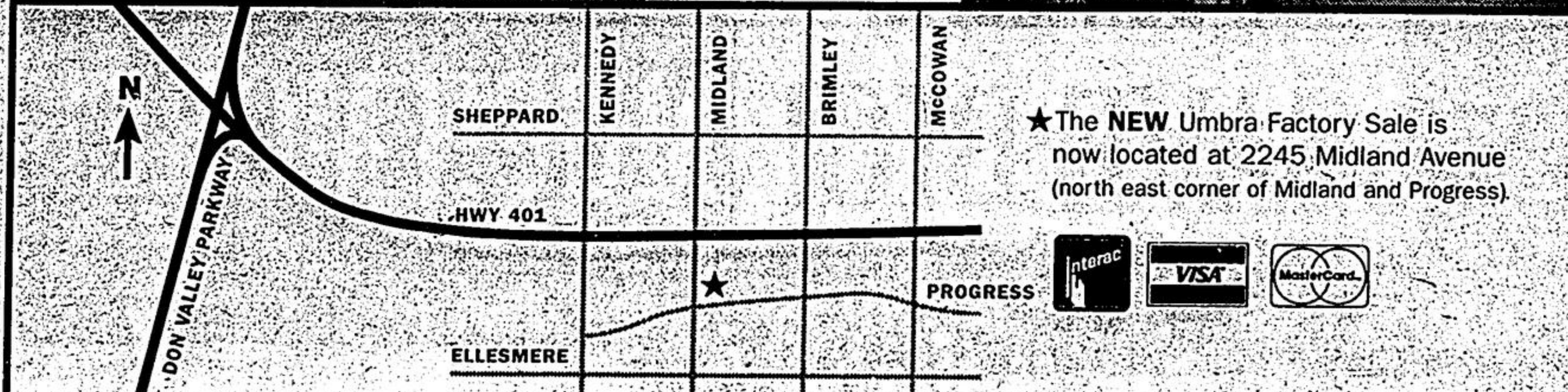
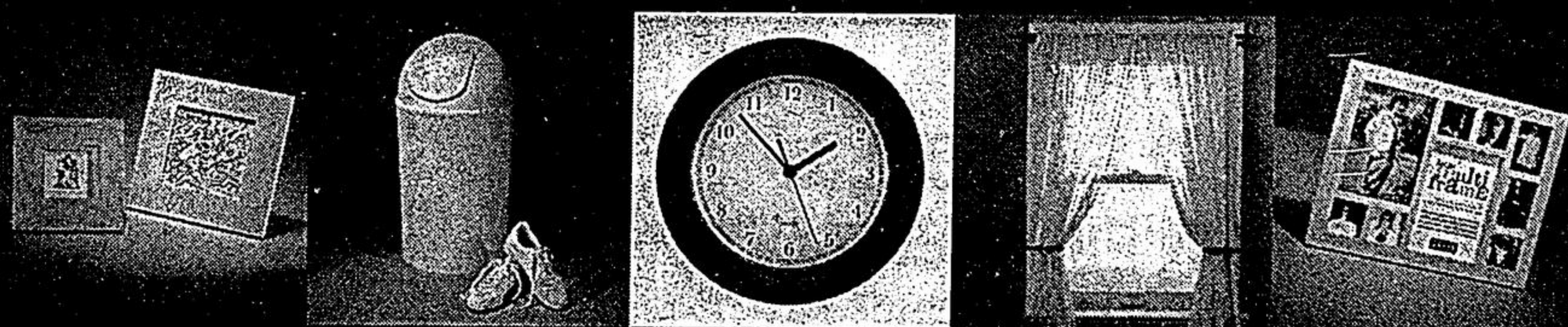
Photo by CHERYL JOHNSON

UMBRA FACTORY SALE

COOL STUFF! GREAT PRICES!

FIVE DAYS ONLY!

SAT DEC 13 AND SUN DEC 14 — 10AM TO 6PM
 MON DEC 15 TO WED DEC 17 — 10AM TO 4PM



★ The NEW Umbra Factory Sale is now located at 2245 Midland Avenue (north east corner of Midland and Progress)



2245 MIDLAND AVENUE NORTH EAST CORNER OF MIDLAND AND PROGRESS

NEW LOCATION

Stouffville/Goodwood Christian Women's Club cordially invites you to a morning coffee hour at Christian Blind Mission, Stouffville Rd. from 9:15 to 11:15 a.m. \$5 inc. Topics: Christmas Memories. Call Merle at 642-0160 to reserve.

Bethesda Women's Institute

The Christmas meeting for Bethesda Institute will be held at the home of Doris Kennedy on the Stouffville Road Dec. 10. The topic will be 'A Happy Christmas' and there will be a gift exchange. Come share with us.

THURSDAY, DEC. 11

Citrus Sale Pickup

Pick up your orders from the grapefruit and orange citrus sale Thurs., Dec. 11 and Friday, Dec. 12 at Stouffville District Secondary School between 3:30 and 6 p.m.

FRIDAY, DEC. 12

Live Bands

Grades 7 and up, live bands featuring: Lisa Swain, Yard Trip and Stalin's Head at the Ice Box, Stouffville Recreation Complex (12483 Ninth Line) 7 to 10 p.m. Admission: \$5.

SATURDAY, DEC. 13

Arthritis Volunteer

Join the Arthritis Society at Horton Tree Farm in Stouffville today and Sunday, Dec. 14 to hand out Christmas decoration ornaments and accept donations from families visiting the farm. Requires only a few hours, students welcome. Call the Arthritis Society at 508-5177 for more info.

Christmas Concert

Come to the Whitchurch-Stouffville Public Library for the 'Christmas Concert'. Join Cindy Cook from the Polka Dot Door in the hilari-

ous Jingle Bell Conga, 11 a.m. Admission is \$2 at the door.

SUNDAY, DEC. 14

Christmas Concert

A Christmas concert and play will be held at Stouffville United Church, 34 Church St. 7:30 p.m. Refreshments will be served.

TUESDAY, DEC. 16

Therapeutic Touch Support Group

Meeting the third Tuesday of each month 7:30 to 9:30 at Stouffville Therapeutic Centre for Massage Shiatsu & Reflexology. For info call Marita at 642-4237.

Gay Services Committee of York Region

Making York Region comfortable for the gay community. Do you feel the need to be involved? If you are interested in sharing and helping, we know where to get involved. Our committee meets the third Tuesday of each month. Call 1-888-4GAY-YORK.

Adult Skating Club

The Whitchurch-Stouffville Adult Skating Club invites all adult skaters for refreshments after our "Christmas" skate from 8 to 9 p.m. at the W/S Recreation Centre. Admission: \$3. Skating will resume on Tuesday, Jan. 6, 1998.

SATURDAY, DEC. 20

Springvale Baptist Productions

Springvale Baptist Church, corner of Kennedy and Stouffville Roads, presents another in its community series of productions entitled "God With Us" today and Sunday, Dec. 21, 7 p.m. Tickets are free at the church office, a freewill offering will be taken. For info call 887-5651.