



Experience A Country Christmas

Return to Bethlehem Re-enact the Christmas story

Some 50 Stouffville and Markham district churches are sharing in one way or another for the presentation over the next two weekends of "Bethlehem Live! '97"

This special Christmas feature, now in its fifth season, has really become a local tradition.

Many of the churches will have people participating as members of the cast. Over 140 persons in period costume, including 12 babies and their parents, are required for the re-enactment of the Christmas story. Others will or have served behind the scenes in costume and prop preparation, publicity, parking, crowd control, the serving of refreshments and more.

Those looking after parking are ably assisted by members of the Stouffville Lions Club.

Bethlehem Live! '97 is an outdoor re-enactment of the trip to Bethlehem that Mary and Joseph would have taken almost 2000 years ago, encountering the kinds of people along the way that Mary and Joseph also might have met. Persons attending will be grouped into families of 15 for their trip to Bethlehem. Interaction with soldiers, prophets, shepherds, wise men and all will occur along the route.

Every attempt is made to take participants out of the 20th century to get the feel of actually being in the



Twelve babies and their parents were used to re-enact the trip to Bethlehem. Photo by STEVE SOMERVILLE

first century. Even the lighting is all by natural flame. Since the evening walk is outdoors, those attending are urged to dress warmly.

The presentation runs from 6 to 9 pm nightly, Thursday to Sunday, November 20-23 and 27 - 30. Staging is on the back lot of Christian Blind Mission Int'l.

Parking is at the Springvale Baptist Church, 3701 Stouffville Road, just east of Kennedy Road, from

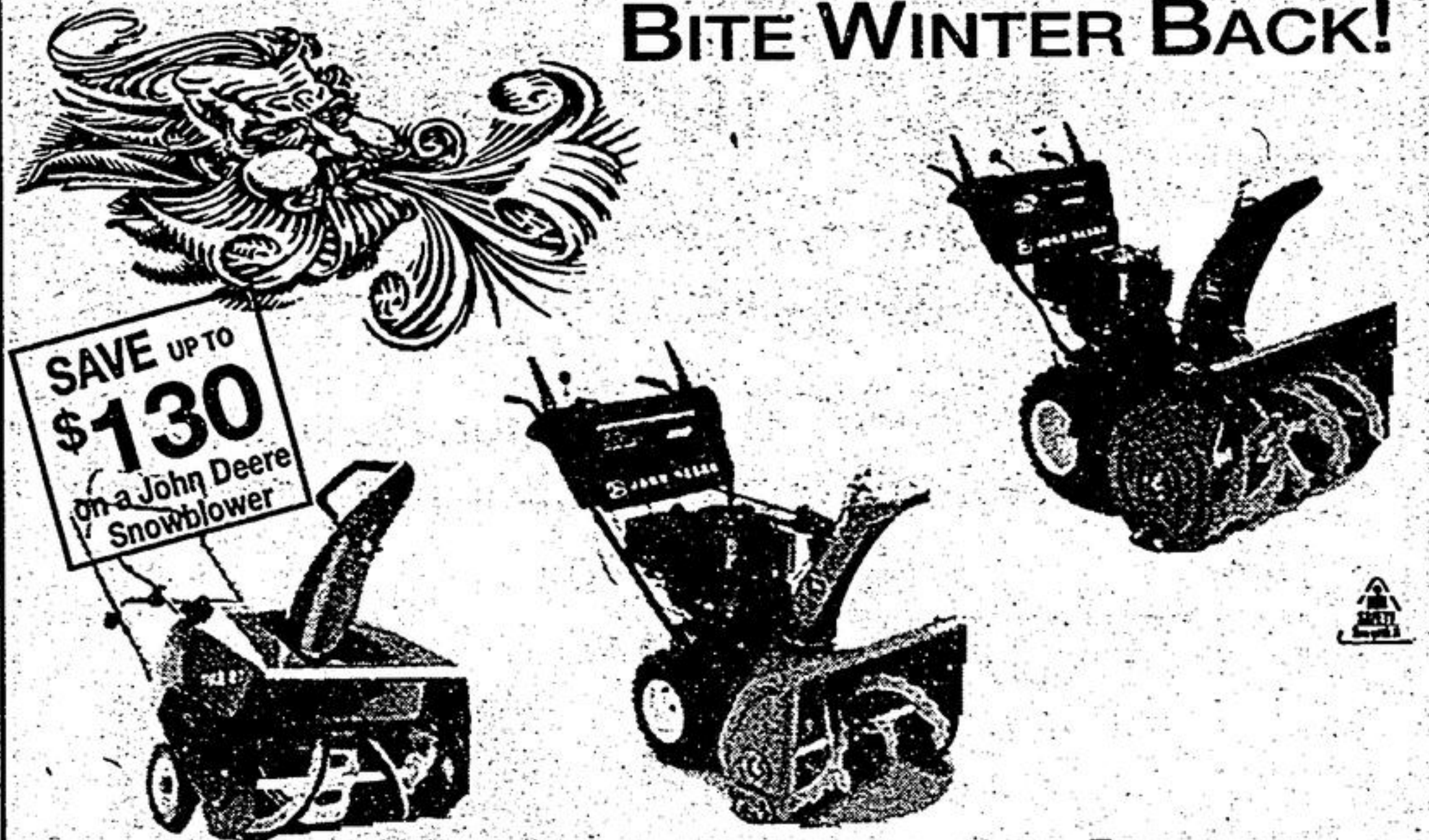
which people are shuttle-bused to the Mission site.

Approximately 1,000 people are expected each night with busloads from across the southern Ontario region.

A donation of \$2 per person or \$5 for families is requested.

In case of inclement weather please call (905) 640-6464 to determine that "Bethlehem Live! '97" is being conducted.

BITE WINTER BACK!



SAVE UP TO \$130 on a John Deere Snowblower

OUR DEFENSIVE LINE

If you want to triumph over winter's worst, make sure you've got a tough defense. Put a John Deere snowblower on your side, now available with generous rebate offers. Take your pick from the compact, single-stage, 5-horsepower thrower to our heavy-

duty 10-horsepower blower, all quality built for quick starts, rugged durability and years of dependability. So whether the playing field is your sidewalk or your driveway, there's a John Deere snowblower that's ready to show its muscle. Come in today and discover just how easy it is to own one.



Nothing Runs Like A Deere

HUTCHINSON FARM SUPPLY INC.

GROUND CARE EQUIPMENT

RR#2, Stouffville, Ontario

Bus: (905) 640-2692 Fax: (905) 640-2994

REBATE OFFERS END DECEMBER 1

RIDE WITH SANTA

Friday, November 28th 4:00 p.m. - 7:00 p.m.
 Saturday, November 29th, December 6th, 13th, 20th 11:00 a.m. - 4:00 p.m.
 Sunday, November 30th, December 7th, 14th, 21st 11:00 a.m. - 4:00 p.m.

Enjoy an old fashioned horse and wagon ride down Stouffville's Main Street
PICK-UPS WILL BE ENROUTE

The Merchants of Stouffville Wish You and Your Family a "Safe & Happy Holiday Season"

SPONSORS:

- | | | | | |
|-----------------------|-------------------------|-----------------------|----------------------------------|--------------------------|
| Freckles Collectables | Flanagans Folk Art | Inside Out Decorating | Markham Stouffville Credit Union | Betz Pools |
| Reids Consignment | I.D.A. Drugstore | This and That | Stouffville & Uxbridge Co-op | Farquharson Real Estate |
| John Lords Used Books | Stouffville Flower Shop | Ann's Fabric | Stouffville Furniture | Rose-Glen Fitness Centre |
| Crystal Jewellers | I.G.A. | Fullertons Place | Stouffville Travel Centre | Tribune |
| Arts Aglow | Basically Bagels | Beefeaters Restaurant | Houston Ford Mercury | Stomark Rentals |