

ECONOMIST & SUN/TRIBUNE

**NOTICE**

"In the event of a POSTAL STRIKE, payments may be arranged by phoning our office at 905-294-2200. Payments may also be made at our offices at:

9 Heritage Rd., Markham,  
6244 Main St., Stouffville,  
88 Brock Street, Uxbridge

\$2 off admission for you  
and each friend with you to  
Canada's original only \$6.00 each



Christmas Fest Free Parking • Door Prizes • Entertainment  
Friday 10<sup>am</sup> - 9<sup>pm</sup>  
Sat. & Sun 10<sup>am</sup> - 5<sup>pm</sup>  
NOV. 14-16  
MARKHAM FAIRGROUNDS  
McCowan Road  
7 Km. North of Hwy. 7

**Bethlehem Live a popular tradition**

Some 50 Markham and Stouffville district churches are sharing in one way or another for the presentation over the next two weekends of Bethlehem Live! '97. This special Christmas feature, now in its fifth season, has become a popular local tradition.

Many of the churches will have people participating as members of the cast. More than 140 people in period costume, including 12 babies and their parents, are required for the re-enactment of the Christmas story.

Others will or have served behind the scenes in costume and prop preparation, publicity, parking, crowd control, the serving of refreshments, etc., etc. Those looking after parking are ably assisted by members of the Stouffville Lions Club.

Bethlehem Live! '97 is an outdoor re-enactment of the trip to Bethlehem that Mary and Joseph would have taken almost 2,000 years ago, encountering the kinds of people along the way that Mary and Joseph also might have met. Persons attending will be grouped into "families" of 15 for their trip to Bethlehem. Interaction with soldiers, prophets, shepherds and wise men will occur along the route.

Every attempt is made to take participants out of the 20th Century to get the feel of actually being in the first century. Even the lighting is all by natural flame.

Since the evening walk is outdoors, those attending are urged to dress warmly.

The presentation runs from 6 to 9 p.m. nightly, Thursday through Sunday, November 20 to 23 and 27 to 30.

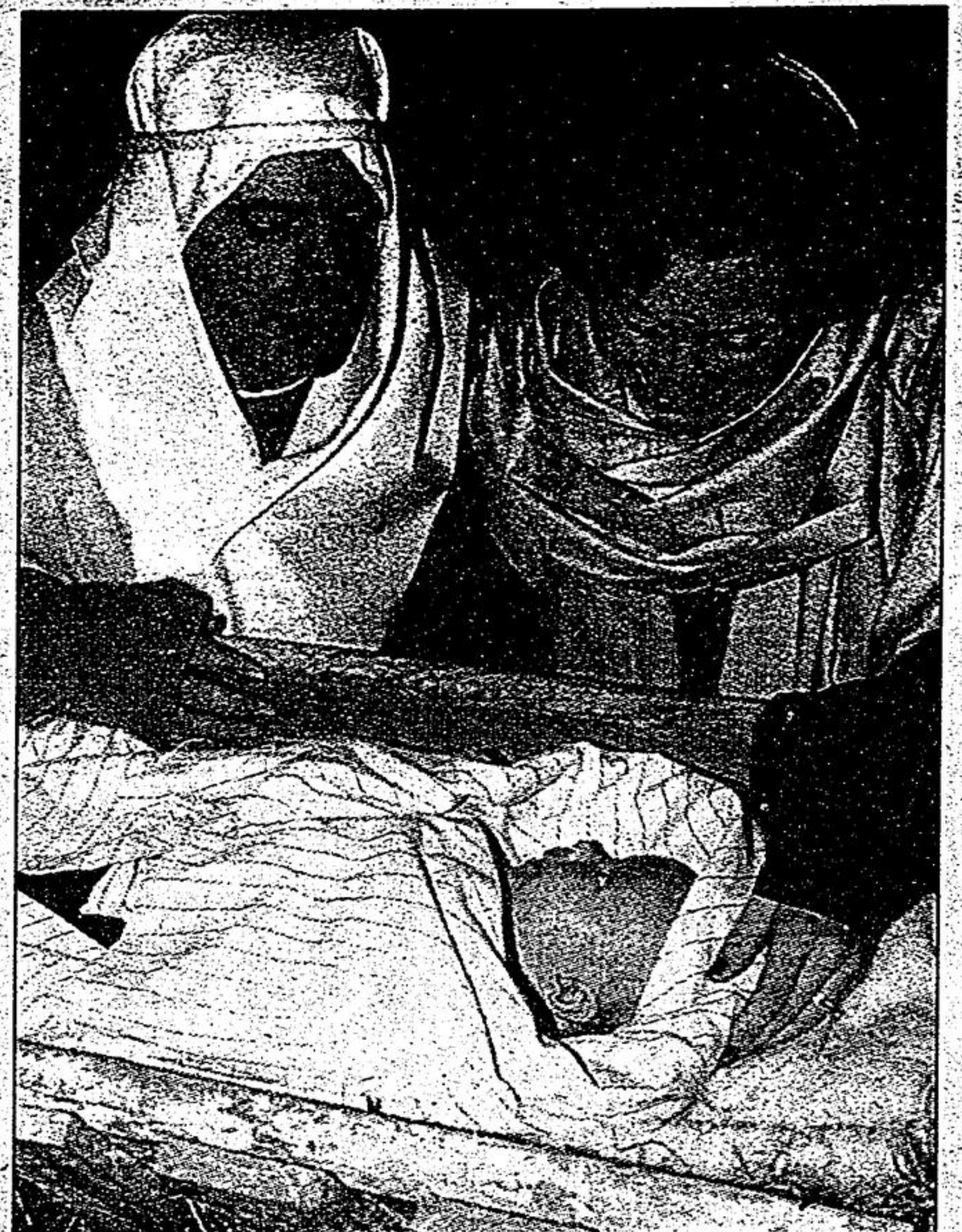
Staging is on the back lot of Christian Blind Mission Int'l. Parking is at the Springvale Baptist Church, 3701 Stouffville Rd., just east of Kennedy Road, from which people are shuttle-bused to the Mission site.

Approximately 1,000 people are expected each night with busloads from across southern Ontario.

A donation of \$2 per person or \$5 for families is requested.

In case of inclement weather please call 640-6464 to

determine that Bethlehem Live! '97 is being conducted. Don't let your family miss this very special event. It's a great way to start the Christmas season.



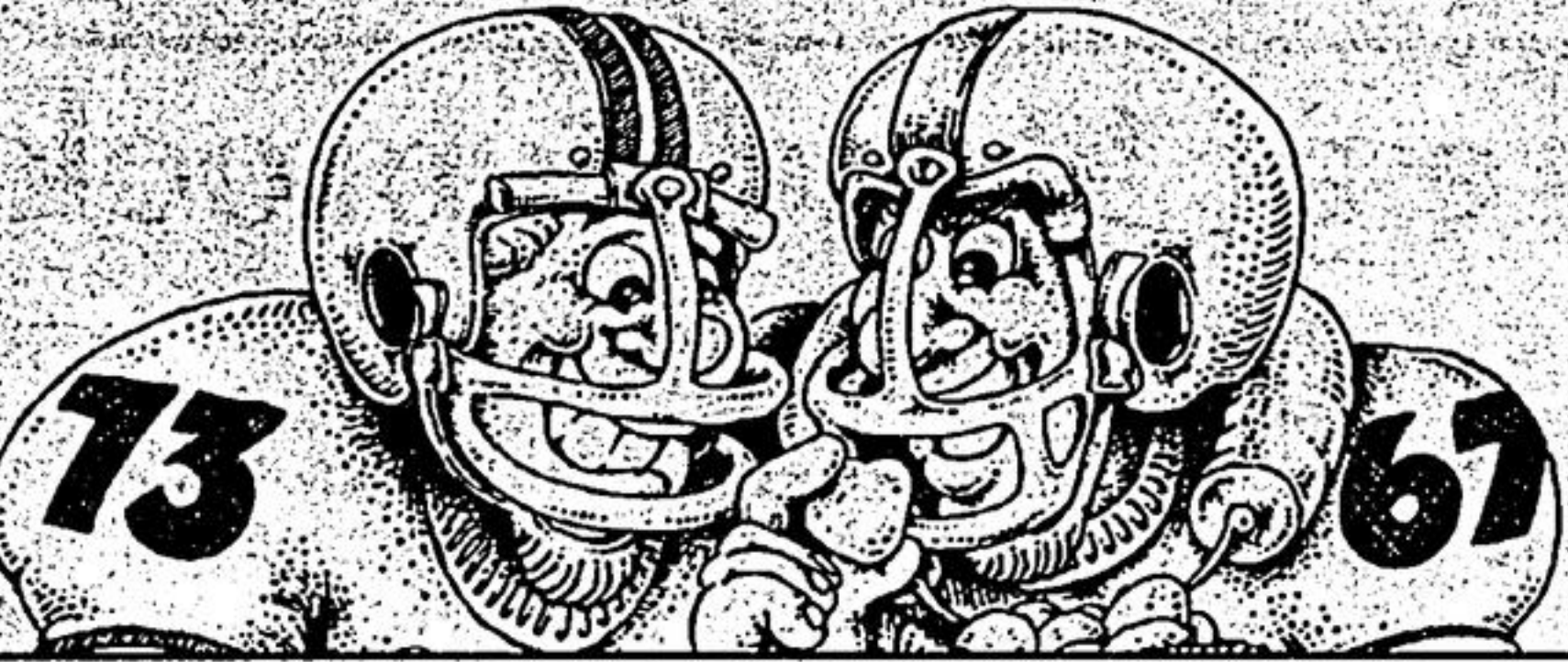
NO ROOM AT THE INN: ...Arman and Diane Stover in the roles of Joseph and Mary with baby Hannah as Jesus in a recent production of Bethlehem Live.



202 Main St., Unionville (905) 470-6955

**GREY CUP BASH  
SUN., NOV. 16th**

Hip of Beef Special \$4.95



**EMBASSY SUITES**

Offers a Fresh Approach To Your Dining Experience in the Unionville Cafe

**Christmas In Style**

Plan To Celebrate The Holiday Traditions By Indulging in Our Pre-Festive Christmas Luncheon Buffet  
November 17th - December 24th

Our Pre-Festive Christmas Dinner Menu  
November 24th - December 24th

Christmas Day December 25th  
A Fantastic Christmas Day Brunch and Dinner

New Year's Eve December 31st  
A Splendid Five Course New Year's Eve Dinner and Dance  
(reservations recommended)

Sunday Evenings Only  
Savour Ahi's Best

A Succulent Prime Rib Roast Beef Dinner

Don't Miss Out On Our Freshly Baked Or Desserts (905) 470-6955

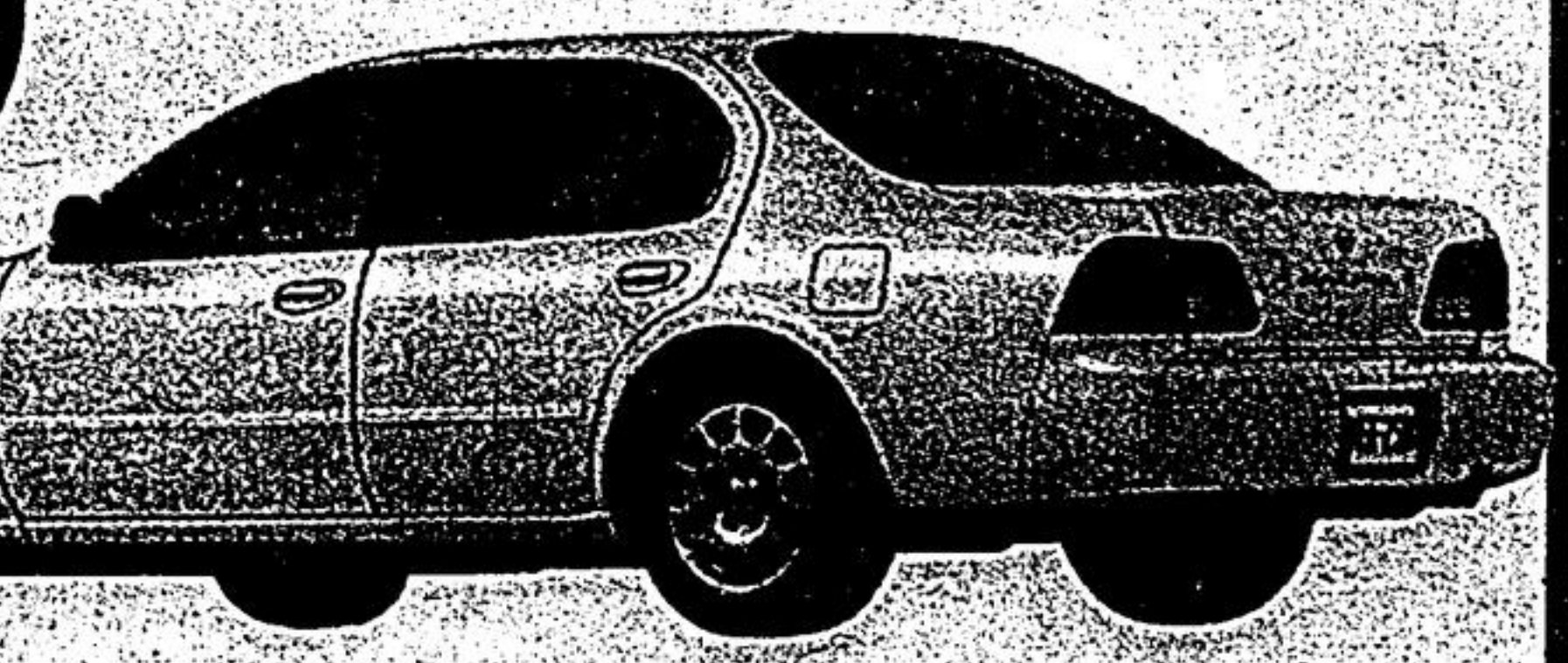
The '98s are here and love is in the air at  
**VILLAGE**

NISSAN

**THE 1998 NISSAN MAXIMA**

FULLY EQUIPPED WITH OVER 60 STANDARD FEATURES INCLUDING  
• 190-HP DOHC • Auto • Climate Control • Air • AM/FM Stereo w/Cassette & CD, 6 speakers, 100-watt max. output • Power Everything • Keyless Remote Entry w/Security System • Dual Air Bags • 8-Way Power Driver's Seat • Heated Front Seats & More.

\$349\*  
for 3 months



**THE 1998 PATHFINDER CHILKOOT**



\$369\*  
for 3 months

FULLY EQUIPPED WITH OVER 60 STANDARD FEATURES INCLUDING  
"Shift-On-The-Fly" Part Time 4-Wheel Drive • Large P265/70R 15 All-Season Tires • Air • 4-Channel Anti-Lock Braking System • Limited-Slip Differential • Premium AM/FM Stereo w/Cassette, 6 Speakers, 100-Watt Max. Output • Power everything • Carbon-Fibre Instrument Panel Appliqué • Fog Lights • Dual Airbags • Rear Air Deflector • Electronic Digital Compass • Ambient Temperature Display and much, much more.

Life is a journey. NISSAN Enjoy the ride.

4600 Hwy. #7  
at Kennedy Rd. by pass,  
Markham

**VILLAGE**  
NISSAN

(905)  
477-3337

\*Limited-time offers. Special, No-Nonsense, 36-month leases on '98 Maxima GXE (URG78 CKPP), A.I.R. 5.9%, \$349 a month with down payment \$2,949 or equivalent trade. Pathfinder Chilkoote Trail (5CRG58 AA00), A.I.R. 6.8%, \$369 a month, with down payment \$2,676 or equivalent trade. 1st payment \$349 on Maxima, \$369 on Pathfinder Chilkoote Trail. Both require security deposit of \$425 due at lease signing. Option to buy at lease end (Maxima \$18,377; Pathfinder Trail \$22,410) based on max. of 60,000 km. Additional km. charge of \$0.08/km. If applicable. All offers through Nissan Canada Finance Inc. O.A.C. and exclude freight, P.D.I., license, insurance, and taxes. ©1997 Nissan North America, Inc.