

# Dunkeld wants to see 40 kilometre limit on in-town roads

A speed limit of 40 kilometres per hour on Thicketwood Drive has been approved by council and Ward 4 councillor Cliff Dunkeld hopes that limit will be extended to all residential streets in the community next year.

The initiative is part of new safety program called Road Watch, a citizen's group which is being set up to encourage residents to follow the rules of the road. Road Watch targets motorists who speed, run red lights and fail to stop for school buses or stop signs.

"I think it should be 40 on the residential streets, because if it's 50, drivers go 60," said Dunkeld. Council has set aside funds in the 1998 budget to cover the cost of information signs advising motorists that the speed limit is 50 kph, unless otherwise posted. "We are waiting for a report to come in from Road Watch in Caledon and they are going to send us a copy," said Dunkeld.

For more information on Road Watch, call 640-1204.

~ Joan Ransberry



TOWN OF WHITCHURCH-STOUFFVILLE

## TENDER WS-97-25

Sealed Tenders, in the envelope provided, clearly marked as to contents, will be received by the Clerk's Department, 19 Civic Avenue, P.O. Box 419, Stouffville, Ontario L4A 7Z6, until 3:00 p.m. local time:

**THURSDAY, DECEMBER 18, 1997**

for a proposal to provide **General Insurance and Risk Management Services** for 1998 for The Corporation of the Town of Whitchurch-Stouffville.

Tender documents may be obtained from the Clerk's Department at the abovementioned address between 8:30 a.m. and 4:30 p.m. local time, Monday to Friday. If further information is required, please contact E.E. Blackburn, Director of Finance (905) 640-1900 or 895-2425.

The Corporation of the Town of Whitchurch-Stouffville reserves the right to accept or reject any tender and also reserves the right to accept other than the lowest tender.

Join us for a fantastic event at The Latham Gallery's

## Art Auction

and

## Silent Auction

SATURDAY, NOVEMBER 15, 1997

Hors d'oeuvres \* desserts \* Cash Bar

7:30 p.m. Silent Auction Opens \* 9:00 p.m. Art Auction Begins!

### Art Auction

Original works of art and hand crafts by leading local artists. Paintings, prints, mixed media, sculpture, photography and more!

Preview: November 9-15.

### Silent Auction

Fabulous items donated by local businesses. Great discounts, services, souvenirs and gift items. Bidding begin November 9.

TICKETS: \$15 Tickets are limited.

The Latham Gallery at the Whitchurch-Stouffville Public Library

6240 Main Street, Stouffville (905) 640-2395

Held under the authority of the Ontario Liquor Licensing Board

FREE SOUP & GRAVY



6242 MAIN ST. STOUFFVILLE

## BURGER DEAL

Purchase: All 17.95 plus taxes  
2 - 1/2 LB. Homemade Burgers  
2 - 1/4 LB. Homemade Burgers  
4 order of fries  
4 regular soft drinks  
ONE FREE SOUP + CUP OF GRAVY

Hours: Mon. - Wed. 7 a.m. - 7 p.m.  
Thursday 7 a.m. - 8 p.m.  
Friday 7 a.m. - 9 p.m.  
Saturday 8 a.m. - 4 p.m.  
Sunday 9 a.m. - 4 p.m.

NORTH DURHAM HEALTH SERVICES INC.



## Lactation Counselling Clinic (Uxbridge Site)

offering

Breastfeeding Counselling and Support

Clinic hours Monday, Wednesday and Friday

9:00 a.m. - 3:00 p.m.

(subject to change)

Clients are encouraged to call for an appointment at (905) 852-9771 Extension 229

Staffed by a Maternal - Newborn Nurse and International Board Certified Lactation Consultant



PORT PERRY PLAZA (905) 985-9777 FAX 985-9161

Member Durham Region & Lindsay Real Estate Boards

CALL TOLL FREE 1-800-448-1056



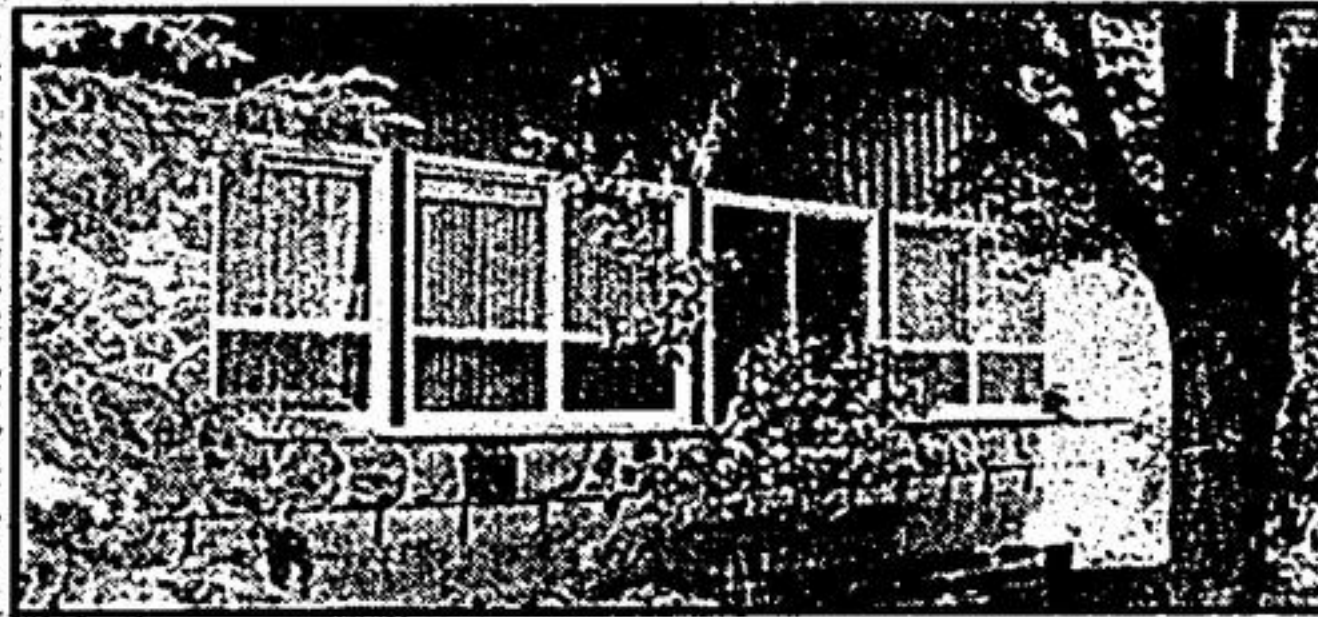
### ROBINGLADE ESTATES - PORT PERRY

Quality custom design, custom built - only seeing is believing! Unique kit. that women dream of, large living/dining room combination with cathedral ceilings, floor to ceiling brick fireplace. Gorgeous master bdrm. with 5 pc. ensuite with corner tub. All bdrms. have Jacuzzis ens. & w/closets. Mn. flr. laundry, 2 w/o's to lge. deck. Ceramic tile. 3 car garage on lge. lot o/l Lake Scugog. Come see all the extras. You'll be impressed! Over 3200 sq. ft. Asking \$329,000.



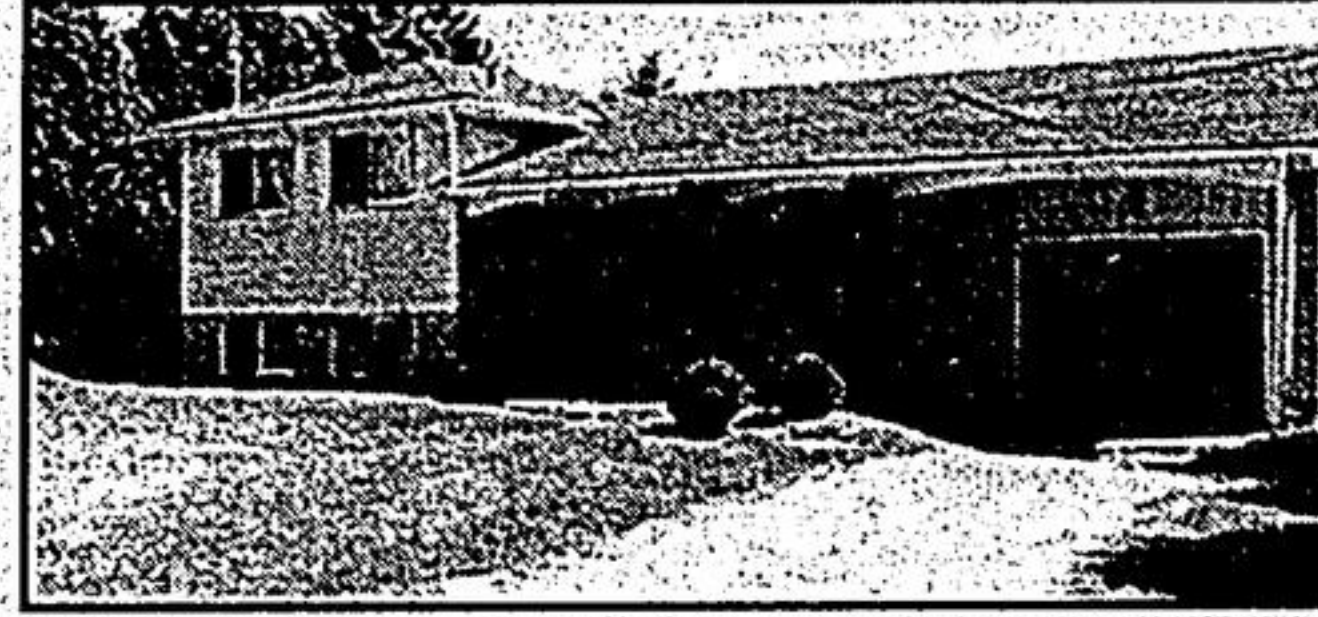
### DESIRED OSHAWA AREA "ONLY SEEING IS BELIEVING"

4,000 sq. ft. architect's dream home. Incredible master bedroom. Huge eat-in kitchen. Main floor living room with brick fireplace overlooks indoor pool. Formal dining room overlooks gardens. Luxury in-law apartment with private entrance. Family rm. with bar for entertaining. Beautifully landscaped treed lot 82' x 155'. This home must be seen for appreciation. Call 905-985-9777 or toll free - 1-800-448-1056. Value plus. Asking \$339,700. for quick sale



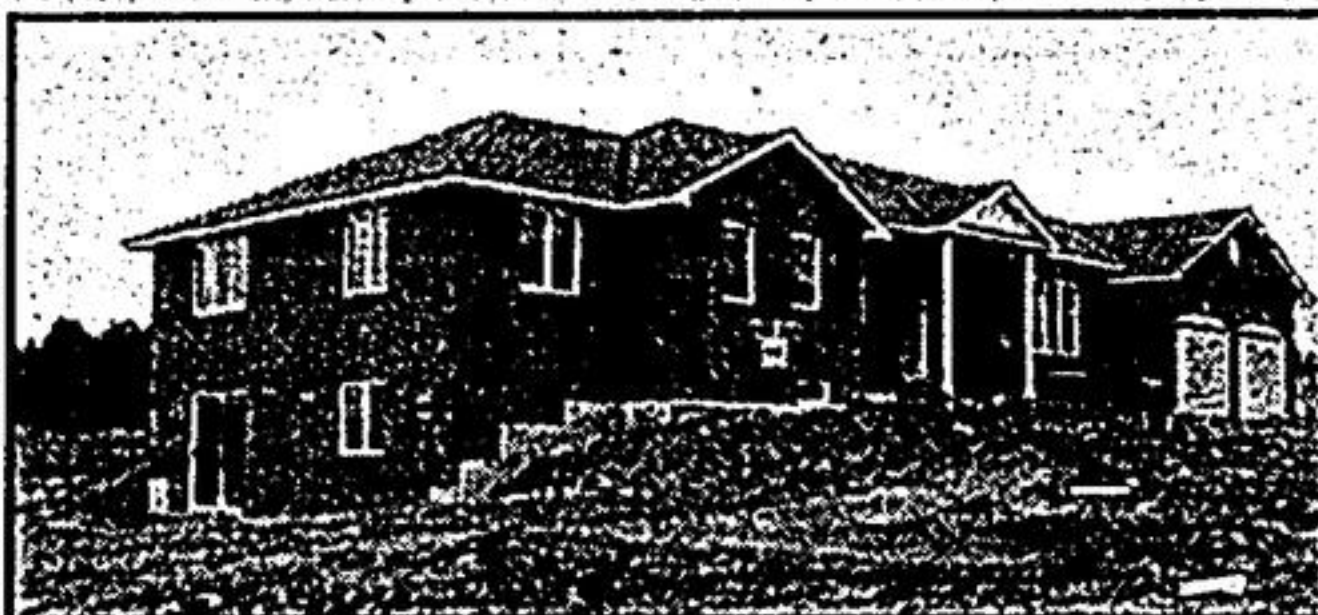
### INTRODUCING... CHARM & CHARISMA!

This home could be a dream come true! Open concept with fireplace and w/o to new deck, 3+1 bdrms., finished bsmt. with fireplace (possible in-law apartment), 2-4 pc. baths and a garage any man would love to own! Plus a yard that has a park-like setting and great fishing with lake access and a golf course close by! Don't wait - \$139,000.



### SUMMIT DRIVE - OVERLOOKING LAKE SCUGOG

3 bedroom brick and aluminum 4 level sidesplit on an 80' x 200' lot, with an eat-in kitchen, separate dining room and large living room. The 34' ft. rec room has above ground windows and is fully finished with drywall and pine wainscoting, and a propane airtight stove. This home shows extremely well throughout. Listed at \$139,900.



### PHASE II - SEAGRAVE HEIGHTS

New, custom designed and built 2,050 square feet. Spacious kitchen area overlooks main floor family room. Main floor laundry. Huge master with corner tub. Full walk-out basement. 1.25 acre scenic lot with view. Pick your own colours. Must be sold ASAP (gas heating & fireplace) Asking \$239,000.



### STOP AND LOOK!!

Complete family package in Seagrave - 3 bedroom raised bungalow - eat-in kitchen with walk-out to gardens, patio and fenced in ground pool, finished basement with 3 pc. bathroom, bedroom, rec room with airtight setting. All this on over one scenic acre. Asking \$179,700.

### THE BEST OF BOTH WORLDS - SUMMER & WINTER!

Scenic, private 100 acres offers privacy, wildlife and land to explore. Build your dream home on this beautiful recreational property. Asking \$59,900.

# HARPER'S FRESH MEATS NOW OPEN!!

Storemade Sausage \$2.69/lb.

Black Forest Ham \$3.99/lb.

In-Store Specials - Great Low Prices 640-4761

"The Harpers Look Forward to Serving You"

Say you saw it in the classifieds 640-2100