

Dance to Don Bowes band

Don Bowes Big Band and vocalist Jan Laurie kick-off a special fundraising evening filled with dancing, door prizes and more to help raise money for the York-Durham Heritage Railway.

Join the celebration of the Heritage Railway's first full-season of operation.

Dance the night away with music from the Don Bowes Big Band and Jan Laurie - all of whom have generously donated their time and music to the railway for the evening.

Dance will be held at the Uxbridge Arena and Community Centre, Saturday, Nov. 15, 8 p.m. to Midnight. Cost is \$20 per person, for ticket information and details contact 640-5132.

The railway offers passengers an entertaining nostalgic, exciting and scenic trip between the local communities. The tourist train winds 20 km (12.2 miles) through the rolling hills of the Oak Ridges Moraine and some of the most scenic terrain in Ontario showing a little piece of history that is just a 40-minute drive from

ENTERTAINMENT

Toronto. The York-Durham Heritage Railway was incorporated in 1990 and achieved charitable status in 1991. The association is run by the efforts of 150 member volunteers and friends of the railway. Financial support has been received from the Government of Ontario, the Township of Uxbridge, the Town of Whitchurch-Stouffville, local businesses and private donations.

JUST LISTED!!!



SECLUSION AMONG THE TREES

Immaculate Panabode log home nestled among gorgeous dry, treed and private 10 acres, West Uxbridge. Features include 2 fireplaces, cathedral ceilings, bright w/o basement, oversized double garage. Won't last at only \$278,500.



1ST CLASS REAL ESTATE
(905) 852-9765 (905) 294-2796
24 hr. pager

VICKI HOPKINS
Sales Representative



TOWN OF WHITCHURCH-STOUFFVILLE

1997 MUNICIPAL ELECTIONS NOTICE

Municipal Election will be held on:

ELECTION DAY:

MONDAY, NOVEMBER 10TH, 1997 from 10:00 a.m. to 8:00 p.m.

By now all eligible Voters should have received a Card in the mail that provides details as to the location of the Voting Place in your area. If you have not received a card, kindly call the Town of Whitchurch-Stouffville Clerk's Department for details at (905) 640-1900 or (905) 895-2423. Please note that Voters can be added to the Voters' List and/or have their electoral information amended at the Voting Place. Make sure that you bring proper identification with you which includes your qualifying address. All Voting Places are accessible to the physically challenged. We encourage Voters to vote early in order to avoid congestion and delays at the Voting Places.

ADVANCE VOTES:

- Saturday, November 1, 1997 between 10:00 a.m. and 8:00 p.m.**
- Whitchurch Centennial Community Centre (also known as the Ballantrae Community Centre), 5592 Aurora Road, Ballantrae (for Wards 1, 2 and 3 ONLY)
 - Whitchurch-Stouffville Municipal Office, 19 Civic Avenue, Stouffville (for Wards 4, 5 and 6 ONLY)
- Monday, November 3, Tuesday, November 4, and Wednesday, November 5, 1997 between 4:00 p.m. and 8:00 p.m.**
- Whitchurch-Stouffville Municipal Office, 19 Civic Avenue, Stouffville (for all Wards)

QUALIFICATION OF A VOTER

To be eligible to vote, the following criteria must be met during the qualification period of September 2nd and Election Day (November 10, 1997):

- be a resident in the municipality or be a non-resident owner or tenant of land in the municipality or the spouse of such owner or tenant;
- be a Canadian Citizen on or before November 10, 1997; and
- be at least 18 years of age

- Please note:
- A corporation DOES NOT qualify as a Voter. The owner of a business, that is NOT a corporation, DOES have the right to vote. However, if the owner of a business also resides in the municipality, then he or she must vote where he or she resides.
 - A British Subject IS NOT entitled to vote.
 - A person who changes residence from one municipality to another during the qualification period (as noted above), is entitled to be a resident Voter ONLY in the local municipality where he or she resides LAST.
 - Non-resident Voters ARE NOT eligible to vote for school board trustees.

OFFENCES, PENALTIES AND ENFORCEMENT

A person is guilty of an offence and liable, on conviction, to a fine or not more than \$5,000, if her or she,

- votes without being entitled to do so;
- votes more times than the Municipal Election Act allows;
- votes in a voting place in which he or she is not entitled to vote;
- induces or procures a person to vote when that person is not entitled to do so;
- having appointed a voting proxy that remains in force, votes otherwise than by the proxy;
- having been appointed a voting proxy, votes under the authority of the proxy when the elector has cancelled the proxy, is no longer entitled to vote, or has died;
- before or during an election, publishes a false statement of a candidate's withdrawal
- furnishes false or misleading information to a person authorized to obtain information;
- without authority, supplies a ballot to anyone;
- delivers to the deputy returning officer to be placed in a ballot box a paper other than the ballot the deputy returning officer gave him or her;
- takes a ballot away from the voting place;
- at an election, takes, opens or otherwise deals with a ballot, a ballot box, or a book or package of ballots without having the authority to do so;
- attempts to do something described in clauses (a) to (l)

When a person is convicted of an offence as noted above, and the presiding judge finds that the offence was committed knowingly, the offence also constitutes a corrupt practice and the person is liable, in addition to any other penalty, for imprisonment for a term of not more than six months.

WHERE TO VOTE ON ELECTION DAY

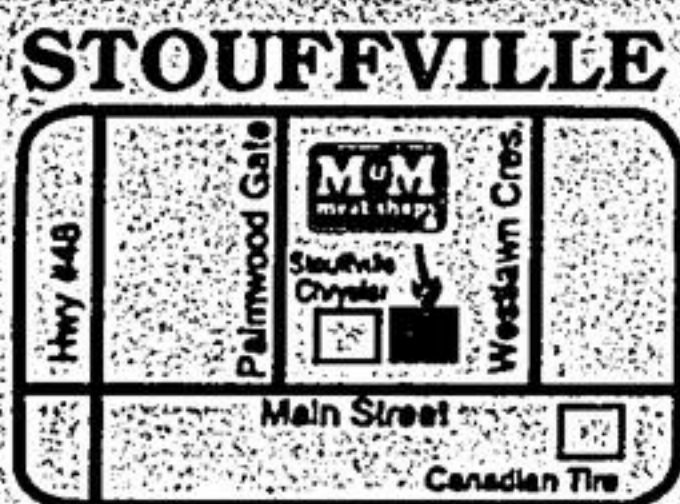
Ward #	Voting Subdivision #	Location
ONE	101 & 102	York Region Transportation & Works Department, 16042 Woodbine Ave.
	103 & 104	Whitchurch-Stouffville Museum, 14732 Woodbine Ave., Vandorf
	105 & 106	Hanson's Country Dining, 3721 Aurora Road (south side)
TWO	201 through to 208	Whitchurch Centennial Community Centre, 5592 Aurora Rd.
THREE	301 & 302	Whitchurch Highlands Public School, 2954 Bloomington Road
	303 through to 306	Christian Blind Mission, 3844 Stouffville Road
FOUR	401 through to 403	Whitchurch-Stouffville Recreation Complex (lounge) 12483 Ninth Line
	404	St. Mark's School, 333 Glad Park Avenue
	405 & 406	Parkview Village, 12184 Ninth Line
	407	St. Mark's School, 333 Glad Park Avenue
	408	Parkview Home, 481 Rupert Avenue (roving voting place)
FIVE	501	Sleepy Hollows Country Club
	502	Stouffville Pentecostal Church, 6853 Main Street
	503 & 504	St. Mark's School, 333 Glad Park Avenue
	505 through to 507	Stouffville Missionary Church, 6500 Main Street
	508	Whitchurch-Stouffville Public Library, 6240 Main Street
	509 & 510	St. Mark's School, 333 Glad Park Avenue
SIX	511	Green Gables Manor, 13621 Ninth Line (roving voting place)
	601	Stouffville Pentecostal Church, 6853 Main Street
	602 & 603	Summitview Public School, 6551 Main Street
	604	Buckingham Manor, 6457 Main Street
	605	Summitview Public School, 6551 Main Street
	606 through to 608	Parkview Village, 12184 Ninth Line

Michele Kennedy
Town Clerk and Returning Officer



5812 Main Street
642-9334

OPEN 7 DAYS A WEEK



LOOK FOR OUR FLYER IN TODAY'S NEWSPAPER



6236 Main Street
(Next to Town Library)
Stouffville, Ontario
Tel: 905-642-9724

\$2.99

Bagel with Cream Cheese & a 600ml COKE

EVERYDAY IS SENIORS DAY 10% OFF
WEDNESDAY IS BAGELDAY \$4.25 PER DOZ

3 FREE BAGELS

Buy 6 bagels at regular price- Get 3 bagels FREE

Not valid on Wednesdays
With this coupon - Expires NOV 30/97
Not valid with any other offer

STORE HOURS
Mon: 6am-6pm
Tue-Fri: 6am-8pm
Sat: 7am-5pm
Sun: 8am-4pm



\$1.25 OFF

Dozen Bagels & a Tub of Cream Cheese
Reg. \$8.66 now \$7.41

Not valid on Wednesdays
With this coupon - Expires NOV 30/97
Not valid with any other offer