

LOOK HERE!
WACO
 HICKORY SQUARES
 BAVER 4000 Jr
\$169.99
VALUE
\$199.99
PLAY IT AGAIN
SPORTS
 Greater Toronto Plaza 16th & Hwy 48 471-9632

THE TRIBUNE

THE SUBWAY
 A SANDWICH SHOULD BE...
99¢ SUB
 With the purchase of any Sub of equal or greater price and a medium soft drink.
 Limit one coupon per family visit.
 Expires Oct. 30, 1997.
 5812 Main St. W.

Vol. 109, No. 68.

Thursday, October 23, 1997

40 Pages .50¢ (GST incl.)

A Metroland Publication Serving Whitchurch-Stouffville Since 1888

Gardening Page 23

Global Vision

Sports page 26

Teachers to walk out Monday

MIKE ADLER
 Staff Reporter

Don't go to school on Monday — your teachers won't be there, their union leaders have announced.

Unless the government changes its education bill dramatically, teachers will launch a province-wide political protest that will last as long as necessary," Eileen

Lennon, president of a federation representing all Ontario teachers in publicly-funded schools vowed yesterday morning.

She advised school boards to close schools if teachers walk out for an illegal strike and urged parents to arrange for their children to go somewhere else.

"This government has left us no choice," Lennon said during the announcement, but added the walkout is "not inevitable" if

teachers' unions and the province meet for "meaningful" talks.

Teachers' federations in York Region predicted most schools would be closed Monday morning, and that others would close soon after.

Although principals and vice-principals can make a decision to stay inside, most will wind up joining the picket lines outside, spokespersons for local Catholic teachers and public high school

teachers said.

Most school administrators — all are members of teachers' unions — will show up for work on Monday, but some will refuse, predicted Paul Fassel, president of an association representing public elementary school principals and vice-principals.

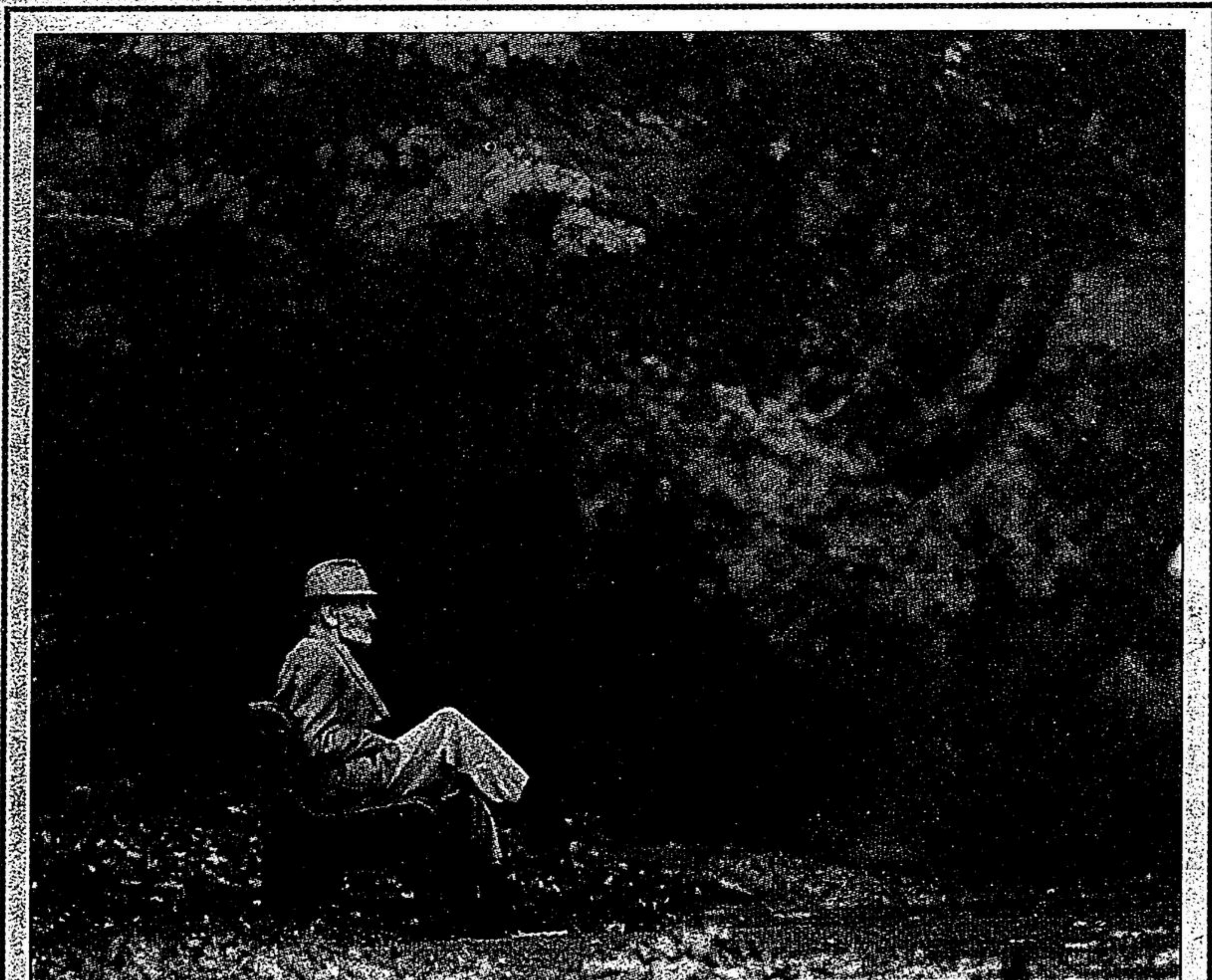
"I think some of them feel they have a right to protest and show their support for public education as well," said Fassel, principal of

Ramer Wood Public School in Markham.

And principals could close many schools because of safety concerns, he said. Thirty students, for example, could be safely supervised by a principal and vice-principals; 100 likely could not, said Fassel.

Both local boards say they will keep schools open in a strike only if it is safe. Parents who can keep

■ Please see page 3 ■



A BENCH WITH A VIEW: A resident of Green Gables Manor enjoys a few rays of sunshine and the fall colours in the lane behind the residence on Ninth line just south of Bloomington Road on Tuesday.

Photo by SJOERD WITTEVEEN

Family's grief shared across the community

The flag is flying at half mast at Stouffville District Secondary School in memory of a Grade 12 student who died Tuesday evening.

Students and school staff joined family and friends in mourning the

loss of David Giles, 17, who died at his home on William Street.

The Tragic Events Team from the York Region Board of Education attended the local high school

■ Please see page 3 ■

@random

Concert still on!

■ The fifth annual Student Music Scholarship Concert involving nearly 600 local students will not allow the threat of a teacher strike to interrupt its show.

The production will be held, as planned, tomorrow night at 7 p.m. at SDSS.

■ Don't miss this weekend's 20-per-cent-off sale at Gail

Pasternack Pottery Studio sale Saturday and Sunday from 10 a.m. to 4 p.m.

Discounts are for this weekend only featuring seconds at reduced prices.

The studio is located at 5322 Aurora Road, east of Hwy. 48 in Ballantrae.

Call 642-8753 for more information.

What's inside

- Letters p. 4
- Entertainment p. 8
- Wheels p. 13
- Sports p. 26
- Classified p. 27

newsline
 640-2100

FRIGHTENINGLY GOOD DEALS CONTINUE

NORTH POINTE
 CHEVROLET · OLDSMOBILE

1998 MALIBU

The Little Dealership with a Big ♥
 5336 Highway 7
 (Just East of McCowan)
 294-1440
 Toll Free: 1-800-892-2209
 www.autonet.ca/northpointe

See Saturdays Paper for full details

Service Hours
 Mon-Fri 9:30 a.m. - 6 p.m.
 Sat 9 a.m. - 5 p.m.

Sale Hours
 Mon-Thu - 9 a.m. - 9 p.m.
 Fri - 9 a.m. - 6 p.m.
 Sat - 9 a.m. - 6 p.m.