

**Effective Estate Planning**  
with  
Lawyer & Chartered Accountant  
at  
Christian Blind Mission  
November 12th at 7:30 p.m.  
**Ross Dixon**  
FINANCIAL SERVICES  
RSVP Ken Prentice CFP  
at (905) 642-9507

# THE TRIBUNE

Vol. 109, No. 67

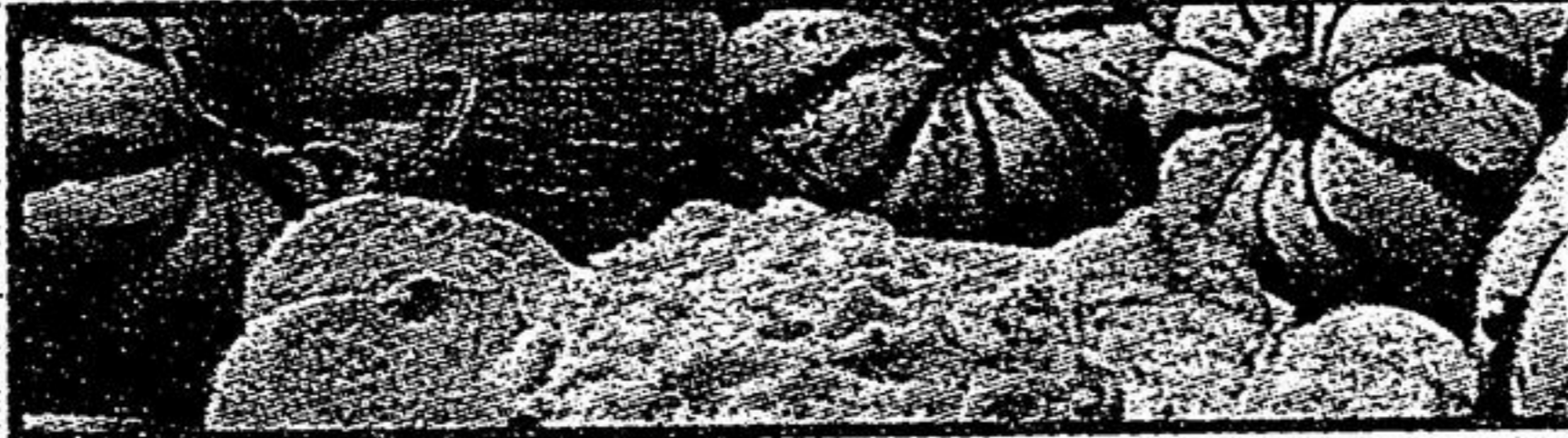
Tuesday, October 21, 1997

28 Pages .50¢ (GST incl.)

A Metroland Publication Serving Whitchurch-Stouffville Since 1888

**Estate Planning Seminar**  
October 23, 1997  
RSVP  
(905) 642-4540  
**MONEY CONCEPTS**  
The Money Management People  
642-4540

The Calendar:  
What's happening  
around town p. 17



Super  
Squash  
page 6

Sports  
page 18

## Mayoral race not humdrum

JOAN RANSBERRY  
Staff Reporter

The mayor's race in Whitchurch-Stouffville should be far from humdrum with the two candidates at seemingly opposite ends of the political spectrum.

Electors can choose experience or vote for a fresh approach when electing the next mayor, residents learned at Friday's all-candidates' meeting held at SDSS.

Incumbent Mayor Wayne Emmerson and challenger Mike Watson are very different. Emmerson's family has lived here for three generations. His is a familiar face. Challenger (Ward 2 Councillor) Mike Watson is young. At 32, his is a fresh face. While Emmerson said he'll stand on his record, Watson didn't pull any punches, questioning the mayor's record.

"The Town of Whitchurch-Stouffville lacks a mayor who is responsible and accountable as a leader," said Watson.

But Emmerson didn't bat an eye. "I am your practical down-to-earth citizen who wants common sense solutions to the problems of the community," he said.

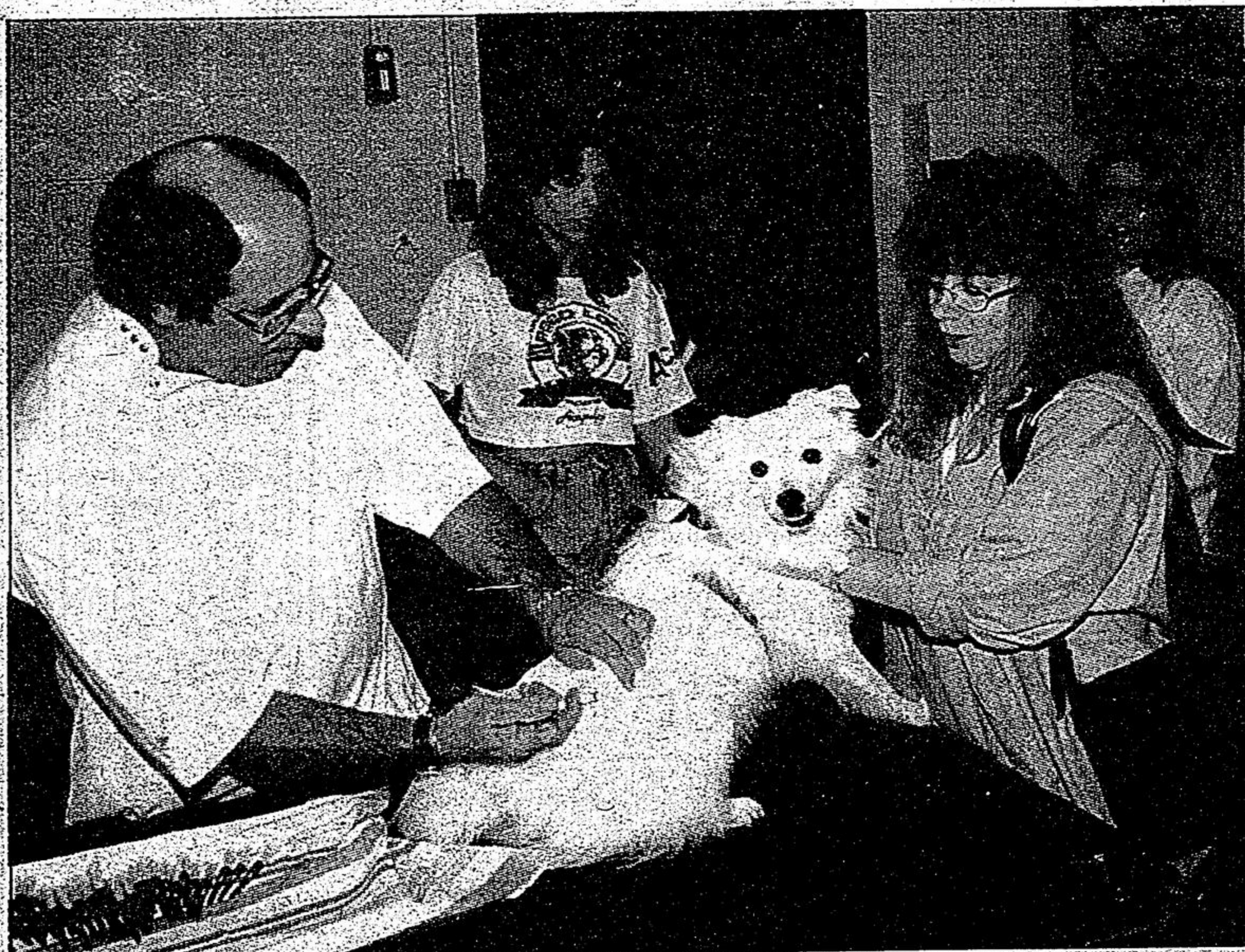
Emmerson then reminded the audience that with him in the mayor's chair for the past three years, there's been a "zero" increase in taxes

with no loss of services. In the same time, a second ice pad and a train station were built, the secondary plan was completed, and through a restructuring plan, the local hydro utility, with Emmerson as a member, now delivers the lowest hydro rate in Ontario.

As well, Emmerson said, he

### INSIGHT

■ Please see page 7 ■



**WORTH THE PINCH:** Lori Attack holds her pet Sprite lovingly as veterinarian Gary Gall administers a rabies shot at the Stouffville Veterinary Clinic on Main Street Saturday, one of two low-cost clinics in the Stouffville area. The other animal centre was Town and Country Animal Hospital. For more information about rabies clinics call York Region Health Services at (905) 895-4511.

Photo by SJOERD WITTEVEEN

## @random

News you can use

In Whitchurch-Stouffville municipal election campaigning is a private matter. For the record, the candidates' election campaign signs are not allowed on town property.

Election signs belong on private property only, stressed local bylaw officer

Keith Saunders

Also, all election signs must be removed within 48 hours of the Nov. 10 election.

Saunders reported that he's busy looking into allegations of election sign violations.

What's inside

- Comment p. 4
- Grapevine p. 8
- Sports p. 18
- Classified p. 20

newsline  
640-2100

## Move on to equip firefighters with life-saving defibrillators

JOAN RANSBERRY  
Staff Reporter

A move is on to equip local firefighters with life-saving equipment and the ability to massage the human heart back to life.

The life-saving device is called a defibrillator and since firefighters are often the first to arrive on the scene of an emergency, using defibrillators is could help prolong a life until medical emergency crews are

on the scene.

Whitchurch-Stouffville Fire Chief Bill Brown is in the process of preparing a report on the need for such a device. Defibrillators shock a cardiac arrest victim's heart into beating again.

Mayor Wayne Emmerson said the report is to include costs. A defibrillator costs about \$5,000, said Emmerson. "Of course, the ambulance has got them. We're looking at the need for the fire department," said Emmerson.

### STOUFFVILLE CANADIAN TIRE

## 24 ft. Aluminum Extension Ladder

#61-1062

Regularly \$149.99

# ON SALE FOR \$109.99

<b>AUTO</b>	<b>CENTRE</b>
Monday - Friday	8:00 a.m. - 8:00 p.m.
Saturday	8:00 a.m. - 5:00 p.m.
Sunday Closed	

<b>RETAIL</b>	<b>STORE</b>
Monday - Friday	8:30 a.m. - 9:00 p.m.
Saturday	8:30 a.m. - 6:00 p.m.
Sunday	10:00 a.m. - 5:00 p.m.