

**LOOK HERE!**  
**KABO**  
 Hockey Skates  
 BAUER 4000 JR  
**\$169.99**  
 VALUE  
**\$199.99**  
**PLAY IT AGAIN**  
**SPORTS**  
 GARDEN MARKET PLACE 1000 & Hwy 48 471-9653

# THE TRIBUNE

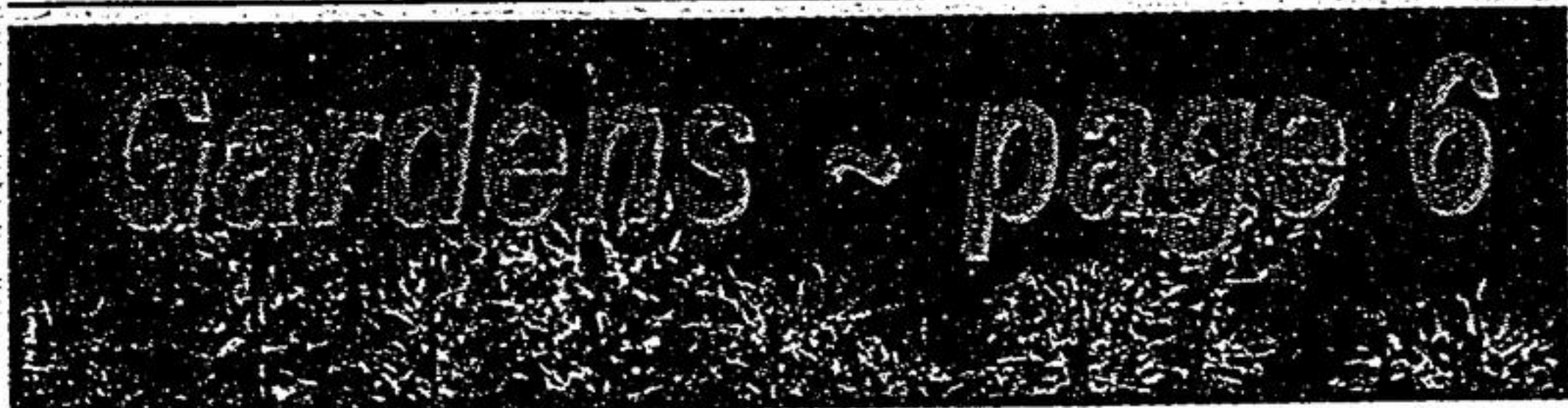
Vol. 109, No. 62.

Thursday, October 2, 1997

20 Pages - .50¢ (GST incl.)

A Metroland Publication Serving Whitchurch-Stouffville Since 1888

**THE SUBWAY**  
 A SANDWICH SHOULD BE  
**99¢ SUB**  
 With the purchase of any Sub of equal or greater price and a medium soft drink.  
 Limit one coupon per family visit.  
 Expires Oct. 30, 1997.  
 5812 Main St. W.



## Cheers and jeers for Ballantrae plan

**JOAN RANSBERRY**  
 Staff Reporter

The \$150-million adult community designated for Ballantrae went under public scrutiny Tuesday. Some people like it. Some don't.

As expected, concerns linked to sewage treatment and the impact on the new communal water system dominated the meeting held at the Ballantrae Community Centre. About 100 people heard how Schickedanz Bros. Ltd. hopes to

build the Ballantrae Golf and Country Club including an 18-hole championship golf course, a country club and between 700 and 900 homes on Hwy. 48 near Aurora Road.

About 60 homes will be built

### DEVELOPMENT

each year over a 15-year period. Each phase will be subject to reviews.

One area resident expressed a worry that the condominium-style community designed for over-50 empty nesters will end up being a "gate" community, thus not be part of the hamlet and not be welcoming to the existing residents.

Patricia Thomson said the proposal makes her feel "very exclud-

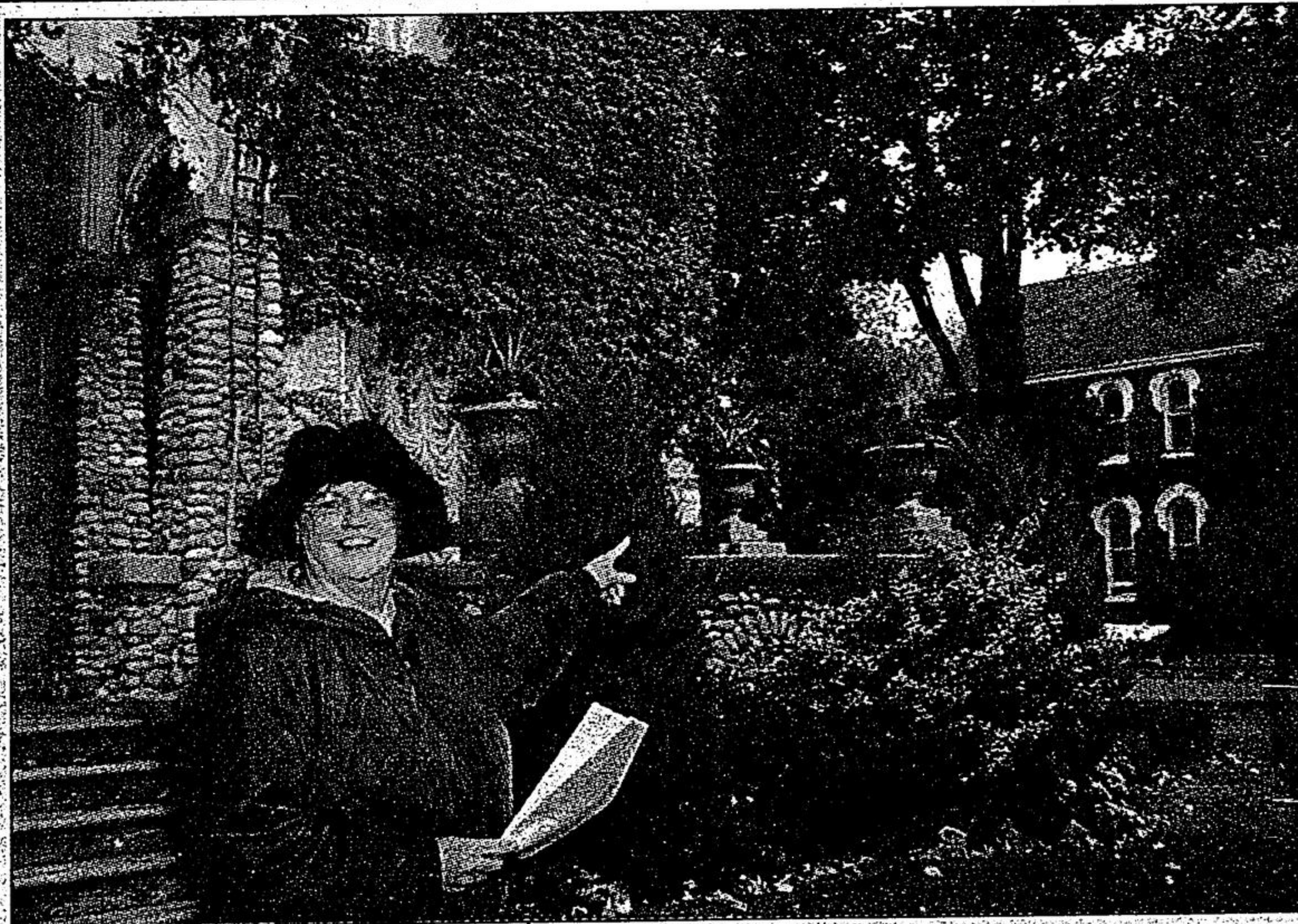
ed" and that it's "insulting" to boot. "This is a benefit to your community," Thomson said. "It is not a benefit to ours."

Mark Carroll said he's not convinced that the plan has enough environmental protecting elements.

Because of the serious issue of water and sewage treatment, Carol Davis said she'd like to see the project delayed until more study is done.

The project is, however, drawing

■ Please see page 3 ■



Ruth Burkholder points out one of the sites to be seen on the popular walking tour hosted by the Whitchurch-Stouffville Historical Society along Main Street. Residents are urged to join in the next tour, slated for Sunday afternoon.

Photo by SJOERD WITTEVEEN

## Walking the streets

Put on your walking shoes, bring the family, including the dog, and take part in a walking tour on Sunday, beginning at 1:30 p.m. at the railway station.

Oct. 5 marks the bi-annual Main Street tour sponsored by

The Whitchurch-Stouffville Historical Society.

Society officials will leading the walk-around on the north and south side of Main Street between the railway tracks and the Ninth Line.

The walk, expected to last about one hour, will not be strenuous.

For more information, call Ruth Burkholder at 640-7391 or Fenella Smith at 640-6418.

~Joan Ransberry

## Double whammy: taxpayers foot bill for pair of police chiefs

**KATHLEEN GRIFFIN**  
 Staff Reporter

York Region taxpayers will foot the bill for two police chiefs - at an annual salary of about \$134,000 - until at least Christmas, after paid leave for Bryan Cousineau was extended earlier this month.

That means Cousineau is being paid \$116,000, so far, for staying home.

"Under the legislation he maintains his position and his salary during the leave," said York Region Police Services Board member and Regional Councillor Bill Fisch. "And we are bound by the legislation, especially in these circumstances, where we have received no information whatsoever."

The police board had no choice in extending Cousineau's original three-month leave, for the third time, because the Ontario Provincial Police still hasn't wrapped up its investigation, he said.

And in the absence of formal criminal charges, the job still officially belongs to Cousineau.

Fisch admits it's frustrating, not only for taxpayers, but for the board as well, in conducting day-to-day business and planning for the future.

"It's quite frustrating from the perspective of the board and it's certainly not going as fast as we wish. All we can do is hope the investigation is completed shortly."

The OPP refuse to release

■ Please see page 3 ■

**BRING IT HOME TO HONDA** **NORTH MARKHAM HONDA** **With Our** **52 POINT SERVICE CLINIC** **Includes Oil & Filter Change & 52 Point Written Report** **\$39.95** **plus taxes.** **KEEP THE MOTOR Running** **Courtesy Shuttle Service Available** **Service Hours** **Mon., Wed., Thurs. & Fri. 7:30-5:30 pm** **Tues. 7:30-8:00 pm, Sat. 9:00-1:00 pm** **Call the Service Department for more details** **477-2451** **Committed to Serving you Since 1966** **North Markham Motors Ltd.** **4611 Hwy. #7, Unionville, Ontario** **Honda Vehicles Only**