

Stouffville trustee aims for Milliken

MIKE ADLER
Staff Reporter

Harry Bowes, in his ninth term as public school trustee for Stouffville, is seeking another term on the board — but in Milliken Mills.

The Stouffville resident said he filed nomination forms to be a candidate in Markham's Area 4 because no candidate had registered there, and somebody should run.

"If somebody comes up then I probably will withdraw," Bowes said yesterday. "I'm trying to get some action (happening) there."

But he said he will stand for the trustee spot if no one else has been nominated by Oct. 10, the last day candidates can file.

The area, which covers a territory south of Hwy. 7 and east of Hwy. 404, has its own incumbent, Ron Stevenson.

Stevenson, a four-term board veteran, who is still undecided about running again, said it was odd Bowes didn't talk to him before setting his sights on Milliken for this November's election.

"Isn't it a little early for him to stick his name in?" Stevenson asked yesterday.

Meanwhile, East Gwillimbury trustee Virginia Hackson has said she will become a candidate to represent Stouffville on the public board, and added that she has Bowes' support for this move.

A scaled-down board means the town will have to share its next pub-



HARRY BOWES

lic school trustee with East Gwillimbury.

"We had decided some time ago that we wouldn't run against each other," said Hack-

son, who planned to file her nomination papers today after meeting the presidents of Stouffville's school councils.

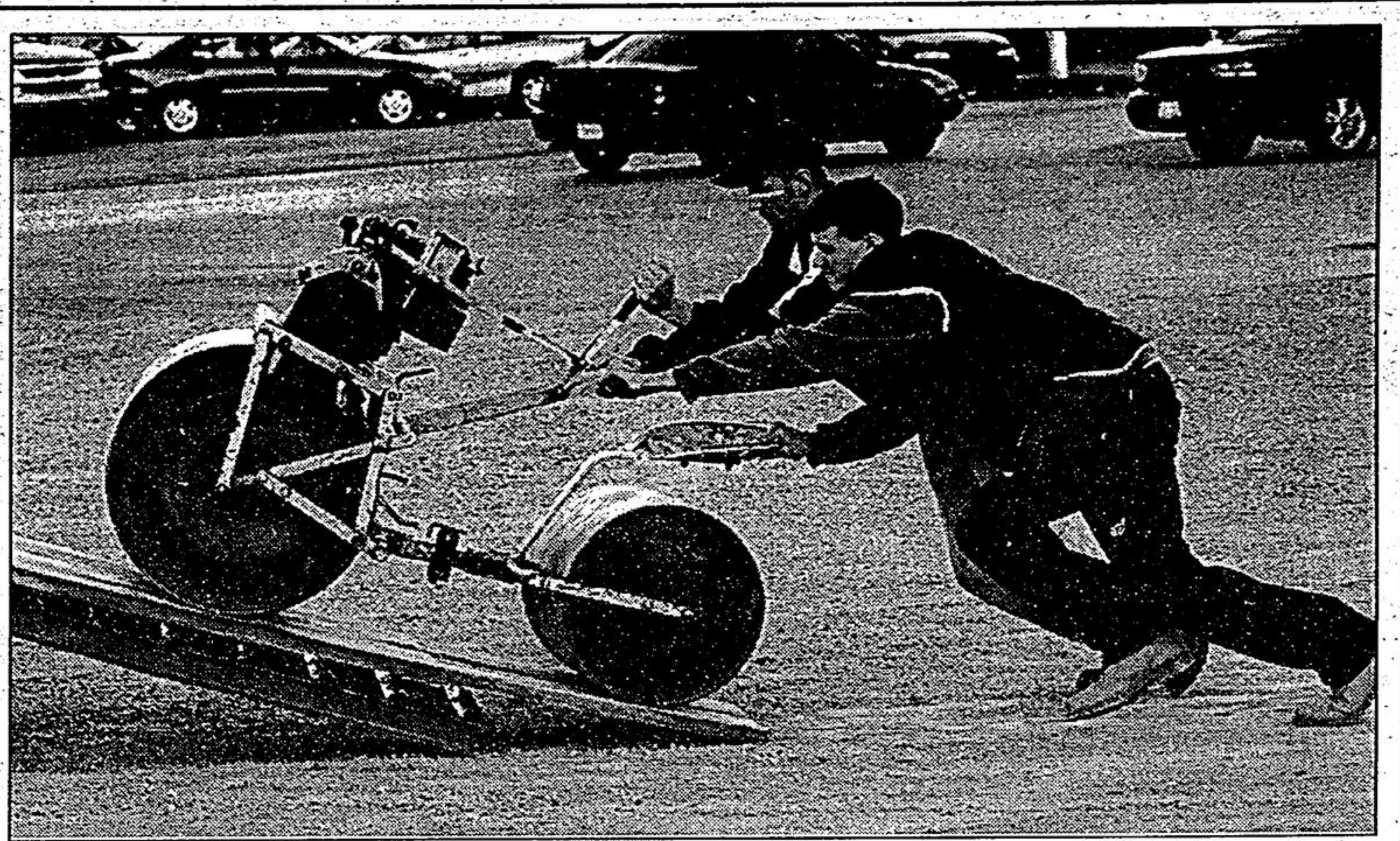
Only one person, incumbent Aurora trustee Elizabeth Crowe, has her papers in to become a separate board candidate for the area that now includes Stouffville.

Redistribution means Stouffville's Catholic trustee will drop the townships of Georgina and East Gwillimbury but take responsibility for Aurora and King.

The current Catholic trustee for Stouffville, Sean Pearce, can't run for re-election under new provincial rules because his wife is a teacher.

No one from York Region's francophone Catholic community has come forward to represent the region on a new French-speaking separate board.

Simone Abouchar and Anne-Marie Couffin have been nominated in North York to represent North York, Scarborough, and most of York Region — on another new board for French-speaking public school students.



STEAMROLLED: Darrell Lawrusik (back) and Derek Harrison, both of Jen-Dan Ltd., push a small steamroller up on the wagon with some effort at Stomark Rentals on Main Street on Tuesday.

Photo by SJOERD WITTEVEEN

Jones takes on Emmerson

■ From page 1 ■

Whitchurch-Stouffville is on the "verge of a mass explosion" said Jones. The growth will take in industry and commerce, said Jones.

"All of Whitchurch-Stouffville will benefit but it has to be done with proper planning and with great care," she said.

The quality of water in Mus-selman's Lake concerns her. She has asked the provincial government to take an active

role in checking out the lake water.

"Of course, I'm interested in the lake issue. It is important." Open government is critical to the running of a town, stressed Jones.

"If elected, I promise that there will be no closed-door meetings," she said.

Jones suggested that Whit-

POLITICS

church-Stouffville needs "more responsive" government.

"I'd like to see better communication between town officials and the people," she said.

Jones is married and the mother of a 19-year-old son.

Registered letters being sent on water hookups

■ From page 1 ■

In keeping with the rules of a registered letter, this means, 800 property owners must make a trip to the post office to pick up their letters.

The move to bring a communal water system to the hamlets came after health officials found many contaminated wells, thus posing a serious

health threat to the community at large.

Even though the multi-million dollar water system was approved by three levels of government, some residents reject it claiming that it's pointless to force homeowners who neither need nor want water to pay the individual cost to get connected to a system.

Santa Claus set to arrive in Stouffville on Dec. 6

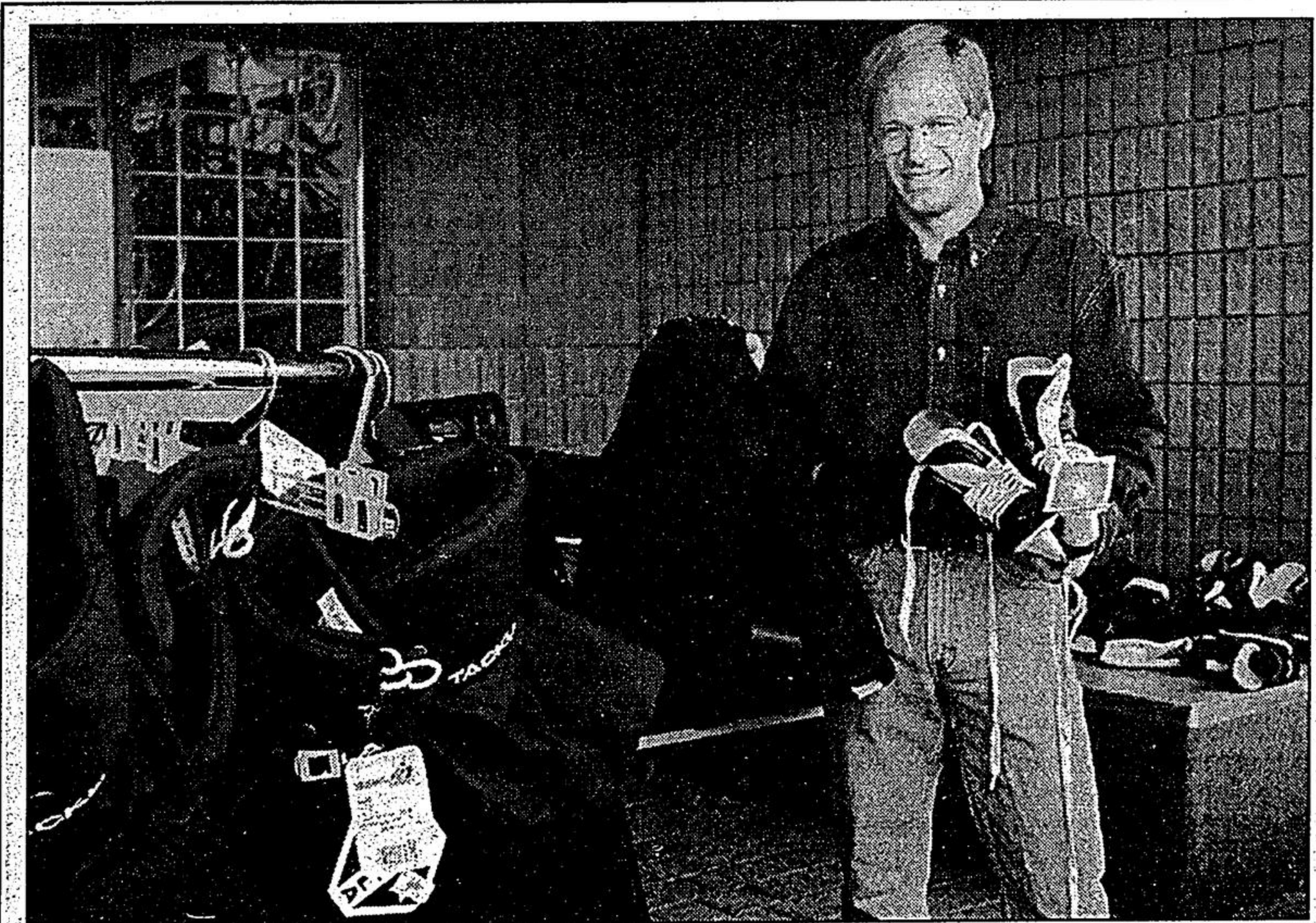
It's official: Santa Claus will visit Stouffville on Dec. 6. Whitchurch-Stouffville Council gave the nod to parade organizers to close Main Street from Palmwood Gate to the 10th Line from 1 to 3 p.m. to accommodate Santa's visit. The parade, organized by the Stouffville Kinsmen, begins at 1 p.m.

Correction

A page three headline in the Tuesday, Sept. 23 issue stated that a municipal candidate is running in Ward 2. In fact, the candidate is run-

ning in Ward 1. Also, the waste disposal facility mentioned in the story is on Woodbine Avenue.

The Tribune regrets the errors.



HEADED NORTH: Ian Boyd of Boyd's Source for Sports in Whitchurch-Stouffville holds some of the equipment bound for native children on Manitoulin Island. The skates and clothing were left over from an equipment exchange held recently.

Photo by STEVE SOMERVILLE

<p>NORM'S FURNISHINGS EST. 1979</p> <p>Kitchen, Dining & Bedroom Suites</p> <p>Fine Rustic Furnishings (905) 640-0125 (905) 640-6146 18 Ringwood Drive & Stouffville Country Market</p>	<p>5 PC. COUNTRY DINETTE You receive a 42"x42"x60" table with carved apron, and four arrow back chairs. Constructed of solid wood and oak veneer. \$599⁰⁰</p>	<p>5 PC. OAK DINETTE You get a 48"x48"x72" table with carved apron & 4 double press back side chairs. Constructed of solid wood & oak veneer. \$699⁰⁰</p>	<p>7 PC. OAK DINETTE 42"x66"x88" double pedestal table with carved apron and 6 wheat sheaf chairs constructed of solid wood and oak veneer. \$999⁰⁰</p>	<p>COMPLETE THE SET WITH THIS MATCHING BUFFET & HUTCH</p> <p>OAK BUFFET & HUTCH Featuring solid oak raised panel doors, leaded glass, felt lined drawers, this 50" wide buffet & hutch will complete your casual dining decor. Also includes 2 pot lights, antique brass handles & oak veneer. \$899⁰⁰</p>	<p>BLOW OUT</p> <p>ORTHO 1000 Both pieces</p> <p>SINGLE \$159⁰⁰ DOUBLE \$169⁰⁰ QUEEN \$199⁰⁰</p>
--	--	--	--	---	---