

SAAB
REPAIR SPECIALIST
172 HILLOCK DRIVE UNIT 31
MARKHAM
471-8660

THE TRIBUNE

Weekender


Saturday, September 20, 1997
Vol. 13, No. 38

The Best Choice is Here!

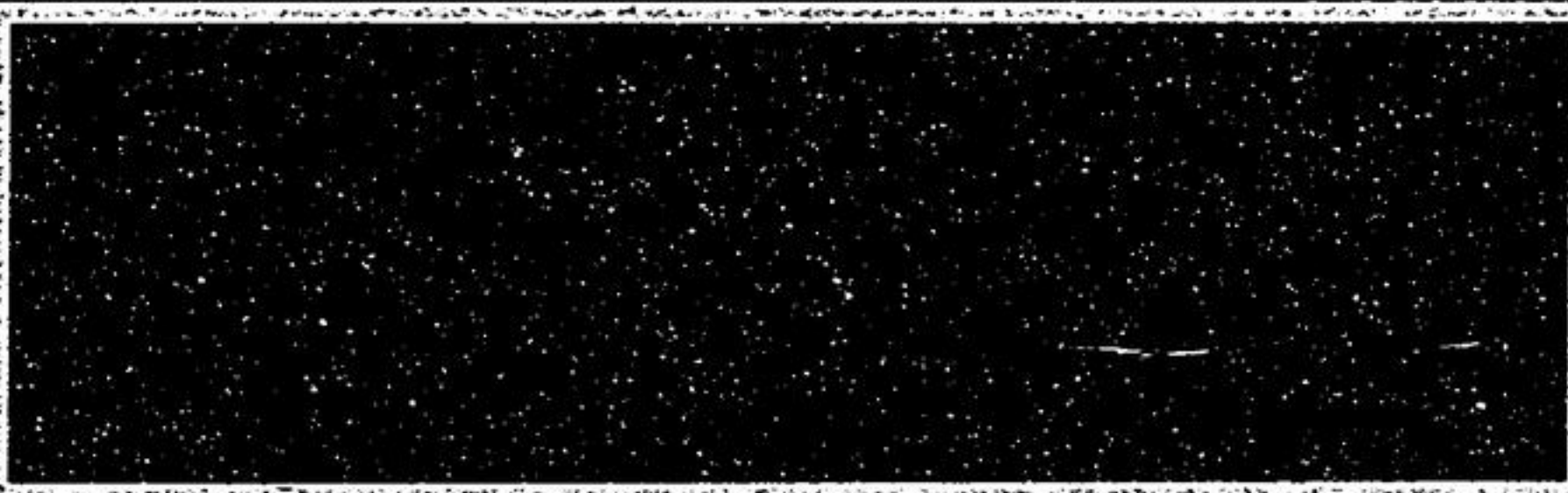
TERM	GIC
1	4.250%
2	4.575%
3	5.250%

GIC'S • RRSP'S • MUTUAL FUNDS • LIFE INSURANCE • ANNUITIES • RRIF'S • TAX PREPARATION • MORTGAGES
96 Main St. N.
Markham • 471-2311

A Metroland Publication Serving Whitchurch-Stouffville Since 1888



Stapley says
see page 7



	c	r	o	s	s	p
		w	o	r	d	13

Secondary Plan ready for approval

JOAN RANSBERRY
Staff Reporter

Whitchurch-Stouffville is within days of having a new Secondary Plan for the downtown core.

September 23 will be a landmark day for the community when at a regular Whitchurch-Stouffville council meeting, local council will receive a consultant's final

recommendations dealing with this most important of documents.

A Secondary Plan is a guideline, outlining what goes where when local government deals with planning matters.

The new plan has been two years in the making and has included a 10-member public committee working for almost a year. Mayor Wayne Emmerson is optimistic that the plan will be

signed, sealed and delivered on Tuesday.

"I expect it will be adopted," said Emmerson.

The mayor commends the people who worked on the plan.



EMMERSON

"The residents and the others have worked hard on this for a long time. Let's get on with it."

On Monday, the last public meeting dealing with the process was held at the Stouffville Missionary Church. There, members of the Whitchurch-Stouffville

Residents' Association, lead by Jean Major, outlined concerns about some of the plan.

In June, the association won a reprieve in the Secondary Plan process. The reprieve resulted in more time being given for public input.

Crash leaves one dead, three hurt

JOAN RANSBERRY
Staff Reporter

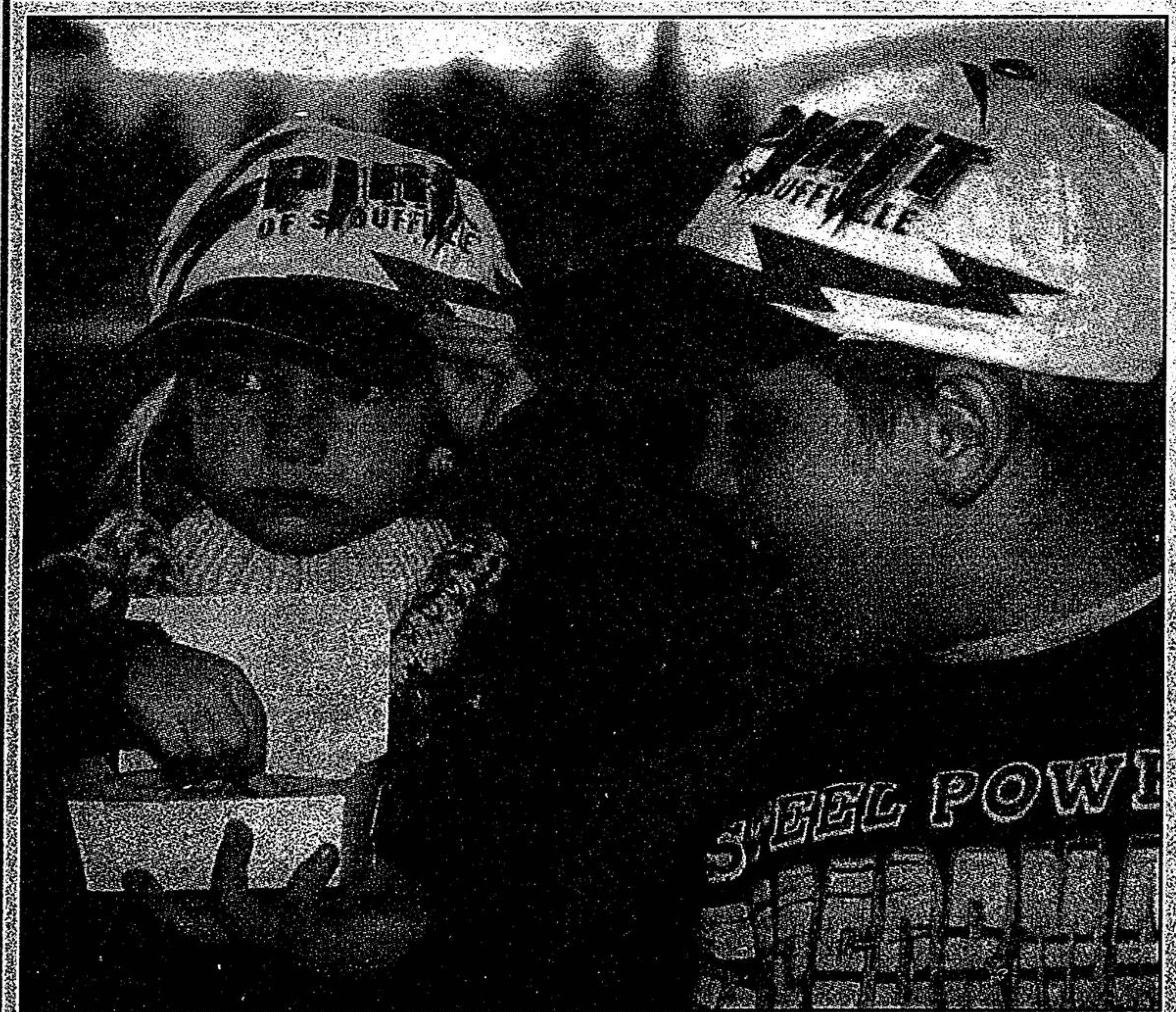
On Wednesday, a head-on collision on Highway 48 south of Vivian Sideroad claimed the life of a North York man and injured three others, the Ontario Provincial Police have reported.

Charles Samuel Nixon, 73, was pronounced dead at the scene. His wife Madelaine, 70,

and son Gary, 46, and the driver of the second vehicle were all taken to York County Hospital with non-life threatening injuries.

The accident occurred when Nixon, driving northbound on Hwy. 48 was hit by a Honda Civic driven by Yiu-Cheun Elton Kung, 35, of Scarborough.

The accident is still under investigation.



SMALL FRY: Brittany, 3, and Daroyl, 8, eat their french fries while they're still hot, before the Stouffville Spirits hockey team's home opener Thursday. See sports for more on the game.

Photo by SJOERD WITTEVEN

Food bank needs meals for children

With school underway, the Whitchurch-Stouffville Food Bank is looking for food that appeals to children.

On a weekly basis until Thanksgiving, the food bank will request specific food items to fill its nearly bare shelves.

The first week, the community responded overwhelmingly to the request for pasta and spaghetti sauce.

And last week's request for donations of canned vegetables and pork and beans was also met with enthusiasm.

This week, the food bank is asking for packages of Jello and pudding and canned fruit; food that would appeal to younger children.

Donations can be made at the local A&P, IGA, Weston Foods, the Care and Share Shop and *The Tribune* office.

Anyone wishing to volunteer with the fall food drive can call 640-1321.

McARTHUR FORD YOUR "LOW MILEAGE HEADQUARTERS"

THE AREA'S BEST SELECTION OF FINE PRE-OWNED CARS AND TRUCKS OVER 30 PRIME LOW MILEAGE PRE-OWNED VEHICLES AVAILABLE AT UNBEATABLE PRICES

<p>SALE \$18,595*</p> <p>97 F150 XLS REG CAB AUTO AIR 200HP V6 CHROME 6/40 5S10 BENCH WHITE WITH SILVER ACCENT ONLY 21,000KM #P116</p>	<p>SALE \$18,595*</p> <p>97 TAURUS GL4 DOOR V6 AIR POWER GROUP TILT CRUISE CASSETTE ANTI-LOCK BRAKES AND MORE RED WITH ONLY 21,000KM #P119</p>	<p>SALE \$19,595*</p> <p>97 SABLE GS WAGON V6 AIR AUTO POWER GROUP TILT CRUISE CASSETTE ANTI-LOCK BRAKES WAGON GROUP AND MORE RED WITH ONLY 21,000KM #P119</p>	<p>SALE \$19,995*</p> <p>96 VILLAGER GS FULLY EQUIPPED GS WITH REAR HEAT AIR CAST WHEELS POWER GROUP ANTI-LOCK BRAKES POWER SEAT AND MUCH MORE GREEN WITH ONLY 22,000KM #P1121A</p>
<p>SALE \$13,995*</p> <p>95 TAURUS GL WAGON V6 AUTO AIR CASSETTE LIGHT GROUP P/S PA/PM CRUISE CONTROL SILVER WITH ONLY 27,000KM #P13</p>	<p>SALE \$16,995*</p> <p>95 PROBE GT COUPE 2.5L 170HP V6 3 SPEED AIR CASSETTE ALLOY WHEELS SPORT BLACK WITH ONLY 29,000KM #P115</p>	<p>SALE \$17,595*</p> <p>95 WINDSTAR GL4 PASSENGER 200HP V6 AIR AUTO POWER GROUP CASSETTE TILT CRUISE AND MORE CHAMPAGNE WITH ONLY 63,000KM #P119</p>	<p>SALE \$12,595*</p> <p>95 CONTOUR GL4 DOOR 2.0L ZETEC AUTO AIR CASSETTE POWER GROUP ANTI-LOCK BRAKES TRACTION CONTROL CHAMPAGNE WITH ONLY 44,000KM #P119</p>
<p>SALE \$16,595*</p> <p>94 AEROSPHERE EXTENDED CAB V6 AUTO POWER GROUP RUNNING BOARDS CASSETTE TILT CRUISE AND MORE GREEN WITH SILVER ACCENT AND ONLY 55,000KM #P141</p>	<p>SALE \$6,995*</p> <p>95 ESCORTE LX DOOR 1.9L 3 SPEED SPORT GROUP AIR CASSETTE ALLOY WHEELS POWER AND MORE RED WITH ONLY 60,000KM #P215</p>	<p>SALE \$6,595*</p> <p>94 TEMPO GL4 DOOR AIR AUTO CASSETTE SILVER WITH ONLY 63,000KM #P132</p>	<p>SALE \$10,695*</p> <p>91 LUMINA EVAN V6 AIR AUTO POWER GROUP CASSETTE ALLOY WHEELS REAR HEATING ONE OWNER TRADE-IN FINISHED IN SILVER WITH ONLY 63,000KM #P117A</p>

FORD McARTHUR FORD Kennedy Rd. just south of Hwy. #7 (905) 474-1350

*SALE PRICES ARE PLUS ADMINISTRATION FEE (\$75), TAXES, AND LICENSE FEES.