

Sports swap to benefit native hockey teams



Ron Downey, a store supplier and Tyler Barber, shopper, help store owner Ian Boyd with some equipment donated to the Boyd Source for Sports equipment swap.

Photo by STEVE SOMERVILLE

JOAN RANSBERRY
Staff Reporter

A hockey swap, slated for September 13 at Boyd's Source for Sports in Stouffville, is expected to generate a great deal of interest.

Hockey Swap '97 includes such equipment as skates, chin-, shoulder and elbow pads and hockey pants.

For reasons linked to liability, used helmets will not be accepted. "No used helmets please," said store owner Ian Boyd.

In readiness for the swap, hockey equipment can be dropped off at the store at 5402 Main Street two days prior to the big day. Drop off days are Sept. 11 and Sept. 12, beginning at 9 a.m.

Store staff and volunteers will help equipment owners price each item. As the items are priced, they'll be placed on display tables, located under the overhang at the store.

Hockey Swap '97 gets under way at 9 a.m.

and runs until 4 p.m.

When an item sells, Boyd gives the equipment seller credit to be applied to items purchased at Boyd's. The credits can be used at anytime throughout the year.

Not only will Hockey Swap '97 give local residents a chance to buy hockey equipment at reasonable prices, it will help outfit native Canadian hockey teams.

All unclaimed equipment will be donated to the native Canadians living on Manitoulin Island.

People who simply want to get rid of hockey equipment, having no interest in swapping, are being encouraged to drop the

equipment.

"If anyone wants to clean the hockey equipment out of the basement, I'll see that all donated items get to the native Canadians," said Boyd.

"Thousands of native children play hockey. The effort to get it all to the Manitoulin Island is worth it."

Last year, hockey equipment, including team sweaters and pants donated by a hockey association in Uxbridge were sent to native Canadians in northern Quebec.

"We shipped five crates last year. It was a great response from the community and

■ Please see page 5 ■

The Tribune collecting condolences for Diana

■ From page 1 ■

name to one the many charities Princess Diana was involved in, including AIDS hospices; land mine victims; breast cancer, and the welfare of children.

They can sign a book of condolences in the Queen's Park office of Lieutenant-Governor Hilary Weston this week from 9 a.m. to 6 p.m. and until 2 p.m. Saturday.

The book is in Room 131 on the ground floor of the legislative building on Queen's Park Cr. Weston has said she will forward letters, signatures or fax messages to the royal family. The fax number is 416-325-7787.

A second book has been opened at the British Consul-General's office on the 28th floor at 777 Bay St. until Friday. Toronto City Hall has also established a condolence book as has Casey House hospice, the site of a visit by Princess Diana in 1991.

Condolence books honouring the Princess of Wales have been set up around the world.

Here in Stouffville, *The Tribune* will deliver the local book and cards to the

British Embassy. Direction will be given that the book and the cards from Stouffville residents be forwarded to Princess Diana's family.

A special church service, honoring Diana, the Princess of Wales, will be held in Stouffville on Saturday morning.

The Anglican Parish of Christ Church extends an invitation to local residents to attend the one-hour service beginning at 11 a.m.

The service will be held immediately following the funeral in England.

Anglican churches throughout the world are hosting memorial services honoring Diana—the British monarchy is the head of the Anglican Church.

Here in Stouffville, Reverent Robert Shields will officiate.

The Anglican Parish of Christ Church is located at 254 Sunset Blvd., beside the Orchard Park Public School.

Everyone is welcome.

~With files from Kathleen Griffin

Stouffville Legion dedicates garden to princess

A garden, a plaque and a new flag and pole will all honour the memory of Diana, the Princess of Wales.

Officials of the Royal Canadian Legion, Branch 459 announced yesterday that they're putting the wheels in motion to make sure the princess is long remembered here in Whitchurch-Stouffville.

In her memory, the local Legion is designating a section of land at the northeastern corner of its property on Stouffville's Ninth Line.

George Lovett, local Legion spokesman, said an area of the grounds will be set aside for the new flag pole and surrounding garden. Also, a plaque is to be designated in honour of the Princess of Wales.

The plaque will be placed within the small garden so that "members of the Legion and the population of Stouffville can pay honour to Diana for all the good she has done for the children of the world," said Lovett.

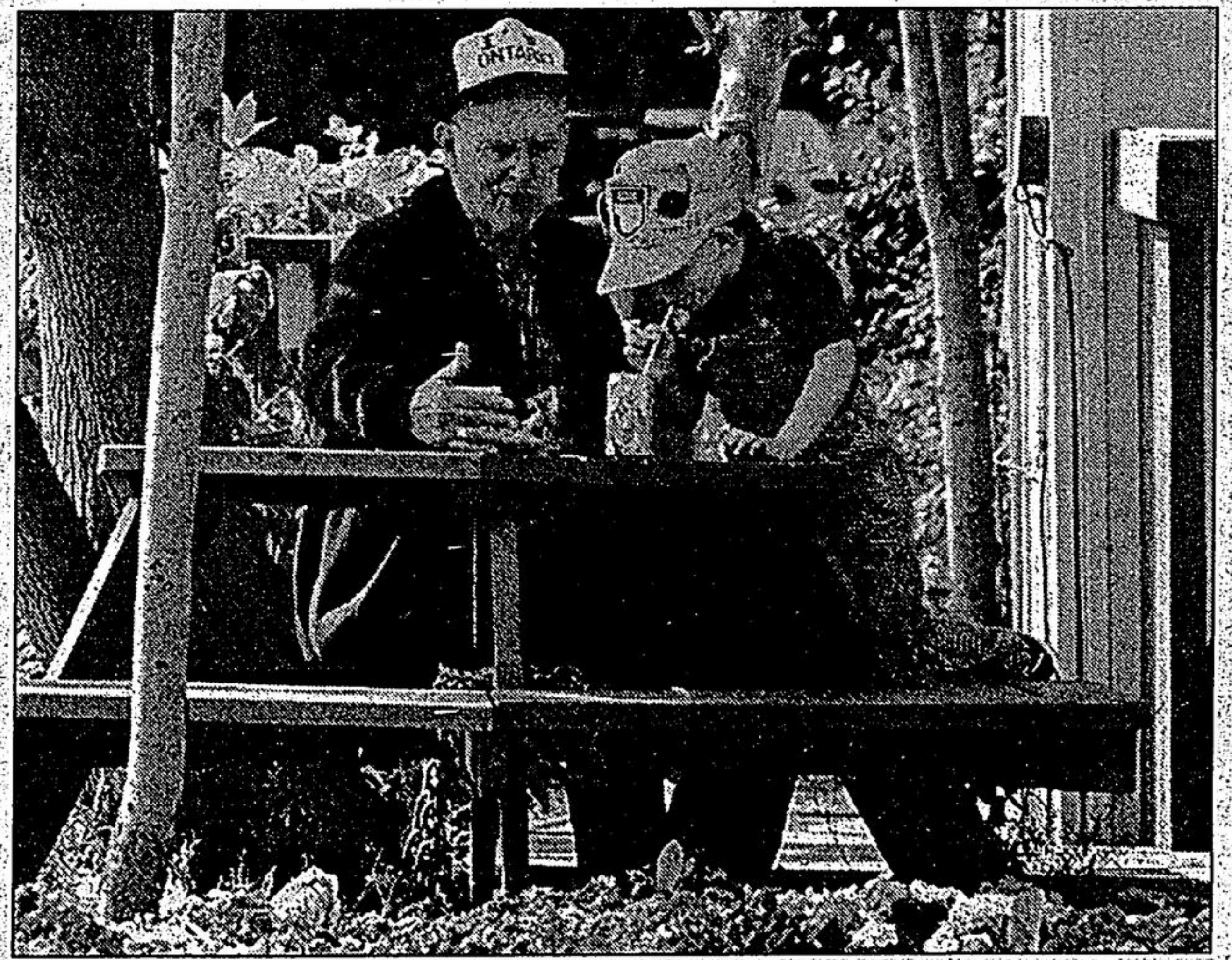
"Diana will be remembered in Stouffville."

~Joan Ransberry



CHUGGIN' DOWN THE LINE: Trainman Brad Lawance throws the switch to allow the oncoming engine to get on the right track to pick up passengers at the Stouffville train station. Grandpa George Durkee and grandson, 5-year-old Jessie Fabbro, share quality time together over a pop near the Stouffville train station while waiting for the York-Durham Heritage train to Uxbridge.

Photo by STEVE SOMERVILLE



NORM'S FURNISHINGS
EST. 1970

Kitchen, Dining & Bedroom Suites

Fine Rustic Furnishings
(905) 640-0125
(905) 640-6146
18 Ringwood Drive & Stouffville Country Market



5 PC. COUNTRY DINETTE
You receive a 42"x42"x60" table with carved apron, and four arrow back chairs. Constructed of solid wood and oak veneers. **\$599⁰⁰**



5 PC. OAK DINETTE
You get a 48"x48"x72" table with carved apron & 4 double press back side chairs. Constructed of solid wood & oak veneer. **\$699⁰⁰**



7 PC. OAK DINETTE
42"x66"x88" double pedestal table with carved apron and 6 wheat sheaf chairs constructed of solid wood and oak veneer. **\$999⁰⁰**

COMPLETE THE SET WITH THIS MATCHING BUFFET & HUTCH

OAK BUFFET & HUTCH
Featuring solid oak raised panel doors, leaded glass, felt lined drawers, this 50" wide buffet & hutch will complete your casual dining decor. Also includes 2 pot lights, antique brass handles & oak veneers. **\$899⁰⁰**



BLOW OUT

ORTHO 1000
Both pieces

SINGLE \$159⁹⁰
DOUBLE \$169⁹⁰
QUEEN \$199⁹⁰